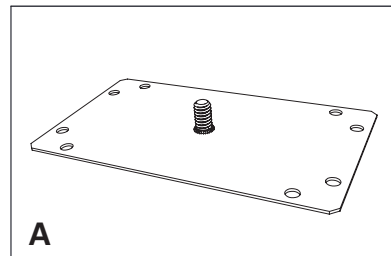


Installation Instructions - Acoustic Baffle Suspended LED

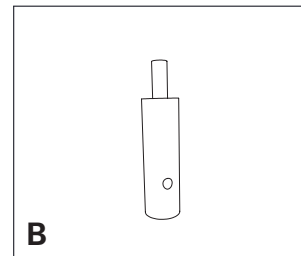
2 Inch Baffle

Recommended Equipment:

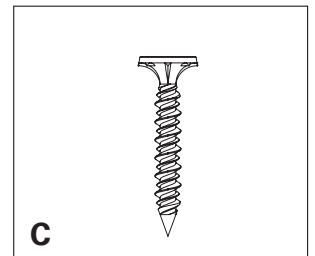
- Philips head screwdriver
- Gloves



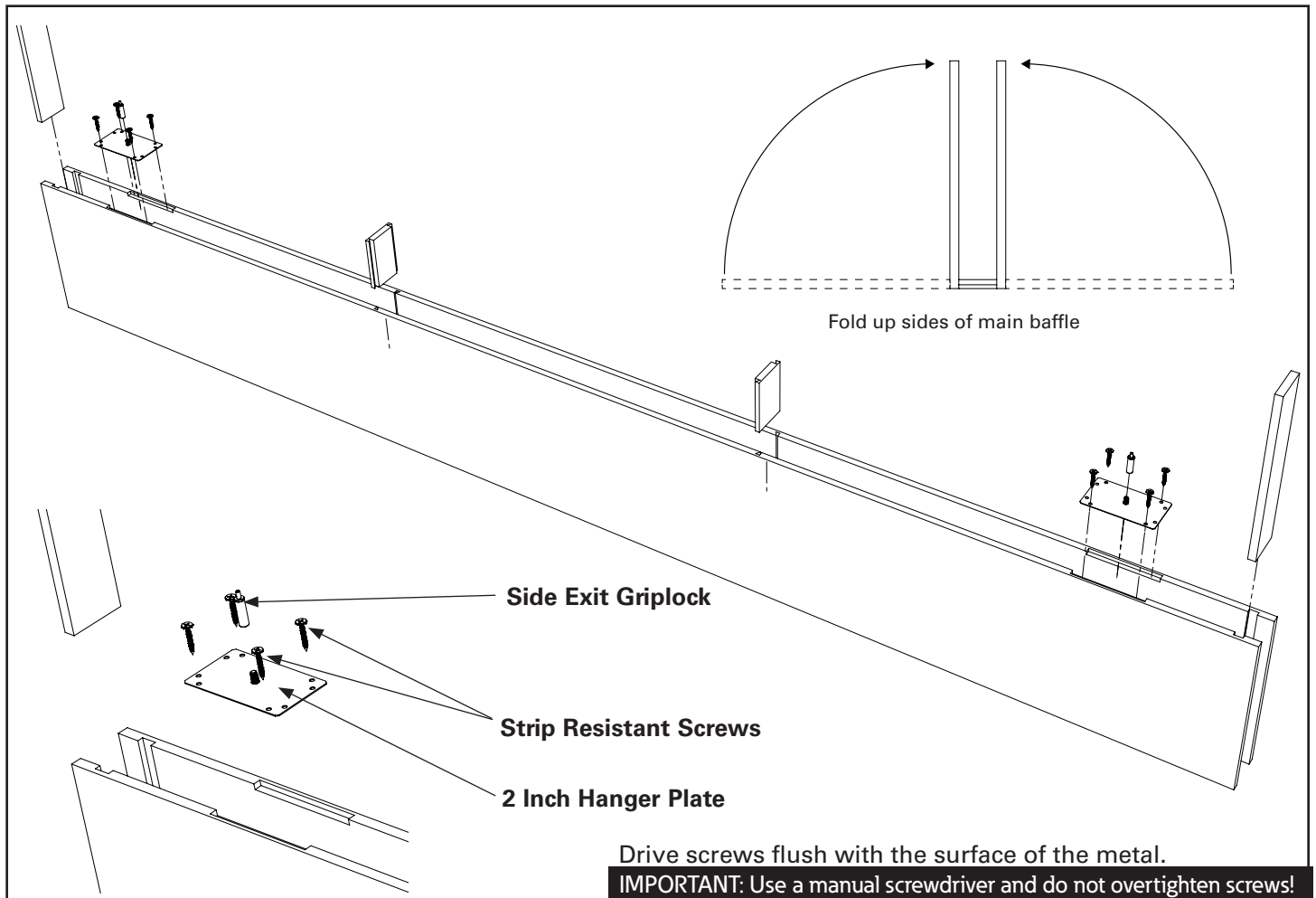
A
2 and 4 Inch Hanger Plate



B
Side Exit Griplock



C
Strip Resistant Screw

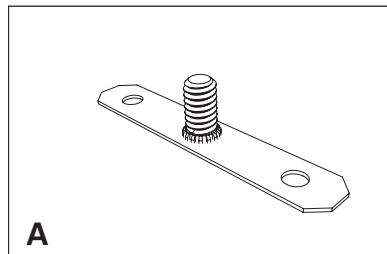


Installation Instructions - Acoustic Baffle Suspended LED

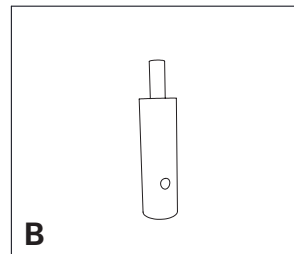
Blade Baffle

Recommended Equipment:

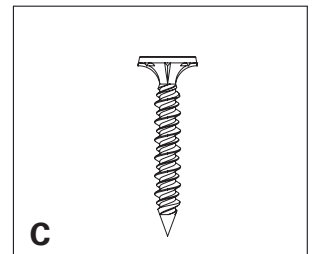
- Philips head screwdriver
- Gloves



A
Blade Hanger Plate



B
Side Exit Griplock



C
Strip Resistant Screw

