

This document is intended for installers, set-up technicians and IT professionals of Trellix products.

**Important:** Engage appropriate network security professionals to ensure all lighting control system hardware and servers are secure for access. Ensure IT professionals review the WaveLinX network architecture document found at the end of this manual.

Network security is an important issue. Typically, the IT organization must approve configurations that expose networks to the Internet. Be sure to fully read and understand customer IT Compliance documentation.

```

"access_token" "ecdf5e86-bc6e-46cf-8ed3-209632ab13af"
"token_type" "bearer"
"refresh_token" "79bdda25-ed60-4132-8406-c02b977a1bf5"
"expires_in" 6413
"scope" "openid"
"user"
"updatedBy" "118481f0-7d3a-49dd-b0b4-81371cc17a22"
"updatedAt" "2019-09-11T09:41:07.316-0400"
"createdBy" "118481f0-7d3a-49dd-b0b4-81371cc17a22"
"createdTime" "2019-09-11T09:38:59.971-0400"
"id" "d8671070-cc7a-4e81-9357-6ca32f6158fd"
"userName" "APIUser"
"roles"

"createdBy" "69add548-ec7c-49ba-aec1-0cabb5e2238c"
"createdTime" "2019-08-26T13:20:03.678-0400"
"id" "7abc1969-e00c-447a-b080-80358abbe04f"
"name" "System Administrator"
"permissions"

"updatedBy" "69add548-ec7c-49ba-aec1-0cabb5e2238c"
"updatedAt" "2019-08-26T13:20:04.490-0400"
"createdBy" "69add548-ec7c-49ba-aec1-0cabb5e2238c"
"createdTime" "2019-08-26T13:20:03.678-0400"
"id" "2b5bdc44-e8d6-4665-b73e-839fae1802d8"
"name" "User Management"
"application"

```

POST /uaa/oauth/token HTTP/1.1  
/v2/public/C1B1/areas/A1/occupancySets/OS1/identity

## **WARNING**

**Read all the instructions thoroughly before installing this product.**

This manual provided information on the installation and operation of Trellix Lighting. For proper operation it is important to follow the instructions.

The purpose of this document is to provide sufficient instructions for installation and basic troubleshooting.

*Discontinued  
06-02-2023*

# Contents

<b>1 – Introduction</b>	<b>1</b>
1.1 – Lighting System Data Structure	1
1.1.1 – Device Hierarchy	1
1.1.2 – Devices	1
1.1.3 – Endpoints	1
1.1.4 – Building Hierarchy	2
1.2 – Hypertext Transfer Protocol (HTTP)	3
1.2.1 – HTTP Messages	3
1.3 – Working with the Trellix Lighting API	3
1.3.1 – Authentication	3
1.3.2 – Response	3
1.3.3 – Common Response Properties	4
1.3.4 – Response Data Types: Detail, Display, and Identity	5
<b>2 – Trellix Lighting API Reference</b>	<b>6</b>
2.1 – Login & Authentication Requests	6
2.1.2 – Get Public Login Token	6
2.1.3 – Get Refresh Token	7
2.1.4 – Get Demand Response Login Token	10
2.1.5 – Log Out	11
2.2 – Alarms Calls	12
2.2.1 – Requests for All Alarms	12
2.2.2 – Requests for a Specific Alarm	15
2.3 – Area Calls	18
2.3.1 – Requests for All Areas	18
2.3.2 – Requests for a Specific Area	22
2.3.3 – Requests for All Endpoints in One Area	25
2.3.4 – Requests for All Devices in One Area	30
2.4 – Area Scene Calls	35
2.4.1 – Requests for a Specific Scene in One Area	35
2.4.2 – Requests for All Scenes in One Area	37
2.5 – Zone Calls	41
2.5.1 – Requests for All Zones in One Area	41
2.5.2 – Requests for a Specific Zone in One Area	45
2.5.3 – Requests for All Devices in One Zone	48
2.6 – Occupancy Set Calls	52
2.6.1 – Requests for All Occupancy Sets	53
2.6.2 – Requests for a Specific Occupancy Set	55
2.7 – Device Calls	58
2.8 – Endpoint Calls	62
2.9 – Network Calls	66
2.9.1 – Requests for All Networks	66
2.9.2 – Requests for a Specific Network	67
2.10 – Control Commands	70
2.10.1 – Acknowledge Alarms	70
2.10.2 – Send Demand Response	70
2.10.3 – Set Zone Level	71
2.10.4 – Select Scene Level	71

## 1 – Introduction

Most large real-estate management companies are developing applications that allow them to manage their real-estate assets more effectively. These companies are also offering new value-added services to their tenants, such as Web portals where tenants can find new spaces being offered or analyze how their current spaces are being used. These applications typically rely on APIs to gather data from the building systems, including HVAC, lighting, elevator, security, wastewater management and more.

With the rapid adoption of connected lighting systems, real-estate management organizations will have much more granular data at their disposal. Cooper has developed APIs to allow the management of a lighting system. A subset of these APIs is made public to empower third-party systems to access data on Cooper connected lighting systems. It is Cooper's vision to continue making more APIs public.

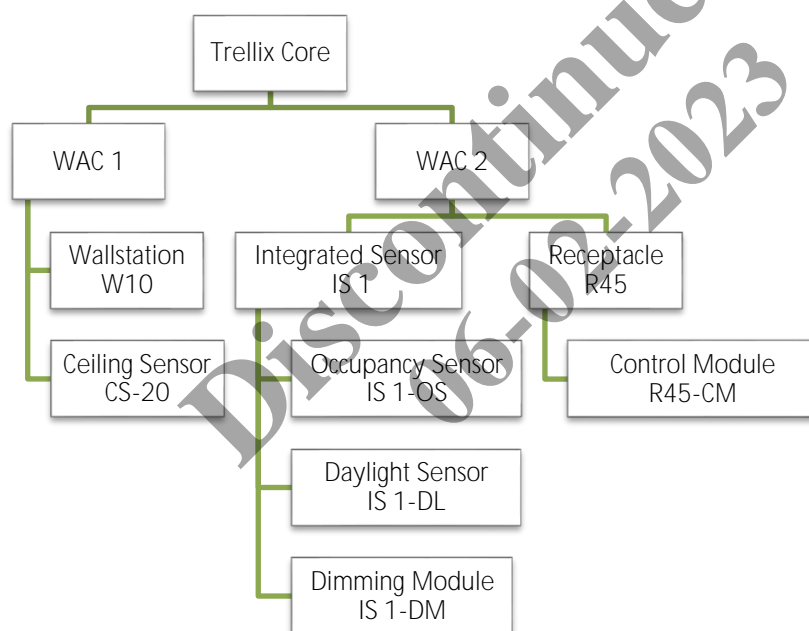
### 1.1 – Lighting System Data Structure

When a WaveLinx lighting system is configured, wireless devices are grouped into a logical device hierarchy and geographical building hierarchy. These groupings are used to control the lights according to strategies defined by the specialist who configured the system.

As a developer, you will need to understand the WaveLinx logical and geographical hierarchies to read and write lighting system data.

#### 1.1.1 – Device Hierarchy

A lighting system is composed of wireless devices connected to Wireless Area Controllers (WAC). The WACs are connected to Trellix Core that acts as a data repository and hosts interfaces such as the Published (REST) API used by third-party systems. This logical or device hierarchy is as follows: **Trellix Core > Wireless Area Controllers > Devices > Endpoints**. An example of as device hierarchy is shown below.



#### 1.1.2 – Devices

A *Device* is a physical component of a lighting system. When connected to a network, each device has a unique ID (address) on that network that is used to route network communication to the device. The object structure is flexible enough to describe current and future devices in a general way but with an appropriate level of detail.

#### 1.1.3 – Endpoints

An *Endpoint* represents a function available on a Device, including controllers, inputs and outputs. Each device can have one or more endpoints. For example, a ceiling sensor contains an occupancy sensor endpoint, while an integrated sensor contains an occupancy sensor endpoint, a daylight sensor endpoint, and a dimming module endpoint.

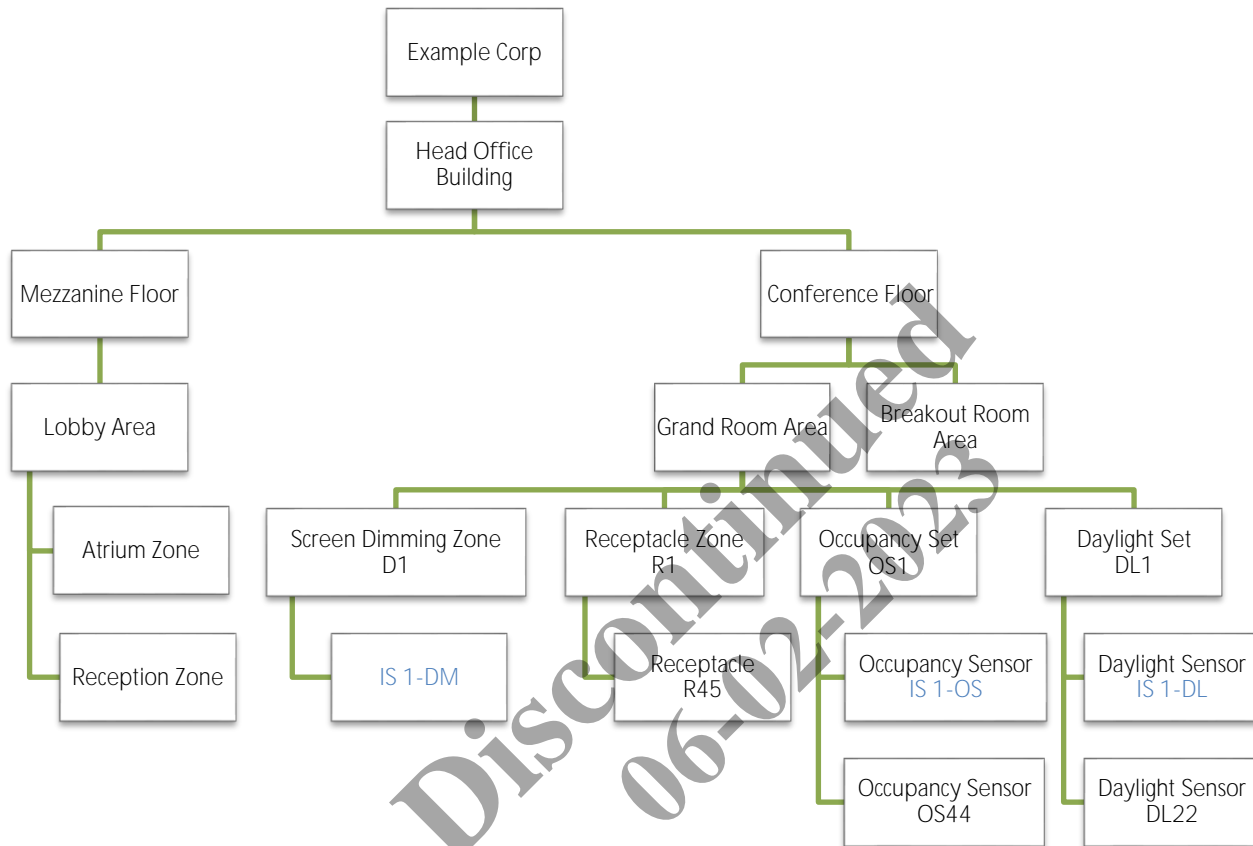
Endpoints are represented as a list in a Device object, which in turn is presented to the network. An Endpoint may represent a physical component of a Device (e.g., a daylight sensor or occupancy sensor), a logical function of a Device (e.g., firmware update capability), or a link to a controlled device. Most system interactions take place directly through Endpoints, not the Device object that contains them.

### 1.1.4 – Building Hierarchy

The geographical or building hierarchy is as follows: **Client > Building > Floor > Area > [ Zones / Occupancy Sets / Daylight Sets / Devices]**. A building hierarchy reflects a physical relationship but also certain logical relationships that group endpoints into *Occupancy Sets*, *Daylight Sets* and *Zones*.

- An **Occupancy Set** contains the sensors, controllers, and outputs that automate the lighting system based on whether a space is occupied
- A **Daylight Set** contains the sensors, controllers, and outputs that automate the lighting system according to how much daylight is present in a space

An example of a building hierarchy is shown below.



Integrated Sensor IS 1 installed in a light fixture and has an occupancy sensor endpoint, a daylight sensor endpoint, and a dimming module endpoint. The blue labels in the diagram highlights how the IS 1 dimming module appears in Screen Dimming Zone D1 while its occupancy set endpoint appears in Occupancy Set OS1, and its daylight sensor appears in Daylight Set DL1.

## Components of a Building Hierarchy

The components of a building hierarchy are as follows:

- A **Client** is a collection of Buildings.
- A **Building** is a collection of Floors.
- A **Floor** is a collection of Areas.
- An **Area** is a collection of Zones and is typically a private space such as a personal office, washroom or open space. An Area can have multiple Occupancy Sets and Daylight Sets associated with it, but each Occupancy Set or Daylight Set can only be associated with one Area.
- A **Zone** is a group of dimming endpoints that are used to control the light level or receptacles. These dimming module endpoints can be found in a wireless integrated sensor, a wireless switchpack, and a wireless receptacle.
- An **Occupancy Set** is a group of occupancy sensor endpoints that are used to turn the lights on and off based on occupancy state. These occupancy endpoints can be found in an integrated sensor or a ceiling sensor. Occupancy Sets must be associated with a single Area.
- A **Daylight Set** is a groups of daylight sensor endpoints that are used to dim the light according to amount of daylight sensed. These daylight endpoints can be found in an integrated sensor, a ceiling photocell or a ceiling sensor. Daylight Sets must be associated with a single Area.

## 1.2 – Hypertext Transfer Protocol (HTTP)

The Trellix Lighting API provides a secure programming interface to Trellix. It is a REST API, meaning it is accessed using the communication standards of the Web:

- The HTTP (Hypertext Transfer Protocol) protocol, specifically GET and POST commands
- A defined set of URLs

Each URL represents a specific type of resource, such as a device or an occupancy set.

### 1.2.1 – HTTP Messages

An HTTP message consist of a request or response line, which appears first, and header fields in the lines that follow. Here is an example of the GET request:

```
GET /v2/public/<BUILDING-ID>/areas/detail HTTP/1.1
```

The Trellix Lighting API uses both GET and POST requests.

Each header field appears on a new line as a clear-text name-value pair, separated by colons. The line is terminated by a carriage return (CR) and line feed (LF) character sequence. For example:

```
Host: 192.168.2.100
Authorization: bearer 54ea09cb-dbea-45ad-836b-8b1436bcebdc
Content-Type: application/json
Cache-Control: no-cache
```

To learn more, refer to this [List of HTTP header Fields](#).

## 1.3 – Working with the Trellix Lighting API

### 1.3.1 – Authentication

Before you can access lighting system data, you must authenticate your account. This will generate an API token you can use for further requests, like getting the status of a zone or the details of an occupancy set.

#### API Token

An API token is a string of text that acts as a unique, single-session identifier of an application requesting access to the Trellix Lighting API. For example, `54ea09cb-dbea-45ad-836b-8b1436bcebdc`.

To authenticate, you send an HTTP POST with the username `Public` (not case-sensitive) and a password provided by Cooper Lighting Solutions. For example:

```
https://192.168.1.99/uaa/oauth/token?grant_type=password&username=Public&password=myCooperPassword
```

The Trellix Lighting API will provide an access token you can use for subsequent requests.

### 1.3.2 – Response

The response to a Trellix Lighting API call will include an HTTP status code and a body. A successful call will return a status of 200, and the body will contain the requested Trellix data in JSON (JavaScript Object Notation) format. JSON is a simple and popular way to represent plain and structured data – such as booleans, arrays and objects – in plain text. For a brief introduction to JSON, see the [JSON.org](#) Web site. For the detailed specification, see the [JSON Schema](#).

### 1.3.3 – Common Response Properties

All Trellix Lighting API responses contain a single object. When a list is requested, such as the All Areas Detail List or All Endpoints Identity List, the properties described below will typically be included.

Property	Type	Description
<b>content</b>	Array	An array containing one or more objects of the requested data (e.g., Area).
<b>last</b>	Boolean	A true/false value indicating if the response is the last page of results.
<b>totalPages</b>	Number	An integer value indicating the total number pages of the requested data that are available.
<b>numberOfElements</b>	Number	An integer value indicating the number of objects in the content array.
<b>first</b>	Boolean	A true/false value indicating if the response is the first page of results.
<b>number</b>	Number	An integer value indicating which page number this response represents.
<b>sort</b>	Array	0 - Contains a single object containing properties related to how the list is sorted.

#### Example

The JSON below shows a response to an All Areas Identity List call. In this case, the content array contains the identity information for two areas, A1 and A2.

```
{
  "content": [
    {
      "publicId": "A1",
      "type": "52474f38-38aa-4ee8-8893-5541c0f5d04e",
      "name": "Default"
    },
    {
      "publicId": "A2",
      "type": "52474f38-38aa-4ee8-8893-5541c0f5d04e",
      "name": "Area 51"
    }
  ],
  "last": true,
  "totalPages": 1,
  "totalElements": 2,
  "numberOfElements": 2,
  "first": true,
  "size": 100,
  "number": 0
}
```

Discontinued  
06-02-2023

### 1.3.4 – Response Data Types: Detail, Display, and Identity

The three common sets of data that appear in most Trellix Lighting API responses are explained below.

**Detail**

*Returns the all available properties exposed by the requested object.*

**Display**

*Returns the commonly used properties exposed by the requested object.*

**Identity**

*Returns unique identification properties exposed the requested object.*

**Discontinued**  
**06-02-2023**



## 2 – Trellix Lighting API Reference

### 2.1 – Login & Authentication Requests

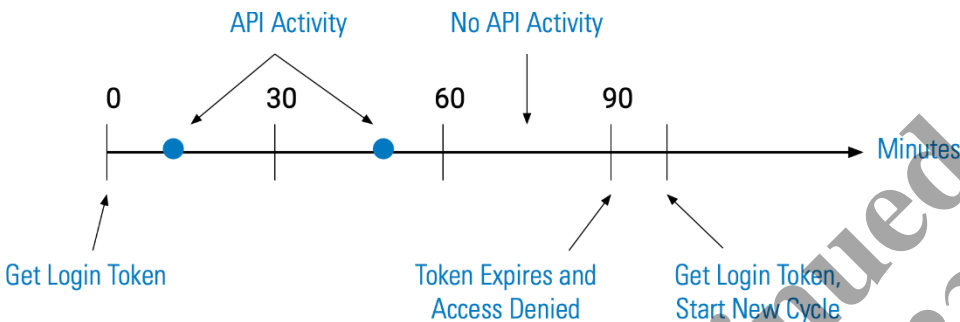
The API calls below are used to start a Trellix Lighting API session by generating the token you require to use any of the other API requests.

#### 2.1.1 – Login Duration

When a successful Get Public Login Token call is made, access will be granted using that token for a minimum of 30 minutes. Trellix monitors for API activity in 30-minute windows after granting access. As long as one or more API calls are made within each window, Trellix will maintain access with the original token for up to two hours maximum (four 30-minute periods).

If there is no API activity in a 30-minute window, or when the two hours maximum has been reached, the token is revoked and access denied until a new Get Public Login Token call is made.

The diagram below shows an authentication cycle where a Login Token is granted and followed by API activity in two successive 30 minutes period. When no activity occurs between 60 and 90 minutes, the token expires, and a new Get Login Token request must be made.



To avoid being denied access, the Get Refresh Token call can be used before the current token expires. This will extend the cycle and maintain access for up to another two hours.

We recommend issuing a Get Refresh Token call just before the each 30-minute window. This will provide continuous access to Trellix, and future-proof your application should the maximum time be reduced from the current two hours.

#### 2.1.2 – Get Public Login Token

This POST request returns an access token and its type.

##### HTTP Header Fields

```
POST /uaa/oauth/token HTTP/1.1
Authorization: Basic ZWF0b24tY2xpZW50OkFDdHZRQzFoSE4=
Content-Type: application/x-www-form-urlencoded
Cache-Control: no-cache
```

```
grant_type=password&username=Public&password=<COOPER-PASSWORD>
```

##### POST Request Structure

```
https://<HOST-IP>:<HOST-PORT>/uaa/oauth/token?grant_type=password&username=Public&password=<COOPER-PASSWORD>
```

Where:

- **<HOST-IP>** – IP address of the Trellix Lighting API server. Default is 192.168.2.100
- **<HOST-PORT>** – IP port on the Trellix Lighting API server, optional and defaults to 443 for secure (https) connections
- **<COOPER-PASSWORD>** – Trellix Lighting API password provided by Cooper Lighting Solutions

##### Request Example

```
https://192.168.2.100/uaa/oauth/token?grant_type=password&username=Public&password=myCooprPassword
```

## JSON Body Example

```
{
  "access_token": "54ea09cb-dbea-45ad-836b-8b1436bcebdc",
  "token_type": "bearer",
  "refresh_token": "b67c9076-2565-4f18-a657-982e15d2725a",
  "expires_in": 4746,
  "scope": "openid",
  "user": {
    "id": "b57acccd-8cb0-40d9-8f76-1f330da0374c",
    "userName": "Public",
    "role": {
      "id": "56be369b-7acc-4d68-a815-39d58d026b55",
      "name": "Third Party Integration",
      "permissions": [
        {
          "id": "962f14db-2f9c-4625-82ee-93ebf99e0273",
          "name": "Interface Settings"
        }
      ]
    },
    "updatedAt": "2018-05-11T15:12:10.280Z",
    "updatedBy": "69add548-ec7c-49ba-aec1-0cabb5e2238c"
  },
  "authInfo": {
    "id": "2d808ff3-4dc7-4087-902d-63ec5a0c8da4",
    "passwordExpires": false,
    "policy": {
      "id": "ef89498b-cea8-43f8-a87d-443819adbe06",
      "name": "Default Policy",
      "expiryDuration": 7776000000,
      "reuseLimit": 10,
      "maximumLength": 16,
      "minimumLength": 8,
      "minimumNumber": 1,
      "minimumSpecial": 1,
      "minimumUpper": 1
    },
    "isLocked": false,
    "daysToExpiry": -1,
    "isExpired": false
  },
  "updatedAt": "2018-05-11T15:12:10.280Z",
  "updatedBy": "69add548-ec7c-49ba-aec1-0cabb5e2238c",
  "createdTime": "2018-05-11T15:12:10.280Z",
  "createdBy": "69add548-ec7c-49ba-aec1-0cabb5e2238c",
  "isLdap": false,
  "isDefault": true,
  "isClosed": false
}
```

Using `ro` as the Get Public Login JSON response object in the example above, the relevant values are described below.

Property	Value	Description
<code>ro.access_token</code>	54ea09cb-dbea-45ad-836b-8b1436bcebdc	Authentication token you must provide in subsequent API calls.
<code>ro.refresh_token</code>	b67c9076-2565-4f18-a657-982e15d2725a	Authentication refresh token.
<code>ro.expires_in</code>	4746	Number of seconds before <code>respBody.access_token</code> expires.

### 2.1.3 – Get Refresh Token

This POST request, which only works during an active login session, returns an updated access token to extend the login period by 30 minutes.

#### HTTP Header Fields

```
POST /uaa/oauth/token HTTP/1.1
Authorization: Basic ZWF0b24tY2xpZW50OkFDDhZRQzFoSE4=
```

```
Content-Type: application/x-www-form-urlencoded
Cache-Control: no-cache
```

### POST Request Structure

```
https://<HOST-IP>:<HOST-PORT>/uaa/oauth/token
```

Where:

- <HOST-IP> – IP address of the Trellix Lighting API server, defaults to 192.168.2.100
- <HOST-PORT> – IP port on the Trellix Lighting API server, optional and defaults to 443 for secure (https) connections

### Request Example

```
https://192.168.2.100/uaa/oauth
```

### JSON Body Example

```
{
  "access_token": "d6c621c2-a138-409b-ab11-8b096c103dad",
  "token_type": "bearer",
  "refresh_token": "d1256b8b-39ef-4cb0-bfc9-0691c8954471",
  "expires_in": 7199,
  "scope": "openid",
  "user": {
    "updatedBy": "69add548-ec7c-49ba-aec1-0cabb5e2238c",
    "updatedAt": "2019-12-06T11:04:53.737-0500",
    "createdBy": "69add548-ec7c-49ba-aec1-0cabb5e2238c",
    "createdAt": "2019-12-06T11:03:44.484-0500",
    "id": "a81b3226-868e-469e-8c43-b4aa50f456ad",
    "userName": "LightingAPI",
    "roles": [
      {
        "createdBy": "69add548-ec7c-49ba-aec1-0cabb5e2238c",
        "createdAt": "2019-11-28T09:40:44.676-0500",
        "id": "56be369b-7acc-4d68-a815-39d58d026b55",
        "name": "Third Party Integration",
        "permissions": [
          {
            "updatedBy": "69add548-ec7c-49ba-aec1-0cabb5e2238c",
            "updatedAt": "2019-11-28T09:40:45.488-0500",
            "createdBy": "69add548-ec7c-49ba-aec1-0cabb5e2238c",
            "createdAt": "2019-11-28T09:40:44.676-0500",
            "id": "977c979b-c42c-409d-8ede-6ecd3415e8ed",
            "name": "View Only",
            "application": {
              "id": "46779fe5-204f-44bf-984b-157dd148f5c8",
              "shortName": "LXI",
              "active": true,
              "isActive": true,
              "isEnabled": true
            },
            "identifier": "LXI_View_Only"
          },
          {
            "updatedBy": "69add548-ec7c-49ba-aec1-0cabb5e2238c",
            "updatedAt": "2019-11-28T09:40:45.488-0500",
            "createdBy": "69add548-ec7c-49ba-aec1-0cabb5e2238c",
            "createdAt": "2019-11-28T09:40:44.676-0500",
            "id": "4bf22b74-e1e5-49d4-a746-90b5200c5421",
            "name": "Manual Action",
            "application": {
              "id": "46779fe5-204f-44bf-984b-157dd148f5c8",
              "shortName": "LXI",
              "active": true,
              "isActive": true,
              "isEnabled": true
            },
            "identifier": "LXI_Manual_Action"
          }
        ]
      }
    ]
  },
  "updatedBy": "69add548-ec7c-49ba-aec1-0cabb5e2238c",
```

```

      "updatedAt": "2019-11-28T09:40:45.488-0500",
      "createdBy": "69add548-ec7c-49ba-aec1-0cabb5e2238c",
      "createdTime": "2019-11-28T09:40:45.488-0500",
      "id": "639e7237-7fb9-4678-aca3-9c7c95dfda0d",
      "name": "View Only",
      "application": {
        "id": "4b237de7-a393-4a48-97d1-f697f50bcd0c",
        "shortName": "BXI",
        "active": true,
        "isActive": true,
        "isEnabled": true
      },
      "identifier": "BXI_View_Only"
    },
    {
      "updatedBy": "69add548-ec7c-49ba-aec1-0cabb5e2238c",
      "updatedAt": "2019-11-28T09:40:45.488-0500",
      "createdBy": "69add548-ec7c-49ba-aec1-0cabb5e2238c",
      "createdTime": "2019-11-28T09:40:45.488-0500",
      "id": "780434c7-7ce0-4a59-9252-261611959db6",
      "name": "Lighting API",
      "application": {
        "id": "4b237de7-a393-4a48-97d1-f697f50bcd0c",
        "shortName": "BXI",
        "active": true,
        "isActive": true,
        "isEnabled": true
      },
      "identifier": "LXI_API_Access"
    }
  ],
  "application": {
    "id": "46779fe5-204f-44bf-984b-157dd148f5c8",
    "shortName": "LXI",
    "active": true,
    "isActive": true,
    "isEnabled": true
  },
  "isDefault": true
},
],
"authInfo": {
  "updatedBy": "69add548-ec7c-49ba-aec1-0cabb5e2238c",
  "updatedAt": "2019-12-06T11:03:44.483-0500",
  "createdBy": "69add548-ec7c-49ba-aec1-0cabb5e2238c",
  "createdTime": "2019-12-06T11:03:44.484-0500",
  "id": "c4462bd4-8ec7-4d1d-a76b-755b3c00c983",
  "passwordExpires": false,
  "policy": {
    "updatedBy": "69add548-ec7c-49ba-aec1-0cabb5e2238c",
    "updatedAt": "2019-11-28T09:40:44.676-0500",
    "createdBy": "69add548-ec7c-49ba-aec1-0cabb5e2238c",
    "createdTime": "2019-11-28T09:40:44.676-0500",
    "id": "ef89498b-cea8-43f8-a87d-443819adbe06",
    "expiryDuration": 7776000000,
    "reuseLimit": 10,
    "maximumLength": 16,
    "minimumLength": 8,
    "minimumNumber": 1,
    "minimumSpecial": 1,
    "minimumUpper": 1
  },
  "isLocked": false,
  "daysToExpiry": -1,
  "isExpired": false
},
"areaOfResponsibilityType": "PARTIAL",
"departmentOfResponsibilityType": "PARTIAL",
"departments": [
  {

```

```

        "id": "09455979-25b6-4260-b0ec-12a2df2b1a37",
        "name": "Default"
    },
    {
        "id": "ee38e32d-b3d1-4c85-86e8-04dde3e510cd",
        "name": "Default"
    },
    {
        "id": "c054738c-63dc-431d-8a0c-0614cf325d2c",
        "name": "Default"
    }
],
"isLdap": false,
"isDefault": false,
"isClosed": false,
"isRegPortalNotify": true
}
}

```

Using `ro` as the Get Refresh Token JSON response object in the example above, the relevant values are described below.

Property	Value	Description
<code>ro.access_token</code>	54ea09cb-dbea-45ad-836b-8b1436bcebdc	Authentication token you must provide in subsequent API calls
<code>ro.refresh_token</code>	b67c9076-2565-4f18-a657-982e15d2725a	Authentication refresh token
<code>ro.expires_in</code>	4746	Number of seconds before <code>respBody.access_token</code> expires

### 2.1.4 – Get Demand Response Login Token

The POST request returns a Demand Response token.

#### HTTP Header Fields

```

POST /uaa/oauth/token HTTP/1.1
Authorization: Basic ZWF0b24tY2xpZW50OkFDDHZRQzFoSE4=
Content-Type: application/x-www-form-urlencoded
Cache-Control: no-cache

```

#### POST Request Structure

```

https://<HOST-IP>:<HOST-PORT>/uaa/oauth/token?grant_type=password&username=Public&password=<COOPER-PASSWORD>

```

Where:

- `<HOST-IP>` – IP address of the Trellix Lighting API server, optional and defaults to `192.168.2.100`
- `<HOST-PORT>` – IP port on the Trellix Lighting API server, optional and defaults to `443` for secure (https) connections
- `<COOPER-PASSWORD>` – Trellix Lighting API password provided by Cooper Lighting Solutions

#### Request Example

```

https://192.168.2.100/uaa/oauth/token?grant_type=password&username=Public&password=myCooperPassword

```

#### JSON Body Example

```

{
  "access_token": "54ea09cb-dbea-45ad-836b-8b1436bcebdc",
  "token_type": "bearer",
  "refresh_token": "b67c9076-2565-4f18-a657-982e15d2725a",
  "expires_in": 4746,
  "scope": "openid",
  "user": {
    "id": "b57acccd-8cb0-40d9-8f76-1f330da0374c",
    "userName": "Public",
    "role": {
      "id": "56be369b-7acc-4d68-a815-39d58d026b55",
      "name": "Third Party Integration",

```

```

    "permissions": [
      {
        "id": "962f14db-2f9c-4625-82ee-93ebf99e0273",
        "name": "Interface Settings"
      }
    ],
    "updatedAt": "2018-05-11T15:12:10.280Z",
    "updatedBy": "69add548-ec7c-49ba-aec1-0cabb5e2238c"
  },
  "authInfo": {
    "id": "2d808ff3-4dc7-4087-902d-63ec5a0c8da4",
    "passwordExpires": false,
    "policy": {
      "id": "ef89498b-cea8-43f8-a87d-443819adbe06",
      "name": "Default Policy",
      "expiryDuration": 7776000000,
      "reuseLimit": 10,
      "maxLength": 16,
      "minLength": 8,
      "minNumber": 1,
      "minSpecial": 1,
      "minUpper": 1
    },
    "isLocked": false,
    "daysToExpiry": -1,
    "isExpired": false
  },
  "updatedAt": "2018-05-11T15:12:10.280Z",
  "updatedBy": "69add548-ec7c-49ba-aec1-0cabb5e2238c",
  "createdTime": "2018-05-11T15:12:10.280Z",
  "createdBy": "69add548-ec7c-49ba-aec1-0cabb5e2238c",
  "isLdap": false,
  "isDefault": true,
  "isClosed": false
}
}

```

Using `ro` as the Get Demand Response Login JSON response object in the example above, the relevant values are described below.

Property	Value	Description
<code>ro.access_token</code>	54ea09cb-dbea-45ad-836b-8b1436bcebdc	Authentication token you must provide in subsequent API calls.
<code>ro.refresh_token</code>	b67c9076-2565-4f18-a657-982e15d2725a	Authentication refresh token.
<code>ro.expires_in</code>	4746	Number of seconds before <code>respBody.access_token</code> expires.

## 2.1.5 – Log Out

This POST request logs out an authenticated user.

### HTTP Header Fields

```

POST /uaa/logout HTTP/1.1
Authorization: Basic ZWF0b24tY2xpZW50OkFDDhZRQzFoSE4=
Content-Type: multipart/form-data;
Cache-Control: no-cache

```

### POST Request Structure

```
https://<HOST-IP>:<HOST-PORT>/uaa/logout
```

Where:

- `<HOST-IP>` – IP address of the Trellix Lighting API server, and defaults to `192.168.2.100`
- `<HOST-PORT>` – IP port on the Trellix Lighting API server, optional and defaults to `443` for secure (https) connections

### Request Example

```
https://192.168.2.100/uaa/logout
```

## JSON Body Example

No JSON data is returned for this call.

## 2.2 – Alarms Calls

### 2.2.1 – Requests for All Alarms

This section describes API calls that provide various ways to view a list of all alarms on the network.

#### All Alarms Detail List

Returns a detail list of all alarms.

#### HTTP Header Fields

```
GET /v2/public/alarms/detail HTTP/1.1
Authorization: <TOKEN-TYPE> <ACCESS-TOKEN>
Content-Type: application/json
Cache-Control: no-cache
```

#### GET Request Structure

```
https://<HOST-IP>:<HOST-PORT>/v2/public/alarms/detail
```

Where:

- <HOST-IP> – IP address of the Trellix Lighting API server, and defaults to 192.168.2.100
- <HOST-PORT> – IP port on the Trellix Lighting API server, optional and defaults to 443 for secure (https) connections
- <TOKEN-TYPE> – Type of authentication token (always `bearer`)
- <ACCESS-TOKEN> – Trellix Lighting API token returned in a Get Public Login Token request

#### GET Request Example

```
https://192.168.2.100/v2/public/alarms/detail
```

#### JSON Body Example

```
[
  {
    "updatedAt": "2019-11-29T14:40:58.989-0500",
    "createdTime": "2019-11-29T14:40:58.989-0500",
    "id": "88e77d49-1a99-4dd3-b36b-f3860cb26a68",
    "description": "Endpoint location not configured!",
    "source": "ENDPOINT",
    "sourceId": "9a4e76dc-f263-11e9-99ec-001d054d2784",
    "occurrenceTime": "2019-11-29T14:40:58.971-0500",
    "status": "ACTIVE",
    "errorCode": "RTLS.DATA.E.2101"
  },
  {
    "updatedAt": "2019-11-29T14:34:50.996-0500",
    "createdTime": "2019-11-29T14:34:50.996-0500",
    "id": "456ec044-6e05-4400-9bd3-b1f18a34f524",
    "description": "Tag 264740 exited from Test1!",
    "source": "ASSET",
    "sourceId": "f8bec5b6-0981-452e-97af-f6720f746e00",
    "sourcePublicId": "Battery_9",
    "occurrenceTime": "2019-11-29T14:34:50.987-0500",
    "status": "ACTIVE",
    "errorCode": "RTLS.RULE.I.2001"
  },
  {
    "updatedAt": "2019-11-29T14:03:00.885-0500",
    "createdTime": "2019-11-29T14:03:00.884-0500",
    "id": "727488aa-74c5-49e3-916d-8c28b5948ba0",
    "description": "Tag A10E9D entered in test!",
    "source": "ASSET",
    "sourceId": "37af6dc7-b6bb-4344-8785-a9db32e2b295",
    "sourcePublicId": "Button_8",
    "occurrenceTime": "2019-11-29T14:03:00.660-0500",
    "status": "ACTIVE",
    "errorCode": "RTLS.RULE.I.2001"
  }
]
```

```
}
]
```

Using `ro` as the All Alarms Detail response object in the example above, the relevant values are described below

Property	Value	Description
<code>ro.updatedTime</code>	2019-11-29T14:40:58.989-0500	The date and time when this Alarm was last updated (date).
<code>ro.createdTime</code>	2019-11-29T14:40:58.989-0500	The date and time when this Alarm was created (date).
<code>ro.id</code>	88e77d49-1a99-4dd3-b36b-f3860cb26a68	The internal ID of this Alarm (string).
<code>ro.description</code>	Endpoint location not configured!	The Alarm description (string)
<code>ro.source</code>	ENDPOINT	The source of the Alarm (string)
<code>ro.sourceId</code>	9a4e76dc-f263-11e9-99ec-001d054d2784	The internal ID of the Alarm source (string)
<code>ro.occurrenceTime</code>	2019-11-29T14:40:58.971-0500	The time of this Alarm (date).
<code>status</code>	ACTIVE	The reported Alarm status (ACTIVE, ACKNOWLEDGED)
<code>errorCode</code>	RTLS.DATA.E.2101	Error code for internal diagnostic use.

### All Alarms Display List

Return a display list of all configured alarms.

#### HTTP Header Fields

```
GET /v2/public/alarms/display HTTP/1.1
Authorization: <TOKEN-TYPE> <ACCESS-TOKEN>
Content-Type: application/json
Cache-Control: no-cache
```

#### GET Request Structure

```
https://<HOST-IP>:<HOST-PORT>/v2/public/alarms/display
```

Discontinued  
06-02-2023



**Where:**

- **<HOST-IP>** – IP address of the Trellix Lighting API server, and defaults to 192.168.2.100
- **<HOST-PORT>** – IP port on the Trellix Lighting API server, optional and defaults to 443 for secure (https) connections
- **<TOKEN-TYPE>** – Type of authentication token (always `bearer`)
- **<ACCESS-TOKEN>** – Trellix Lighting API token returned in a Get Public Login Token request

**GET Request Example**

```
https://192.168.2.100/v2/public/alarms/display
```

**JSON Body Example**

```
[
  {
    "updatedAt": "2019-11-29T14:40:58.989-0500",
    "id": "88e77d49-1a99-4dd3-b36b-f3860cb26a68",
    "description": "Endpoint location not configured!",
    "source": "ENDPOINT",
    "sourceId": "9a4e76dc-f263-11e9-99ec-001d054d2784",
    "occurrenceTime": "2019-11-29T14:40:58.971-0500",
    "status": "ACTIVE",
    "errorCode": "RTLS.DATA.E.2101"
  },
  {
    "updatedAt": "2019-11-29T14:34:36.987-0500",
    "id": "200aa5d2-94e7-465d-acca-18f96233a03c",
    "description": "Tag 264740 exited from Test1!",
    "source": "ASSET",
    "sourceId": "f8bec5b6-0981-452e-97af-f6720f746e00",
    "sourcePublicId": "Battery_9",
    "occurrenceTime": "2019-11-29T14:34:36.981-0500",
    "status": "ACTIVE",
    "errorCode": "RTLS.RULE.I.2001"
  },
  {
    "updatedAt": "2019-11-29T14:03:00.885-0500",
    "id": "727488aa-74c5-49e3-916d-8c28b5948ba0",
    "description": "Tag A10E9D entered in test!",
    "source": "ASSET",
    "sourceId": "37af6dc7-b6bb-4344-8785-a9db32e2b295",
    "sourcePublicId": "Button_8",
    "occurrenceTime": "2019-11-29T14:03:00.660-0500",
    "status": "ACTIVE",
    "errorCode": "RTLS.RULE.I.2001"
  }
]
```

Using `ro` as the All Alarms Display response object in the example above, the relevant values are described below

Property	Value	Description
<code>ro.updatedTime</code>	2019-11-29T14:40:58.989-0500	The date and time when this Alarm was last updated (date).
<code>ro.id</code>	88e77d49-1a99-4dd3-b36b-f3860cb26a68	The internal ID of this Alarm (string).
<code>ro.description</code>	Endpoint location not configured!	The Alarm description (string)
<code>ro.source</code>	ENDPOINT	The source of the Alarm (string)
<code>ro.sourceId</code>	9a4e76dc-f263-11e9-99ec-001d054d2784	The internal ID of the Alarm source (string)
<code>ro.occurrencTime</code>	2019-11-29T14:40:58.971-0500	The time of this Alarm (sate).
<code>status</code>	ACTIVE	The reported Alarm status (ACTIVE, ACKNOWLEDGED)
<code>errorCode</code>	RTLS.DATA.E.2101	Error code for internal diagnostic use.

**All Alarms Identity List**

Return an identity list of all configured areas.

## HTTP Header Fields

```
GET /v2/public/alarms/identity HTTP/1.1
Authorization: <TOKEN-TYPE> <ACCESS-TOKEN>
Content-Type: application/json
Cache-Control: no-cache
```

## GET Request Structure

```
https://<HOST-IP>:<HOST-PORT>/v2/public/alarms/identity
```

### Where:

- <HOST-IP> – IP address of the Trellix Lighting API server, and defaults to 192.168.2.100
- <HOST-PORT> – IP port on the Trellix Lighting API server, optional and defaults to 443 for secure (https) connections
- <TOKEN-TYPE> – Type of authentication token (always bearer)
- <ACCESS-TOKEN> – Trellix Lighting API token returned in a Get Public Login Token request

## GET Request Example

```
https://192.168.2.100/v2/public/alarms/identity
```

## JSON Body Example

```
[
  {
    "id": "88e77d49-1a99-4dd3-b36b-f3860cb26a68",
    "description": "Endpoint location not configured!"
  },
  {
    "id": "456ec044-6e05-4400-9bd3-b1f18a34f524",
    "description": "Tag 264740 exited from Test1!"
  },
  {
    "id": "12b1b91a-e042-4f24-bbfb-19d00781cba1",
    "description": "Tag 264740 entered in Test1!"
  },
  {
    "id": "200aa5d2-94e7-465d-acca-18f96233a03c",
    "description": "Tag 264740 exited from Test1!"
  },
  {
    "id": "da62f8a0-8719-4006-8ff4-402e40f63e70",
    "description": "Tag 264740 entered in Test1!"
  },
  {
    "id": "727488aa-74c5-49e3-916d-8c28b5948ba0",
    "description": "Tag A10E9D entered in test!"
  }
]
```

Using `ro` as the All Alarms Identity response object in the example above, the relevant values are described below

Property	Value	Description
<code>ro.id</code>	88e77d49-1a99-4dd3-b36b-f3860cb26a68	The internal ID of this Alarm (string).
<code>ro.description</code>	Endpoint location not configured!	The Alarm description (string)

### 2.2.2 – Requests for a Specific Alarm

This section describes API calls that provide various views of the details of one alarm on the network.

#### Alarm Detail View

Return the detail information for a specified alarm.

#### HTTP Header Fields

```
GET /v2/public/alarms/<ALARM-ID>/detail HTTP/1.1
Authorization: <TOKEN-TYPE> <ACCESS-TOKEN>
Content-Type: application/json
Cache-Control: no-cache
```

## GET Request Structure

```
https://<HOST-IP>:<HOST-PORT>/v2/public/alarms/<ALARM-ID>/detail
```

### Where:

- <HOST-IP> – IP address of the Trellix Lighting API server, and defaults to 192.168.2.100
- <HOST-PORT> – IP port on the Trellix Lighting API server, optional and defaults to 443 for secure (https) connections
- <TOKEN-TYPE> – Type of authentication token (always bearer)
- <ACCESS-TOKEN> – Trellix Lighting API token returned in a Get Public Login Token request
- <ALARM-ID> – Case-sensitive ID of the alarm being requested

## GET Request Example

```
https://192.168.2.100/v2/public/alarms/88e77d49-1a99-4dd3-b36b-f3860cb26a68/detail
```

## JSON Body Example

```
{
  "updatedAt": "2019-12-06T11:39:42.353-0500",
  "createdAt": "2019-12-05T15:45:49.726-0500",
  "id": "1e96c895-ee75-4a58-a36e-7d29483822cf",
  "description": "Endpoint location not configured!",
  "source": "ENDPOINT",
  "sourceId": "9a4e76dc-f263-11e9-99ec-001d054d2784",
  "occurrenceTime": "2019-12-05T15:45:49.658-0500",
  "status": "PAST",
  "errorCode": "RTLS.DATA.E.2101",
  "decorators": [
    {
      "name": "alarmAcknowledgement",
      "updatedBy": "69add548-ec7c-49ba-aed1-0cabb5e2238c",
      "updatedAt": "2019-12-06T16:39:42.352402Z"
    }
  ]
}
```

Using `ro` as the Alarm Detail response object in the example above, the relevant values are described below.

Property	Value	Description
<code>ro.updatedTime</code>	2019-11-29T14:40:58.989-0500	The date and time when this Alarm was last updated (date).
<code>ro.createdTime</code>	2019-11-29T14:40:58.989-0500	The date and time when this Alarm was created (date).
<code>ro.id</code>	88e77d49-1a99-4dd3-b36b-f3860cb26a68	The internal ID of this Alarm (string).
<code>ro.description</code>	Endpoint location not configured!	The Alarm description (string)
<code>ro.source</code>	ENDPOINT	The source of the Alarm (string)
<code>ro.sourceId</code>	9a4e76dc-f263-11e9-99ec-001d054d2784	The internal ID of the Alarm source (string)
<code>ro.occurrenceTime</code>	2019-11-29T14:40:58.971-0500	The time of this Alarm (date).
<code>status</code>	ACTIVE	The reported Alarm status (ACTIVE, ACKNOWLEDGED)
<code>errorCode</code>	RTLS.DATA.E.2101	Error code for internal diagnostic use.
<code>decorators</code>	Array	An array of related information such as the Alarm acknowledgement date and time.

## Alarm Display View

Return the display information for a specified alarm.

### HTTP Header Fields

```
GET /v2/public/alarms/<ALARM-ID>/display HTTP/1.1
Authorization: <TOKEN-TYPE> <ACCESS-TOKEN>
Content-Type: application/json
Cache-Control: no-cache
```

## GET Request Structure

```
https://<HOST-IP>:<HOST-PORT>/v2/public/alarms/<ALARM-ID>/display
```

### Where:

- <HOST-IP> – IP address of the Trellix Lighting API server, and defaults to 192.168.2.100
- <HOST-PORT> – IP port on the Trellix Lighting API server, optional and defaults to 443 for secure (https) connections
- <TOKEN-TYPE> – Type of authentication token (always bearer)
- <ACCESS-TOKEN> – Trellix Lighting API token returned in a Get Public Login Token request
- <ALARM-ID> – Case-sensitive ID of the alarm being requested

## GET Request Example

```
https://192.168.2.100/v2/public/alarms/1e96c895-ee75-4a58-a36e-7d29483822cf/display
```

## JSON Body Example

```
{
  "updatedAt": "2019-12-06T11:39:42.353-0500",
  "id": "1e96c895-ee75-4a58-a36e-7d29483822cf",
  "description": "Endpoint location not configured!",
  "source": "ENDPOINT",
  "sourceId": "9a4e76dc-f263-11e9-99ec-001d054d2784",
  "occurrenceTime": "2019-12-05T15:45:49.658-0500",
  "status": "PAST",
  "errorCode": "RTLS.DATA.E.2101",
  "decorators": [
    {
      "name": "alarmAcknowledgement",
      "updatedBy": "69add548-ec7c-49ba-aec1-0cabb5e2238c",
      "updatedAt": "2019-12-06T16:39:42.352402Z"
    }
  ]
}
```

Using `ro` as the Alarm Display response object in the example above, the relevant values are described below

Property	Value	Description
<code>ro.updatedTime</code>	2019-12-06T11:39:42.353-0500	The date and time when this Alarm was last updated (date).
<code>ro.id</code>	1e96c895-ee75-4a58-a36e-7d29483822cf	The internal ID of this Alarm (string).
<code>ro.description</code>	Endpoint location not configured!	The Alarm description (string)
<code>ro.source</code>	ENDPOINT	The source of the Alarm (string)
<code>ro.sourceId</code>	9a4e76dc-f263-11e9-99ec-001d054d2784	The internal ID of the Alarm source (string)
<code>ro.occurrenceTime</code>	2019-11-29T14:40:58.971-0500	The time of this Alarm (sate).
<code>status</code>	PAST	The reported Alarm status (ACTIVE, ACKNOWLEDGED, PAST)
<code>errorCode</code>	RTLS.DATA.E.2101	Error code for internal diagnostic use.
<code>decorators</code>	Array	An array of related information such as the Alarm acknowledgement date and time.

## Alarm Identity View

Return the identity information for a specified alarm.

### HTTP Header Fields

```
GET /v2/public/alarms/<ALARM-ID>/identity HTTP/1.1
Authorization: <TOKEN-TYPE> <ACCESS-TOKEN>
Content-Type: application/json
Cache-Control: no-cache
```

## GET Request Structure

```
https://<HOST-IP>:<HOST-PORT>/v2/public/alarms/<ALARM-ID>/identity
```

### Where:

- <HOST-IP> – IP address of the Trellix Lighting API server, and defaults to 192.168.2.100
- <HOST-PORT> – IP port on the Trellix Lighting API server, optional and defaults to 443 for secure (https) connections
- <TOKEN-TYPE> – Type of authentication token (always `bearer`)
- <ACCESS-TOKEN> – Trellix Lighting API token returned in a Get Public Login Token request
- <ALARM-ID> – Case-sensitive ID of the alarm being requested

### GET Request Example

```
https://192.168.2.100/v2/public/alarms/1e96c895-ee75-4a58-a36e-7d29483822cf/identity
```

### JSON Body Example

```
{
  "id": "1e96c895-ee75-4a58-a36e-7d29483822cf",
  "description": "Endpoint location not configured!"
}
```

Using `ro` as the Alarm Identity response object in the example above, the relevant values are described below

Property	Value	Description
<code>ro.id</code>	1e96c895-ee75-4a58-a36e-7d29483822cf	The internal ID of this Alarm (string).
<code>ro.description</code>	Endpoint location not configured!	The Alarm description (string)

## 2.3 – Area Calls

The Area API calls are used to discover the areas on a network, get details for a specific area, and to discover the endpoints and devices that belong to an area.

### 2.3.1 – Requests for All Areas

This section describes API calls that provide various ways to view a list of areas on the network.

#### All Areas Detail List

Returns a detail list of all configured areas in the specified building.

#### HTTP Header Fields

```
GET /v2/public/<BUILDING-ID>/areas/detail HTTP/1.1
Authorization: <TOKEN-TYPE> <ACCESS-TOKEN>
Content-Type: application/json
Cache-Control: no-cache
```

### GET Request Structure

```
https://<HOST-IP>:<HOST-PORT>/v2/public/<BUILDING-ID>/areas/detail
```

### Where:

- <HOST-IP> – IP address of the Trellix Lighting API server, and defaults to 192.168.2.100
- <HOST-PORT> – IP port on the Trellix Lighting API server, optional and defaults to 443 for secure (https) connections
- <TOKEN-TYPE> – Type of authentication token (always `bearer`)
- <ACCESS-TOKEN> – Trellix Lighting API token returned in a Get Public Login Token request
- <BUILDING-ID> – Case-sensitive ID of the building to which the requested area belongs

### GET Request Example

```
https://192.168.2.100/v2/public/C1B1/areas/detail
```

### JSON Body Example

```
{
  "content": [
    { AREA_OBJECT_PROPERTIES },
    { AREA_OBJECT_PROPERTIES }
  ],
}
```

```

"last": true,
"totalPages": 1,
"totalElements": 2,
"numberOfElements": 2,
"first": true,
"size": 100,
"number": 0
}

```

Using `ro` as the All Areas Detail response object in the example above, the relevant values are described below. See [Common Response Properties](#) for descriptions of the standard list response properties.

**NOTE**

Some nested object properties above have been replaced with uppercase labels (`ABC_OBJECT_PROPERTIES`) for simplicity.

Property	Value	Description
<code>ro.content</code>	Array	Zero or more area objects. See <a href="#">Area Detail View</a> for more information.

**All Areas Display List**

Return a display list of all configured areas in the specified building.

**HTTP Header Fields**

```

GET /v2/public/<BUILDING-ID>/areas/display HTTP/1.1
Authorization: <TOKEN-TYPE> <ACCESS-TOKEN>
Content-Type: application/json
Cache-Control: no-cache

```

**GET Request Structure**

```
https://<HOST-IP>:<HOST-PORT>/v2/public/<BUILDING-ID>/areas/display
```

**Where:**

- `<HOST-IP>` – IP address of the Trellix Lighting API server, and defaults to 192.168.2.100
- `<HOST-PORT>` – IP port on the Trellix Lighting API server, optional and defaults to 443 for secure (https) connections
- `<TOKEN-TYPE>` – Type of authentication token (always bearer)
- `<ACCESS-TOKEN>` – Trellix Lighting API token returned in a Get Public Login Token request
- `<BUILDING-ID>` – Case-sensitive ID of the building to which the requested area belongs

**GET Request Example**

```
https://192.168.2.100/v2/public/C1B1/areas/display
```

**JSON Body Example**

```

{
  "content": [
    { AREA_OBJECT_PROPERTIES },
    { AREA_OBJECT_PROPERTIES }
  ],
  "last": true,
  "totalPages": 1,
  "totalElements": 1,
  "numberOfElements": 1,
  "first": true,
  "size": 100,
  "number": 0
}

```

Using `ro` as the All Areas Display response object in the example above, the relevant values are described below. See [Common Response Properties](#) for descriptions of the standard list response properties.

**NOTE**

Some nested object properties above have been replaced with uppercase labels (`ABC_OBJECT_PROPERTIES`) for simplicity.

Property	Value	Description
<code>ro.content</code>	Array	Zero or more area objects. See <a href="#">Area Display View</a> for more information.

**All Areas Identity List**

Return an identity list of all configured areas in the specified building.

## HTTP Header Fields

```
GET /v2/public/<BUILDING-ID>/areas/identity HTTP/1.1
Authorization: <TOKEN-TYPE> <ACCESS-TOKEN>
Content-Type: application/json
Cache-Control: no-cache
```

## GET Request Structure

```
https://<HOST-IP>:<HOST-PORT>/v2/public/<BUILDING-ID>/areas/identity
```

### Where:

- **<HOST-IP>** – IP address of the Trellix Lighting API server, and defaults to 192.168.2.100
- **<HOST-PORT>** – IP port on the Trellix Lighting API server, optional and defaults to 443 for secure (https) connections
- **<TOKEN-TYPE>** – Type of authentication token (always `bearer`)
- **<ACCESS-TOKEN>** – Trellix Lighting API token returned in a Get Public Login Token request
- **<BUILDING-ID>** – ID of the building to which the requested area belongs

## GET Request Example

```
https://192.168.2.100/v2/public/C1B1/areas/identity
```

## JSON Body Example

```
{
  "content": [
    {
      "publicId": "A1",
      "type": "52474f38-38aa-4ee8-8893-5541c0f5d04e",
      "name": "Default"
    }
  ],
  "last": true,
  "totalPages": 1,
  "totalElements": 1,
  "numberOfElements": 1,
  "first": true,
  "size": 100,
  "number": 0
}
```

Using `ro` as the All Areas Identity response object in the example above, the relevant values are described below. See the [Common Response Properties](#) for more information about the standard list property descriptions.

Property	Value	Description
<code>ro.content</code>	Array	Zero or more area objects. See <a href="#">Area Identity View</a> for more information.

## All Areas List in Ascending Order

Return an identity list of all configured areas in the specified building, sorted in ascending order by name.

## HTTP Header Fields

```
GET /v2/public/<BUILDING-ID>/areas/identity?page=<PAGE-NUMBER>&size=<RESULTS-PER-PAGE>&sort=<SORT-FIELD>,<SORT-ORDER> HTTP/1.1
Authorization: <TOKEN-TYPE> <ACCESS-TOKEN>
Content-Type: application/json
Cache-Control: no-cache
```

## GET Request Structure

```
https://<HOST-IP>:<HOST-PORT>/v2/public/<BUILDING-ID>/areas/identity?page=<PAGE-NUMBER>&size=<RESULTS-PER-PAGE>&sort=<SORT-FIELD>,<SORT-ORDER>
```

### Where:

- **<HOST-IP>** – IP address of the Trellix Lighting API server, and defaults to 192.168.2.100
- **<HOST-PORT>** – IP port on the Trellix Lighting API server, optional and defaults to 443 for secure (https) connections
- **<TOKEN-TYPE>** – Type of authentication token (always `bearer`)
- **<ACCESS-TOKEN>** – Trellix Lighting API token returned in a Get Public Login Token request
- **<BUILDING-ID>** – Case-sensitive ID of the building to which the requested area belongs
- **<PAGE-NUMBER>** – Page number to be returned

- `<RESULTS-PER-PAGE>` – Results per page. Maximum size is 100
- `<SORT-FIELD>` – Value by which to sort the listed areas
- `<SORT-ORDER>` – Sort order (always `ASC`)

### GET Request Example

```
https://192.168.2.100/v2/public/C1B1/areas/identity?page=1&size=10&sort=name,DESC
```

### JSON Body Example

```
{
  "content": [
    { AREA_OBJECT_PROPERTIES },
    { AREA_OBJECT_PROPERTIES }
  ],
  "last": true,
  "totalPages": 1,
  "totalElements": 2,
  "numberOfElements": 2,
  "first": true,
  "sort": [
    {
      "direction": "ASC",
      "property": "name",
      "ignoreCase": false,
      "nullHandling": "NATIVE",
      "descending": false,
      "ascending": true
    }
  ],
  "size": 10,
  "number": 0
}
```

Using `ro` as the All Areas in Ascending Order JSON response object in the example above, the relevant values are described below. See the [Common Response Properties](#) for more information about the standard list property descriptions.

Property	Value	Description
<code>ro.content</code>	Array	Zero or more area objects. See <a href="#">Area Identity View</a> for more information

### All Areas List in Descending Order

Return an identity list of all configured areas in the specified building, sorted in descending order by name.

### HTTP Header Fields

```
GET /v2/public/<BUILDING-ID>/areas/identity?page=1&size=10&sort=name,ASC HTTP/1.1
Authorization: <TOKEN-TYPE> <ACCESS-TOKEN>
Content-Type: application/json
Cache-Control: no-cache
```

### GET Request Structure

```
https://<HOST-IP>:<HOST-PORT>/v2/public/<BUILDING-ID>/areas/identity?page=<PAGE-NUMBER>&size=<RESULTS-PER-PAGE>&sort=<SORT-FIELD>,<SORT-ORDER>
```

Where:

- `<HOST-IP>` – IP address of the Trellix Lighting API server, and defaults to `192.168.2.100`
- `<HOST-PORT>` – IP port on the Trellix Lighting API server, optional and defaults to `443` for secure (https) connections
- `<TOKEN-TYPE>` – Type of authentication token (always `bearer`)
- `<ACCESS-TOKEN>` – Trellix Lighting API token returned in a Get Public Login Token request
- `<BUILDING-ID>` – Case-sensitive ID of the building to which the requested area belongs
- `<PAGE-NUMBER>` – Page number to be returned
- `<RESULTS-PER-PAGE>` – Results per page. Maximum size is 100
- `<SORT-FIELD>` – Value by which to sort the listed areas
- `<SORT-ORDER>` – Sort order (always `DESC`)

### GET Request Example

```
https://192.168.2.100/v2/public/C1B1/areas/identity?page=1&size=10&sort=name,DESC
```



## JSON Body Example

```
{
  "content": [
    { AREA_OBJECT_PROPERTIES },
    { AREA_OBJECT_PROPERTIES }
  ],
  "last": true,
  "totalPages": 1,
  "totalElements": 2,
  "numberOfElements": 2,
  "first": true,
  "sort": [
    {
      "direction": "DESC",
      "property": "name",
      "ignoreCase": false,
      "nullHandling": "NATIVE",
      "descending": true,
      "ascending": false
    }
  ],
  "size": 10,
  "number": 0
}
```

Using `ro` as the All Areas in Descending Order JSON response object in the example above, the relevant values are described below. See the [Common Response Properties](#) for more information about the standard list property descriptions.

Property	Value	Description
<code>ro.content</code>	Array	Zero or more area objects. See <a href="#">Area Identity View</a> for more information.

### 2.3.2 – Requests for a Specific Area

This section describes API calls that provide various views of the details of one area on the network.

#### Area Detail View

Return the detail information for a specified area.

#### HTTP Header Fields

```
GET /v2/public/<BUILDING-ID>/areas/<AREA-ID>/detail HTTP/1.1
Authorization: <TOKEN-TYPE> <ACCESS-TOKEN>
Content-Type: application/json
Cache-Control: no-cache
```

#### GET Request Structure

```
https://<HOST-IP>:<HOST-PORT>/v2/public/<BUILDING-ID>/areas/<AREA-ID>/detail
```

Where:

- `<HOST-IP>` – IP address of the Trellix Lighting API server, and defaults to `192.168.2.100`
- `<HOST-PORT>` – IP port on the Trellix Lighting API server, optional and defaults to `443` for secure (https) connections
- `<TOKEN-TYPE>` – Type of authentication token (always `bearer`)
- `<ACCESS-TOKEN>` – Trellix Lighting API token returned in a Get Public Login Token request
- `<BUILDING-ID>` – Case-sensitive ID of the building to which the requested area belongs
- `<AREA-ID>` – Case-sensitive ID of the area being requested

#### GET Request Example

```
https://192.168.2.100/v2/public/C1B1/areas/A1/detail
```

#### JSON Body Example

```
{
  "updatedAt": "2018-06-05T15:58:57.961-0400",
  "createdAt": "2018-06-05T15:48:17.641-0400",
  "publicId": "A1",
  "type": "52474f38-38aa-4ee8-8893-5541c0f5d04e",
  "name": "Construction Area",
  "selectedScene": 1,
}
```

```

"areaStatus": "GOOD",
"sceneToSceneFadeTime": 1500,
"offToSceneFadeTime": 1500,
"zones": [
  { ZONE_OBJECT_PROPERTIES },
  { ZONE_OBJECT_PROPERTIES }
],
"occupancySets": [
  { OCCUPANCY_SET__OBJECT_PROPERTIES },
  { OCCUPANCY_SET__OBJECT_PROPERTIES }
],
"scenes": [
  { SCENE__OBJECT_PROPERTIES },
  { SCENE__OBJECT_PROPERTIES }
],
"totalScenes": 1,
"holdOccupancyDuration": 3600000,
"areaDecorators": [
  { AREA_DECORATOR_OBJECT_PROPERTIES },
  { AREA_DECORATOR_OBJECT_PROPERTIES }
],
"endpoints": [
  { ENDPOINT_OBJECT_PROPERTIES },
  { ENDPOINT_OBJECT_PROPERTIES }
],
"capacity": 0,
"isReachable": true,
"isDefault": true,
"hasAlerts": false,
"isOccupiedLogical": true,
"isOccupiedPhysical": true,
"isHoldOccupancy": true
}

```

Using `ro` as the Area Detail response object in the example above, the relevant values are described below. See the [Common Response Properties](#) for more information about the standard list property descriptions.

#### NOTE

Some nested object properties above have been replaced with uppercase labels (`ABC_OBJECT_PROPERTIES`) for simplicity.

Property	Value	Description
<code>ro.publicId</code>	A1	The ID of this area (string).
<code>ro.name</code>	Construction Area	The name of this area (string).
<code>ro.areaStatus</code>	GOOD	The status of this area (string).
<code>ro.selectedScene</code>	2	The ID of currently selected scene (string)
<code>ro.sceneToSceneFadeTime</code>	1500	The configured scene fade time (number).
<code>ro.offToSceneFadeTime</code>	1500	The configured scene off to on time (number).
<code>ro.zones</code>	Array	Selected data for zero or more zone objects in this area. See <a href="#">Area Zone Detail View Calls</a> for more information.
<code>ro.occupancySets</code>	Array	Selected data for zero or more occupancy set objects in this area. See <a href="#">Occupancy Set Detail View</a> for more information.
<code>ro.scenes</code>	Array	Selected data for zero or more scene objects in this area. See <a href="#">Requests for a Specific Scene in One Area</a> for more information.
<code>ro.areaDecorators</code>	Array	Selected data for zero or more area decorator objects.
<code>ro.endpoints</code>	Array	Selected data for zero or more endpoint objects. See <a href="#">Endpoint Detail View</a> for more information.
<code>ro.totalScenes</code>	2	Number of configured scenes in this area (number).
<code>ro.holdOccupancyDuration</code>	3600000	Configured hold occupancy time (number).
<code>ro.isReachable</code>	true	Whether this area is reachable (boolean).
<code>ro.isDefault</code>	true	Whether this is the default area (boolean).
<code>ro.hasAlerts</code>	false	Whether there are active alerts in this area (boolean).
<code>ro.isOccupiedLogical</code>	true	Whether this area is logically occupied. (boolean).

Property	Value	Description
<code>ro.isOccupiedPhysical</code>	true	Whether this area is physically occupied (boolean).
<code>ro.isHoldOccupancy</code>	false	Whether this area has an occupancy hold status. (boolean).

### Area Display View

Return the display information for a specified area.

#### HTTP Header Fields

```
GET /v2/public/<BUILDING-ID>/areas/<AREA-ID>/display HTTP/1.1
Authorization: <TOKEN-TYPE> <ACCESS-TOKEN>
Content-Type: application/json
Cache-Control: no-cache
```

#### GET Request Structure

```
https://<HOST-IP>:<HOST-PORT>/v2/public/<BUILDING-ID>/areas/<AREA-ID>/display
```

Where:

- `<HOST-IP>` – IP address of the Trellix Lighting API server, and defaults to `192.168.2.100`
- `<HOST-PORT>` – IP port on the Trellix Lighting API server, optional and defaults to `443` for secure (https) connections
- `<TOKEN-TYPE>` – Type of authentication token (always `bearer`)
- `<ACCESS-TOKEN>` – Trellix Lighting API token returned in a Get Public Login Token request
- `<BUILDING-ID>` – Case-sensitive ID of the building to which the requested area belongs
- `<AREA-ID>` – Case-sensitive ID of the area being requested

#### GET Request Example

```
https://192.168.2.100/v2/public/C1B1/areas/A1/display
```

#### JSON Body Example

```
{
  "updatedAt": "2018-06-05T15:58:57.961-0400",
  "publicId": "A1",
  "type": "52474f38-38aa-4ee8-8893-5541c0f5d04e",
  "name": "Construction Area",
  "selectedScene": 2,
  "zones": [
    { ZONE_OBJECT_PROPERTIES },
    { ZONE_OBJECT_PROPERTIES }
  ],
  "occupancySets": [
    { OCCUPANCY_SET_OBJECT_PROPERTIES },
    { OCCUPANCY_SET_OBJECT_PROPERTIES }
  ],
  "scenes": [
    { SCENE_OBJECT_PROPERTIES },
    { SCENE_OBJECT_PROPERTIES }
  ],
  "areaDecorators": [
    { AREA_DECORATOR_OBJECT_PROPERTIES },
    { AREA_DECORATOR_OBJECT_PROPERTIES }
  ],
  "endpoints": [
    { ENDPOINT_OBJECT_PROPERTIES },
    { ENDPOINT_OBJECT_PROPERTIES }
  ],
  "capacity": 0,
  "isDefault": true,
  "hasAlerts": false
}
```

Using `ro` as the Area Display response object in the example above, the relevant values are described below.

Property	Value	Description
<code>ro.publicId</code>	A1	The ID of this area (string).
<code>ro.name</code>	Construction Area	The name of this area (string).

Property	Value	Description
<code>ro.selectedScene</code>	2	The ID of currently selected scene (string)
<code>ro.zones</code>	Array	Selected data for zero or more zone objects in this area. See <a href="#">Area Zone Detail View Calls</a> for more information.
<code>ro.occupancySets</code>	Array	Selected data for zero or more occupancy set objects in this area. See <a href="#">Occupancy Set Detail View</a> for more information.
<code>ro.scenes</code>	Array	Selected data for zero or more scene objects in this area. See <a href="#">Requests for a Specific Scene in One Area</a> for more information.
<code>ro.areaDecorators</code>	Array	Selected data for zero or more area decorator objects.
<code>ro.endpoints</code>	Array	Selected data for zero or more endpoint objects. See <a href="#">Endpoint Detail View</a> for more information.
<code>ro.capacity</code>	0	The capacity value for this area (boolean).
<code>ro.isDefault</code>	true	Whether this is the default area (boolean).
<code>ro.hasAlerts</code>	false	Whether there are active alerts in this area (boolean).

### Area Identity View

Return the identity information for a specified area.

#### HTTP Header Fields

```
GET /v2/public/<BUILDING-ID>/areas/<AREA-ID>/identity HTTP/1.1
Authorization: <TOKEN-TYPE> <ACCESS-TOKEN>
Content-Type: application/json
Cache-Control: no-cache
```

#### GET Request Structure

```
https://<HOST-IP>:<HOST-PORT>/v2/public/<BUILDING-ID>/areas/<AREA-ID>/identity
```

Where:

- `<HOST-IP>` – IP address of the Trellix Lighting API server, and defaults to 192.168.2.100
- `<HOST-PORT>` – IP port on the Trellix Lighting API server, optional and defaults to 443 for secure (https) connections
- `<TOKEN-TYPE>` – Type of authentication token (always `bearer`)
- `<ACCESS-TOKEN>` – Trellix Lighting API token returned in a Get Public Login Token request
- `<BUILDING-ID>` – Case-sensitive ID of the building to which the requested area belongs
- `<AREA-ID>` – Case-sensitive ID of the area being requested

#### GET Request Example

```
https://192.168.2.100/v2/public/C1B1/areas/A1/identity
```

#### JSON Body Example

```
{
  "publicId": "A1",
  "type": "52474f38-38aa-4ee8-8893-5541c0f5d04e",
  "name": "Construction Area"
}
```

Using `ro` as the Area Display response object in the example above, the relevant values are described below.

Property	Value	Description
<code>ro.publicId</code>	A1	The ID of this area (string).
<code>ro.type</code>	52474f38...	The type signature of this area (string).
<code>ro.name</code>	Construction Area	The name of this area (string).

### 2.3.3 – Requests for All Endpoints in One Area

This section describes API calls that provide various views of the endpoints assigned to a single area on the network.

#### All Endpoints Detail List

Returns a detail list of the endpoints in a specified area.

## HTTP Header Fields

```
GET /v2/public/<BUILDING-ID>/areas/<AREA-ID>/endpoints/detail HTTP/1.1
Authorization: <TOKEN-TYPE> <ACCESS-TOKEN>
Content-Type: application/json
Cache-Control: no-cache
```

## GET Request Structure

```
https://<HOST-IP>:<HOST-PORT>/v2/public/<BUILDING-ID>/areas/<AREA-ID>/endpoints/detail
```

### Where:

- **<HOST-IP>** – IP address of the Trellix Lighting API server, and defaults to 192.168.2.100
- **<HOST-PORT>** – IP port on the Trellix Lighting API server, optional and defaults to 443 for secure (https) connections
- **<TOKEN-TYPE>** – Type of authentication token (always `bearer`)
- **<ACCESS-TOKEN>** – Trellix Lighting API token returned in a Get Public Login Token request
- **<BUILDING-ID>** – Case-sensitive ID of the building to which the target area belongs
- **<AREA-ID>** – Case-sensitive ID of the area to which the endpoints are assigned

## GET Request Example

```
https://192.168.2.100/v2/public/C1B1/areas/A1/endpoints/detail
```

## JSON Body Example

```
{
  "content": [
    { ENDPOINT_OBJECT_PROPERTIES },
    { ENDPOINT_OBJECT_PROPERTIES }
  ],
  "last": true,
  "totalPages": 1,
  "totalElements": 1,
  "numberOfElements": 1,
  "first": true,
  "size": 100,
  "number": 0
}
```

Using `ro` as the All Endpoints Detail List response object in the example above, the relevant values are described below. See [Common Response Properties](#) for descriptions of the standard list response properties.

### NOTE

Some nested object properties above have been replaced with uppercase labels (`ABC_OBJECT_PROPERTIES`) for simplicity.

Property	Value	Description
<code>ro.content</code>	Array	One or more endpoint objects. See <a href="#">Endpoint Detail View</a> for more information.

## All Endpoints Display List

Returns a display list of the endpoints in a specified area.

## HTTP Header Fields

```
GET /v2/public/<BUILDING-ID>/areas/<AREA-ID>/endpoints/display HTTP/1.1
Authorization: <TOKEN-TYPE> <ACCESS-TOKEN>
Content-Type: application/json
Cache-Control: no-cache
```

## GET Request Structure

```
https://<HOST-IP>:<HOST-PORT>/v2/public/<BUILDING-ID>/areas/<AREA-ID>/endpoints/display
```

### Where:

- **<HOST-IP>** – IP address of the Trellix Lighting API server, and defaults to 192.168.2.100
- **<HOST-PORT>** – IP port on the Trellix Lighting API server, optional and defaults to 443 for secure (https) connections
- **<TOKEN-TYPE>** – Type of authentication token (always `bearer`)
- **<ACCESS-TOKEN>** – Trellix Lighting API token returned in a Get Public Login Token request
- **<BUILDING-ID>** – Case-sensitive ID of the building to which the target area belongs
- **<AREA-ID>** – Case-sensitive ID of the area to which the endpoints are assigned

## GET Request Example

```
https://192.168.2.100/v2/public/C1B1/areas/A1/endpoints/display
```

## JSON Body Example

```
{
  "content": [
    { ENDPOINT_OBJECT_PROPERTIES },
    { ENDPOINT_OBJECT_PROPERTIES }
  ],
  "last": true,
  "totalPages": 1,
  "totalElements": 1,
  "numberOfElements": 8,
  "first": true,
  "size": 100,
  "number": 0
}
```

Using `ro` as the All Endpoints Display List response object in the example above, the relevant values are described below. See [Common Response Properties](#) for descriptions of the standard list response properties.

### NOTE

Some nested object properties above have been replaced with uppercase labels (`ABC_OBJECT_PROPERTIES`) for simplicity.

Property	Value	Description
<code>ro.content</code>	Array	One or more endpoint objects. See <a href="#">Endpoint Display View</a> for more information.

## All Endpoints Identity List

Returns an identity list of the endpoints in a specified area.

### HTTP Header Fields

```
GET /v2/public/<BUILDING-ID>/areas/<AREA-ID>/endpoints/identity HTTP/1.1
Authorization: <TOKEN-TYPE> <ACCESS-TOKEN>
Content-Type: application/json
Cache-Control: no-cache
```

## GET Request Structure

```
https://<HOST-IP>:<HOST-PORT>/v2/public/<BUILDING-ID>/areas/<AREA-ID>/endpoints/identity
```

Where:

- `<HOST-IP>` – IP address of the Trellix Lighting API server, and defaults to `192.168.2.100`
- `<HOST-PORT>` – IP port on the Trellix Lighting API server, optional and defaults to `443` for secure (https) connections
- `<TOKEN-TYPE>` – Type of authentication token (always `bearer`)
- `<ACCESS-TOKEN>` – Trellix Lighting API token returned in a Get Public Login Token request
- `<BUILDING-ID>` – Case-sensitive ID of the building to which the target area belongs
- `<AREA-ID>` – Case-sensitive ID of the area to which the endpoints are assigned

## GET Request Example

```
https://192.168.2.100/v2/public/C1B1/areas/A1/endpoints/identity
```

## JSON Body Example

```
{
  "content": [
    { ENDPOINT_OBJECT_PROPERTIES },
    { ENDPOINT_OBJECT_PROPERTIES }
  ],
  "last": true,
  "totalPages": 1,
  "totalElements": 4,
  "numberOfElements": 4,
  "first": true,
  "size": 100,
  "number": 0
}
```

Using `ro` as the All Endpoints Identity List response object in the example above, the relevant values are described below. See [Common Response Properties](#) for descriptions of the standard list response properties.

**NOTE**

Some nested object properties above have been replaced with uppercase labels (`ABC_OBJECT_PROPERTIES`) for simplicity.

Property	Value	Description
<code>ro.content</code>	Array	One or more endpoint objects. See <a href="#">Endpoint Identity View</a> for more information.

Discontinued  
06-02-2023

## All Endpoints List in Ascending Order

Returns an identity list of all endpoints in a specified area, sorted in ascending order by name.

### HTTP Header Fields

```
GET /v2/public/<BUILDING-ID>/areas/<AREA-ID>/endpoints/identity?page=<PAGE-NUMBER>&size=<RESULTS-PER-PAGE>&sort=<SORT-FIELD>,<SORT-ORDER> HTTP/1.1
Authorization: <TOKEN-TYPE> <ACCESS-TOKEN>
Content-Type: application/json
Cache-Control: no-cache
```

### GET Request Structure

```
https://<HOST-IP>:<HOST-PORT>/v2/public/<BUILDING-ID>/areas/<AREA-ID>/endpoints/identity?page=<PAGE-NUMBER>&size=<RESULTS-PER-PAGE>&sort=<SORT-FIELD>,<SORT-ORDER>
```

Where:

- **<HOST-IP>** – IP address of the Trellix Lighting API server, and defaults to 192.168.2.100
- **<HOST-PORT>** – IP port on the Trellix Lighting API server, optional and defaults to 443 for secure (https) connections
- **<TOKEN-TYPE>** – Type of authentication token (always *bearer*)
- **<ACCESS-TOKEN>** – Trellix Lighting API token returned in a Get Public Login Token request
- **<BUILDING-ID>** – Case-sensitive ID of the building to which the target area belongs
- **<AREA-ID>** – Case-sensitive ID of the area to which the endpoints are assigned
- **<PAGE-NUMBER>** – Page number to be returned
- **<RESULTS-PER-PAGE>** – Results per page, maximum size is 100
- **<SORT-FIELD>** – Value by which to sort the listed areas (always *name*)
- **<SORT-ORDER>** – Sort order (always *ASC*)

### GET Request Example

```
https://192.168.2.100/v2/public/C1B1/areas/A1/endpoints/identity?page=1&size=10&sort=name,ASC
```

### JSON Body Example

```
{
  "content": [
    { ENDPOINT_OBJECT_PROPERTIES },
    { ENDPOINT_OBJECT_PROPERTIES }
  ],
  "last": true,
  "totalPages": 1,
  "totalElements": 8,
  "numberOfElements": 8,
  "first": true,
  "sort": [
    {
      "direction": "ASC",
      "property": "name",
      "ignoreCase": false,
      "nullHandling": "NATIVE",
      "descending": false,
      "ascending": true
    }
  ],
  "size": 10,
  "number": 0
}
```

Using `ro` as the ascending All Endpoints List response object in the example above, the relevant values are described below. See [Common Response Properties](#) for descriptions of the standard list response properties.

Property	Value	Description
<code>ro.content</code>	Array	One or more endpoint objects. See <a href="#">Endpoint Identity View</a> for more information.

## All Endpoints List in Descending Order

Returns an identity list of all endpoints in a specified area, sorted in descending order by name.



## HTTP Header Fields

```
GET /v2/public/<BUILDING-ID>/areas/<AREA-ID>/endpoints/identity?page=<PAGE-
NUMBER>&size=<RESULTS-PER-PAGE>&sort=<SORT-FIELD>,<SORT-ORDER> HTTP/1.1
Authorization: <TOKEN-TYPE> <ACCESS-TOKEN>
Content-Type: application/json
Cache-Control: no-cache
```

## GET Request Structure

```
https://<HOST-IP>:<HOST-PORT>/v2/public/<BUILDING-ID>/areas/<AREA-
ID>/endpoints/identity?page=<PAGE-NUMBER>&size=<RESULTS-PER-PAGE>&sort=<SORT-FIELD>,<SORT-ORDER>
```

### Where:

- **<HOST-IP>** – IP address of the Trellix Lighting API server, and defaults to 192.168.2.100
- **<HOST-PORT>** – IP port on the Trellix Lighting API server, optional and defaults to 443 for secure (https) connections
- **<TOKEN-TYPE>** – Type of authentication token (always `bearer`)
- **<ACCESS-TOKEN>** – Trellix Lighting API token returned in a Get Public Login Token request
- **<BUILDING-ID>** – Case-sensitive ID of the building to which the target area belongs
- **<AREA-ID>** – Case-sensitive ID of the area to which the endpoints are assigned.
- **<PAGE-NUMBER>** – Page number to be returned
- **<RESULTS-PER-PAGE>** – Results per page, maximum size is 100
- **<SORT-FIELD>** – Value by which to sort the listed areas (always `name`)
- **<SORT-ORDER>** – Sort order (always `DESC`)

## GET Request Example

```
https://192.168.2.100/v2/public/C1B1/areas/A1/endpoints/identity?page=1&size=10&sort=name,
DESC
```

## JSON Body Example

```
{
  "content": [
    { ENDPOINT_OBJECT_PROPERTIES },
    { ENDPOINT_OBJECT_PROPERTIES }
  ],
  "last": true,
  "totalPages": 1,
  "totalElements": 2,
  "numberOfElements": 8,
  "first": true,
  "sort": [
    {
      "direction": "DESC",
      "property": "name",
      "ignoreCase": false,
      "nullHandling": "NATIVE",
      "descending": true,
      "ascending": false
    }
  ],
  "size": 10,
  "number": 0
}
```

Using `ro` as the descending All Endpoints List response object in the example above, the relevant values are described below. See [Common Response Properties](#) for descriptions of the standard list response properties.

### NOTE

Some nested object properties above have been replaced with uppercase labels (`ABC_OBJECT_PROPERTIES`) for simplicity.

Property	Value	Description
<code>ro.content</code>	Array	One or more endpoint objects. See <a href="#">Endpoint Identity View</a> for more information.

### 2.3.4 – Requests for All Devices in One Area

This section describes API calls that provide various views of the devices assigned to a single area on the network.

## All Devices Detail List

Returns a detail list of all devices in a specified area.

### HTTP Header Fields

```
GET /v2/public/<BUILDING-ID>/areas/<AREA-ID>/devices/detail HTTP/1.1
Authorization: <TOKEN-TYPE> <ACCESS-TOKEN>
Content-Type: application/json
Cache-Control: no-cache
```

### GET Request Structure

```
https://<HOST-IP>:<HOST-PORT>/v2/public/<BUILDING-ID>/areas/<AREA-ID>/devices/detail
```

Where:

- **<HOST-IP>** – IP address of the Trellix Lighting API server, and defaults to 192.168.2.100
- **<HOST-PORT>** – IP port on the Trellix Lighting API server, optional and defaults to 443 for secure (https) connections
- **<TOKEN-TYPE>** – Type of authentication token (always `bearer`)
- **<ACCESS-TOKEN>** – Trellix Lighting API token returned in a Get Public Login Token request
- **<BUILDING-ID>** – Case-sensitive ID of the building to which the target area belongs
- **<AREA-ID>** – Case-sensitive ID of the area to which the devices are assigned

### GET Request Example

```
https://192.168.2.100/v2/public/C1B1/areas/A1/devices/detail
```

### JSON Body Example

```
{
  "content": [
    { DEVICE_OBJECT_PROPERTIES },
    { DEVICE_OBJECT_PROPERTIES }
  ],
  "last": true,
  "totalPages": 1,
  "totalElements": 2,
  "numberOfElements": 2,
  "first": true,
  "size": 100,
  "number": 0
}
```

Using `ro` as the All Devices Detail List JSON response object in the example above, the relevant values are described below. See the [Common Response Properties](#) for descriptions of the standard list properties.

#### NOTE

Some nested object properties above have been replaced with uppercase labels (`ABC_OBJECT_PROPERTIES`) for simplicity.

Property	Value	Description
<code>ro.content</code>	Array	Zero or more device objects. See <a href="#">Device Detail View</a> for more information.

## All Devices Display List

Returns a display list of all devices in a specified area.

### HTTP Header Fields

```
GET /v2/public/<BUILDING-ID>/areas/<AREA-ID>/devices/display HTTP/1.1
Authorization: <TOKEN-TYPE> <ACCESS-TOKEN>
Content-Type: application/json
Cache-Control: no-cache
```

### GET Request Structure

```
https://<HOST-IP>:<HOST-PORT>/v2/public/<BUILDING-ID>/areas/<AREA-ID>/devices/display
```

Where:

- **<HOST-IP>** – IP address of the Trellix Lighting API server, and defaults to 192.168.2.100
- **<HOST-PORT>** – IP port on the Trellix Lighting API server, optional and defaults to 443 for secure (https) connections
- **<TOKEN-TYPE>** – Type of authentication token (always `bearer`)
- **<ACCESS-TOKEN>** – Trellix Lighting API token returned in a Get Public Login Token request

- `<BUILDING-ID>` – Case-sensitive ID of the building to which the target area belongs
- `<AREA-ID>` – Case-sensitive ID of the area to which the devices are assigned

### GET Request Example

```
https://192.168.2.100/v2/public/C1B1/areas/A1/devices/display
```

### JSON Body Example

```
{
  "content": [
    { DEVICE_OBJECT_PROPERTIES },
    { DEVICE_OBJECT_PROPERTIES }
  ],
  "last": true,
  "totalPages": 1,
  "totalElements": 2,
  "numberOfElements": 2,
  "first": true,
  "size": 100,
  "number": 0
}
```

Using `ro` as the All Devices Display List JSON response object in the example above, the relevant values are described below. See the [Common Response Properties](#) for descriptions of the standard list properties.

#### NOTE

Some nested object properties above have been replaced with uppercase labels (`ABC_OBJECT_PROPERTIES`) for simplicity.

Property	Value	Description
<code>ro.content</code>	Array	Zero or more device objects. See <a href="#">Device Display View</a> for more information.

### All Devices Identity List

Returns an identity list of all devices in a specified area.

#### HTTP Header Fields

```
GET /v2/public/<BUILDING-ID>/areas/<AREA-ID>/devices/identity HTTP/1.1
Authorization: <TOKEN-TYPE> <ACCESS-TOKEN>
Content-Type: application/json
Cache-Control: no-cache
```

### GET Request Structure

```
https://<HOST-IP>:<HOST-PORT>/v2/public/<BUILDING-ID>/areas/<AREA-ID>/devices/identity
```

#### Where:

- `<HOST-IP>` – IP address of the Trellix Lighting API server, and defaults to `192.168.2.100`
- `<HOST-PORT>` – IP port on the Trellix Lighting API server, optional and defaults to `443` for secure (https) connections
- `<TOKEN-TYPE>` – Type of authentication token (always `bearer`)
- `<ACCESS-TOKEN>` – Trellix Lighting API token returned in a Get Public Login Token request
- `<BUILDING-ID>` – Case-sensitive ID of the building to which the target area belongs
- `<AREA-ID>` – Case-sensitive ID of the area to which the devices are assigned

### GET Request Example

```
https://192.168.2.100/v2/public/C1B1/areas/A1/devices/identity
```

### JSON Body Example

```
{
  "content": [
    { DEVICE_OBJECT_PROPERTIES },
    { DEVICE_OBJECT_PROPERTIES }
  ],
  "last": true,
  "totalPages": 1,
  "totalElements": 2,
  "numberOfElements": 2,
  "first": true,
  "size": 100,
}
```

```
"number": 0
}
```

Using `ro` as the All Devices Identity List JSON response object in the example above, the relevant values are described below. See the [Common Response Properties](#) for descriptions of the standard list properties.

**NOTE**

Some nested object properties above have been replaced with uppercase labels (`ABC_OBJECT_PROPERTIES`) for simplicity.

Property	Value	Description
<code>ro.content</code>	Array	Zero or more device objects. See <a href="#">Device Identity View</a> for more information.

**All Devices List in Ascending Order**

Returns an identity list of all devices in a specified area, sorted in ascending order by name.

**HTTP Header Fields**

```
GET /v2/public/<BUILDING-ID>/areas/<AREA-ID>/devices/identity?page=<PAGE-
NUMBER>&size=<RESULTS-PER-PAGE>&sort=<SORT-FIELD>,<SORT-ORDER> HTTP/1.1
Authorization: <TOKEN-TYPE> <ACCESS-TOKEN>
Content-Type: application/json
Cache-Control: no-cache
```

**GET Request Structure**

```
https://<HOST-IP>:<HOST-PORT>/v2/public/<BUILDING-ID>/areas/<AREA-ID>/devices/identity?page=<PAGE-
NUMBER>&size=<RESULTS-PER-PAGE>&sort=<SORT-FIELD>,<SORT-ORDER>
```

Where:

- `<HOST-IP>` – IP address of the Trellix Lighting API server, and defaults to `192.168.2.100`
- `<HOST-PORT>` – IP port on the Trellix Lighting API server, optional and defaults to `443` for secure (https) connections
- `<TOKEN-TYPE>` – Type of authentication token (always `bearer`)
- `<ACCESS-TOKEN>` – Trellix Lighting API token returned in a Get Public Login Token request
- `<BUILDING-ID>` – Case-sensitive ID of the building to which the target area belongs
- `<AREA-ID>` – Case-sensitive ID of the area to which the endpoints are assigned
- `<PAGE-NUMBER>` – Page number to be returned
- `<RESULTS-PER-PAGE>` – Results per page, maximum size is `100`
- `<SORT-FIELD>` – Value by which to sort the listed areas (always `name`)
- `<SORT-ORDER>` – Sort order (always `ASC`)

**GET Request Example**

```
https://192.168.2.100/v2/public/C1B1/areas/A1/devices/identity?page=1&size=10&sort=name,ASC
```

**JSON Body Example**

```
{
  "content": [
    { DEVICE_OBJECT_PROPERTIES },
    { DEVICE_OBJECT_PROPERTIES }
  ],
  "last": true,
  "totalPages": 1,
  "totalElements": 2,
  "numberOfElements": 2,
  "first": true,
  "sort": [
    {
      "direction": "ASC",
      "property": "name",
      "ignoreCase": false,
      "nullHandling": "NATIVE",
      "descending": false,
      "ascending": true
    }
  ],
  "size": 10,
  "number": 0
}
```

Using `ro` as the ascending Devices List JSON response object in the example above, the relevant values are described below. See the [Common Response Properties](#) for descriptions of the standard list properties.

**NOTE**

Some nested object properties above have been replaced with uppercase labels (`ABC_OBJECT_PROPERTIES`) for simplicity.

Property	Value	Description
<code>ro.content</code>	Array	Zero or more device objects containing the <code>name</code> and <code>publicID</code> properties. See <a href="#">Device Display View</a> for more information.

**All Devices List in Descending Order**

Returns an identity list of all devices in a specified area, sorted in descending order by name.

**HTTP Header Fields**

```
GET /v2/public/<BUILDING-ID>/areas/<AREA-ID>/devices/identity?page=<PAGE-NUMBER>&size=<RESULTS-PER-PAGE>&sort=<SORT-FIELD>,<SORT-ORDER> HTTP/1.1
Authorization: <TOKEN-TYPE> <ACCESS-TOKEN>
Content-Type: application/json
Cache-Control: no-cache
```

**GET Request Structure**

```
https://<HOST-IP>:<HOST-PORT>/v2/public/<BUILDING-ID>/areas/<AREA-ID>/devices/identity?page=<PAGE-NUMBER>&size=<RESULTS-PER-PAGE>&sort=<SORT-FIELD>,<SORT-ORDER>
```

**Where:**

- `<HOST-IP>` – IP address of the Trellix Lighting API server, and defaults to `192.168.2.100`
- `<HOST-PORT>` – IP port on the Trellix Lighting API server, optional and defaults to `443` for secure (https) connections
- `<TOKEN-TYPE>` – Type of authentication token (always `bearer`)
- `<ACCESS-TOKEN>` – Trellix Lighting API token returned in a Get Public Login Token request
- `<BUILDING-ID>` – Case-sensitive ID of the building to which the target area belongs
- `<AREA-ID>` – Case-sensitive ID of the area to which the endpoints are assigned
- `<PAGE-NUMBER>` – Page number to be returned
- `<RESULTS-PER-PAGE>` – Results per page, maximum size is `100`
- `<SORT-FIELD>` – Value by which to sort the listed areas (always `name`)
- `<SORT-ORDER>` – Sort order (always `DESC`)

**GET Request Example**

```
https://192.168.2.100/v2/public/C1B1/areas/A1/devices/identity?page=1&size=10&sort=name,DESC
```

**JSON Body Example**

```
{
  "content": [
    { DEVICE_OBJECT_PROPERTIES },
    { DEVICE_OBJECT_PROPERTIES }
  ],
  "last": true,
  "totalPages": 1,
  "totalElements": 6,
  "numberOfElements": 6,
  "first": true,
  "sort": [
    {
      "direction": "DESC",
      "property": "name",
      "ignoreCase": false,
      "nullHandling": "NATIVE",
      "descending": true,
      "ascending": false
    }
  ],
  "size": 10,
  "number": 0
}
```

Using `ro` as the descending Devices List JSON response object in the example above, the relevant values are described below. See the [Common Response Properties](#) for descriptions of the standard list properties.

**NOTE**

Some nested object properties above have been replaced with uppercase labels (`ABC_OBJECT_PROPERTIES`) for simplicity.

Property	Value	Description
<code>ro.content</code>	Array	Zero or more device objects. See <a href="#">Device Display View</a> for more information.

**2.4 – Area Scene Calls**

The Area Scene API calls are used to discover the area scenes configured for all areas or only those within a specific area.

**2.4.1 – Requests for a Specific Scene in One Area**

This section describes API calls that provide various ways to view a list of scenes in a single area on the network.

**Area Scene Detail View**

Returns a detail view of a scene in a specified area.

**HTTP Header Fields**

```
GET /v2/public/<BUILDING-ID>/areas/<AREA-ID>/scenes/<SCENE-ID>/detail HTTP/1.1
Authorization: <TOKEN-TYPE> <ACCESS-TOKEN>
Content-Type: application/json
Cache-Control: no-cache
```

**GET Request Structure**

```
https://<HOST-IP>:<HOST-PORT>/v2/public/<BUILDING-ID>/areas/<AREA-ID>/scenes/<SCENE-ID>/detail
```

Where:

- `<HOST-IP>` – IP address of the Trellix Lighting API server, and defaults to `192.168.2.100`
- `<HOST-PORT>` – IP port on the Trellix Lighting API server, optional and defaults to `443` for secure (https) connections
- `<TOKEN-TYPE>` – Type of authentication token (always `bearer`)
- `<ACCESS-TOKEN>` – Trellix Lighting API token returned in a Get Public Login Token request
- `<BUILDING-ID>` – Case-sensitive ID of the building to which the target area belongs
- `<AREA-ID>` – Case-sensitive ID of the area to which the scene is assigned
- `<SCENE-ID>` – Case-sensitive ID of the requested scene

**GET Request Example**

```
https://192.168.2.100/v2/public/C1B1/areas/A1/scenes/S1/detail
```

**JSON Body Example**

```
{
  "updatedAt": "2018-06-05T16:18:36.987-0400",
  "createdAt": "2018-06-05T16:18:36.974-0400",
  "id": 7,
  "areaId": "e9432fea-ca14-11e7-bcea-001d054d15d2",
  "scenePublicId": "S49",
  "areaPublicId": "A1",
  "name": "Scene 6"
}
```

Using `ro` as the Area Scene Detail JSON response object in the example above, the relevant values are described below. See the [Common Response Properties](#) for descriptions of the standard list properties.

Property	Value	Description
<code>ro.updatedTime</code>	2018-06-05T16:18:36.987-0400	The date and time when this scene was last updated (Date).
<code>ro.createdTime</code>	2018-06-05T16:18:36.974-0400	The date and time when this scene was created (Date).
<code>ro.id</code>	7	The internal ID of this scene (Number).
<code>ro.areaId</code>	e9432fea-ca14[...]	The internal ID of the area to which this scene belongs.
<code>ro.scenePublicId</code>	S49	The public ID of this scene.
<code>ro.areaPublicId</code>	A1	The public ID of the area to which this scene belongs.
<code>ro.name</code>	Scene 6	The name of this scene.

## Area Scene Display View

Returns a display view of a scenes in a specified area.

### HTTP Header Fields

```
GET /v2/public/<BUILDING-ID>/areas/<AREA-ID>/scenes/<SCENE-ID>/display HTTP/1.1
Authorization: <TOKEN-TYPE> <ACCESS-TOKEN>
Content-Type: application/json
Cache-Control: no-cache
```

### GET Request Structure

```
https://<HOST-IP>:<HOST-PORT>/v2/public/<BUILDING-ID>/areas/<AREA-ID>/scenes/<SCENE-ID>/display
```

Where:

- **<HOST-IP>** – IP address of the Trellix Lighting API server, and defaults to 192.168.2.100
- **<HOST-PORT>** – IP port on the Trellix Lighting API server, optional and defaults to 443 for secure (https) connections
- **<TOKEN-TYPE>** – Type of authentication token (always `bearer`)
- **<ACCESS-TOKEN>** – Trellix Lighting API token returned in a Get Public Login Token request
- **<BUILDING-ID>** – Case-sensitive ID of the building to which the target area belongs
- **<AREA-ID>** – Case-sensitive ID of the area to which the scene is assigned
- **<SCENE-ID>** – Case-sensitive ID of the requested scene

### GET Request Example

```
https://192.168.2.100/v2/public/C1B1/areas/A1/scenes/S1/display
```

### JSON Body Example

```
{
  "updatedAt": "2018-06-05T16:18:36.987-0400",
  "createdAt": "2018-06-05T16:18:36.974-0400",
  "id": 7,
  "areaId": "e9432fea-ca14-11e7-bcea-001d054d15d2",
  "scenePublicId": "S49",
  "areaPublicId": "A1",
  "name": "Scene 6"
}
```

Using `ro` as the Area Scene Display JSON response object in the example above, the relevant values are described below. See the [Common Response Properties](#) for descriptions of the standard list properties.

Property	Value	Description
<code>ro.updatedTime</code>	2018-06-05T16:18:36.987-0400	The date and time when this scene was last updated (Date).
<code>ro.createdTime</code>	2018-06-05T16:18:36.974-0400	The date and time when this scene was created (Date).
<code>ro.id</code>	7	The internal ID of this scene (Number).
<code>ro.areaId</code>	e9432fea-ca14[...]	The internal ID of the area to which this scene belongs.
<code>ro.scenePublicId</code>	S49	The public ID of this scene.
<code>ro.areaPublicId</code>	A1	The public ID of the area to which this scene belongs.
<code>ro.name</code>	Scene 6	The name of this scene.

## Area Scene Identity View

Returns an identity list of all scenes in a specified area.

### HTTP Header Fields

```
GET /v2/public/<BUILDING-ID>/areas/<AREA-ID>/scenes/<SCENE-ID>/identity HTTP/1.1
Authorization: <TOKEN-TYPE> <ACCESS-TOKEN>
Content-Type: application/json
Cache-Control: no-cache
```

### GET Request Structure

```
https://<HOST-IP>:<HOST-PORT>/v2/public/<BUILDING-ID>/areas/<AREA-ID>/scenes/<SCENE-ID>/identity
```

Where:

- **<HOST-IP>** – IP address of the Trellix Lighting API server, and defaults to 192.168.2.100
- **<HOST-PORT>** – IP port on the Trellix Lighting API server, optional and defaults to 443 for secure (https) connections

- <TOKEN-TYPE> – Type of authentication token (always `bearer`)
- <ACCESS-TOKEN> – Trellix Lighting API token returned in a Get Public Login Token request
- <BUILDING-ID> – Case-sensitive ID of the building to which the target area belongs
- <AREA-ID> – Case-sensitive ID of the area to which the scene is assigned
- <SCENE-ID> – Case-sensitive ID of the requested scene

#### GET Request Example

```
https://192.168.2.100/v2/public/C1B1/areas/A1/scenes/S1/identity
```

#### JSON Body Example

```
{
  "updatedAt": "2018-06-05T16:18:36.987-0400",
  "createdAt": "2018-06-05T16:18:36.974-0400",
  "id": 7,
  "areaId": "e9432fea-ca14-11e7-bcea-001d054d15d2",
  "scenePublicId": "S49",
  "areaPublicId": "A1",
  "name": "Scene 6"
}
```

Using `ro` as the Area Identity Detail JSON response object in the example above, the relevant values are described below. See the [Common Response Properties](#) for descriptions of the standard list properties.

Property	Value	Description
<code>ro.updatedTime</code>	2018-06-05T16:18:36.987-0400	The date and time when this scene was last updated (Date).
<code>ro.createdTime</code>	2018-06-05T16:18:36.974-0400	The date and time when this scene was created (Date).
<code>ro.id</code>	7	The internal ID of this scene (Number).
<code>ro.areaId</code>	e9432fea-ca14[...]	The internal ID of the area to which this scene belongs.
<code>ro.scenePublicId</code>	S49	The public ID of this scene.
<code>ro.areaPublicId</code>	A1	The public ID of the area to which this scene belongs.
<code>ro.name</code>	Scene 6	The name of this scene.

### 2.4.2 – Requests for All Scenes in One Area

This section describes API calls that provide various ways to view a list of areas scenes on the network.

#### All Scenes Detail List

Return a detail list of all scenes in a specified area.

#### HTTP Header Fields

```
GET /v2/public/<BUILDING-ID>/areas/<AREA-ID>/scenes/detail HTTP/1.1
Authorization: <TOKEN-TYPE> <ACCESS-TOKEN>
Content-Type: application/json
Cache-Control: no-cache
```

#### GET Request Structure

```
https://<HOST-IP>:<HOST-PORT>/v2/public/<BUILDING-ID>/areas/<AREA-ID>/scenes/detail
```

Where:

- <HOST-IP> – IP address of the Trellix Lighting API server, and defaults to `192.168.2.100`
- <HOST-PORT> – IP port on the Trellix Lighting API server, optional and defaults to `443` for secure (https) connections
- <TOKEN-TYPE> – Type of authentication token (always `bearer`)
- <ACCESS-TOKEN> – Trellix Lighting API token returned in a Get Public Login Token request
- <BUILDING-ID> – ID of the building to which the target area belongs
- <AREA-ID> is the ID of the area to which the scenes belong

#### GET Request Example

```
https://192.168.2.100/v2/public/C1B1/areas/A1/scenes/detail
```

#### JSON Body Example

```
{
  "content": [
    { SCENE_OBJECT_PROPERTIES },
  ]
}
```



```

    { SCENE_OBJECT_PROPERTIES }
  ],
  "last": true,
  "totalPages": 1,
  "totalElements": 2,
  "numberOfElements": 2,
  "first": true,
  "size": 100,
  "number": 0
}

```

Using `ro` as the All Area Scenes Detail List JSON response object in the example above, the relevant values are described below. See the [Common Response Properties](#) for descriptions of the standard list properties.

**NOTE**

Some nested object properties above have been replaced with uppercase labels (`ABC_OBJECT_PROPERTIES`) for simplicity.

Property	Value	Description
<code>ro.content</code>	Array	Zero or more scene objects. See <a href="#">Area Scene Detail View</a> for more information.

**All Scenes Display List**

Return a display list of all scenes in a specified area.

**HTTP Header Fields**

```

GET /v2/public/<BUILDING-ID>/areas/<AREA-ID>/scenes/display HTTP/1.1
Authorization: <TOKEN-TYPE> <ACCESS-TOKEN>
Content-Type: application/json
Cache-Control: no-cache

```

**GET Request Structure**

```
https://<HOST-IP>:<HOST-PORT>/v2/public/<BUILDING-ID>/areas/<AREA-ID>/scenes/display
```

Where:

- `<HOST-IP>` – IP address of the Trellix Lighting API server, and defaults to `192.168.2.100`
- `<HOST-PORT>` – IP port on the Trellix Lighting API server, optional and defaults to `443` for secure (https) connections
- `<TOKEN-TYPE>` – Type of authentication token (always `bearer`)
- `<ACCESS-TOKEN>` – Trellix Lighting API token returned in a Get Public Login Token request
- `<BUILDING-ID>` – ID of the building to which the target area belongs
- `<AREA-ID>` is the ID of the area to which the scenes belong

**GET Request Example**

```
https://192.168.2.100/v2/public/C1B1/areas/A1/scenes/display
```

**JSON Body Example**

```

{
  "content": [
    { SCENE_OBJECT_PROPERTIES },
    { SCENE_OBJECT_PROPERTIES }
  ],
  "last": true,
  "totalPages": 1,
  "totalElements": 2,
  "numberOfElements": 2,
  "first": true,
  "size": 100,
  "number": 0
}

```

Using `ro` as the All Area Scenes Display List JSON response object in the example above, the relevant values are described below. See the [Common Response Properties](#) for descriptions of the standard list properties.

**NOTE**

Some nested object properties above have been replaced with uppercase labels (`ABC_OBJECT_PROPERTIES`) for simplicity.

Property	Value	Description
<code>ro.content</code>	Array	Zero or more scene objects. See <a href="#">Area Scene Display View</a> for more information.

## All Scenes Identity List

Return an identity list of all scenes in a specified area.

### HTTP Header Fields

```
GET /v2/public/<BUILDING-ID>/areas/<AREA-ID>/scenes/identity HTTP/1.1
Authorization: <TOKEN-TYPE> <ACCESS-TOKEN>
Content-Type: application/json
Cache-Control: no-cache
```

### GET Request Structure

```
https://<HOST-IP>:<HOST-PORT>/v2/public/<BUILDING-ID>/areas/<AREA-ID>/scenes/identity
```

Where:

- **<HOST-IP>** – IP address of the Trellix Lighting API server, and defaults to 192.168.2.100
- **<HOST-PORT>** – IP port on the Trellix Lighting API server, optional and defaults to 443 for secure (https) connections
- **<TOKEN-TYPE>** – Type of authentication token (always `bearer`)
- **<ACCESS-TOKEN>** – Trellix Lighting API token returned in a Get Public Login Token request
- **<BUILDING-ID>** – ID of the building to which the target area belongs
- **<AREA-ID>** is the ID of the area to which the scenes belong

### GET Request Example

```
https://192.168.2.100/v2/public/C1B1/areas/A1/scenes/identity
```

### JSON Body Example

```
{
  "content": [
    { SCENE_OBJECT_PROPERTIES },
    { SCENE_OBJECT_PROPERTIES }
  ],
  "last": true,
  "totalPages": 1,
  "totalElements": 7,
  "numberOfElements": 7,
  "first": true,
  "size": 100,
  "number": 0
}
```

Using `ro` as the All Area Scenes Identity List JSON response object in the example above, the relevant values are described below. See the [Common Response Properties](#) for descriptions of the standard list properties.

#### NOTE

Some nested object properties above have been replaced with uppercase labels (`ABC_OBJECT_PROPERTIES`) for simplicity.

Property	Value	Description
<code>ro.content</code>	Array	Zero or more scene objects. See <a href="#">Area Scene Identity View</a> for more information.

## All Scenes List in Ascending Order

Return an identity list of all scenes in a specified area, sorted in ascending order by name.

### HTTP Header Fields

```
GET /v2/public/<BUILDING-ID>/areas/<AREA-ID>/scenes/identity?page=<PAGE-NUMBER>&size=<RESULTS-PER-PAGE>&sort=<SORT-FIELD>,<SORT-ORDER> HTTP/1.1
Authorization: bearer <PUBLIC-API-AUTH-TOKEN>
Content-Type: application/json
Cache-Control: no-cache
```

### GET Request Structure

```
https://<HOST-IP>:<HOST-PORT>/v2/public/<BUILDING-ID>/areas/<AREA-ID>/scenes/identity?page=<PAGE-NUMBER>&size=<RESULTS-PER-PAGE>&sort=<SORT-FIELD>,<SORT-ORDER>
```

Where:

- **<HOST-IP>** – IP address of the Trellix Lighting API server, and defaults to 192.168.2.100
- **<HOST-PORT>** – IP port on the Trellix Lighting API server, optional and defaults to 443 for secure (https) connections

- `<BUILDING-ID>` – Case-sensitive ID of the building to which the requested area belongs
- `<AREA-ID>` is the ID of the area to which the scenes belong
- `<PAGE-NUMBER>` – Page number to be returned
- `<RESULTS-PER-PAGE>` – Results per page, maximum size is 100
- `<SORT-FIELD>` – Value by which to sort the listed areas
- `<SORT-ORDER>` – Sort order (always `ASC`)

### GET Request Example

```
https://192.168.2.100/v2/public/C1B1/areas/identity?page=1&size=10&sort=name,ASC
```

### JSON Body Example

```
{
  "content": [
    { SCENE_OBJECT_PROPERTIES },
    { SCENE_OBJECT_PROPERTIES }
  ],
  "last": true,
  "totalPages": 1,
  "totalElements": 7,
  "numberOfElements": 7,
  "first": true,
  "sort": [
    {
      "direction": "ASC",
      "property": "name",
      "ignoreCase": false,
      "nullHandling": "NATIVE",
      "descending": false,
      "ascending": true
    }
  ]
},
"size": 10,
"number": 0
}
```

Using `ro` as the ascending Area Scenes List JSON response object in the example above, the relevant values are described below. See the [Common Response Properties](#) for descriptions of the standard list properties.

#### NOTE

Some nested object properties above have been replaced with uppercase labels (`ABC_OBJECT_PROPERTIES`) for simplicity.

Property	Value	Description
<code>ro.content</code>	Array	Zero or more scene objects. See <a href="#">Area Scene Identity View</a> for more information.

### All Scenes List in Descending Order

Return an identity list of all scenes in a specified area, sorted in descending order by name.

#### HTTP Header Fields

```
GET /v2/public/<BUILDING-ID>/areas/<AREA-ID>/scenes/identity?page=<PAGE-NUMBER>&size=<RESULTS-PER-PAGE>&sort=<SORT-FIELD>,<SORT-ORDER> HTTP/1.1
Authorization: bearer <PUBLIC-API-AUTH-TOKEN>
Content-Type: application/json
Cache-Control: no-cache
```

### GET Request Structure

```
https://<HOST-IP>:<HOST-PORT>/v2/public/<BUILDING-ID>/areas/<AREA-ID>/scenes/identity?page=<PAGE-NUMBER>&size=<RESULTS-PER-PAGE>&sort=<SORT-FIELD>,<SORT-ORDER>
```

#### Where:

- `<HOST-IP>` – IP address of the Trellix Lighting API server, and defaults to `192.168.2.100`
- `<HOST-PORT>` – IP port on the Trellix Lighting API server, optional and defaults to `443` for secure (https) connections
- `<BUILDING-ID>` – Case-sensitive ID of the building to which the requested area belongs
- `<AREA-ID>` is the ID of the area to which the scenes belong
- `<PAGE-NUMBER>` – Page number to be returned
- `<RESULTS-PER-PAGE>` – Results per page, maximum size is 100
- `<SORT-FIELD>` – Value by which to sort the listed areas

- `<SORT-ORDER>` – Sort order (always `DESC`)

### GET Request Example

```
https://192.168.2.100/v2/public/C1B1/areas/identity?page=1&size=10&sort=name,DESC
```

### JSON Body Example

```
{
  "content": [
    { SCENE_OBJECT_PROPERTIES },
    { SCENE_OBJECT_PROPERTIES }
  ],
  "last": true,
  "totalPages": 1,
  "totalElements": 7,
  "numberOfElements": 7,
  "first": true,
  "sort": [
    {
      "direction": "DESC",
      "property": "name",
      "ignoreCase": false,
      "nullHandling": "NATIVE",
      "descending": true,
      "ascending": false
    }
  ],
  "size": 10,
  "number": 0
}
```

Using `ro` as the descending Area Scenes List JSON response object in the example above, the relevant values are described below. See the [Common Response Properties](#) for descriptions of the standard list properties.

#### NOTE

Some nested object properties above have been replaced with uppercase labels (`ABC_OBJECT_PROPERTIES`) for simplicity.

Property	Value	Description
<code>ro.content</code>	Array	Zero or more scene objects. See <a href="#">Area Scene Identity View</a> for more information.

## 2.5 – Zone Calls

The Zone API calls are used to discover the zones configured for an area, or to get information about a specific zone.

### 2.5.1 – Requests for All Zones in One Area

This section describes API calls that provide various ways to view a list of zones in a specific area.

#### All Zones Detail List

Return a detail list of all zones in a specified area.

#### HTTP Header Fields

```
GET /v2/public/<BUILDING-ID>/areas/<AREA-ID>/zones/detail HTTP/1.1
Authorization: <TOKEN-TYPE> <ACCESS-TOKEN>
Content-Type: application/json
Cache-Control: no-cache
```

#### GET Request Structure

```
https://<HOST-IP>:<HOST-PORT>/v2/public/<BUILDING-ID>/zones/<AREA-ID>/zones/detail
```

Where:

- `<HOST-IP>` – IP address of the Trellix Lighting API server, and defaults to `192.168.2.100`
- `<HOST-PORT>` – IP port on the Trellix Lighting API server, optional and defaults to `443` for secure (https) connections
- `<TOKEN-TYPE>` – Type of authentication token (always `bearer`)
- `<ACCESS-TOKEN>` – Trellix Lighting API token returned in a Get Public Login Token request
- `<BUILDING-ID>` – ID of the building to which the target area belongs
- `<AREA-ID>` is the ID of the area to which the scenes belong

## GET Request Example

```
https://192.168.2.100/v2/public/C1B1/areas/A1/zones/detail
```

## JSON Body Example

```
{
  "content": [
    { ZONE_OBJECT_PROPERTIES },
    { ZONE_OBJECT_PROPERTIES }
  ],
  "last": true,
  "totalPages": 1,
  "totalElements": 2,
  "numberOfElements": 2,
  "first": true,
  "size": 100,
  "number": 0
}
```

Using `ro` as the All Zones Detail List JSON response object in the example above, the relevant values are described below. See the [Common Response Properties](#) for descriptions of the standard list properties.

### NOTE

Some nested object properties above have been replaced with uppercase labels (`ABC_OBJECT_PROPERTIES`) for simplicity.

Property	Value	Description
<code>ro.content</code>	Array	Zero or more zone objects. See <a href="#">Area Zone Detail View</a> for more information.

## All Zones Display List

Return a display list of all zones in a specified area.

### HTTP Header Fields

```
GET /v2/public/<BUILDING-ID>/areas/<AREA-ID>/zones/display HTTP/1.1
Authorization: <TOKEN-TYPE> <ACCESS-TOKEN>
Content-Type: application/json
Cache-Control: no-cache
```

## GET Request Structure

```
https://<HOST-IP>:<HOST-PORT>/v2/public/<BUILDING-ID>/areas/<AREA-ID>/zones/display
```

Where:

- `<HOST-IP>` – IP address of the Trellix Lighting API server, and defaults to `192.168.2.100`
- `<HOST-PORT>` – IP port on the Trellix Lighting API server, optional and defaults to `443` for secure (https) connections
- `<TOKEN-TYPE>` – Type of authentication token (always `bearer`)
- `<ACCESS-TOKEN>` – Trellix Lighting API token returned in a Get Public Login Token request
- `<BUILDING-ID>` – ID of the building to which the target area belongs
- `<AREA-ID>` – ID of the area to which the scenes belong

## GET Request Example

```
https://192.168.2.100/v2/public/C1B1/areas/A1/zones/display
```

## JSON Body Example

```
{
  "content": [
    { ZONE_OBJECT_PROPERTIES },
    { ZONE_OBJECT_PROPERTIES }
  ],
  "last": true,
  "totalPages": 1,
  "totalElements": 2,
  "numberOfElements": 2,
  "first": true,
  "size": 100,
  "number": 0
}
```

Using `ro` as the All Zones Display List JSON response object in the example above, the relevant values are described below. See the [Common Response Properties](#) for descriptions of the standard list properties.

**NOTE**

Some nested object properties above have been replaced with uppercase labels (`ABC_OBJECT_PROPERTIES`) for simplicity.

Property	Value	Description
<code>ro.content</code>	Array	Zero or more zone objects. See <a href="#">Area Zone Display View</a> for more information.

**All Zones Identity List**

Return an identity list of all zones in a specified area.

**HTTP Header Fields**

```
GET /v2/public/<BUILDING-ID>/areas/<AREA-ID>/zones/identity HTTP/1.1
Authorization: <TOKEN-TYPE> <ACCESS-TOKEN>
Content-Type: application/json
Cache-Control: no-cache
```

**GET Request Structure**

```
https://<HOST-IP>:<HOST-PORT>/v2/public/<BUILDING-ID>/areas/<AREA-ID>/zones/identity
```

Where:

- `<HOST-IP>` – IP address of the Trellix Lighting API server, and defaults to 192.168.2.100
- `<HOST-PORT>` – IP port on the Trellix Lighting API server, optional and defaults to 443 for secure (https) connections
- `<TOKEN-TYPE>` – Type of authentication token (always `bearer`).
- `<ACCESS-TOKEN>` – Trellix Lighting API token returned in a Get Public Login Token request.
- `<BUILDING-ID>` – ID of the building to which the target area belongs.
- `<AREA-ID>` – ID of the area to which the scenes belong.

**GET Request Example**

```
https://192.168.2.100/v2/public/C1B1/areas/A1/zones/identity
```

**JSON Body Example**

```
{
  "content": [
    { ZONE_OBJECT_PROPERTIES },
    { ZONE_OBJECT_PROPERTIES }
  ],
  "last": true,
  "totalPages": 1,
  "totalElements": 2,
  "numberOfElements": 2,
  "first": true,
  "size": 100,
  "number": 0
}
```

Using `ro` as the All Zones Identity List JSON response object in the example above, the relevant values are described below. See the [Common Response Properties](#) for descriptions of the standard list properties.

**NOTE**

Some nested object properties above have been replaced with uppercase labels (`ABC_OBJECT_PROPERTIES`) for simplicity.

Property	Value	Description
<code>ro.content</code>	Array	Zero or more zone objects. See <a href="#">Area Zone Identity View</a> for more information.

**All Zones List in Ascending Order**

Return an identity list of all zones in a specified area, sorted in ascending order by name.

**HTTP Header Fields**

```
GET /v2/public/<BUILDING-ID>/areas/<AREA-ID>/zones/identity?page=<PAGE-NUMBER>&size=<RESULTS-PER-PAGE>&sort=<SORT-FIELD>,<SORT-ORDER> HTTP/1.1
Authorization: bearer <PUBLIC-API-AUTH-TOKEN>
Content-Type: application/json
Cache-Control: no-cache
```

## GET Request Structure

```
https://<HOST-IP>:<HOST-PORT>/v2/public/<BUILDING-ID>/areas/<AREA-ID>/zones/identity?page=<PAGE-NUMBER>&size=<RESULTS-PER-PAGE>&sort=<SORT-FIELD>,<SORT-ORDER>
```

### Where:

- **<HOST-IP>** – IP address of the Trellix Lighting API server, and defaults to 192.168.2.100
- **<HOST-PORT>** – IP port on the Trellix Lighting API server, optional and defaults to 443 for secure (https) connections
- **<BUILDING-ID>** – Case-sensitive ID of the building to which the requested area belongs
- **<AREA-ID>** is the ID of the area to which the scenes belong
- **<PAGE-NUMBER>** – Page number to be returned
- **<RESULTS-PER-PAGE>** – Results per page, maximum size is 100
- **<SORT-FIELD>** – Value by which to sort the listed areas
- **<SORT-ORDER>** – Sort order (always `ASC`)

## GET Request Example

```
https://192.168.2.100/v2/public/C1B1/zones/identity?page=1&size=10&sort=name,ASC
```

## JSON Body Example

```
{
  "content": [
    { ZONE_OBJECT_PROPERTIES },
    { ZONE_OBJECT_PROPERTIES }
  ],
  "last": true,
  "totalPages": 1,
  "totalElements": 2,
  "numberOfElements": 2,
  "first": true,
  "sort": [
    {
      "direction": "ASC",
      "property": "name",
      "ignoreCase": false,
      "nullHandling": "NATIVE",
      "descending": false,
      "ascending": true
    }
  ],
  "size": 10,
  "number": 0
}
```

Discontinued  
06-02-2023

Using `ro` as the ascending All Zones List JSON response object in the example above, the relevant values are described below. See the [Common Response Properties](#) for descriptions of the standard list properties.

### NOTE

Some nested object properties above have been replaced with uppercase labels (`ABC_OBJECT_PROPERTIES`) for simplicity.

Property	Value	Description
<code>ro.content</code>	Array	Zero or more zone objects. See <a href="#">Area Zone Identity View</a> for more information.

## All Zones List in Descending Order

Return an identity list of all zones in a specified area, sorted in descending order by name.

### HTTP Header Fields

```
GET /v2/public/<BUILDING-ID>/areas/<AREA-ID>/zones/identity?page=<PAGE-NUMBER>&size=<RESULTS-PER-PAGE>&sort=<SORT-FIELD>,<SORT-ORDER> HTTP/1.1
Authorization: bearer <PUBLIC-API-AUTH-TOKEN>
Content-Type: application/json
Cache-Control: no-cache
```

## GET Request Structure

```
https://<HOST-IP>:<HOST-PORT>/v2/public/<BUILDING-ID>/areas/<AREA-ID>/zones/identity?page=<PAGE-NUMBER>&size=<RESULTS-PER-PAGE>&sort=<SORT-FIELD>,<SORT-ORDER>
```

### Where:

- `<HOST-IP>` – IP address of the Trellix Lighting API server, and defaults to 192.168.2.100
- `<HOST-PORT>` – IP port on the Trellix Lighting API server, optional and defaults to 443 for secure (https) connections
- `<BUILDING-ID>` – Case-sensitive ID of the building to which the requested area belongs
- `<AREA-ID>` is the ID of the area to which the scenes belong
- `<PAGE-NUMBER>` – Page number to be returned
- `<RESULTS-PER-PAGE>` – Results per page, maximum size is 100
- `<SORT-FIELD>` – Value by which to sort the listed areas
- `<SORT-ORDER>` – Sort order (always `DESC`)

### GET Request Example

```
https://192.168.2.100/v2/public/C1B1/areas/zones?page=1&size=10&sort=name,DESC
```

### JSON Body Example

```
{
  "content": [
    { ZONE_OBJECT_PROPERTIES },
    { ZONE_OBJECT_PROPERTIES }
  ],
  "last": true,
  "totalPages": 1,
  "totalElements": 2,
  "numberOfElements": 2,
  "first": true,
  "sort": [
    {
      "direction": "DESC",
      "property": "name",
      "ignoreCase": false,
      "nullHandling": "NATIVE",
      "descending": true,
      "ascending": false
    }
  ],
  "size": 10,
  "number": 0
}
```

Using `ro` as the descending All Zones List JSON response object in the example above, the relevant values are described below. See the [Common Response Properties](#) for descriptions of the standard list properties.

#### NOTE

Some nested object properties above have been replaced with uppercase labels (`ABC_OBJECT_PROPERTIES`) for simplicity.

Property	Value	Description
<code>ro.content</code>	Array	Zero or more zone objects. See <a href="#">Area Zone Identity View</a> for more information.

## 2.5.2 – Requests for a Specific Zone in One Area

This section describes API calls that provide various ways to view data for a single zone in a specific area.

### Area Zone Detail View

Returns a detail view of one zone in a specified area.

#### HTTP Header Fields

```
GET /v2/public/<BUILDING-ID>/areas/<AREA-ID>/zones/<ZONE-ID>/detail HTTP/1.1
Authorization: <TOKEN-TYPE> <ACCESS-TOKEN>
Content-Type: application/json
Cache-Control: no-cache
```

### GET Request Structure

```
https://<HOST-IP>:<HOST-PORT>/v2/public/<BUILDING-ID>/areas/<AREA-ID>/zones/<ZONE-ID>/detail
```

Where:

- `<HOST-IP>` – IP address of the Trellix Lighting API server, and defaults to 192.168.2.100
- `<HOST-PORT>` – IP port on the Trellix Lighting API server, optional and defaults to 443 for secure (https) connections
- `<TOKEN-TYPE>` – Type of authentication token (always `bearer`)



- `<ACCESS-TOKEN>` – Trellix Lighting API token returned in a Get Public Login Token request
- `<BUILDING-ID>` – Case-sensitive ID of the building to which the target area belongs
- `<AREA-ID>` – Case-sensitive ID of the area to which the zone is assigned
- `<ZONE-ID>` – Case-sensitive ID of the requested zone

### GET Request Example

```
https://192.168.2.100/v2/public/C1B1/areas/A1/zones/Z1/detail
```

### JSON Body Example

```
{
  "updatedAt": "2018-06-05T16:24:07.639-0400",
  "createdAt": "2018-06-05T16:18:36.759-0400",
  "publicId": "Z1",
  "name": "Dimmable",
  "type": "3454641e-f73e-4517-8197-9084ec31d5e6",
  "zoneStatus": "UNKNOWN",
  "occupancySet": {
    OCCUPANCY_SET_OBJECT_PROPERTIES
  },
  "zoneDecorators": [
    {
      "name": "dimmableLight",
      "operationMode": "FOFO"
    }
  ],
  "isReachable": false,
  "isPartOfDemandResponse": true
}
```

Using `ro` as the Area Zones Detail JSON response object in the example above, the relevant values are described below. See the [Common Response Properties](#) for descriptions of the standard list properties.

#### NOTE

Some nested object properties above have been replaced with uppercase labels (`ABC_OBJECT_PROPERTIES`) for simplicity.

Property	Value	Description
<code>ro.publicId</code>	A1	The ID of this zone (string).
<code>ro.name</code>	Dimmable	The name of this zone (string).
<code>ro.zoneStatus</code>	UNKNOWN	The status of this zone (string).
<code>ro.occupancySet</code>	Array	The occupancy set object for this zone. See <a href="#">Occupancy Set Detail View</a> for more information.
<code>ro.zoneDecorators</code>	Array	Selected data for zero or more zone decorator objects.
<code>ro.isReachable</code>	false	Whether this zone is reachable (boolean).
<code>ro.isPartOfDemandResponse</code>	false	Whether this zone is part of the demand response set (boolean).

### Area Zone Display View

Returns a display view of one zone in a specified area.

#### HTTP Header Fields

```
GET /v2/public/<BUILDING-ID>/areas/<AREA-ID>/zones/<ZONE-ID>/display HTTP/1.1
Authorization: <TOKEN-TYPE> <ACCESS-TOKEN>
Content-Type: application/json
Cache-Control: no-cache
```

### GET Request Structure

```
https://<HOST-IP>:<HOST-PORT>/v2/public/<BUILDING-ID>/areas/<AREA-ID>/zones/<ZONE-ID>/display
```

#### Where:

- `<HOST-IP>` – IP address of the Trellix Lighting API server, and defaults to 192.168.2.100
- `<HOST-PORT>` – IP port on the Trellix Lighting API server, optional and defaults to 443 for secure (https) connections
- `<TOKEN-TYPE>` – Type of authentication token (always `bearer`)
- `<ACCESS-TOKEN>` – Trellix Lighting API token returned in a Get Public Login Token request
- `<BUILDING-ID>` – Case-sensitive ID of the building to which the target area belongs

- <AREA-ID> – Case-sensitive ID of the area to which the zone is assigned
- <ZONE-ID> – Case-sensitive ID of the requested zone

### GET Request Example

```
https://192.168.2.100/v2/public/C1B1/areas/A1/zones/Z1/display
```

### JSON Body Example

```
{
  "updatedAt": "2018-06-05T16:24:07.639-0400",
  "publicId": "Z1",
  "name": "Dimmable",
  "type": "3454641e-f73e-4517-8197-9084ec31d5e6",
  "occupancySet": {
    OCCUPANCY_SET_OBJECT_PROPERTIES
  },
  "zoneDecorators": [
    {
      "name": "dimmableLight",
      "operationMode": "FOFO"
    }
  ],
  "isPartOfDemandResponse": true
}
```

Using `ro` as the Area Zones Display JSON response object in the example above, the relevant values are described below. See the [Common Response Properties](#) for descriptions of the standard list properties.

#### NOTE

Some nested object properties above have been replaced with uppercase labels (`ABC_OBJECT_PROPERTIES`) for simplicity.

Property	Value	Description
<code>ro.publicId</code>	A1	The ID of this zone (string).
<code>ro.name</code>	Dimmable	The name of this zone (string).
<code>ro.occupancySet</code>	Array	The occupancy set object for this zone. See <a href="#">Occupancy Set Detail View</a> for more information.
<code>ro.zoneDecorators</code>	Array	Selected data for zero or more zone decorator objects.
<code>ro.isPartOfDemandResponse</code>	false	Whether this zone is part of the demand response set (boolean).

### Area Zone Identity View

Returns an identity view of one zone in a specified area.

#### HTTP Header Fields

```
GET /v2/public/<BUILDING-ID>/areas/<AREA-ID>/zones/<ZONE-ID>/identity HTTP/1.1
Authorization: <TOKEN-TYPE> <ACCESS-TOKEN>
Content-Type: application/json
Cache-Control: no-cache
```

### GET Request Structure

```
https://<HOST-IP>:<HOST-PORT>/v2/public/<BUILDING-ID>/areas/<AREA-ID>/zones/<ZONE-ID>/identity
```

**Where:**

- `<HOST-IP>` – IP address of the Trellix Lighting API server, and defaults to 192.168.2.100
- `<HOST-PORT>` – IP port on the Trellix Lighting API server, optional and defaults to 443 for secure (https) connections
- `<TOKEN-TYPE>` – Type of authentication token (always `bearer`)
- `<ACCESS-TOKEN>` – Trellix Lighting API token returned in a Get Public Login Token request
- `<BUILDING-ID>` – Case-sensitive ID of the building to which the target area belongs
- `<AREA-ID>` – Case-sensitive ID of the area to which the zone is assigned
- `<ZONE-ID>` – Case-sensitive ID of the requested zone

**GET Request Example**

```
https://192.168.2.100/v2/public/C1B1/areas/A1/zones/Z1/identity
```

**JSON Body Example**

```
{
  "publicId": "Z1",
  "name": "Dimmable",
  "type": "3454641e-f73e-4517-8197-9084ec31d5e6"
}
```

Using `ro` as the Area Zones Identity JSON response object in the example above, the relevant values are described below. See the [Common Response Properties](#) for descriptions of the standard list properties.

**NOTE**

Some nested object properties above have been replaced with uppercase labels (`ABC_OBJECT_PROPERTIES`) for simplicity.

Property	Value	Description
<code>ro.publicId</code>	A1	The ID of this zone (string).
<code>ro.name</code>	Dimmable	The name of this zone (string).

**2.5.3 – Requests for All Devices in One Zone****All Devices Detail List**

Returns a detail list of all devices in one zone in a specified area.

**HTTP Header Fields**

```
GET /v2/public/<BUILDING-ID>/areas/<AREA-ID>/zones/<ZONE-ID>/devices/detail HTTP/1.1
Authorization: <TOKEN-TYPE> <ACCESS-TOKEN>
Content-Type: application/json
Cache-Control: no-cache
```

**GET Request Structure**

```
https://<HOST-IP>:<HOST-PORT>/v2/public/<BUILDING-ID>/areas/<AREA-ID>/zones/<ZONE-ID>/devices/detail
```

**Where:**

- `<HOST-IP>` – IP address of the Trellix Lighting API server, and defaults to 192.168.2.100
- `<HOST-PORT>` – IP port on the Trellix Lighting API server, optional and defaults to 443 for secure (https) connections
- `<TOKEN-TYPE>` – Type of authentication token (always `bearer`)
- `<ACCESS-TOKEN>` – Trellix Lighting API token returned in a Get Public Login Token request
- `<BUILDING-ID>` – Case-sensitive ID of the building to which the target area belongs
- `<AREA-ID>` – Case-sensitive ID of the area to which the zone belongs
- `<ZONE-ID>` – Case-sensitive ID of the zone to which the devices are assigned

**GET Request Example**

```
https://192.168.2.100/v2/public/C1B1/areas/A1/zones/Z1/devices/detail
```

**JSON Body Example**

```
{
  "content": [
    { DEVICE_OBJECT_PROPERTIES },
    { DEVICE_OBJECT_PROPERTIES }
  ],
  "last": true,
}
```

```

"totalPages": 1,
"totalElements": 6,
"numberOfElements": 6,
"first": true,
"size": 100,
"number": 0
}

```

Using `ro` as the All Devices Detail List JSON response object in the example above, the relevant values are described below. See the [Common Response Properties](#) for descriptions of the standard list properties.

**NOTE**

Some nested object properties above have been replaced with uppercase labels (`ABC_OBJECT_PROPERTIES`) for simplicity.

Property	Value	Description
<code>ro.content</code>	Array	Zero or more device objects. See <a href="#">Device Detail View</a> for more information.

**All Devices Display List**

Returns a display list of all devices in one zone in a specified area.

**HTTP Header Fields**

```

GET /v2/public/<BUILDING-ID>/areas/<AREA-ID>/zones/<ZONE-ID>/devices/display HTTP/1.1
Authorization: <TOKEN-TYPE> <ACCESS-TOKEN>
Content-Type: application/json
Cache-Control: no-cache

```

**GET Request Structure**

```

https://<HOST-IP>:<HOST-PORT>/v2/public/<BUILDING-ID>/areas/<AREA-ID>/zones/<ZONE-ID>/devices/display

```

**Where:**

- `<HOST-IP>` – IP address of the Trellix Lighting API server, and defaults to 192.168.2.100
- `<HOST-PORT>` – IP port on the Trellix Lighting API server, optional and defaults to 443 for secure (https) connections
- `<TOKEN-TYPE>` – Type of authentication token (always `bearer`)
- `<ACCESS-TOKEN>` – Trellix Lighting API token returned in a Get Public Login Token request
- `<BUILDING-ID>` – Case-sensitive ID of the building to which the target area belongs
- `<AREA-ID>` – Case-sensitive ID of the area to which the zone belongs
- `<ZONE-ID>` – Case-sensitive ID of the zone to which the devices are assigned

**GET Request Example**

```

https://192.168.2.100/v2/public/C1B1/areas/A1/zones/Z1/devices/display

```

**JSON Body Example**

```

{
  "content": [
    { DEVICE_OBJECT_PROPERTIES },
    { DEVICE_OBJECT_PROPERTIES }
  ],
  "last": true,
  "totalPages": 1,
  "totalElements": 6,
  "numberOfElements": 6,
  "first": true,
  "size": 100,
  "number": 0
}

```

Using `ro` as the All Devices Display List JSON response object in the example above, the relevant values are described below. See the [Common Response Properties](#) for descriptions of the standard list properties.

**NOTE**

Some nested object properties above have been replaced with uppercase labels (`ABC_OBJECT_PROPERTIES`) for simplicity.

Property	Value	Description
<code>ro.content</code>	Array	Zero or more device objects. See <a href="#">Device Display View</a> for more information.

**All Devices Identity List**

Returns an identity list of all devices in one zone in a specified area.

**HTTP Header Fields**

```
GET /v2/public/<BUILDING-ID>/areas/<AREA-ID>/zones/<ZONE-ID>/devices/identity HTTP/1.1
Authorization: <TOKEN-TYPE> <ACCESS-TOKEN>
Content-Type: application/json
Cache-Control: no-cache
```

**GET Request Structure**

```
https://<HOST-IP>:<HOST-PORT>/v2/public/<BUILDING-ID>/areas/<AREA-ID>/zones/<ZONE-ID>/devices/identity
```

**Where:**

- `<HOST-IP>` – IP address of the Trellix Lighting API server, and defaults to 192.168.2.100
- `<HOST-PORT>` – IP port on the Trellix Lighting API server, optional and defaults to 443 for secure (https) connections
- `<TOKEN-TYPE>` – Type of authentication token (always `bearer`)
- `<ACCESS-TOKEN>` – Trellix Lighting API token returned in a Get Public Login Token request
- `<BUILDING-ID>` – Case-sensitive ID of the building to which the target area belongs
- `<AREA-ID>` – Case-sensitive ID of the area to which the zone belongs
- `<ZONE-ID>` – Case-sensitive ID of the zone to which the devices are assigned

**GET Request Example**

```
https://192.168.2.100/v2/public/C1B1/areas/A1/zones/Z1/devices/identity
```

**JSON Body Example**

```
{
  "content": [
    { DEVICE_OBJECT_PROPERTIES },
    { DEVICE_OBJECT_PROPERTIES }
  ],
  "last": true,
  "totalPages": 1,
  "totalElements": 6,
  "numberOfElements": 6,
  "first": true,
  "size": 100,
  "number": 0
}
```

Using `ro` as the All Devices Identity List JSON response object in the example above, the relevant values are described below. See the [Common Response Properties](#) for descriptions of the standard list properties.

**NOTE**

Some nested object properties above have been replaced with uppercase labels (`ABC_OBJECT_PROPERTIES`) for simplicity.

Property	Value	Description
<code>ro.content</code>	Array	Zero or more device objects. See <a href="#">Device Identity View</a> for more information.

**All Devices List in Ascending Order**

Returns an identity list of all devices in one zone in a specified area, sorted in ascending order by name.>

## HTTP Header Fields

```
GET /v2/public/<BUILDING-ID>/areas/<AREA-ID>/zones/<ZONE-ID>/devices/identity?page=<PAGE-
NUMBER>&size=<RESULTS-PER-PAGE>&sort=<SORT-FIELD>,<SORT-ORDER> HTTP/1.1
Authorization: <TOKEN-TYPE> <ACCESS-TOKEN>
Content-Type: application/json
Cache-Control: no-cache
```

## GET Request Structure

```
https://<HOST-IP>:<HOST-PORT>/v2/public/<BUILDING-ID>/areas/<AREA-ID>/zones/<ZONE-
ID>/devices/identity?page=<PAGE-NUMBER>&size=<RESULTS-PER-PAGE>&sort=<SORT-FIELD>,<SORT-ORDER>
```

### Where:

- **<HOST-IP>** – IP address of the Trellix Lighting API server, and defaults to 192.168.2.100
- **<HOST-PORT>** – IP port on the Trellix Lighting API server, optional and defaults to 443 for secure (https) connections
- **<TOKEN-TYPE>** – Type of authentication token (always `bearer`)
- **<ACCESS-TOKEN>** – Trellix Lighting API token returned in a Get Public Login Token request
- **<BUILDING-ID>** – Case-sensitive ID of the building to which the target area belongs
- **<AREA-ID>** – Case-sensitive ID of the area to which the zone belongs
- **<ZONE-ID>** – Case-sensitive ID of the zone to which the devices are assigned
- **<PAGE-NUMBER>** – Page number to be returned
- **<RESULTS-PER-PAGE>** – Results per page, maximum size is 100
- **<SORT-FIELD>** – Value by which to sort the listed areas (always `name`)
- **<SORT-ORDER>** – Sort order (always `ASC`)

## GET Request Example

```
https://192.168.2.100/v2/public/C1B1/areas/A1/zones/Z1/devices/identity?page=1&size=10&sort=name,ASC
```

## JSON Body Example

```
{
  "content": [
    { DEVICE_OBJECT_PROPERTIES },
    { DEVICE_OBJECT_PROPERTIES }
  ],
  "last": true,
  "totalPages": 1,
  "totalElements": 6,
  "numberOfElements": 6,
  "first": true,
  "sort": [
    {
      "direction": "ASC",
      "property": "name",
      "ignoreCase": false,
      "nullHandling": "NATIVE",
      "descending": false,
      "ascending": true
    }
  ],
  "size": 10,
  "number": 0
}
```

Using `ro` as the ascending All Devices List JSON response object in the example above, the relevant values are described below. See the [Common Response Properties](#) for descriptions of the standard list properties.

### NOTE

Some nested object properties above have been replaced with uppercase labels (`ABC_OBJECT_PROPERTIES`) for simplicity.

Property	Value	Description
<code>ro.content</code>	Array	Zero or more device objects. See <a href="#">Device Identity View</a> for more information.

## All Devices List in Descending Order

Returns an identity list of all devices in one zone in a specified area, sorted in descending order by name.

## HTTP Header Fields

```
GET /v2/public/<BUILDING-ID>/areas/<AREA-ID>/zones/<ZONE-ID>/devices/identity?page=<PAGE-NUMBER>&size=<RESULTS-PER-PAGE>&sort=<SORT-FIELD>,<SORT-ORDER> HTTP/1.1
Authorization: <TOKEN-TYPE> <ACCESS-TOKEN>
Content-Type: application/json
Cache-Control: no-cache
```

## GET Request Structure

```
https://<HOST-IP>:<HOST-PORT>/v2/public/<BUILDING-ID>/areas/<AREA-ID>/zones/<ZONE-ID>/devices/identity?page=<PAGE-NUMBER>&size=<RESULTS-PER-PAGE>&sort=<SORT-FIELD>,<SORT-ORDER>
```

### Where:

- **<HOST-IP>** – IP address of the Trellix Lighting API server, and defaults to 192.168.2.100
- **<HOST-PORT>** – IP port on the Trellix Lighting API server, optional and defaults to 443 for secure (https) connections
- **<TOKEN-TYPE>** – Type of authentication token (always `bearer`)
- **<ACCESS-TOKEN>** – Trellix Lighting API token returned in a Get Public Login Token request
- **<BUILDING-ID>** – Case-sensitive ID of the building to which the target area belongs
- **<AREA-ID>** – Case-sensitive ID of the area to which the zone belongs
- **<ZONE-ID>** – Case-sensitive ID of the zone to which the devices are assigned
- **<PAGE-NUMBER>** – Page number to be returned
- **<RESULTS-PER-PAGE>** – Results per page, maximum size is 100
- **<SORT-FIELD>** – Value by which to sort the listed areas (always `name`)
- **<SORT-ORDER>** – Sort order (always `DESC`)

## GET Request Example

```
https://192.168.2.100/v2/public/C1B1/areas/A1/zones/Z1/devices/identity?page=1&size=10&sort=name,DESC
```

## JSON Body Example

```
{
  "content": [
    { DEVICE_OBJECT_PROPERTIES },
    { DEVICE_OBJECT_PROPERTIES }
  ],
  "last": true,
  "totalPages": 1,
  "totalElements": 6,
  "numberOfElements": 6,
  "first": true,
  "sort": [
    {
      "direction": "DESC",
      "property": "name",
      "ignoreCase": false,
      "nullHandling": "NATIVE",
      "descending": true,
      "ascending": false
    }
  ],
  "size": 10,
  "number": 0
}
```

Using `ro` as the descending All Devices List JSON response object in the example above, the relevant values are described below. See the [Common Response Properties](#) for descriptions of the standard list properties.

### NOTE

Some nested object properties above have been replaced with uppercase labels (`ABC_OBJECT_PROPERTIES`) for simplicity.

Property	Value	Description
<code>ro.content</code>	Array	Zero or more device objects. See <a href="#">Device Identity View</a> for more information.

## 2.6 – Occupancy Set Calls

The Occupancy Set API calls are used to discover the occupancy sets configured for an area, or to get information about a specific occupancy set.

## 2.6.1 – Requests for All Occupancy Sets

This section describes API calls that provide various ways to view a list of areas on the network.

### All Occupancy Sets Detail List

Returns a detail list of all configured occupancy sets in a specific area.

#### HTTP Header Fields

```
GET /v2/public/<BUILDING-ID>/areas/<AREA-ID>/occupancySets/detail HTTP/1.1
Authorization: <TOKEN-TYPE> <ACCESS-TOKEN>
Content-Type: application/json
Cache-Control: no-cache
```

#### GET Request Structure

```
https://<HOST-IP>:<HOST-PORT>/v2/public/<BUILDING-ID>/areas/<AREA-ID>/occupancySets/detail
```

Where:

- **<HOST-IP>** – IP address of the Trellix Lighting API server, and defaults to 192.168.2.100
- **<HOST-PORT>** – IP port on the Trellix Lighting API server, optional and defaults to 443 for secure (https) connections
- **<TOKEN-TYPE>** – Type of authentication token (always `bearer`)
- **<ACCESS-TOKEN>** – Trellix Lighting API token returned in a Get Public Login Token request
- **<BUILDING-ID>** – Case-sensitive ID of the building to which the requested area belongs
- **<AREA-ID>** – Case-sensitive ID of the area to which the OCCUPANCY sets belong

#### GET Request Example

```
https://192.168.2.100/v2/public/C1B1/areas/A1/occupancySets/detail
```

#### JSON Body Example

```
{
  "content": [
    { OCCUPANCY_SET_OBJECT_PROPERTIES },
    { OCCUPANCY_SET_OBJECT_PROPERTIES }
  ],
  "last": true,
  "totalPages": 1,
  "totalElements": 1,
  "numberOfElements": 1,
  "first": true,
  "size": 100,
  "number": 0
}
```

Using `ro` as the All Occupancy Sets Detail List JSON response object in the example above, the relevant values are described below. See the [Common Response Properties](#) for descriptions of the standard list properties.

#### NOTE

Some nested object properties above have been replaced with uppercase labels (`ABC_OBJECT_PROPERTIES`) for simplicity.

Property	Value	Description
<code>ro.content</code>	Array	Zero or more occupancy set objects. See <a href="#">Occupancy Set Detail View</a> for more.



## All Occupancy Sets Display List

Return a display list of all configured occupancy sets in a specific area.

### HTTP Header Fields

```
GET /v2/public/<BUILDING-ID>/areas/<AREA-ID>/occupancySets/display HTTP/1.1
Authorization: <TOKEN-TYPE> <ACCESS-TOKEN>
Content-Type: application/json
Cache-Control: no-cache
```

### GET Request Structure

```
https://<HOST-IP>:<HOST-PORT>/v2/public/<BUILDING-ID>/areas/<AREA-ID>/occupancySets/display
```

Where:

- **<HOST-IP>** – IP address of the Trellix Lighting API server, and defaults to 192.168.2.100
- **<HOST-PORT>** – IP port on the Trellix Lighting API server, optional and defaults to 443 for secure (https) connections
- **<TOKEN-TYPE>** – Type of authentication token (always `bearer`)
- **<ACCESS-TOKEN>** – Trellix Lighting API token returned in a Get Public Login Token request
- **<BUILDING-ID>** – Case-sensitive ID of the building to which the requested area belongs
- **<AREA-ID>** – Case-sensitive ID of the area to which the OCCUPANCY sets belong

### GET Request Example

```
https://192.168.2.100/v2/public/C1B1/areas/A1/occupancySets/display
```

### JSON Body Example

```
{
  "content": [
    { OCCUPANCY_SET_OBJECT_PROPERTIES },
    { OCCUPANCY_SET_OBJECT_PROPERTIES }
  ],
  "last": true,
  "totalPages": 1,
  "totalElements": 1,
  "numberOfElements": 1,
  "first": true,
  "size": 100,
  "number": 0
}
```

Using `ro` as the All Occupancy Sets Display List JSON response object in the example above, the relevant values are described below. See the [Common Response Properties](#) for descriptions of the standard list properties.

#### NOTE

Some nested object properties above have been replaced with uppercase labels (`ABC_OBJECT_PROPERTIES`) for simplicity.

Property	Value	Description
<code>ro.content</code>	Array	Zero or more occupancy set objects. See <a href="#">Occupancy Set Display View</a> for more information.

## All Occupancy Sets Identity List

Return an identity list of all configured occupancy sets in a specific area.

### HTTP Header Fields

```
GET /v2/public/<BUILDING-ID>/areas/<AREA-ID>/occupancySets/identity HTTP/1.1
Authorization: <TOKEN-TYPE> <ACCESS-TOKEN>
Content-Type: application/json
Cache-Control: no-cache
```

### GET Request Structure

```
https://<HOST-IP>:<HOST-PORT>/v2/public/<BUILDING-ID>/areas/<AREA-ID>/occupancySets/identity
```

Where:

- **<HOST-IP>** – IP address of the Trellix Lighting API server, and defaults to 192.168.2.100
- **<HOST-PORT>** – IP port on the Trellix Lighting API server, optional and defaults to 443 for secure (https) connections
- **<TOKEN-TYPE>** – Type of authentication token (always `bearer`)
- **<ACCESS-TOKEN>** – Trellix Lighting API token returned in a Get Public Login Token request

- `<BUILDING-ID>` – ID of the building to which the requested area belongs
- `<AREA-ID>` – Case-sensitive ID of the area to which the OCCUPANCY sets belong

### GET Request Example

```
https://192.168.2.100/v2/public/C1B1/areas/A1/occupancySets/identity
```

### JSON Body Example

```
{
  "content": [
    { OCCUPANCY_SET_OBJECT_PROPERTIES },
    { OCCUPANCY_SET_OBJECT_PROPERTIES }
  ],
  "last": true,
  "totalPages": 1,
  "totalElements": 1,
  "numberOfElements": 1,
  "first": true,
  "size": 100,
  "number": 0
}
```

Using `ro` as the All Occupancy Sets Identity List JSON response object in the example above, the relevant values are described below. See the [Common Response Properties](#) for descriptions of the standard list properties.

#### NOTE

Some nested object properties above have been replaced with uppercase labels (`ABC_OBJECT_PROPERTIES`) for simplicity.

Property	Value	Description
<code>ro.content</code>	Array	Zero or more occupancy set objects. See <a href="#">Occupancy Identity Display View</a> for more information.

## 2.6.2 – Requests for a Specific Occupancy Set

This section describes API calls that provide various views of the details of a single Occupancy Set on the network.

### Occupancy Set Detail View

Return the detail view for a specified occupancy set.

#### HTTP Header Fields

```
GET /v2/public/<BUILDING-ID>/areas/<AREA-ID>/occupancySets/<OCC-SET-ID>/detail HTTP/1.1
Authorization: <TOKEN-TYPE> <ACCESS-TOKEN>
Content-Type: application/json
Cache-Control: no-cache
```

### GET Request Structure

```
https://<HOST-IP>:<HOST-PORT>/v2/public/<BUILDING-ID>/areas/<AREA-ID>/occupancySets/<OCC-SET-ID>/detail
```

Where:

- `<HOST-IP>` – IP address of the Trellix Lighting API server, and defaults to 192.168.2.100
- `<HOST-PORT>` – IP port on the Trellix Lighting API server, optional and defaults to 443 for secure (https) connections
- `<TOKEN-TYPE>` – Type of authentication token (always `bearer`)
- `<ACCESS-TOKEN>` – Trellix Lighting API token returned in a Get Public Login Token request
- `<BUILDING-ID>` – Case-sensitive ID of the building to which the requested area belongs
- `<AREA-ID>` – Case-sensitive ID of the area to which the OCCUPANCY set belongs
- `<OCC-SET-ID>` – Case-sensitive ID of the occupancy set being requested

### GET Request Example

```
https://192.168.2.100/v2/public/C1B1/areas/A1/occupancySets/OS2/detail
```

### JSON Body Example

```
{
  "updatedAt": "2018-06-05T16:18:36.986-0400",
  "createdAt": "2018-06-05T16:18:36.750-0400",
  "publicId": "OS1",
  "name": "Default Occupancy",
  "zones": [
```

```

    { ZONE_OBJECT_PROPERTIES },
    { ZONE_OBJECT_PROPERTIES }
  ],
  "occupiedAction": {
    "id": "e99f7f20-ca14-11e7-8385-001d054d15d2",
    "name": "Occupied"
  },
  "unoccupiedAction": {
    "id": "e99e4204-ca14-11e7-9c31-001d054d15d2",
    "name": "Unoccupied"
  },
  "holdTime": 1200000,
  "area": { AREA_OBJECT_PROPERTIES },
  "isOccupiedLogical": true,
  "isOccupiedPhysical": true,
  "isAutoHoldTime": false,
  "isAutoOn": true
}

```

Using `ro` as the Occupancy Set Detail JSON response object in the example above, the relevant values are described below. See the [Common Response Properties](#) for descriptions of the standard list properties.

#### NOTE

Some nested object properties above have been replaced with uppercase labels (`ABC_OBJECT_PROPERTIES`) for simplicity.

Property	Value	Description
<code>ro.publicId</code>	OS1	The ID of this occupancy set (string).
<code>ro.name</code>	Default Occupancy	The name of this occupancy set (string).
<code>ro.zones</code>	Array	Zero or more zones objects to which this occupancy set applies. See <a href="#">Area Zone Identity View</a> for more information.
<code>ro.occupiedAction.name</code>	Occupied	The name of the occupied action (string).
<code>ro.unoccupiedAction.name</code>	Unoccupied	The name of the unoccupied action (string).
<code>ro.holdTime</code>	1200000	The configured hold time for this occupancy set (number).
<code>ro.area</code>	Object	The area object to which this occupancy set belongs. See <a href="#">Area Identity View</a> for more information.
<code>ro.isOccupiedLogical</code>	true	Whether this is a logical occupancy set (boolean).
<code>ro.isOccupiedPhysical</code>	true	Whether this is a physical occupancy set (boolean).
<code>ro.isAutoHoldTime</code>	false	Whether the automatic hold time is enabled for this occupancy set (boolean).
<code>ro.isAutoOn</code>	true	Whether automatic on time is enabled for this occupancy set (boolean).

### Occupancy Set Display View

Return the display view for a specified occupancy set.

#### HTTP Header Fields

```

GET /v2/public/<BUILDING-ID>/areas/<AREA-ID>/occupancySets/<OCC-SET-ID>/display HTTP/1.1
Authorization: <TOKEN-TYPE> <ACCESS-TOKEN>
Content-Type: application/json
Cache-Control: no-cache

```

#### GET Request Structure

```

https://<HOST-IP>:<HOST-PORT>/v2/public/<BUILDING-ID>/areas/<AREA-ID>/occupancySets/<OCC-SET-ID>/display

```

Where:

- `<HOST-IP>` – IP address of the Trellix Lighting API server, and defaults to 192.168.2.100
- `<HOST-PORT>` – IP port on the Trellix Lighting API server, optional and defaults to 443 for secure (https) connections
- `<TOKEN-TYPE>` – Type of authentication token (always `bearer`)
- `<ACCESS-TOKEN>` – Trellix Lighting API token returned in a Get Public Login Token request
- `<BUILDING-ID>` – Case-sensitive ID of the building to which the requested area belongs
- `<AREA-ID>` – Case-sensitive ID of the area to which the OCCUPANCY set belongs
- `<OCC-SET-ID>` – Case-sensitive ID of the occupancy set being requested

## GET Request Example

```
https://192.168.2.100/v2/public/C1B1/areas/A1/occupancySets/OS2/display
```

## JSON Body Example

```
{
  "updatedAt": "2018-06-05T16:18:36.986-0400",
  "publicId": "OS1",
  "name": "Default Occupancy",
  "zones": [
    { ZONE_OBJECT_PROPERTIES },
    { ZONE_OBJECT_PROPERTIES }
  ],
  "occupiedAction": {
    "updatedAt": "2018-06-05T16:18:36.986-0400",
    "id": "e99f7f20-ca14-11e7-8385-001d054d15d2",
    "name": "Occupied"
  },
  "unoccupiedAction": {
    "updatedAt": "2018-06-05T16:18:36.986-0400",
    "id": "e99e4204-ca14-11e7-9c31-001d054d15d2",
    "name": "Unoccupied"
  },
  "holdTime": 1200000,
  "area": { AREA_OBJECT_PROPERTIES },
  "isOccupiedLogical": true,
  "isOccupiedPhysical": true,
  "isAutoHoldTime": false,
  "isAutoOn": true
}
```

Using `ro` as the Occupancy Set Display JSON response object in the example above, the relevant values are described below. See the [Common Response Properties](#) for descriptions of the standard list properties.

**NOTE**

Some nested object properties above have been replaced with uppercase labels (`ABC_OBJECT_PROPERTIES`) for simplicity.

Property	Value	Description
<code>ro.publicId</code>	OS1	The ID of this occupancy set (string).
<code>ro.name</code>	Default Occupancy	The name of this occupancy set (string).
<code>ro.zones</code>	Array	Zero or more zones objects to which this occupancy set applies. See <a href="#">Area Zone Display View</a> for more information.
<code>ro.occupiedAction.name</code>	Occupied	The name of the occupied action (string).
<code>ro.unoccupiedAction.name</code>	Unoccupied	The name of the unoccupied action (string).
<code>ro.holdTime</code>	1200000	The configured hold time for this occupancy set (number).
<code>ro.area</code>	Object	The area object to which this occupancy set belongs. See <a href="#">Area Identity View</a> for more information.
<code>ro.isOccupiedLogical</code>	true	Whether this is a logical occupancy set (boolean).
<code>ro.isOccupiedPhysical</code>	true	Whether this is a physical occupancy set (boolean).
<code>ro.isAutoHoldTime</code>	false	Whether the automatic hold time is enabled for this occupancy set (boolean).
<code>ro.isAutoOn</code>	true	Whether automatic on time is enabled for this occupancy set (boolean).

**Occupancy Set Identity View**

Return the identity view for a specified occupancy set.

## HTTP Header Fields

```
GET /v2/public/<BUILDING-ID>/areas/<AREA-ID>/occupancySets/<OCC-SET-ID>/identity HTTP/1.1
Authorization: <TOKEN-TYPE> <ACCESS-TOKEN>
Content-Type: application/json
Cache-Control: no-cache
```

## GET Request Structure

```
https://<HOST-IP>:<HOST-PORT>/v2/public/<BUILDING-ID>/areas/<AREA-ID>/occupancySets/<OCC-SET-ID>/identity
```

### Where:

- **<HOST-IP>** – IP address of the Trellix Lighting API server, and defaults to 192.168.2.100
- **<HOST-PORT>** – IP port on the Trellix Lighting API server, optional and defaults to 443 for secure (https) connections
- **<TOKEN-TYPE>** – Type of authentication token (always *bearer*)
- **<ACCESS-TOKEN>** – Trellix Lighting API token returned in a Get Public Login Token request
- **<BUILDING-ID>** – Case-sensitive ID of the building to which the requested area belongs
- **<AREA-ID>** – Case-sensitive ID of the area to which the OCCUPANCY set belongs
- **<OCC-SET-ID>** – Case-sensitive ID of the occupancy set being requested

## GET Request Example

```
https://192.168.2.100/v2/public/C1B1/areas/A1/occupancySets/<OCC-SET-ID>/identity
```

## JSON Body Example

```
{
  "publicId": "OS2",
  "name": "Occupancy Set 1",
  "area": { AREA_OBJECT_PROPERTIES },
  "isOccupiedLogical": false
}
```

Using `ro` as the Occupancy Set Identity JSON response object in the example above, the relevant values are described below. See the [Common Response Properties](#) for descriptions of the standard list properties.

### NOTE

Some nested object properties above have been replaced with uppercase labels (`ABC_OBJECT_PROPERTIES`) for simplicity.

Property	Value	Description
<code>ro.publicId</code>	OS1	The ID of this occupancy set (string).
<code>ro.name</code>	Default Occupancy	The name of this occupancy set (string).
<code>ro.area</code>	Object	The area object to which this occupancy set belongs. See <a href="#">Area Identity View</a> for more information.
<code>ro.isOccupiedLogical</code>	true	Whether this is a logical occupancy set (boolean).

## 2.7 – Device Calls

The Occupancy Set API calls are used to discover the devices that belong to a specific building, or to get information about a specific device.

### Device Detail View

Return the detail information for a specific device.

#### HTTP Header Fields

```
GET /v2/public/<BUILDING-ID>/devices/<DEVICE-ID>/detail HTTP/1.1
Authorization: <TOKEN-TYPE> <ACCESS-TOKEN>
Content-Type: application/json
Cache-Control: no-cache
```

## GET Request Structure

```
https://<HOST-IP>:<HOST-PORT>/v2/public/<BUILDING-ID>/devices/<DEVICE-ID>/detail
```

### Where:

- **<HOST-IP>** – IP address of the Trellix Lighting API server, and defaults to 192.168.2.100
- **<HOST-PORT>** – IP port on the Trellix Lighting API server, optional and defaults to 443 for secure (https) connections
- **<TOKEN-TYPE>** – Type of authentication token (always *bearer*)
- **<ACCESS-TOKEN>** – Trellix Lighting API token returned in a Get Public Login Token request
- **<BUILDING-ID>** – Case-sensitive ID of the building to which the requested device belongs
- **<DEVICE-ID>** – Case-sensitive ID of the device being requested

## GET Request Example

```
https://192.168.2.100/v2/public/C1B1/devices/D1/detail
```

## JSON Body Example

```
{
  "updatedAt": "2018-06-05T16:24:07.530-0400",
  "createdAt": "2018-06-05T16:18:37.105-0400",
  "publicId": "D5",
  "name": "Integrated Sensor 3",
  "description": "Need Requirements",
  "physicalLocation": "Floor 1",
  "systemLocation": "ZB>Int Sensor 3",
  "model": "W-IS",
  "hardwareVersion": "0",
  "firmwareVersion": "16842871",
  "deviceSubtype": "cc343f99-ad81-41f7-8c02-6a6d13d425b4",
  "deviceStatus": "GOOD",
  "area": { AREA_OBJECT_PROPERTIES },
  "endpoints": [
    { ENDPOINT_OBJECT_PROPERTIES },
    { ENDPOINT_OBJECT_PROPERTIES }
  ],
  "networkInterfaces": [
    {
      "updatedAt": "2018-06-05T16:24:07.639-0400",
      "createdAt": "2018-06-05T16:18:37.105-0400",
      "name": "Need requirements",
      "attachedToNetwork": {
        "name": "ZigBeeNetworkManager",
        "publicId": "N3"
      },
      "clientNetworkProperties": {
        "name": "zigbeeClientNetwork",
        "nodeId": 5518,
        "macId": 3781220692507278,
        "permitAssociation": false,
        "stackVersion": 0,
        "stackVendor": 0,
        "isOtaSupported": false,
        "uptime": 0
      },
      "deviceId": "ff685e6c-ca14-11e7-a07d-001d054d15d2"
    }
  ],
  "isIdentify": false,
  "isReachable": true
}
```

Using `ro` as the Device Detail View response object in the example above, the relevant values are described below. See the [Common Response Properties](#) for more information about the standard list property descriptions.

**NOTE**

Some nested object properties above have been replaced with uppercase labels (`ABC_OBJECT_PROPERTIES`) for simplicity.

Property	Value	Description
<code>ro.publicId</code>	D5	The ID of this device (string).
<code>ro.name</code>	Integrated Sensor 3	The name of this device (string).
<code>ro.description</code>	Need Requirements	The name of this device (string).
<code>ro.physicalLocation</code>	Floor 1	The physical location to which this device is assigned (string).
<code>ro.systemLocation</code>	ZB>Int Sensor 3	The system location to which this device is assigned (string).
<code>ro.model</code>	W-IS	The model number of this device (string).
<code>ro.hardwareVersion</code>	0	The hardware version of this device (string).
<code>ro.firmwareVersion</code>	16842871	The firmware version of this device (string).

Property	Value	Description
<code>ro.deviceStatus</code>	GOOD	The status of this device (string).
<code>ro.area</code>	Object	The area object to which this device belongs. See <a href="#">Area Identity View</a> for more information.
<code>ro.endpoints</code>	Array	Selected data for zero or more endpoint objects that belong to this device. See <a href="#">Endpoint Detail View</a> for more information.
<code>ro.networkInterfaces</code>	Array	Selected data for zero or more network interface objects available on this device.
<code>ro.isIdentify</code>	false	Whether this device has isIdentify status (boolean).
<code>ro.isReachable</code>	true	Whether this device is reachable (boolean).

### Device Display View

Return the display view for a specific device.

#### HTTP Header Fields

```
GET /v2/public/<BUILDING-ID>/devices/<DEVICE-ID>/display HTTP/1.1
Authorization: <TOKEN-TYPE> <ACCESS-TOKEN>
Content-Type: application/json
Cache-Control: no-cache
```

#### GET Request Structure

```
https://<HOST-IP>:<HOST-PORT>/v2/public/<BUILDING-ID>/devices/<DEVICE-ID>/display
```

Where:

- `<HOST-IP>` – IP address of the Trellix Lighting API server, and defaults to 192.168.2.100
- `<HOST-PORT>` – IP port on the Trellix Lighting API server, optional and defaults to 443 for secure (https) connections
- `<TOKEN-TYPE>` – Type of authentication token (always `bearer`)
- `<ACCESS-TOKEN>` – Trellix Lighting API token returned in a Get Public Login Token request
- `<BUILDING-ID>` – Case-sensitive ID of the building to which the requested device belongs
- `<DEVICE-ID>` – Case-sensitive ID of the device being requested

#### GET Request Example

```
https://192.168.2.100/v2/public/C1B1/devices/D1/display
```

#### JSON Body Example

```
{
  "updatedAt": "2018-06-05T16:24:07.530-0400",
  "publicId": "D5",
  "name": "Integrated Sensor 3",
  "description": "Need Requirements",
  "physicalLocation": "Floor 1",
  "systemLocation": "ZB>Int Sensor 3",
  "model": "W-IS",
  "hardwareVersion": "0",
  "firmwareVersion": "16842871",
  "deviceSubtype": "cc343f99-ad81-41f7-8c02-6a6d13d425b4",
  "deviceStatus": "GOOD",
  "area": { AREA_OBJECT_PROPERTIES },
  "endpoints": [
    { ENDPOINT_OBJECT_PROPERTIES },
    { ENDPOINT_OBJECT_PROPERTIES }
  ],
  "networkInterfaces": [
    {
      "updatedAt": "2018-06-05T16:24:07.639-0400",
      "name": "Need requirements",
      "attachedToNetwork": {
        "name": "ZigBeeNetworkManager",
        "publicId": "N3"
      },
    },
    {
      "clientNetworkProperties": {
        "name": "zigbeeClientNetwork",
        "nodeId": 5518,
        "macId": 3781220692507278,
        "permitAssociation": false,
      }
    }
  ]
}
```

```

    "stackVersion": 0,
    "stackVendor": 0,
    "isOtaSupported": false,
    "uptime": 0
  },
  "deviceId": "ff685e6c-ca14-11e7-a07d-001d054d15d2"
}
],
"isIdentify": false,
"isReachable": true
}

```

Using `ro` as the Device Display View response object in the example above, the relevant values are described below. See the [Common Response Properties](#) for more information about the standard list property descriptions.

#### NOTE

Some nested object properties above have been replaced with uppercase labels (`ABC_OBJECT_PROPERTIES`) for simplicity.

Property	Value	Description
<code>ro.publicId</code>	D5	The ID of this device (string).
<code>ro.name</code>	Integrated Sensor 3	The name of this device (string).
<code>ro.description</code>	Need Requirements	The name of this device (string).
<code>ro.physicalLocation</code>	Floor 1	The physical location to which this device is assigned (string).
<code>ro.systemLocation</code>	ZB>Int Sensor 3	The system location to which this device is assigned (string).
<code>ro.model</code>	W-IS	The model number of this device (string).
<code>ro.hardwareVersion</code>	0	The hardware version of this device (string).
<code>ro.firmwareVersion</code>	16842871	The firmware version of this device (string).
<code>ro.deviceStatus</code>	GOOD	The status of this device (string).
<code>ro.area</code>	Object	The area object to which this device belongs. See <a href="#">Area Identity View</a> for more information.
<code>ro.endpoints</code>	Array	Selected data for zero or more endpoint objects that belong to this device. See <a href="#">Endpoint Detail View</a> for more information.
<code>ro.networkInterfaces</code>	Array	Selected data for zero or more network interface objects available on this device.
<code>ro.isIdentify</code>	false	Whether this device has <code>isIdentify</code> status (boolean).
<code>ro.isReachable</code>	true	Whether this device is reachable (boolean).



## Device Identity View

Return the identity view for a specific device.

### HTTP Header Fields

```
GET /v2/public/<BUILDING-ID>/devices/<DEVICE-ID>/identity HTTP/1.1
Authorization: <TOKEN-TYPE> <ACCESS-TOKEN>
Content-Type: application/json
Cache-Control: no-cache
```

### GET Request Structure

```
https://<HOST-IP>:<HOST-PORT>/v2/public/<BUILDING-ID>/devices/<DEVICE-ID>/identity
```

Where:

- **<HOST-IP>** – IP address of the Trellix Lighting API server, and defaults to 192.168.2.100
- **<HOST-PORT>** – IP port on the Trellix Lighting API server, optional and defaults to 443 for secure (https) connections
- **<TOKEN-TYPE>** – Type of authentication token (always `bearer`)
- **<ACCESS-TOKEN>** – Trellix Lighting API token returned in a Get Public Login Token request
- **<BUILDING-ID>** – Case-sensitive ID of the building to which the requested device belongs
- **<DEVICE-ID>** – Case-sensitive ID of the device being requested

### GET Request Example

```
https://192.168.2.100/v2/public/C1B1/devices/D1/identity
```

### JSON Body Example

```
{
  "publicId": "D5",
  "name": "Integrated Sensor 3"
}
```

Using `ro` as the Device Identity View response object in the example above, the relevant values are described below.

Property	Value	Description
<code>ro.publicId</code>	D5	The ID of this device (string).
<code>ro.name</code>	Integrated Sensor 3	The name of this device (string).

## 2.8 – Endpoint Calls

The Endpoint API calls are used to get information about an endpoint on a specific device.

### Endpoint Detail View

Return the detail information for an endpoint on a specific device.

### HTTP Header Fields

```
GET /v2/public/<BUILDING-ID>/devices/<DEVICE-ID>/endpoint/<ENDPOINT-ID>/detail HTTP/1.1
Authorization: <TOKEN-TYPE> <ACCESS-TOKEN>
Content-Type: application/json
Cache-Control: no-cache
```

### GET Request Structure

```
https://<HOST-IP>:<HOST-PORT>/v2/public/<BUILDING-ID>/devices/<DEVICE-ID>/endpoint/<ENDPOINT-ID>/detail
```

Where:

- **<HOST-IP>** – IP address of the Trellix Lighting API server, and defaults to 192.168.2.100
- **<HOST-PORT>** – IP port on the Trellix Lighting API server, optional and defaults to 443 for secure (https) connections
- **<TOKEN-TYPE>** – Type of authentication token (always `bearer`)
- **<ACCESS-TOKEN>** – Trellix Lighting API token returned in a Get Public Login Token request
- **<BUILDING-ID>** – Case-sensitive ID of the building to which the requested device belongs
- **<DEVICE-ID>** – Case-sensitive ID of the device to which the endpoint belongs
- **<ENDPOINT-ID>** – ID of the endpoint being requested

### GET Request Example

```
https://192.168.2.100/v2/public/C1B1/devices/D1/endpoint/E1/detail
```

## JSON Body Example

```

{
  "updatedAt": "2018-06-05T16:24:07.639-0400",
  "name": "Occupancy Sensor 5 a0db",
  "publicId": "E17",
  "description": "Need requirements",
  "physicalLocation": "Floor 1",
  "systemLocation": "ZB>Ceiling1 >Occ 5",
  "endpointSubtype": "7fe69681-ffd2-403a-a774-db07472ec345",
  "device": { DEVICE_OBJECT_PROPERTIES },
  "area": { AREA_OBJECT_PROPERTIES },
  "endpointDecorators": [
    {
      "name": "occupancySensor",
      "holdTime": 1200000,
      "occupancySets": [
        { OCCUPANCY_SET_OBJECT_PROPERTIES },
        { OCCUPANCY_SET_OBJECT_PROPERTIES }
      ],
      "sensitivity": 0,
      "isOccupied": true,
      "isEnabled": true,
      "isIndicatorEnabled": true,
      "isAutoHoldTime": false,
      "isWalkthroughMode": false,
      "isTestMode": false
    }
  ],
  "isAssigned": true,
  "isInDaylightSet": false,
  "isIdentify": false,
  "isAvailableForOLDLSet": false
}

```

Using `ro` as the Endpoint Detail View response object in the example above, the relevant values are described below. See the [Common Response Properties](#) for more information about the standard list property descriptions.

**NOTE**

Some nested object properties above have been replaced with uppercase labels (`ABC_OBJECT_PROPERTIES`) for simplicity.

Property	Value	Description
<code>ro.publicId</code>	E17	The ID of this endpoint (string).
<code>ro.name</code>	Occupancy Sensor 5 a0db	The name of this endpoint (string).
<code>ro.description</code>	Need Requirements	The description of this endpoint (string).
<code>ro.physicalLocation</code>	Floor 1	The physical location to which this endpoint is assigned (string).
<code>ro.systemLocation</code>	ZB>Ceiling1 >Occ 5	The system location to which this endpoint is assigned (string).
<code>ro.device</code>	Object	The device object to which this endpoint belongs. See <a href="#">Device Identity View</a> for more information.
<code>ro.device</code>	Object	The area object to which this endpoint belongs. See <a href="#">Area Identity View</a> for more information.
<code>ro.area</code>	Object	The area object to which this endpoint belongs. See <a href="#">Area Identity View</a> for more information.
<code>ro.endpointDecorators</code>	Array	Zero or more endpoint decorator objects.
<code>ro.isAssigned</code>	true	Whether this endpoint is assigned (boolean).
<code>ro.isInDaylightSet</code>	false	Whether this endpoint is part of a daylight set (boolean).
<code>ro.isIdentify</code>	false	Whether this endpoint has isIdentify status (boolean).
<code>ro.isAvailableForOLDLSet</code>	false	Whether this endpoint is accessible for OLDL set (boolean).

**Endpoint Display View**

Return the display view for an endpoint on a specific device.

## HTTP Header Fields

```
GET /v2/public/<BUILDING-ID>/devices/<DEVICE-ID>/endpoint/<ENDPOINT-ID>/display HTTP/1.1
Authorization: <TOKEN-TYPE> <ACCESS-TOKEN>
Content-Type: application/json
Cache-Control: no-cache
```

## GET Request Structure

```
https://<HOST-IP>:<HOST-PORT>/v2/public/<BUILDING-ID>/devices/<DEVICE-ID>/endpoint/<ENDPOINT-ID>/display
```

### Where:

- <HOST-IP> – IP address of the Trellix Lighting API server, and defaults to 192.168.2.100
- <HOST-PORT> – IP port on the Trellix Lighting API server, optional and defaults to 443 for secure (https) connections
- <TOKEN-TYPE> – Type of authentication token (always `bearer`)
- <ACCESS-TOKEN> – Trellix Lighting API token returned in a Get Public Login Token request
- <BUILDING-ID> – Case-sensitive ID of the building to which the requested device belongs
- <DEVICE-ID> – Case-sensitive ID of the device to which the endpoint belongs
- <ENDPOINT-ID> – ID of the endpoint being requested

## GET Request Example

```
https://192.168.2.100/v2/public/C1B1/devices/D1/endpoint/E1/display
```

## JSON Body Example

```
{
  "updatedAt": "2018-06-05T16:24:07.639-0400",
  "name": "Occupancy Sensor 5 a0db",
  "publicId": "E17",
  "description": "Need requirements",
  "physicalLocation": "Floor 1",
  "systemLocation": "ZB>Ceiling1 >Occ 5",
  "endpointSubtype": "7fe69681-ffd2-403a-a774-db07472ec345",
  "device": { DEVICE_OBJECT_PROPERTIES },
  "area": { AREA_OBJECT_PROPERTIES },
  "endpointDecorators": [
    {
      "name": "occupancySensor",
      "holdTime": 1200000,
      "occupancySets": [
        { OCCUPANCY_SET_OBJECT_PROPERTIES },
        { OCCUPANCY_SET_OBJECT_PROPERTIES }
      ],
      "sensitivity": 0,
      "isOccupied": true,
      "isEnabled": true,
      "isIndicatorEnabled": true,
      "isAutoHoldTime": false,
      "isWalkthroughMode": false,
      "isTestMode": false
    }
  ],
  "isAssigned": true,
  "isInDaylightSet": false,
  "isIdentify": false,
  "isAvailableForOLDLSet": false
}
```

Using `ro` as the Endpoint Display View response object in the example above, the relevant values are described below. See the [Common Response Properties](#) for more information about the standard list property descriptions.

### NOTE

Some nested object properties above have been replaced with uppercase labels (`ABC_OBJECT_PROPERTIES`) for simplicity.

Property	Value	Description
<code>ro.publicId</code>	E17	The ID of this endpoint (string).

Property	Value	Description
<code>ro.name</code>	Occupancy Sensor 5 a0db	The name of this endpoint (string).
<code>ro.description</code>	Need Requirements	The description of this endpoint (string).
<code>ro.physicalLocation</code>	Floor 1	The physical location to which this endpoint is assigned (string).
<code>ro.systemLocation</code>	ZB>Ceiling1 >Occ 5	The system location to which this endpoint is assigned (string).
<code>ro.device</code>	Object	The device object to which this endpoint belongs. See <a href="#">Device Identity View</a> for more information.
<code>ro.device</code>	Object	The area object to which this endpoint belongs. See <a href="#">Area Identity View</a> for more information.
<code>ro.area</code>	Object	The area object to which this endpoint belongs. See <a href="#">Area Identity View</a> for more information.
<code>ro.endpointDecorators</code>	Array	Zero or more endpoint decorator objects.
<code>ro.isAssigned</code>	true	Whether this endpoint is assigned (boolean).
<code>ro.isInDaylightSet</code>	false	Whether this endpoint is part of a daylight set (boolean).
<code>ro.isIdentify</code>	false	Whether this endpoint has identify status (boolean).
<code>ro.isAvailableForOLDLSet</code>	false	Whether this endpoint is accessible for OLDL set (boolean).

### Endpoint Identity View

Return the identity view for an endpoint on a specific device.

#### HTTP Header Fields

```
GET /v2/public/<BUILDING-ID>/devices/<DEVICE-ID>/endpoint/<ENDPOINT-ID>/identity HTTP/1.1
Authorization: <TOKEN-TYPE> <ACCESS-TOKEN>
Content-Type: application/json
Cache-Control: no-cache
```

#### GET Request Structure

```
https://<HOST-IP>:<HOST-PORT>/v2/public/<BUILDING-ID>/devices/<DEVICE-ID>/endpoint/<ENDPOINT-ID>/identity
```

#### Where:

- `<HOST-IP>` – IP address of the Trellix Lighting API server, and defaults to 192.168.2.100
- `<HOST-PORT>` – IP port on the Trellix Lighting API server, optional and defaults to 443 for secure (https) connections
- `<TOKEN-TYPE>` – Type of authentication token (always `bearer`)
- `<ACCESS-TOKEN>` – Trellix Lighting API token returned in a Get Public Login Token request
- `<BUILDING-ID>` – Case-sensitive ID of the building to which the requested device belongs
- `<DEVICE-ID>` – Case-sensitive ID of the device to which the endpoint belongs
- `<ENDPOINT-ID>` – ID of the endpoint being requested

#### GET Request Example

```
https://192.168.2.100/v2/public/C1B1/devices/D1/endpoint/E1/identity
```

#### JSON Body Example

```
{
  "name": "Occupancy Sensor 5 a0db",
  "publicId": "E17",
}
```

Using `ro` as the Endpoint Display View response object in the example above, the relevant values are described below. See the [Common Response Properties](#) for more information about the standard list property descriptions.

#### NOTE

Some nested object properties above have been replaced with uppercase labels (`ABC_OBJECT_PROPERTIES`) for simplicity.

Property	Value	Description
<code>ro.publicId</code>	E17	The ID of this endpoint (string).
<code>ro.name</code>	Occupancy Sensor 5 a0db	The name of this endpoint (string).

## 2.9 – Network Calls

The Network API calls are used to discover the networks configured in a specific building, or to get information about a specific network.

### 2.9.1 – Requests for All Networks

This section describes API calls that provide various ways to view a list of networks configured in a building.

#### All Networks Detail List

Returns a detail list of all configured networks in the specified building.

##### HTTP Header Fields

```
GET /v2/public/<BUILDING-ID>/networks/detail HTTP/1.1
Authorization: <TOKEN-TYPE> <ACCESS-TOKEN>
Content-Type: application/json
Cache-Control: no-cache
```

##### GET Request Structure

```
https://<HOST-IP>:<HOST-PORT>/v2/public/<BUILDING-ID>/networks/detail
```

Where:

- **<HOST-IP>** – IP address of the Trellix Lighting API server, and defaults to 192.168.2.100
- **<HOST-PORT>** – IP port on the Trellix Lighting API server, optional and defaults to 443 for secure (https) connections
- **<TOKEN-TYPE>** – Type of authentication token (always `bearer`)
- **<ACCESS-TOKEN>** – Trellix Lighting API token returned in a Get Public Login Token request
- **<BUILDING-ID>** – Case-sensitive ID of the building to which the requested area belongs

##### GET Request Example

```
https://192.168.2.100/v2/public/C1B1/networks/detail
```

##### JSON Body Example

```
[
  { NETWORK_OBJECT_PROPERTIES },
  { NETWORK_OBJECT_PROPERTIES }
]
```

Using `ro` as the All Networks Detail List response in the example above, the relevant values are described below.

#### NOTE

Some nested object properties above have been replaced with uppercase labels (`ABC_OBJECT_PROPERTIES`) for simplicity.

Property	Value	Description
<code>ro</code>	Array	An array of zero or more network objects. See <a href="#">Network Detail View</a> for more information.

#### All Networks Display List

Return a display list of all configured networks in the specified building.

##### HTTP Header Fields

```
GET /v2/public/<BUILDING-ID>/networks/display HTTP/1.1
Authorization: <TOKEN-TYPE> <ACCESS-TOKEN>
Content-Type: application/json
Cache-Control: no-cache
```

##### GET Request Structure

```
https://<HOST-IP>:<HOST-PORT>/v2/public/<BUILDING-ID>/networks/display
```

Where:

- **<HOST-IP>** – IP address of the Trellix Lighting API server, and defaults to 192.168.2.100
- **<HOST-PORT>** – IP port on the Trellix Lighting API server, optional and defaults to 443 for secure (https) connections
- **<TOKEN-TYPE>** – Type of authentication token (always `bearer`)
- **<ACCESS-TOKEN>** – Trellix Lighting API token returned in a Get Public Login Token request
- **<BUILDING-ID>** – Case-sensitive ID of the building to which the requested area belongs

### GET Request Example

```
https://192.168.2.100/v2/public/C1B1/networks/display
```

### JSON Body Example

```
[
  { NETWORK_OBJECT_PROPERTIES },
  { NETWORK_OBJECT_PROPERTIES }
]
```

Using `ro` as the All Networks Display List response in the example above, the relevant values are described below.

**NOTE**

Some nested object properties above have been replaced with uppercase labels (`ABC_OBJECT_PROPERTIES`) for simplicity.

Property	Value	Description
<code>ro</code>	Array	An array of zero or more network objects. See <a href="#">Network Display View</a> for more information.

### All Networks Identity List

Return an identity list of all configured networks in the specified building.

#### HTTP Header Fields

```
GET /v2/public/<BUILDING-ID>/networks/identity HTTP/1.1
Authorization: <TOKEN-TYPE> <ACCESS-TOKEN>
Content-Type: application/json
Cache-Control: no-cache
```

### GET Request Structure

```
https://<HOST-IP>:<HOST-PORT>/v2/public/<BUILDING-ID>/networks/identity
```

Where:

- `<HOST-IP>` – IP address of the Trellix Lighting API server, and defaults to 192.168.2.100
- `<HOST-PORT>` – IP port on the Trellix Lighting API server, optional and defaults to 443 for secure (https) connections
- `<TOKEN-TYPE>` – Type of authentication token (always `bearer`)
- `<ACCESS-TOKEN>` – Trellix Lighting API token returned in a Get Public Login Token request
- `<BUILDING-ID>` – ID of the building to which the requested area belongs

### GET Request Example

```
https://192.168.2.100/v2/public/C1B1/networks/identity
```

### JSON Body Example

```
[
  { NETWORK_OBJECT_PROPERTIES },
  { NETWORK_OBJECT_PROPERTIES }
]
```

Using `ro` as the All Networks Identity List response in the example above, the relevant values are described below.

**NOTE**

Some nested object properties above have been replaced with uppercase labels (`ABC_OBJECT_PROPERTIES`) for simplicity.

Property	Value	Description
<code>ro</code>	Array	An array of zero or more network objects. See <a href="#">Network Identity View</a> for more information.

## 2.9.2 – Requests for a Specific Network

This section describes API calls that provide various views of the details of a single network in a building.

### Network Detail View

Return the detail view for a specified network.

#### HTTP Header Fields

```
GET /v2/public/<BUILDING-ID>/networks/<NETWORK-ID>/detail HTTP/1.1
Authorization: <TOKEN-TYPE> <ACCESS-TOKEN>
Content-Type: application/json
Cache-Control: no-cache
```

## GET Request Structure

```
https://<HOST-IP>:<HOST-PORT>/v2/public/<BUILDING-ID>/networks/<NETWORK-ID>/detail
```

### Where:

- **<HOST-IP>** – IP address of the Trellix Lighting API server, and defaults to 192.168.2.100
- **<HOST-PORT>** – IP port on the Trellix Lighting API server, optional and defaults to 443 for secure (https) connections
- **<TOKEN-TYPE>** – Type of authentication token (always `bearer`)
- **<ACCESS-TOKEN>** – Trellix Lighting API token returned in a Get Public Login Token request
- **<BUILDING-ID>** – Case-sensitive ID of the building to which the requested network belongs
- **<NETWORK-ID>** – Case-sensitive ID of the network being requested

## GET Request Example

```
https://192.168.2.100/v2/public/C1B1/networks/N1/detail
```

## JSON Body Example

```
{
  "updatedAt": "2018-06-05T16:18:37.152-0400",
  "createdAt": "2018-06-05T16:18:15.706-0400",
  "name": "ZigBeeNetworkManager",
  "publicId": "N3",
  "protocol": "ZigBee",
  "attachedDevices": [
    { DEVICE_OBJECT_PROPERTIES }
  ],
  "masterNetworkInterface": {
    "name": "Controller"
  }
}
```

Using `ro` as the Network Detail View response object in the example above, the relevant values are described below. See the [Common Response Properties](#) for more information about the standard list property descriptions.

### NOTE

Some nested object properties above have been replaced with uppercase labels (`ABC_OBJECT_PROPERTIES`) for simplicity.

Property	Value	Description
<code>ro.publicId</code>	N3	The ID of this network (string).
<code>ro.name</code>	ZigBeeNetworkManager	The name of this network (string).
<code>ro.protocol</code>	ZigBee	The network communication protocol (string).
<code>ro.attachedDevices</code>	Array	Zero or more device objects that are attached to this network. See <a href="#">Device Identity View</a> for more information.
<code>ro.masterNetworkInterface</code>	Object	The master network interface object.

## Network Display View

Return the display information for a specified network.

### HTTP Header Fields

```
GET /v2/public/<BUILDING-ID>/networks/<NETWORK-ID>/display HTTP/1.1
Authorization: <TOKEN-TYPE> <ACCESS-TOKEN>
Content-Type: application/json
Cache-Control: no-cache
```

## GET Request Structure

```
https://<HOST-IP>:<HOST-PORT>/v2/public/<BUILDING-ID>/networks/<NETWORK-ID>/display
```

### Where:

- **<HOST-IP>** – IP address of the Trellix Lighting API server, and defaults to 192.168.2.100
- **<HOST-PORT>** – IP port on the Trellix Lighting API server, optional and defaults to 443 for secure (https) connections
- **<TOKEN-TYPE>** – Type of authentication token (always `bearer`)
- **<ACCESS-TOKEN>** – Trellix Lighting API token returned in a Get Public Login Token request
- **<BUILDING-ID>** – Case-sensitive ID of the building to which the requested network belongs
- **<NETWORK-ID>** – Case-sensitive ID of the network being requested



## GET Request Example

```
https://192.168.2.100/v2/public/C1B1/networks/N1/display
```

## JSON Body Example

```
{
  "updatedAtTime": "2018-06-05T16:18:37.152-0400",
  "name": "ZigBeeNetworkManager",
  "publicId": "N3",
  "protocol": "ZigBee",
  "attachedDevices": [
    { DEVICE_OBJECT_PROPERTIES },
    { DEVICE_OBJECT_PROPERTIES }
  ]
}
```

Using `ro` as the Network Display View response object in the example above, the relevant values are described below. See the [Common Response Properties](#) for more information about the standard list property descriptions.

### NOTE

Some nested object properties above have been replaced with uppercase labels (`ABC_OBJECT_PROPERTIES`) for simplicity.

Property	Value	Description
<code>ro.publicId</code>	N3	The ID of this network (string).
<code>ro.name</code>	ZigBeeNetworkManager	The name of this network (string).
<code>ro.protocol</code>	ZigBee	The network communication protocol (string).
<code>ro.attachedDevices</code>	Array	Zero or more device objects that are attached to this network. See <a href="#">Device Identity View</a> for more information.

## Network Identity View

Return the identity information for a specified network.

### HTTP Header Fields

```
GET /v2/public/<BUILDING-ID>/networks/<NETWORK-ID>/identity HTTP/1.1
Authorization: <TOKEN-TYPE> <ACCESS-TOKEN>
Content-Type: application/json
Cache-Control: no-cache
```

### GET Request Structure

```
https://<HOST-IP>:<HOST-PORT>/v2/public/<BUILDING-ID>/networks/<NETWORK-ID>/identity
```

Where:

- `<HOST-IP>` – IP address of the Trellix Lighting API server, and defaults to 192.168.2.100
- `<HOST-PORT>` – IP port on the Trellix Lighting API server, optional and defaults to 443 for secure (https) connections
- `<TOKEN-TYPE>` – Type of authentication token (always `bearer`)
- `<ACCESS-TOKEN>` – Trellix Lighting API token returned in a Get Public Login Token request
- `<BUILDING-ID>` – Case-sensitive ID of the building to which the requested network belongs
- `<NETWORK-ID>` – Case-sensitive ID of the network being requested

### GET Request Example

```
https://192.168.2.100/v2/public/C1B1/networks/N1/identity
```

### JSON Body Example

```
{
  "name": "ZigBeeNetworkManager",
  "publicId": "N3"
}
```

Using `ro` as the Network Identity View response object in the example above, the relevant values are described below.

Property	Value	Description
<code>ro.publicId</code>	N3	The ID of this network (string).
<code>ro.name</code>	ZigBeeNetworkManager	The name of this network (string).



## 2.10 – Control Commands

The Control Commands API allow authorized users to send specific commands to Trellix.

### 2.10.1 – Acknowledge Alarms

Send an alarm acknowledgement request to Trellix. The request can acknowledge all alarms or specify a list of one or more alarms to acknowledge.

#### HTTP Header Fields

```
POST /v2/public/alarms/acknowledgement HTTP/1.1
Authorization: <TOKEN-TYPE> <ACCESS-TOKEN>
Content-Type: application/json
Cache-Control: no-cache
```

#### POST Request Structure

```
https://<ipAddress>/<version>/public/alarms/acknowledgement
```

Where:

- <HOST-IP> – IP address of the Trellix Lighting API server, and defaults to 192.168.2.100
- <HOST-PORT> – IP port on the Trellix Lighting API server, optional and defaults to 443 for secure (https) connections
- <TOKEN-TYPE> – Type of authentication token (always `bearer`)
- <ACCESS-TOKEN> – Trellix Lighting API token returned in a Get Public Login Token request

#### POST Body (Acknowledge All Alarms)

```
{
  "acknowledgeAll": true
}
```

#### POST Body (Acknowledge Specific Alarms)

```
{
  "alarmIds": [
    "88e77d49-1a99-4dd3-b36b-f3860cb26a68",
    "456ec044-6e05-4400-9bd3-b1f18a34f524"
  ]
}
```

#### POST Request Example

```
https://192.168.2.100/v2/alarms/acknowledgement
```

### 2.10.2 – Send Demand Response

Send a demand response request to Trellix.

#### HTTP Header Fields

```
POST /v2/public/exec HTTP/1.1
Authorization: <TOKEN-TYPE> <ACCESS-TOKEN>
Content-Type: application/json
Cache-Control: no-cache
```

#### POST Request Structure

```
https://<HOST-IP>:<HOST-PORT>/v2/public/exec
```

Where:

- <HOST-IP> – IP address of the Trellix Lighting API server, and defaults to 192.168.2.100
- <HOST-PORT> – IP port on the Trellix Lighting API server, optional and defaults to 443 for secure (https) connections
- <TOKEN-TYPE> – Type of authentication token (always `bearer`)
- <ACCESS-TOKEN> is the Demand Response API token returned in a Get Demand Response Token request
- <BUILDING-ID> – Case-sensitive ID of the building to which the requested network belongs
- <NETWORK-ID> – Case-sensitive ID of the network being requested

#### POST Body

```
{
  "id": "ceda5efb-4722-4ee8-b259-f198b2517018",
```

```

"event": "EXECUTE",
"action": {
  "id": "6f048fc1-b61b-41a1-82a4-1ec438c9da1c",
  "name": "Action-DemandResponse",
  "actionDecorator": {
    "id": "a0362cb5-a685-43a4-8b94-8da4c6b11293",
    "name": "demandResponse",
    "activeSignalLevel": 1
  }
},
"source": "Third Party"
}

```

### POST Request Example

```
https://192.168.2.100/v2/public/exec
```

### 2.10.3 – Set Zone Level

Send a zone level command to Trellix.

#### HTTP Header Fields

```

POST /v2/public/exec HTTP/1.1
Authorization: <TOKEN-TYPE> <ACCESS-TOKEN>
Content-Type: application/json
Cache-Control: no-cache

```

#### POST Body

```

{
  "id": "ceda5efb-4722-4ee8-b259-f198b2517018",
  "event": "EXECUTE",
  "action": {
    "id": "6f048fc1-b61b-41a1-82a4-1ec438c9da1c",
    "name": "TestAction-SetZoneLevelResponse",
    "actionDecorator": {
      "id": "a0362cb5-a685-43a4-8b94-8da4c6b11293",
      "name": "setZoneLevel",
      "publicAreaId": "<AREA-ID>",
      "zone": "<ZONE-ID>",
      "level": 10.0,
      "fadeRate": 22
    }
  }
},
"source": "Third Party"
}

```

#### POST Request Structure

```
https://<HOST-IP>:<HOST-PORT>/v2/public/exec
```

#### Where:

- <HOST-IP> – IP address of the Trellix Lighting API server, and defaults to 192.168.2.100
- <HOST-PORT> – IP port on the Trellix Lighting API server, optional and defaults to 443 for secure (https) connections
- <TOKEN-TYPE> – Type of authentication token (always `bearer`)
- <ACCESS-TOKEN> – Trellix Lighting API token returned in a Get Public Login Token request
- <BUILDING-ID> – Case-sensitive ID of the building to which the requested network belongs
- <AREA-ID> – Case-sensitive ID of the area to which the zone is assigned
- <ZONE-ID> – Case-sensitive ID of the requested zone, or "ALL"

#### GET Request Example

```
https://192.168.2.100/v2/public/exec
```

### 2.10.4 – Select Scene Level

Send a scene selection command to Trellix.

## HTTP Header Fields

```
POST /v2/public/exec HTTP/1.1
Authorization: <TOKEN-TYPE> <ACCESS-TOKEN>
Content-Type: application/json
Cache-Control: no-cache
```

## POST Body

```
{
  "id": "cb45c502-c53b-41fa-95d9-71af398ea10b",
  "event": "EXECUTE",
  "action": {
    "id": "6f048fc1-b61b-41a1-82a4-1ec438c9da1c",
    "name": "TestAction-SetSelectSceneResponse",
    "actionDecorator": {
      "id": "a0362cb5-a685-43a4-8b94-8da4c6b11293",
      "name": "selectScene",
      "publicAreaId": "<AREA-ID>",
      "publicSceneId": "<SCENE-ID>"
    }
  }
},
"source": "Third Party"
}
```

## POST Request Structure

```
https://<HOST-IP>:<HOST-PORT>/v2/public/exec
```

### Where:

- <HOST-IP> – IP address of the Trellix Lighting API server, and defaults to 192.168.2.100
- <HOST-PORT> – IP port on the Trellix Lighting API server, optional and defaults to 443 for secure (https) connections
- <TOKEN-TYPE> – Type of authentication token (always `bearer`)
- <ACCESS-TOKEN> – Trellix Lighting API token returned in a Get Public Login Token request
- <BUILDING-ID> – Case-sensitive ID of the building to which the requested network belongs
- <AREA-ID> – Case-sensitive ID of the area to which the scene is assigned
- <SCENE-ID> – Case-sensitive ID of the requested scene

## GET Request Example

```
https://192.168.2.100/v2/public/exec
```

#### FCC Statement

- This device complies with Part 15 of the FCC Rules. Operation is subject to the following two conditions:
  - (1) This device may not cause harmful interference.
  - (2) This device must accept any interference received, including interference that may cause undesired operation.

**Note:** The grantee is not responsible for any changes or modifications not expressly approved by the party responsible for compliance. Such modifications could void the user's authority to operate the equipment.

**Note:** The equipment has been tested and found to comply with the limits for a Class B digital device, pursuant to part 15 of the FCC Rules. These limits are designed to provide reasonable protection against harmful interference in a residential installation. This equipment generates uses and can radiate radio frequency energy and, if not installed and used in accordance with the instructions, may cause harmful interference to radio communications. However, there is no guarantee that interference will not occur in a particular installation. If this equipment does cause harmful interference to radio or television reception, which can be determined by turning the equipment off and on, the user is encouraged to try to correct the interference by one or more of the following measures:

- Reorient or relocate the receiving antenna.
- Increase the separation between the equipment and receiver.
- Connect the equipment into an outlet on a circuit different from that to which the receiver is connected.
- Consult the dealer or an experienced radio/TV technician for help.

This device complies with FCC radiation exposure limits set forth for an uncontrolled environment. This equipment must be installed and operated in accordance with provided instructions and the antenna(s) used for this transmitter must be installed to provide a separation distance of at least 20 cm from all persons.

---

## Warranties and Limitation of Liability

Please refer to [www.cooperlighting.com/WarrantyTerms](http://www.cooperlighting.com/WarrantyTerms) for our terms and conditions.

## Garanties et limitation de responsabilité

Veillez consulter le site [www.cooperlighting.com/WarrantyTerms](http://www.cooperlighting.com/WarrantyTerms) pour obtenir les conditions générales.

## Garantías y Limitación de Responsabilidad

Visite [www.cooperlighting.com/WarrantyTerms](http://www.cooperlighting.com/WarrantyTerms) para conocer nuestros términos y condiciones.

Discontinued  
06-02-2023

**Cooper Lighting Solutions**  
1121 Highway 74 South  
Peachtree City, GA 30269  
P: 770-486-4800  
[www.cooperlighting.com](http://www.cooperlighting.com)  
For service or technical assistance:  
1-800-553-3879

Canada Sales  
5925 McLaughlin Road  
Mississauga, Ontario L5R 1B8  
P: 905-501-3000  
F: 905-501-3172

© 2020 Cooper Lighting Solutions  
All Rights Reserved  
Printed in USA  
Publication No. MN503078EN  
May 2020

Cooper Lighting Solutions is a registered trademark.

All other trademarks are property of their respective owners.

Product availability, specifications, and compliances are subject to change without notice.

