

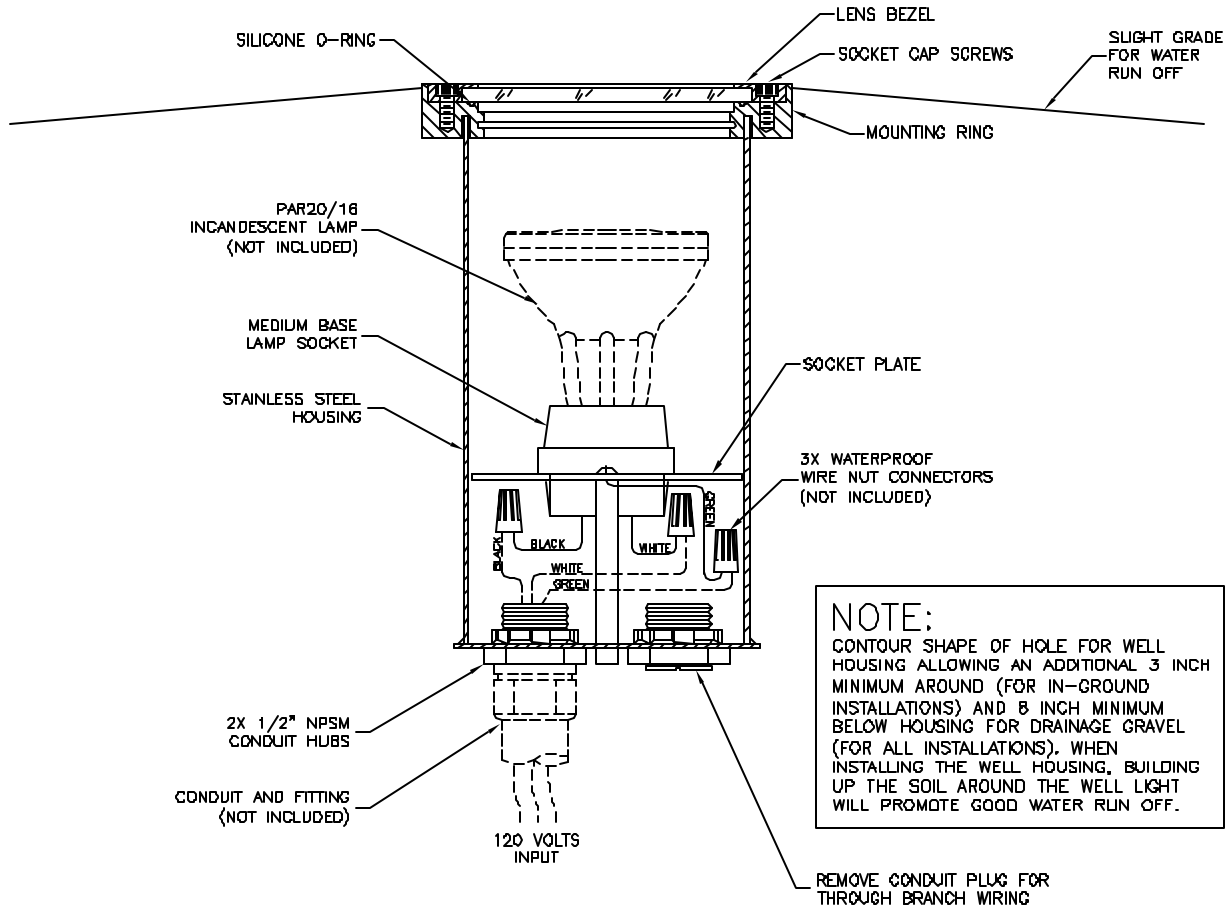


Lumière
1250 Calle Suerte
Camarillo, CA 93012-8053
PH (805) 484-7713
FAX (805) 445-7693



www.cooperlighting.com

INSTALLATION INSTRUCTIONS: 612 WELL LIGHT



NOTE:
CONTOUR SHAPE OF HOLE FOR WELL HOUSING ALLOWING AN ADDITIONAL 3 INCH MINIMUM AROUND (FOR IN-GROUND INSTALLATIONS) AND 8 INCH MINIMUM BELOW HOUSING FOR DRAINAGE GRAVEL (FOR ALL INSTALLATIONS). WHEN INSTALLING THE WELL HOUSING, BUILDING UP THE SOIL AROUND THE WELL LIGHT WILL PROMOTE GOOD WATER RUN OFF.

WARNING:
WIRING AND INSTALLATION MUST BE PERFORMED BY A QUALIFIED ELECTRICIAN ONLY. TURN POWER OFF BEFORE INITIAL INSTALLATION, SERVICING, MAINTENANCE, AND RELAMPING. FIXTURES SHOULD ALWAYS BE INSTALLED IN ACCORDANCE WITH LOCAL AND/OR NATIONAL ELECTRIC CODES. THIS IS A 120 VOLT FIXTURE. USE U.L. LISTED WATERPROOF WIRE NUT CONNECTORS CATALOG # KING-T8, MANUFACTURED BY KING TECHNOLOGY, Inc. OR EQUIVALENT.

NOTE:
THIS FIXTURE CAN BE USED FOR IN-GROUND, CONCRETE POUR, BRICK AND MASONRY INSTALLATIONS. IT IS NOT DESIGNED FOR INSTALLATION IN ANY COMBUSTIBLE MATERIALS.

INSTALLATION INSTRUCTIONS:

1. REMOVE TOP BEZEL BY LOOSENING FOUR SOCKET CAP SCREWS USING HEX ALLEN KEY (INCLUDED).
2. RUN THE CONDUIT WIRES THROUGH THE CONDUIT HUB INTO THE HOUSING. ATTACH CONDUIT AND FITTING TO THE HUB ON THE BOTTOM OF THE FIXTURE HOUSING. FEED LINE VOLTAGE SUPPLY WIRES INTO HUBS AND PUSH WIRES UP THROUGH HOLE IN LAMP SOCKET PLATE.
3. CONNECT 120V INPUT WIRES TO THE SOCKET WIRES. CONNECT BLACK TO BLACK, WHITE TO WHITE, AND GREEN (GROUND) TO GREEN, USING WATERPROOF WIRE NUT CONNECTORS (NOT INCLUDED). PUSH WIRES BELOW PLATE AND PUSH SOCKET INTO SOCKET PLATE UNTIL THE CLIPS SNAP INTO PLACE.

4. INSTALL 50 WATT MAXIMUM, PAR20 OR PAR16, INCANDESCENT LAMP INTO THE MEDIUM BASE SOCKET.
5. O-RING MUST BE SEATED PROPERLY IN PLACE AND LENS BEZEL ASSEMBLY MUST BE CLEAN FOR A PROPER SEAL.
6. REINSTALL BEZEL USING FOUR SOCKET CAP SCREWS. LENS BEZEL SCREWS SHOULD BE TORQUED TO 8 INCH LBS.
7. APPLY POWER TO THE FIXTURE TO TEST FOR PROPER OPERATION.

LAMP:
USE ONLY 120 VOLTS, PAR20 OR PAR16, 50 WATTS MAXIMUM HALOGEN OR INCANDESCENT LAMP. CHECK PACKAGE AND FIXTURE LABELING CAREFULLY FOR PROPER LAMP TYPE AND WATTAGE.

TO RELAMP:
REMOVE LENS BEZEL BY REMOVING FOUR SOCKET CAP SCREWS. THREAD PAR20 OR PAR16 (50 WATTS MAXIMUM) LAMP CLOCKWISE INTO SOCKET UNTIL FIRMLY SEATED. CLEAN THE O-RING AND O-RING GROOVE AREA TO ENSURE PROPER SEAL. REPLACE LENS BEZEL AND O-RING. SECURE WITH FOUR SOCKET CAP SCREWS USING HEX KEY (INCLUDED).

Lumière		COOPER Lighting Solutions	
DWG No.	9126	REV.	A
SHEET 1 OF 1	STOCK NO.	9126-01	