

Project		Catalog #		Type	
Prepared by		Notes		Date	



# PrentaLux

## 206

Integral LED Light Engine  
Performance Decorative

### Typical Applications

• Office • Education • Healthcare • Hospitality • Retail • National Accounts

### Interactive Menu

- Order Information [page 2](#)
- Product Specifications & Colors [page 3](#)
- Textures [page 4](#)
- Mounting [page 4](#)
- Lumen Maintenance & Photometric Data [page 5](#)
- Lumen/Wattage/LPW & UGR Data [page 5](#)



Filament only.  
See page 6



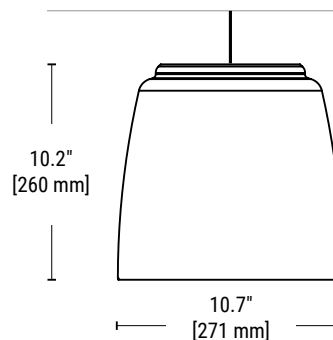
LIVING BUILDING CHALLENGE



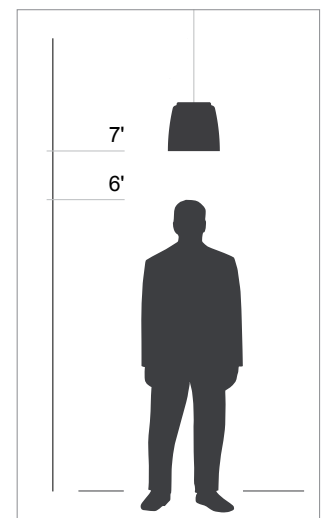
## Top Product Features

- The PrentaLux 200 series of performance decorative fixtures utilize Cooper Lighting Solutions proprietary 3D printing technology.
- Integral LED light engine with 8 Light Levels ranging from nominal 1000 to 8000+ lumens.
- 3 outer shade texture options, and 3 distinct inner shade texture options.
- 8 standard opaque outer shade color options and 3 opaque inner shade color options with additional On-Demand colors available.
- 90+ CRI standard with 4 CCT options (2700K, 3000K, 3500K, 4000K).
- Universal Voltage (120-277V).
- 0-10V integral driver with dimming from 100% to 1%.
- [Declare compliant](#).
- LBC Red List approved.
- 5-year warranty.

### Dimensions



### Scale



Order Information

SAMPLE CATALOG NUMBER: PRLX-206-935-LL5-C-U-S-GRAY-LF-WHHR-BR-DW

Domestic Preferences	Brand	Series	CRI	Light Level <sup>2</sup>	Optics, Lens
<b>[Blank]</b> = Standard <b>BAA</b> = Buy America Act	<b>PRLX</b>	<b>206</b>	<b>927</b> = 90 CRI, 2700K <b>930</b> = 90 CRI, 3000K <b>935</b> = 90 CRI, 3500K <b>940</b> = 90 CRI, 4000K	<b>LL1</b> = 1435 lms (at 3500K, 90CRI), 10W <b>LL2</b> = 2044 lms (at 3500K, 90CRI), 13W <b>LL3</b> = 2784 lms (at 3500K, 90CRI), 18W <b>LL4</b> = 3632 lms (at 3500K, 90CRI), 24W <b>LL5</b> = 5075 lms (at 3500K, 90CRI), 34W <b>LL6</b> = 5780 lms (at 3500K, 90CRI), 40W <b>LL7<sup>3</sup></b> = 7467 lms (at 3500K, 90CRI), 56W <b>LL8<sup>3</sup></b> = 8653 lms (at 3500K, 90CRI), 73W	<b>C</b> = Standard (84 deg), Clear Lens <b>F<sup>1,2</sup></b> = Standard (84 deg), Frosted Lens
1. Only product configurations with this designated prefix are built to be compliant with the Buy American Act of 1933 (BAA). Please refer to <a href="#">DOMESTIC PREFERENCES</a> website for more information. Components shipped separately may be separately analyzed under domestic preference requirements.	Notes	Notes	Notes	Notes 1. Lumen targets above are based on 90 CRI and 3500K values with Clear Lens. Use IES files for accurate calculations. 2. See Lumen Table on Page 5 for exact CCT to Lumen table values. 3. Standard Clear Lens only. Not available with Frosted Lens.	Notes 1. Frosted lens will decrease delivered lumen output. See Photometry info for details. 2. Not available with LL7 and LL8.

Continue here to make complete selections

Voltage	Dimming	Outer Shade Color <sup>1</sup>	Outer Shade Texture
<b>U</b> = Universal Voltage (120-277V)	<b>S</b> = 0-10V (dimming from 100% to 1%)	<b>Standard Opaque Outer Shade Colors:</b> <b>WHITE</b> = White <b>BLAK</b> = Black <b>GRAY</b> = Gray <b>ROSE</b> = Rose <b>CAPP</b> = Cappuccino <b>SAGE</b> = Sage <b>BRNZ</b> = Bronze <b>BRSS</b> = Brass  <b>XXXX<sup>2</sup></b> = On-Demand Color	<b>Outer Shade Textures:</b> <b>LF</b> = Layered Fine <b>NL</b> = Natural Lines <b>VF</b> = Vertical Fine  <b>XX<sup>2</sup></b> = Other Shade Texture
Notes	Notes	Notes 1. See page 3 for images of color options. 2. On-Demand colors available with possible extended lead times and additional costs. Consult factory. See page 3 for images of On-Demand color options.	Notes 1. See page 4 for texture details and options. 2. Consult factory to request other textures. Shop drawings may be required. Extended lead times, additional costs, and minimum order quantity may apply.

Continue here to make complete selections

Inner Shade Color	Inner Shade Texture	Canopy Shape and Color
<b>Standard Inner Shade Colors:</b> <b>WHHR</b> = High Reflective White <sup>1</sup> <b>BRSS</b> = Brass <b>BRNZ</b> = Bronze  <b>XXXX<sup>2</sup></b> = On-Demand Color	<b>Standard Inner Shade Textures:</b> <b>SR</b> = Layered fine texture <b>BR</b> = Baffle reflector, corrugated texture <b>FL</b> = Floral reflector, decorative texture  <b>XX<sup>3</sup></b> = Other Inner Shade Texture	<b>DW</b> = Disk - White <b>DB</b> = Disk - Black <b>DC</b> = Disk canopy matches outer shade color (opaque color only)  <b>CW</b> = Conical - White <b>CB</b> = Conical - Black <b>CC</b> = Conical canopy matches outer shade color (opaque color only)
Notes 1. High Reflective White (WHHR) should be selected for maximum light output. 2. On-Demand colors available with possible extended lead times and additional costs. Consult factory. See page 3 for images of on-demand color options.	Notes 1. See page 4 for texture details and options. 2. Consult factory to request other textures. Shop drawings may be required. Extended lead times, additional costs, and minimum order quantity may apply.	Notes 1. Standard length of cord - 10ft [3050 mm]. Max available length is 25ft [7.62 m]. Consult factory for lengths longer than 10ft. 2. Power cord is always silver.

## Product Specifications

### Construction

- PrentaLux 200s consist of an integral LED light engine and a proprietary additive manufacturing process for the polycarbonate shade and components.
- 200 series shades utilize a proprietary, impact resistant polycarbonate for maximum durability.
- The polycarbonate used for PrentaLux fixtures is bio-circular and thermally, mechanically and optically optimized for professional/commercial installations. Designed, engineered, and printed in the United States.

### Electrical

- Standard 0-10V driver (with dimming from 100% to 1%) integrated into the pendant head (120/277V/50-60Hz).

### LED & Light Engine

- Available in 2700K, 3000K, 3500K, and 4000K CCT.
- 90 CRI standard.
- 8 Lumen packages ranging from nominal 1000, 1500, 2000, 3000, 4500, 6000, 8000+ lumens. (subject to specific CCT and Light Level).

### Driver

- Standard offering is 0-10V with 1% dimming.

### Optics

- Clear or frosted lens options available.
- Polar plot and UGR data on page 5.

### Environment

- Suited for 25° ambient. Suitable for damp locations.

### Shielding

- Shade optic depth and design provides excellent physical cut off.
- 3D printing enabled personalization allows for easy adjustment of cut off angle (MOQ may apply).

### Colors & Textures

- 8 standard outer shade colors available. 3 standard inner shade colors available.
- High Reflective White inner shade color should be selected for maximum light output.
- 3 inner shade textures offered.
- On-Demand colors and textures available with possible extended lead times and additional costs. Please consult factory.

### Mounting

- Mounting options include UL certified cord and option of 3D printed disk shape or conical shape, mounting hardware.

### Lengths

- Fixture comes with 10ft cord. Lengths up to 25 ft possible. (Consult factory as longer lead times apply).

### Weight

- All products are lightweight and much easier to install than traditional pendants.
- 206 fixture weighs approximately 6.4lbs.

### Warranty

- Standard five-year limited warranty on all parts.

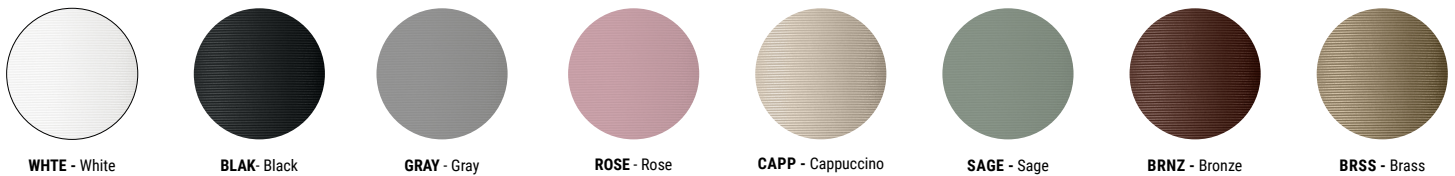
### Compliance

- Components are UL recognized and luminaires are cULus listed for 25°C ambient environments. Damp location Listed.
- Filament material is UL certified.
- BAA compliant.
- RoHS compliant.
- ISCC certified (for 3D printed materials). PrentaLux products will convert to printing our 3D parts with over 65% recycled or bio-circular materials (using an ISCC certified mass balance approach). Bio-circular materials are raw materials from ISCC Plus certified waste streams and residues including tall oils from the wood processing industry or used cooking oil from the food processing industry.
- Declare compliant, LBC Red List approved.
- Not to be installed in food prep areas and hazardous environments which may expose the product to pollutants such as oil, grease, or VOCs.
- IK02 impact rated. Not for installations in locations such as gymnasiums, arenas, sports complexes, multi-purpose rooms, and any other locations where the fixture potentially will be subject to impacts from external sources.

### Sustainability Specifications

- PrentaLux 3D printed parts are produced with at least 65% recycled or bio-circular materials (using an ISCC certified mass balance approach).
- ISCC certified. Certification applies only to 3D printed material.
- Declare compliant.
- LBC Red List approved.

## Standard Opaque Outer Shade Colors

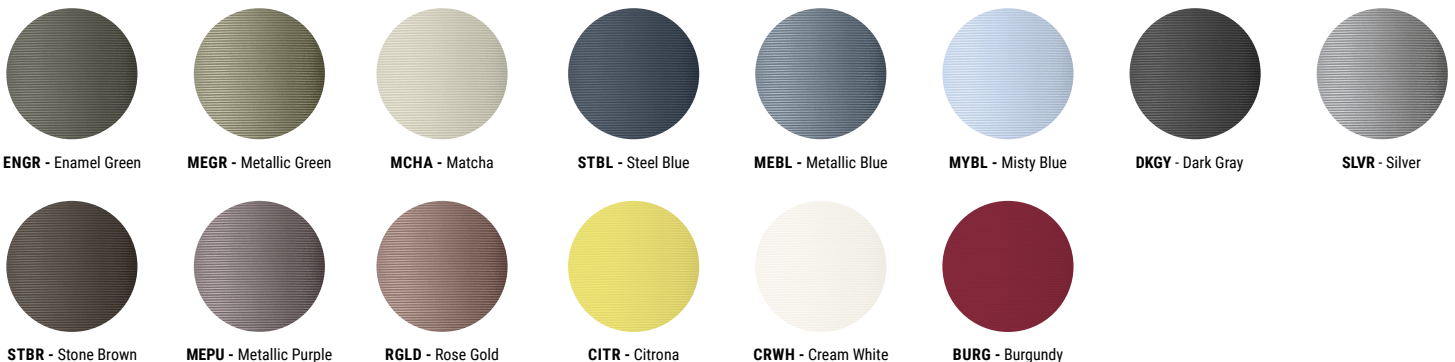


## Standard Inner Shade Colors



## On-Demand Colors

These additional color offerings for inner and outer shade may have extended lead times and/or additional costs. Please consult factory.



Outer Shade Textures



LF - Layered Fine

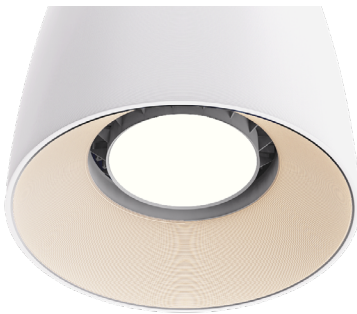


VF - Vertical Fine

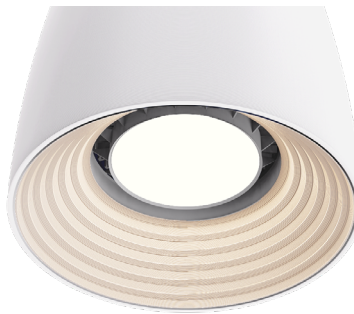


NL - Natural Lines

Inner Shade Textures



SR - Smooth

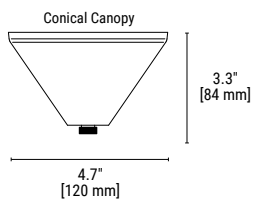
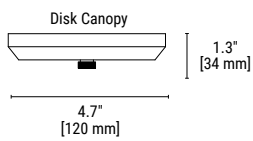


Baffle (BR)

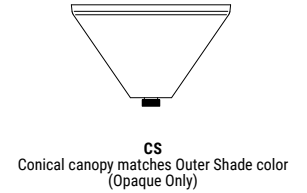
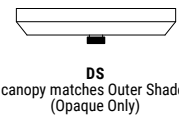


FL - Floral

Mounting - Canopy Options



Canopy Colors



Photometric Data

PRENTALUX - 206 - @ 3500K / 90 CRI WITH CLEAR LENS			
	Light Level 1	Light Level 8	
Filename	PRLX-206-935-LL1-C-U-S-X-X-WHHR-SR-X.ies	PRLX-206-935-LL8-C-U-S-X-X-WHHR-SR-X.ies	
Test No.	P879017	P879059	
Lumcat	PRLX-206-935-LL1-C-U-S-X-X-WHHR-SR-X	PRLX-206-935-LL8-C-U-S-X-X-WHHR-SR-X	
Lumens	1434.9 Lm	8652.8 Lm	
Input Watts	9.5 W	72.2 W	
Efficacy	151 Lm/W	119.8 Lm/W	
CCT	3500K	3500K	
Spacing Criteria (0/90/45)	1.21 / 1.21 / 1.37	1.21 / 1.21 / 1.37	

Lumen/Wattage/LPW Table

LUMEN Table per CRI, CCT, and Light Level			206		WATTS	EFFICACY (Lm/W) (Clear Lens)
CRI	CCT	LL	Clear	Frosted		
90	2700	LL1	1310	1241	10	137.9
		LL2	1866	1768	13	144.7
		LL3	2542	2408	18	146.1
		LL4	3316	3142	24	135.9
		LL5	4634	4391	34	137.9
		LL6	5277	5001	40	134.3
		LL7	6818	NA	56	123.1
		LL8	7900	NA	73	109.4
	3000	LL1	1389	1316	10	146.2
		LL2	1978	1875	13	153.4
		LL3	2695	2553	18	154.9
		LL4	3515	3331	24	144.1
		LL5	4913	4655	34	146.2
		LL6	5594	5301	40	142.4
		LL7	7228	NA	56	130.5
		LL8	8375	NA	73	116
	3500	LL1	1435	1360	10	151
		LL2	2044	1937	13	158.4
		LL3	2784	2638	18	160
		LL4	3632	3441	24	148.8
		LL5	5075	4809	34	151
		LL6	5780	5467	40	147.1
		LL7	7467	NA	56	134.8
		LL8	8653	NA	73	119.8
4000	LL1	1488	1410	10	156.6	
	LL2	2120	2009	13	164.3	
	LL3	2887	2736	18	165.9	
	LL4	3767	3569	24	154.4	
	LL5	5264	4988	34	156.7	
	LL6	5995	5681	40	152.5	
	LL7	7745	NA	56	139.8	
	LL8	8974	NA	73	124.3	

UGR Data Table

Light Level @ 3500K [206] Smooth Reflector Clear Lens		CCT	UGR [CIE 190:2010] (4H, 8H; Reflectance: 70% Ceiling, 50% Wall, 20% Ref. Plane)	MAX LUMINANCE [45-90 DEG FROM NADIR] (2) (CD/M^2)
			90 CRI	90 CRI
LL1	1435	3500K	19.8	10473
LL2	2044	3500K	21.0	14916
LL3	2784	3500K	22.1	20315
LL4	3632	3500K	23.0	26505
LL5	5075	3500K	24.2	37041
LL6	5780	3500K	24.6	42183
LL7	7467	3500K	25.5	54496
LL8	8653	3500K	22.3	63148

Light Level @ 3500K [206] Smooth Reflector Frosted Lens		CCT	UGR [CIE 190:2010] (4H, 8H; Reflectance: 70% Ceiling, 50% Wall, 20% Ref. Plane)	MAX LUMINANCE [45-90 DEG FROM NADIR] (2) (CD/M^2)
			90 CRI	90 CRI
LL1	1360	3500K	20.5	8483
LL2	1937	3500K	21.7	12708
LL3	2638	3500K	22.8	6926
LL4	3441	3500K	20.0	9036
LL5	4809	3500K	21.2	12627
LL6	5467	3500K	21.6	14381

Lumen Maintenance

Ambient Temperature
25°C
Lumen Maintenance: TM-21-11 (60,000 Hours)
>80%
Theoretical L70 (Hrs)
>=66,000