



HALO Commercial

HCD Pro Direct Mount System

Technical Sales Guide

4", 6" & 8" Round & Square

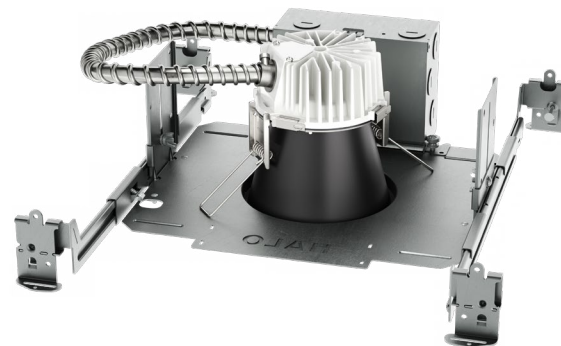
LED Downlights and Wall Washers

HALO Commercial

HCD Professional Direct Mount Commercial Downlighting System

4"/6"/8" • Round/Square • Downlight/Wall Wash

The HCD System offers total flexibility as a modular downlighting system built on a series of factory preset or Selectable (Lumen/CCT) LED Fixture Kits that easily interchange with a complete fleet of reflectors. Available in both rounds and squares, in multiple sizes and beam distributions. HCD installs-from-below and mounts securely to any retrofit/remodel/new construction ceiling.



Top Product Features

- 4", 6", and 8" install-from-below retrofit/remodel or mounting frames for new construction
- All HCD LED Fixture Kits accommodate any size, shape, or distribution HCD reflector
- Factory Preset or Field-Selectable Lumens: 500 to 5000 lms (nominal)
- Factory Preset or 5-color Field-Selectable CCT: 2700K, 3000K, 3500K, 4000K, 5000K; 90 CRI
- Distributions: Precision-formed round (●) and square (■) reflectors:
 - Medium (●/■)
 - Wide (●)
 - Narrow (● - match HC Series)
- Field-installed wall wash distribution lens kit available
- **Finishes:** Specular, Haze (Semi-Specular), Matte White (paintable), and Matte Black reflectors
- **Dimming:** 0-10V down to 1% (dim-to-off with WaveLinX) in UNV 120–277V; 347V (Canada)
- Emergency battery backup, WaveLinX Wireless PRO/LITE, and Chicago Plenum options available
- Wet location-listed; ENERGY STAR® certified (reference Certified Light Fixture Database for listings)
- L80 at 60,000 hours (80% lumen maintenance at 60,000 hours)
- 5-year warranty

Interactive Menu

- [Fixture Kit Overview - page 3](#)
- [Reflector Overview - page 5](#)
- [New Construction Mounting Frame - page 6](#)

Specification Sheets

- [HCD 4-inch Round spec sheet](#)
- [HCD 4-inch Square spec sheet](#)
- [HCD 6-inch Round spec sheet](#)
- [HCD 6-inch Square spec sheet](#)
- [HCD 8-inch Round spec sheet](#)
- [HCD 8-inch Square spec sheet](#)

Product Certification*



Product Features



Control Compatibility



*T24 and RoHS are self-tested by Cooper Lighting Solutions. Not a third party certification.

Fixture Kits Overview

HCD LED Fixture Kits fit any 4", 6", or 8", round/square HCD reflector and direct mount to the finished ceiling. HCD Fixture Kits also offer Lumen and CCT Selectability with factory preset versions also available. Select from multiple Fixture Kit configurations including the Standard, Quick Connect, Emergency, WaveLinx, and Chicago Plenum.

- Order LED Fixture Kits and Reflectors separately.
- (Mounting Frames available separately for New Construction installations)
- Easily and securely attach to reflectors with 3 toolless slide locks.
- Downlight installs-from-below through ceiling cutout and securely mounts with springs on the reflector holding the downlight in place

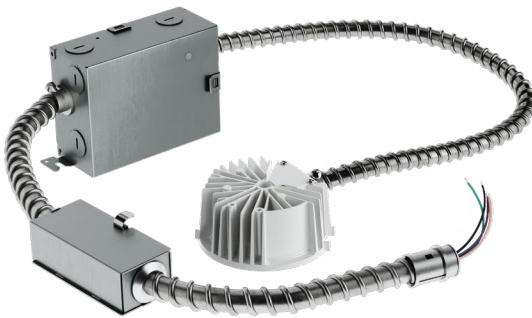
Junction Box Fixture Kit



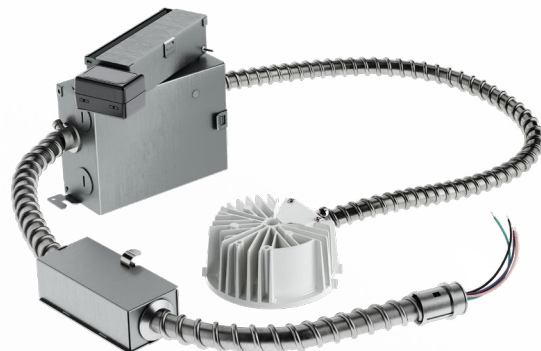
Chicago Plenum Fixture Kit



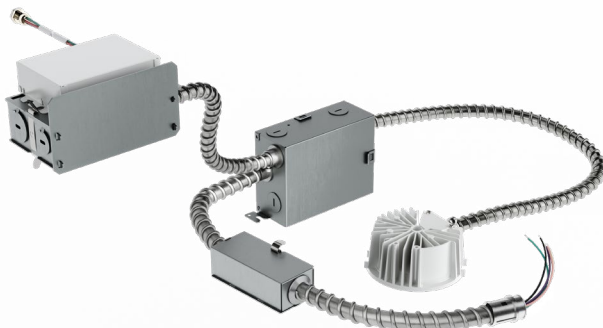
Quick Connect Fixture Kit



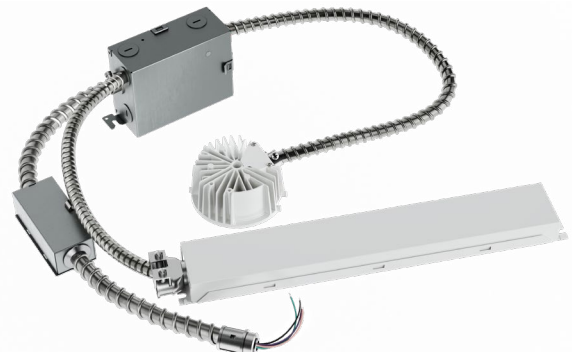
WaveLinx Wireless Fixture Kit



Emergency Quick Connect Fixture Kits



EM06 - 6 Watt



EM14 - 14 Watt

Fixture Kits Overview

Junction Box fixture kits shown with reflectors for example only, order reflectors and fixture kits separately.



Junction Box Fixture Kit with 4" Round Reflector
Ceiling Cutout: 4.75" Retrofit / 5.00" New
[HCD 4-inch Round spec sheet](#)



Junction Box Fixture Kit with 6" Round Reflector
Ceiling Cutout: 6.375" Retrofit & New
[HCD 6-inch Round spec sheet](#)



Junction Box Fixture Kit with 8" Round Reflector
Ceiling Cutout: 8.25" Retrofit & New
[HCD 8-inch Round spec sheet](#)



Junction Box Fixture Kit with 4" Square Reflector
Ceiling Cutout: 5.00" Retrofit / 5.125" New
[HCD 4-inch Square spec sheet](#)



Junction Box Fixture Kit with 6" Square Reflector
Ceiling Cutout: 6.625" Retrofit / 6.75" New
[HCD 6-inch Square spec sheet](#)



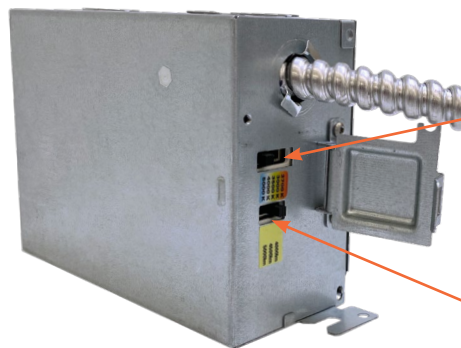
Junction Box Fixture Kit with 8" Square Reflector
Ceiling Cutout: 8.50" Retrofit / 8.625" New
[HCD 8-inch Square spec sheet](#)

Lumen & CCT Switches

Fixture Kits can be ordered **Lumen and CCT Selectable** or **Factory Preset Lumen/CCT**

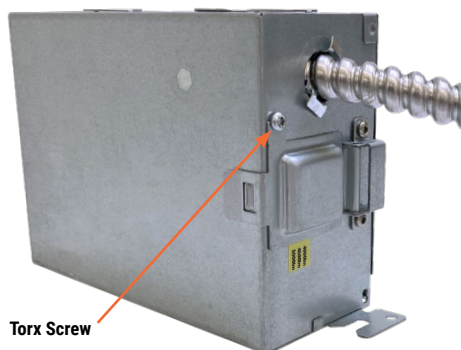
Selectable Fixture Kits

A hinged snap-latch cover allows for quick access to the Lumen and CCT selector switches while also protecting against accidental adjustments.



Factory Preset Lumen/CCT Fixture Kits

These kits ship factory set under a fixed cover and labeled at their defined lumen and CCT levels.



Reflectors Overview

Pair LED Fixture Kit with any HCD Reflector.

- Order reflectors and fixture kits separately
- Downlight installs-from-below through ceiling cutout and securely mounts with springs on the reflector holding the downlight in place
- All reflectors available in Specular, Haze (Semi-specular), Matte White (paintable), or Matte Black
- Reflectors come in 3 distributions: Medium, Wide, and Narrow.

The direct-mount installation method requires a precise ceiling cut-out for secure reflector and fixture kit retention, see ceiling cutout table in reflector ordering section.

Medium Distribution Reflectors

4"/6"/8" • Round/Square

- 4", 6", 8" round and square self-flanged, medium reflectors fit any LED Fixture Kit
- Medium reflectors feature medium 1.0 spacing criteria (SC) and 55° cutoff (nominal, field results may vary by aperture and finish)
- Field-installed rotatable spread lensed wall wash accessory kits available for round & square (sold separately)
- Oversized "Goof" Rings available separately for medium reflectors



Wide-Shallow Distribution Reflectors

4"/6"/8" • Round

- 4", 6", 8" round self-flanged, ultra-shallow wide distribution reflectors fit any LED Fixture Kit
- Shallow reflector depth for reduced plenum height installations
- Wide distribution features 1.28 spacing criteria and 65° cutoff (nominal, field results may vary by aperture and finish)
- Field-installed round rotatable spread lensed wall-wash accessory kits available (separately)



Narrow Distribution Reflectors

4"/6"/8" • Round

- 4", 6", 8" round self-flanged, narrow distribution reflectors fit any fixture kit
- Narrow distribution reflectors equivalent with HC Series optical aperture, regression, and flange dimensions (HC4 – 41x; HC6 – 61x; HC8 – 81x)
- Narrow reflectors feature 0.7 spacing criteria and 50° cutoff (nominal values, field results may vary by aperture and finish)
- Field-installed round rotatable spread lensed wall-wash accessory kits available (separately)



New Construction Mounting Frames Overview

The HCD System is engineered for effortless remodel/retrofit applications and is ideal for new construction applications when used with an HCD New Construction Mounting Frame.

- Available in Round or Square
- 3/8" drywall/plaster collar for easy locating and cutting
- Adjustable bar hangers for T-grid or wood-framed ceilings
- Round aperture cutouts sized for industry-standard hole saws

Nominal Aperture	Catalog Series	Round Cutout (std. hole saw)	Square Cutout	Minimum Grid / Framing Width	Maximum Grid / Framing Width
4" Mounting Frames	HCD4MF	4.75" Retrofit 5.00" New	5.00" Retrofit 5.125" New	10.5"	24.5"
6" Mounting Frames	HCD6MF	6.375" Retrofit & New	6.625" Retrofit 6.750" New		
8" Mounting Frames	HCD8MF	8.25" Retrofit & New	8.500" Retrofit 8.625" New		

Basic Mounting Frames (No junction box)



Mounting Frame only, no junction box

- HCD4MFR, HCD4MFS = 4" Round or Square frames
- HCD6MFR, HCD6MFS = 6" Round or Square frames
- HCD8MFR, HCD8MFS = 8" Round or Square frames

Compatible Fixture Kits

- HCDJB Junction Box Fixture Kits
(Installer supplies mains wiring & connections)

Junction Box Mounting Frames



Mounting Frame w/ Junction Box Only

- HCD4MFRJB, HCD4MFSJB = 4" Round, Square frame
- HCD6MFRJB, HCD6MFSJB = 6" Round, Square frame
- HCD8MFRJB, HCD8MFSJB = 8" Round, Square frame

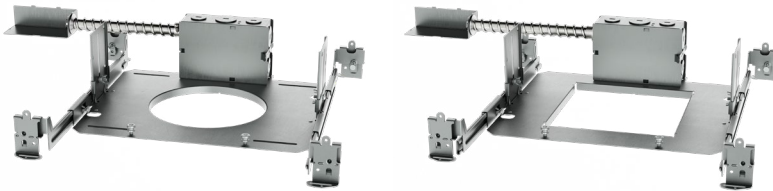
Compatible Fixture Kits

- HCDJB Junction Box Fixture Kits
(Installer supplies mains wiring and connections)
- HCDQC Quick Connect fixture kits with quick connect & snap-in mains whip
- HCDE Emergency fixture kits with EM quick connect & snap-in mains whip*
- HCDW WaveLinx fixture kits with Wireless Node, quick connect & snap-in mains whip*

*Minimum plenum height 7.25" (2x8) with 24" grid/framing width for all Emergency and WaveLinx fixture kits.

Overview – New Construction Mounting Frames

Quick Connect Mounting Frames



Mounting Frame w/ 5-conductor Quick-Connect

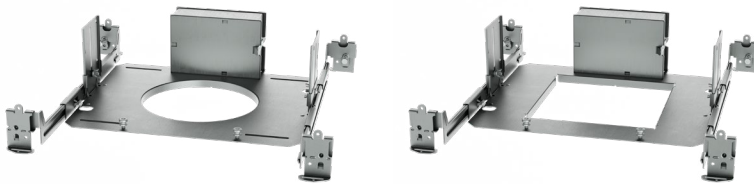
- HCD4MFRQC, HCD4MFSQC = 4" Round, Square frame
- HCD6MFRQC, HCD6MFSQC = 6" Round, Square frame
- HCD8MFRQC, HCD8MFSQC = 8" Round, Square frame

Compatible Fixture Kits

- HCDQC Quick connect fixture kits with quick connect & snap-in mains whip
- HCDW WaveLinx fixture kits with Wireless Node, quick connect & snap-in mains whip*
- HCDE Emergency fixture kits with EM quick connect & snap-in mains whip*

*Minimum plenum height 7.25" (2x8) with 24" grid/framing width for all Emergency and WaveLinx fixture kits.

Chicago Plenum Mounting Frames



Mounting Frame w/ CCEA compliant Chicago Plenum Junction Box

- HCD4MFRCP, HCD4MFSCP = 4" Round, Square frame
- HCD6MFRCP, HCD6MFSCP = 6" Round, Square frame
- HCD8MFRCP, HCD8MFSCP = 8" Round, Square frame

Compatible Fixture Kits

- HCDCP Chicago Plenum fixture kits, CCEA compliant
- Chicago Plenum conduit/conduit connectors by installer, recommend 26" long*

*Minimum plenum height 7.25" (2x8) with 24" grid/framing width for all Chicago Plenum fixture kits.

