

# Metalux

Selectable Lumen and  
CCT Products



**Field selectable technology** empowers you to take control. Go selectable to choose your way, every time. Adjust color temperatures (CCT) and lumen outputs with the flip of a switch!



# Why Selectable?

## Distributor Benefits

- Simplify stock needed
- Less shelf space required
- Working capital reductions
- Product availability



## Contractor Benefits

- Install less fixture types per job to save time and money
- Less back and forth with the customer increasing service efficiency
- Eliminate call backs or make easy changes if the customer requires. No Electrician required to change the color or lumens - conveniently located on top.



# Flexibility at Your Fingertips

Multiple Light Choices, One Fixture.



## SELECTABLE COLORS (CCT)

Choose from a wide range of color temperatures to set the ideal lighting scene.

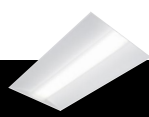


## SELECTABLE LUMENS

Select between the preset lumen outputs to create your optimal lighting experience.



ARS  
Pg 2



CZS  
Pg 3



CZSB-S  
Pg 4



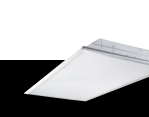
CGTS  
Pg 5



FPS  
Pg 6



SRC-S  
Pg 7



GRSCT3  
Pg 8



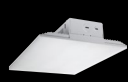
SNX  
Pg 9



SLSTP  
Pg 10



ST  
Pg 11



LHBS  
Pg 12



SPHB  
Pg 13



UHBS  
Pg 14



APVTS  
Pg 15



VT3S  
Pg 16



AWS  
Pg 17



NWS  
Pg 18



RBG  
Pg 19

Click for page

Click for page

Metalux

# ARS Achieva Selectable LED Center Basket



The Achieva™ Recessed Selectable center basket offers selectable lumen output and color temperature with a simple, easy to access toggle switch. The ultra slim 1.5" design fits into the shallowest of plenums and offers an upgraded center basket aesthetic. Constructed with Cooper Lighting's latest selectable technology platform, the Achieva delivers unprecedented light level and CCT flexibility, energy savings, slim housing design, and sustainable packaging options.



Click on product to learn more

## Product Benefits

- Selectable lumens and CCT for design and stock friendly applications
- Selectable CCT in 3500K, 4000K, 5000K in >80 CRI
- Selectable lumens in low, medium, and high up to 8,000 lumens with standard and HO selectable options
- Shallow 1.5" housing stays below the T-grid height for shallow plenum designs
- Single Carton or Multi-pack options for less onsite waste

## Certifications and Ratings



## Applications

Office • Education • Healthcare • Retail

Metalux

# CZS

## Cruze ST Selectable LED Troffer

The Cruze™ Selectable troffer offers selectable lumen output and color temperature with a simple, easy to access toggle switch. The latch-less design, matte white paint and multiple lens options deliver architectural appeal and specification rich features. Cruze Selectable is an ideal choice for offices, schools, hospitals, and retail merchandising areas.

Click on product to learn more



### Product Benefits

- Selectable CCT in 3000K, 3500K, 4000K in >80 CRI
- Selectable lumens in Low, Medium, and High up to 6,500 lumens
- Ideal for replacing 2-4 lamp fluorescent troffers
- 0-10V dimming with 120-277V (UNV) standard
- Suitable for recessed, surface, or suspension mounting
- DLC Compliant and UL Damp rated with a 5 year warranty
- Latch-less design provides clean architectural look and feel



### Applications

Office • Education • Healthcare • Retail

### Certifications and Ratings



Metalux

# CZSB-S

## Cruze SB Selectable Troffer



The CZSB Selectable offers below the plenum access to the LED, driver and CCT and lumen select switches. Choose from curved or square lens to enhance and refresh your space. Use the CZSB-S in any general-purpose lighting application, providing project and stock flexibility to take orders and deliver quickly. Use the CZSB Selectable in offices, schools, hospital and retail spaces.



Click on product to learn more



### Product Benefits

- Selectable CCT in 3000K, 3500K, 4000K in >80 CRI
- Selectable lumens – Low, Medium, and High up to 6,400 lumens
- Door-frame assembly for easy room-side maintenance and install
- Curved and square lens options for an upgraded look and efficacy up to 146 LPW
- Integrated sensor systems for additional energy savings
- DLC Compliant efficacy up to 146 LPW and 5-year warranty

### Certifications and Ratings



### Applications

Office • Education • Healthcare • Hospitality • Retail

Metalux

# CGTS

## Lumen and CCT Select LED Panel

The contractor go-to selectable panel providing customers an affordable panel that fits in shallow plenums with room to spare. Three selectable lumen levels (high, medium, low) and three selectable color temperatures (3500K, 4000K, 5000K) are available using simple switches on the fixture. Use CGTS for commercial office spaces, schools, healthcare, and retail merchandising areas.

Click on product to learn more



### Product Benefits

- 2-1/8" overall fixture height so fits in shallow plenums with room to spare
- Acrylic micro-optics provide uniform illumination from corner to corner
- Back-lit, durable design provides immediate opportunities to replace fluorescent fixtures with an LED solution
- Mounting flexibility for multiple applications with recessed grid, hard ceiling, surface, and suspended options available



### Applications

Office • Education • Healthcare • Retail

### Certifications and Ratings



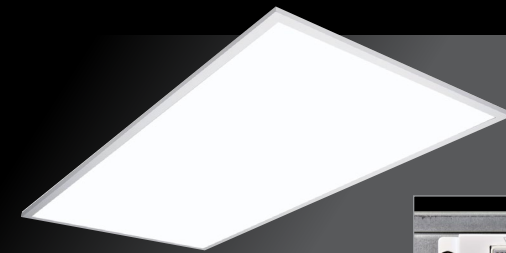
Metalux

# FPS

## Lumen and CCT Select LED Panel



This edge lit selectable panel provides the high performance and aesthetic appeal of a flat panel while also providing the flexibility to adapt to the changing needs of a space, setting, or environment. Two large switches enable three selectable lumen levels (high, medium, low) and three selectable color temperatures (3000K, 3500K, and 4000K). FPS is an excellent lighting solution for commercial office spaces, schools, healthcare and retail merchandising areas.



Click on product to learn more



### Product Benefits

- Ultra thin approx. 2 inch fixture height so fits in shallow plenums with room to spare
- Integral clips come standard so faster installation speed
- Edge lit design provides immediate opportunities to replace fluorescent fixtures with an LED solution
- Mounting flexibility for multiple applications with recessed grid, hard ceiling, surface, and suspended options available

### Certifications and Ratings



### Applications

Office • Education • Healthcare • Retail

Metalux

# SRC-S

## SkyRidge Selectable Spec Grade Troffer

The SRC Selectable offers selectable CCT and lumen with a single easy to access toggle switch. The unique design and lightguide technology deliver architectural appeal and specification features. Use the SRC Selectable in offices, schools and retail spaces.

Click on product to learn more



### Product Benefits

- Selectable CCT in 3000K, 4000K, 5000K in >80 CRI
- Selectable lumens – Low, Medium, and High up to 6,700 lumens
- Advanced optical control with optimal illumination
- High performance efficacy up to 151 lumens per watt
- Over 60% energy savings when compared to a fluorescent troffers
- DLC Compliant efficacy and 5-year warranty



### Applications

Office • Education • Healthcare • Retail

### Certifications and Ratings





Metalux

# GRSCT3

## GRLED Selectable Troffer



The GRLED Selectable offers below the plenum access to the LED, driver and CCT and lumen select switches.. With multiple lens options, GRLED Selectable works in any general-purpose lighting application, providing project and stock flexibility to take orders and deliver quickly. Use the GRLED Selectable in offices, schools, retail and residential spaces.



Click on product to learn more



### Product Benefits

- Selectable CCT in 3000K, 3500K, 4000K in >80 CRI
- Selectable lumens – Low, Medium, and High up to 7,000 lumens
- Door-frame lens assembly for easy room-side access
- Easy installation and maintenance
- Replaces up to 4-lamp fluorescent troffers
- 0-10V dimming with 120-277V (UNV) standard
- DLC Compliant with 5-year warranty

### Certifications and Ratings



### Applications

Office • Education • Healthcare • Retail

Metalux

# SNX

## Lumen and CCT Select LED Configurable Strip

A versatile, high-performance selectable linear commercial LED striplight series with breakthrough fixture efficacy, multiple distributions and numerous configurations. The SNX provides application flexibility with selectable lumens and CCT. The SNX is suitable for general area lighting, storage/utility areas, coves, shops, task, high bay and low bay lighting applications.

Click on product to learn more



### Product Benefits

- 2', 4' and 8' lengths with single continuous lens for design flexibility
- Flat, round and square lens options for design and application flexibility
- General, narrow and wide distributions options to address various mounting heights and applications
- Integrated sensor available for code compliance and IoT value-added applications



### Applications

Warehouse • Manufacturing • Retail

### Certifications and Ratings





Metalux

# SLSTP

Lumen and CCT Select LED Strip

Commercial grade LED strip that balances performance, aesthetics, and cost. It is available in 2', 4' or 8' lengths with 3500K, 4000K or 5000K selectable CCT options and selectable lumens up to 12,000 lumens of light output. SLSTP is ideal for warehouse, retail, office or retrofit applications making them the ideal choice for stock and design build opportunities.



Click on product to learn more



## Product Benefits

- 2', 4' and 8' lengths with single continuous lens (all lengths) for design flexibility
- Easy access selectable switches on the outside of the fixture for simple in field adjustment
- Frosted lens with linear prisms for uniform light distribution and wide area coverage

## Certifications and Ratings



## Applications

Warehouse • Retail • Office

Metalux

# ST

## CCT Select LED Strip

LED selectable strip that features 0-10V dimming and 3500K, 4000K, and 5000K CCT selectable options. Use the ST to replace fluorescent strip lights for increased energy savings and rebates. The ST is the ideal strip light for commercial, industrial, retail, and residential applications.

Click on product to learn more



### Product Benefits

- Tool-less channel cover, integrated LEDs and wireless access from below for simple installation and maintenance
- Surface, chain or toggle mount for new construction or retrofit
- Classic single or double lens tube appearance for one for one replacement of 2 or 4 lamp LFL strips



### Applications

Warehouse • Retail • Office

### Certifications and Ratings



Metalux

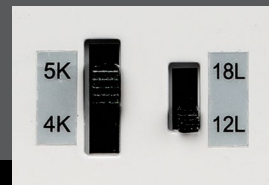
# LHBS Lumen and CCT Select Lensed High Bay



The LHBS is a LED lensed high bay luminaire designed for multiple industrial applications. The compact diecast form factor makes the LHBS both durable and easy to install. The LHBS comes standard with an optical lens, delivering optimal performance, reducing high angle glare, while protecting the LEDs. Use the lumen and CCT select LHBS for manufacturing, retail, warehouse, and gymnasium applications.



Click on product to learn more



## Product Benefits

- Lumen and CCT Select enables application flexibility and lower inventory costs for distributors
- Compact die cast housing makes LHBS both durable and easy to install
- Optional wire guards, sensors and emergency battery available to meet all project requirements
- Choose lumens ranging from 12,000 up to 36,000 lumens
- Customize your space by choosing 4000 or 5000K CCT

## Certifications and Ratings



## Applications

Warehouse • Manufacturing • Gymnasium • Retail

Metalux

# SPHB

## Lumen Select LED High Bay

A compact, dual lensed high bay with lumen and CCT select features. Sensor ready, the SPHB delivers 12,000, 18,000, and 24,000 lumens in one single housing, making inventory complexity a thing of the past. In addition, the SPHB also offers up to 36,000 lumens for those higher mounting applications. The dual lensing with superior optical control delivers optimal performance while reducing high angle glare.

Click on product to learn more



### Product Benefits

- Inventory complexity - one fixture replaces 12 different configurations
- Sensor ready for easy, off-the-shelf field installation
- Dual functioning, high impact polycarbonate lens protects the LEDs while delivering optimal performance
- Compact design for easy, one-person install



### Applications

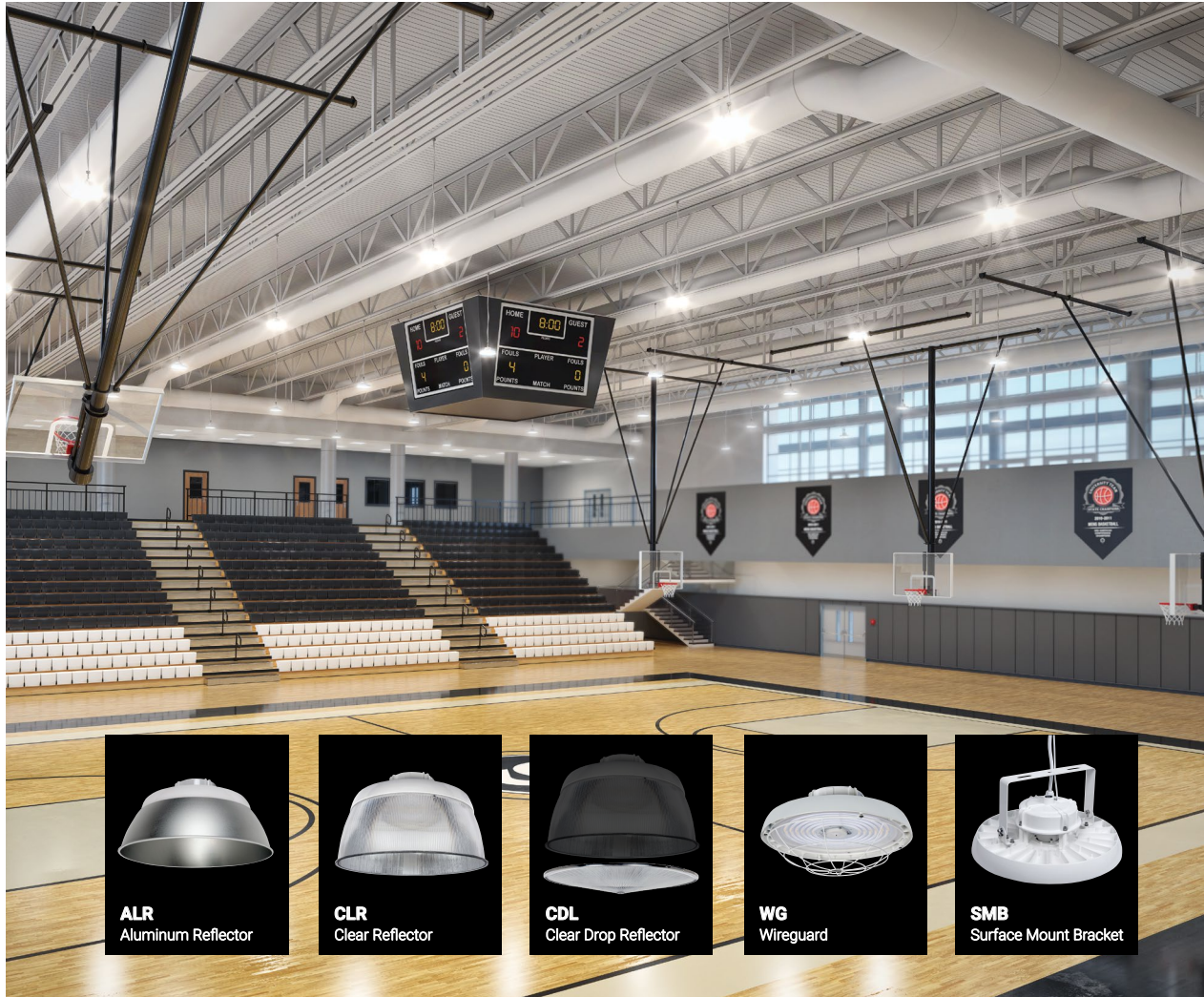
Industrial • Commercial • Retail • Manufacturing •  
Gymnasium • Multi-purpose • Grocery •  
High Bay/Low Bay Applications

### Certifications and Ratings



Metalux

# UHBS Lumen and CCT Select LED Round High Bay



Selectable and sensor ready LED round high bay luminaire designed for a variety of mounting heights and customer applications. Available with multi-volt power input with selectable color at 4000K and 5000K CCT and selectable lumens up to 36,000 lumens. UHBS is ideal for manufacturing, retail, warehouse, and gymnasium applications.



## Product Benefits

- Available in Commercial White or Industrial Black
- Specialty designed lens provides optimal distribution and reduces high angle glare
- Universal mounting hook allows for quick retrofit installations
- IP65 rated, NEMA 4X for complex environments
- Rated up to 50C ambient
- Sensor Ready with optional twist on, field installable sensor



## Certifications and Ratings



## Applications

Warehouse • Manufacturing • Retail

Metalux

# APVTS

Lumen and CCT Select LED Vaportite

The APVTS Series combines the rugged, wet location rated construction of a vaportite with selectable CCT and lumen output. The APVTS's optical performance is ideal for interior and exterior applications including canopy, storage manufacturing and parking garages.

Click on product to learn more



## Product Benefits

- Three color temperature and lumen select provide application versatility
- Impact-resistant durability using IK08 lens diffuser, housing and stainless steel latches
- Faster install and easy maintenance using new two-piece captive lens, electrical and housing design
- Standard 0-10V dimming to 10% for more energy savings
- Available in 4ft and 8ft models for more job and layout flexibility
- IP65 and UL Wet location listed for indoor and outdoor environments



## Applications

Industrial • Manufacturing • Gymnasium • Warehouse • Parking

## Certifications and Ratings





Metalux

# VT3S

## VT3 Vaportite Selectable



The VT3 Selectable is a configurable industrial vaportite with a sealed and gasketed, reinforced fiberglass housing with a high impact diffuser. The VT3S offers selectable CCT and lumen with a single easy to access toggle switch. Use the VT3S for interior and exterior applications including parking garages, food processing, canopy, manufacturing and complex environments.



[Click on product to learn more](#)

### Product Benefits

- Selectable CCT in 3000/3500/4000K in >80 CRI
- Selectable lumens – Low, Medium, and High up to 6,500 lumens
- Precision optics in general, wide, or parking garage distribution
- High Impact IK10 Polycarbonate lens option
- Wet Location, IP65-66-67-69 Listed
- NSF International certified for NSF/ANSI Standard 2 – Food Equipment
- DLC Compliant efficacy and 5-year warranty

### Certifications and Ratings



### Applications

Parking • Cold Storage • Manufacturing • Warehouse • Canopy • Food Processing • Complex Environments

Metalux

# AWS/AWWS

## Achieva Selectable LED Wrap

Selectable and versatile commercial grade wrap solution suitable for ceiling, wall, or suspension mounting. The Achieva Wrap Selectable is offered in 2', 4', and 8' lengths along with selectable color options of 3500K, 4000K, or 5000K or 3000K, 3500K, and 4000K. The AWS also offers selectable lumen options, with up to 13,000 lumens, for a wide range of retrofit applications. Offered in both 80 and 90 CRI, the Achieva delivers flexible high performance lighting for stairwells, corridors, and low bay industrial spaces.

Click on product to learn more



### Product Benefits

- Selectable CCT and selectable lumens in standard or HO lumen options
- Narrow 5.5" or Wide 10" polycarbonate IK06 rated lens in 2', 4', or 8' lengths
- Up to 165 lm/w efficiency, ideal for replacing up to 4 lamp fluorescent wraparounds and low-bay linear fluorescents
- 0-10V dimming to 5%, or sensor options available
- Suitable for ceiling, wall, or suspension mounting and row mounting
- Offered in both 90 CRI and 80 CRI color quality as well as options to meet CA Title 24 requirements



### Applications

Offices • Education • Healthcare • Retail

### Certifications and Ratings



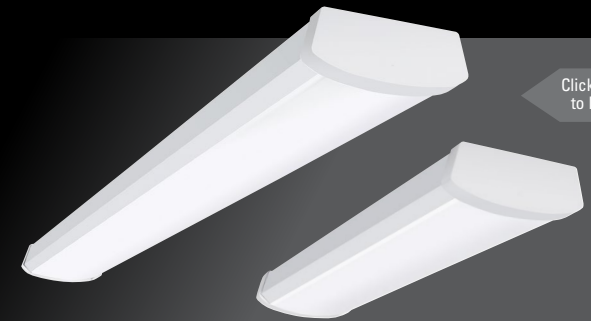
Metalux

# NWS

Lumen and CCT Select LED Wrap



Selectable commercial grade wrap solution suitable for ceiling, wall, or suspension mounting. NWS is offered in both 2' and 4' lengths along with selectable color options of 3500K, 4000K, or 5000K and selectable light output with up to 5,000 lumens. NWS is designed to provide soft diffused lines of light in corridors, hallways, stairwells, in addition to other ambient office, education, and healthcare spaces.



Click on product to learn more

## Product Benefits

- 2' and 4' lengths with single embossed knockouts for easy continuous row installation
- Modern sleek design with frosted lens blends into any ceiling design
- Selectable switches located inside the housing for easy access when installing
- Selectable integrated microwave sensor option allows for local code compliance and enhanced energy savings

## Certifications and Ratings



## Applications

Offices • Education • Healthcare • Retail

# Metalux RBG

## Lumen and CCT Select LED Slot

This selectable slot fixture can be strategically placed throughout the space to create pleasing illumination and appealing topology in rows or individual placement. A selectable switch comes standard with three selectable lumen levels (High, Medium, Low) and three selectable color temperatures (3000k, 3500k, 4000k). Customer applications include open and traditional offices, classrooms, coves, corridors, and retail.

Click on product to learn more



### Product Benefits

- 4" aperture, 6" grid width providing sleek lines of light
- IP40 rated so tightly sealed lens with no gaps to prevent bugs or debris
- Mounting flexibility for multiple applications with recessed grid, hard ceiling, surface, and suspended options available
- Integrated sensors for IoT connectivity and code compliance are available
- Switch tamper cover included to lock in settings if desired



### Applications

Office • Education • Retail

### Certifications and Ratings





### **Lighting Brands**

Ametrix  
AtLite  
Corelite  
Ephesus  
Fail-Safe  
HALO  
HALO Commercial  
Invue  
iO  
Iris  
Lumark  
LumarkAP  
Lumière  
McGraw-Edison  
Metalux  
MWS  
NeoRay  
Portfolio  
PrentaLux - 3D Printed Lighting  
RSA  
Shaper  
Streetworks  
Sure-Lites

### **Controls Brands**

Greengate  
Fifth Light  
Intelligent Lighting Controls

### **Connected Lighting Systems and Smart Spaces Platform**

WaveLinx  
Trellix Infrastructure



**Cooper Lighting Solutions**  
1121 Highway 74 South  
Peachtree City, GA 30269  
P: 770-486-4800  
[www.cooperlighting.com](http://www.cooperlighting.com)

Canada Sales  
5925 McLaughlin Road  
Mississauga, Ontario L5R 1B8  
P: 905-501-3000  
F: 905-501-3172

© 2024 Cooper Lighting Solutions  
All Rights Reserved  
Printed in USA  
Publication No. BR51968022  
March 25, 2024 8:01 AM

Cooper Lighting Solutions is a registered trademark.

All other trademarks are property of their respective owners.

Product availability, specifications, and compliances are subject to change without notice.