

**Industrial Vaportite LED**

APVT / VT2 / VT3 / VT4S / VT4

**Metalux**



# Industrial Vaportite LED

**Metalux** For over 50 years, the trusted indoor lighting solution partner for contractors and specifiers setting the quality and reliability that customers demand for every job. We provide our customers exceptional value by reducing costs and energy while improving productivity.

Click to go to section

**Parking Garage** Pg. 5

**Complex Environments** Pg. 9

**Food Processing/Manufacturing** Pg. 13

**Warehouse** Pg. 17

**Canopy** Pg. 21



# Metalux

Vaportite LED comparison

Click to go to section

Pg. 19



Pg. 15



Pg. 3



Pg. 11



Pg. 7



		APVT-S	VT2	VT3	VT4S	VT4
<b>APPLICABILITY<sup>1</sup></b>	<b>Canopy</b>	★★	★★	★★		
	<b>Storage</b>	★★★	★★★	★★		
	<b>Parking Garage</b>	★★	★★	★★★		
	<b>Warehouse</b>	★★	★★★	★★★	★	★
	<b>Food Processing</b>	★★	★★	★★★	★★	★★
	<b>Manufacturing</b>		★★	★★	★★★	★★★
	<b>Complex Environments</b>		★	★★★	★★★	★★★
<b>FEATURES / PERFORMANCE</b>	<b>Lumen Range</b>	3,000 - 11,600	2,000 - 22,000	2,000 - 8,000	9,000 - 18,000	9,000 - 30,000
	<b>Selectable</b>	 Lumens / CCT 	N/A	 Lumens / CCT 	N/A	N/A
	<b>Efficacy (Max)</b>	151 lm/W	150 lm/W	154 lm/W	165 lm/W	146 lm/W
	<b>Distribution<sup>2</sup></b>	G	G, W	G, W, P	G	G
	<b>Sizes</b>	4', 8'	2', 4', 8'	2', 4'	2'	4'
	<b>Housing</b>	Polycarbonate	Fiberglass/Polyester	Fiberglass/Polyester	Fiberglass	Fiberglass
	<b>Lensing</b>	Polycarbonate	DR Acrylic or Polycarb	DR Acrylic or Polycarb	DR Acrylic or Polycarb	DR Acrylic or Polycarb
	<b>Wet Location</b>	Yes	Yes	Yes	Yes	Yes
	<b>IP Rating</b>	IP65	None	IP65, 66, 67	IP65, 66, 67, 69	IP65, 67
	<b>NSF</b>	None	Yes	Yes	Yes	Yes
	<b>NEMA 4X</b>	None	None	None	Yes	Yes
	<b>Life (@60K hrs)</b>	L89	L91	L91	L91	L92
	<b>Ambient Range</b>	-20C to 40C	-40C to 35C	-40C to 50C	-40C to 40C	-40C to 40C
<b>Emergency</b>	Yes	Yes	Yes	Yes	Yes	
<b>Vandal Resistant</b>	None	Optional	Optional	Optional	Optional	
<b>DLC</b>	Standard	Premium	Premium	Premium	Premium	
<b>INTEGRATED CONTROLS</b>	<b>Basic Occupancy</b>	✓	✓	✓	✓	✓
	<b>Stand Alone Daylight / Occupancy</b>	✓	✓	✓	✓	✓
	<b>WaveLinx</b>	✓		✓		✓
	<b>LumaWatt Pro<sup>3</sup></b>					

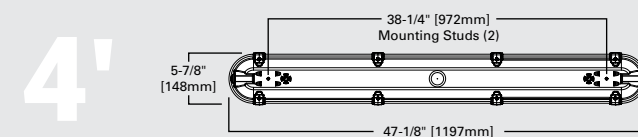
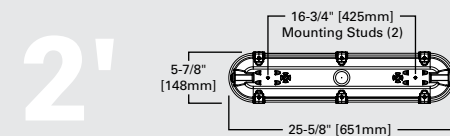
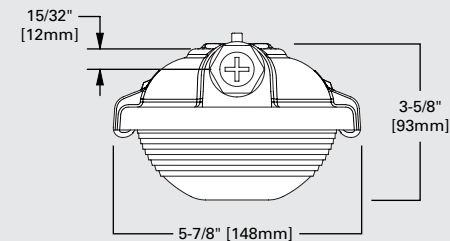
Notes: 1. ★★★ = high applicability, ★★ = medium applicability, ★ = low applicability, blank = non-applicable  
 2. G=General, W=Wide, P=Parking Garage.  
 3. Location data for asset tracking.

# VT3 Vaportite LED



Click on product to learn more

## Dimensions



The VT3 LED Series is an energy efficient industrial Vaportite fixture that features rugged and durable construction. The VT3 incorporates a sealed and gasketed, reinforced fiberglass housing with a high impact diffuser.

The VT3S offers selectable CCT and lumen with a single easy to access toggle switch. Use the VT3S for interior and exterior applications including parking garages, food processing, canopy, manufacturing and complex environments.

# VT3 Vaportite LED

## Construction

Compact and durable fiberglass reinforced polyester housing
High Impact polycarbonate optical lens
Sealed and gasketed, IP65, 66 and 67 listed
Suitable for interior and exterior applications
Surface or chain mounted

## Mounting



## Performance

High-Performance efficacy up to 154 lm/W; DLC Premium qualified
Precision optics in general, wide, or parking garage distribution
Available in 2ft and 4ft, with lumen packages up to 8,000 lumens
Lumen / CCT selectable option, 4 to 6400 lumen, 3/35/4000K
NSF International certified for NSF/ANSI Standard 2 - Food Equipment
Wet Locations listed and can operate in -40°C to 55°C ambient ratings

## Distribution



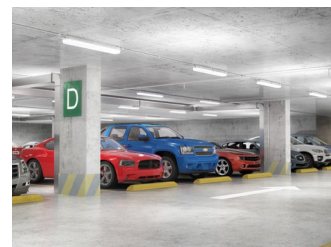
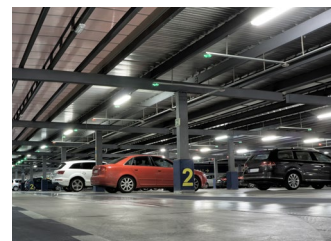
## Compliance and approvals



# Parking Garage

Parking garages that are commercially owned and operated as well as other parking facilities are the ideal retrofit opportunity to LED. These structures require unique lighting solutions because in many cases, these spaces operate 24 hours a day, 7 days a week. The lighting must provide safety while delivering glare-free illumination and have the performance to withstand weather elements, dust, moisture, and varying temperatures under extreme conditions.

## Vaportites

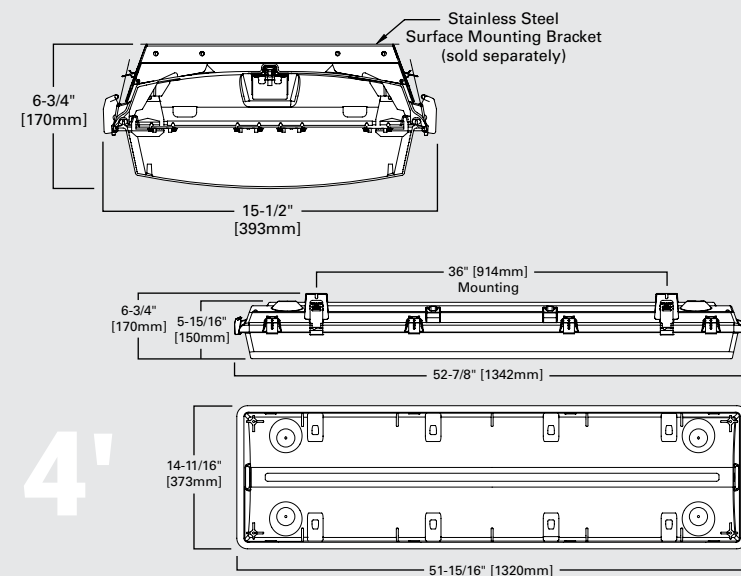


# VT4 Vaportite LED



Click on product to learn more

## Dimensions



The VT4 LED Series is an energy efficient industrial Vaportite fixture that features rugged and durable construction. The VT4 LED incorporates a full metal tray and heat sink inside a reinforced sealed and gasketed fiberglass housing with a high impact diffuser. This Vaportite series is suitable for interior and exterior applications and can be surface, chain, cable or stem mounted.

The VT4 LED Series has been designed for maximum operation in commercial institutional and industrial environments including cold storage, canopy, and general high bay lighting, where weathering, high temperature, humidity and dust are present.

## VT4 Vaportite LED

### Construction

Durable fiberglass reinforced polyester housing
High Impact clear or frosted acrylic, or polycarbonate optical lens
Sealed and gasketed
Suitable for interior and exterior applications
Surface, chain, cable, or stem mounted

### Performance

High-Performance efficacy up to 146 lm/W; DLC Premium qualified
Available in 3500K, 4000K and 5000K at 80 CRI
Available in 4ft, with lumen packages up to 30,000 lumens
IP65 and IP67 certified
NSF listed and NEMA 4x rated
Wet Locations listed and can operate in -40°C to 40°C ambient ratings

### Mounting



### Shielding



### Compliance and approvals



## Complex Environments

Complex environments have a number of requirements that traditional LED lighting fixtures cannot meet. They expect their lighting fixtures to operate in a wide range of temperatures and environments, be able to withstand moisture as well as dust.

Vaportite LED lighting fixtures can meet these requirements by providing customers with UL wet location listed fixtures that also have IP65, IP66, and IP67 ratings. Another common request is the ability to withstand high pressure wash down which Vaportite LED lighting fixtures can meet.

### Vaportites



VT3



VT4



VT4S



# VT4S Vaportite LED

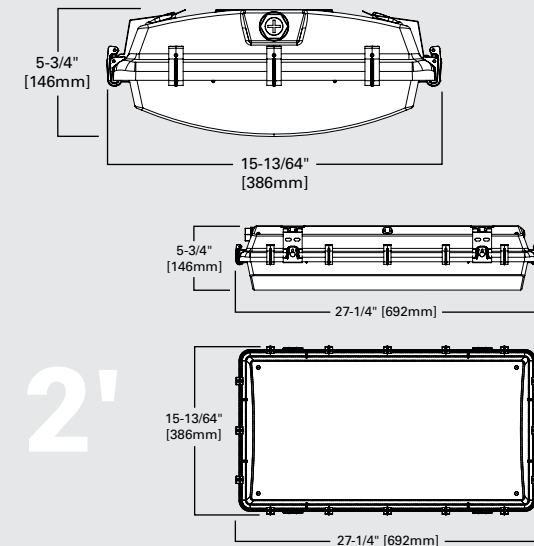
Click on product to learn more



The VT4S LED Series is an energy efficient industrial Vaportite fixture that features rugged and durable construction. The VT4S incorporates a sealed and gasketed, reinforced fiberglass housing with a high impact diffuser.

The VT4S's optical performance is ideal for interior and exterior applications including food processing, manufacturing, low bay and high bay applications, and complex environments.

## Dimensions



# VT4S Vaportite LED

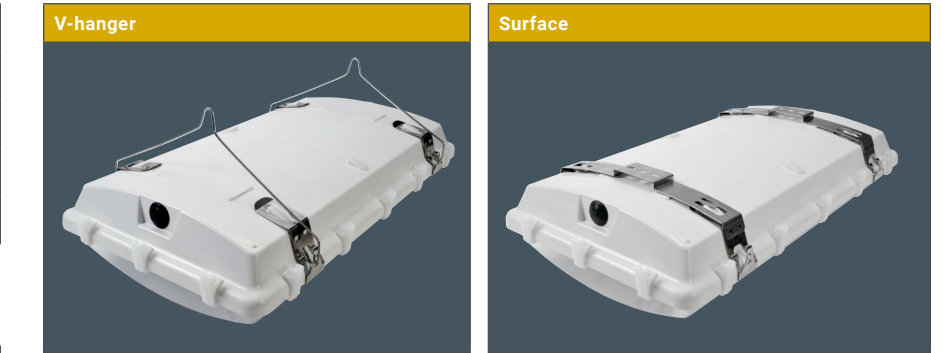
## Construction

Compact and durable fiberglass reinforced polyester housing
Clear or Frosted lens made from acrylic or high impact polycarbonate
Stainless-steel latch option available
Suitable for interior and exterior applications
Surface, chain, cable, or monopoint mounted

## Performance

High-Performance efficacy up to 157 lm/W; DLC Premium qualified
2ft housing delivers up to 18,000 lumens
Rated up to IP69 and NEMA 4X
NSF International certified for NSF/ANSI Standard 2 – Food Equipment
Wet Locations listed and can operate in -40°C to 40°C ambient ratings

## Mounting



## Shielding



## Compliance and approvals

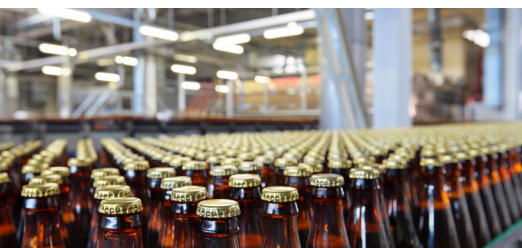


## Food Processing/Manufacturing

Food processing and food manufacturing environments can be difficult, challenging environments for LED lighting due to the stringent requirements of those facilities. The Vaportite LED lights must deliver energy savings but also perform in a wet environment. The reason that customers in these environments choose Vaportite LED lights is because they must also be subject to rigorous cleaning procedures that standard lighting fixtures cannot meet.

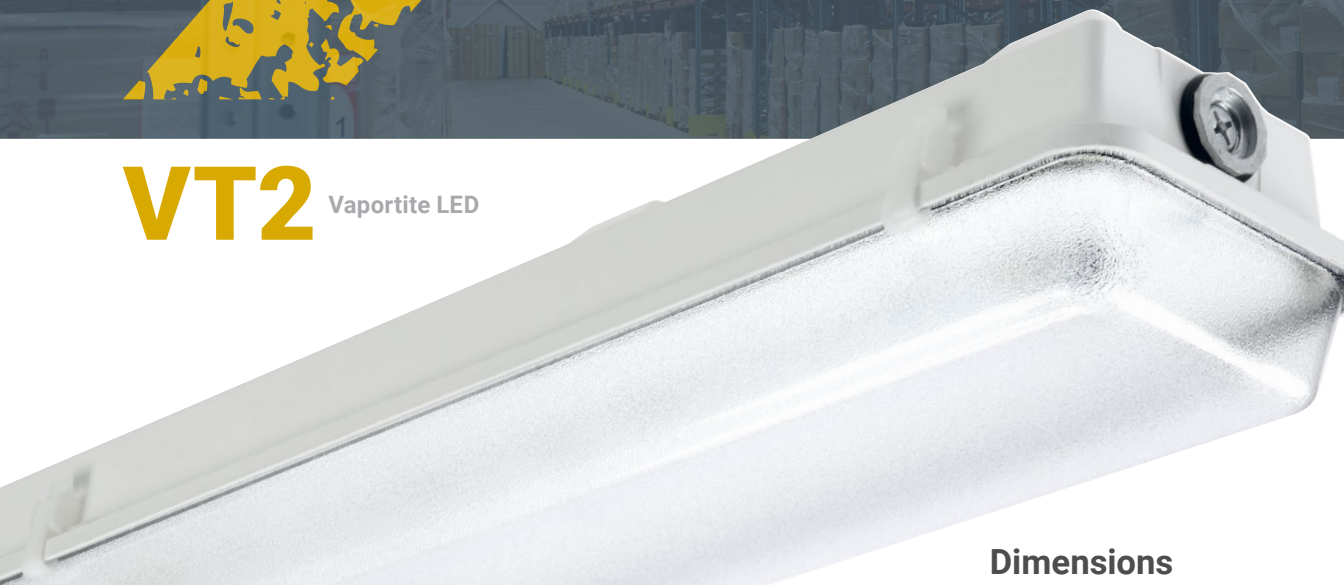
Specifically in food processing, there can be no toxic chemicals in the lighting fixtures and they must be able to withstand corrosion without exposing contamination in the area. NSF certified Vaportite LED fixtures are designed to meet the needs of food processing facilities. For best cleaning and sterilization practices, choose Vaportite LED fixtures with NSF certification combined with IP65, IP66 and IP67 dust and water-resistance ratings.

### Vaportites



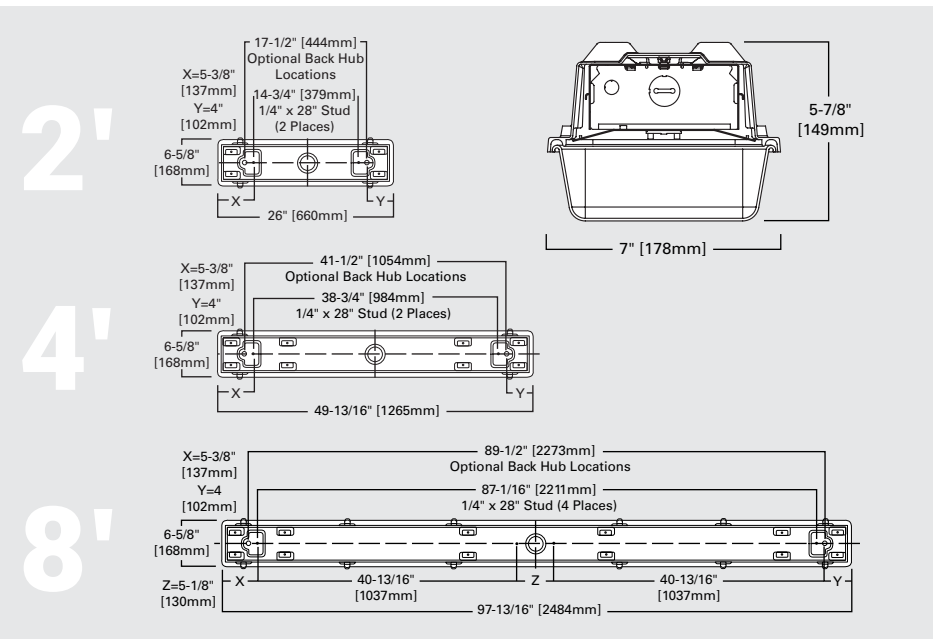


# VT2 Vaportite LED



Click on product to learn more

## Dimensions



The VT2 LED Series is an energy efficient industrial Vaportite featuring rugged and durable construction. The VT2 LED incorporates a full metal tray and heat sink inside a reinforced sealed and gasketed fiberglass housing with a high impact diffuser. The series is suitable for interior and exterior applications and can be surface, chain, cable or stem mounted.

The VT2 LED has been designed for maximum operation in commercial institutional and industrial environments and can operate in a wide range of temperatures (-40° C to 35°C) and is ideal for cold storage environments.

## VT2 Vaportite LED

### Construction

Durable fiberglass reinforced polyester housing
High Impact polycarbonate optical lens
Sealed and gasketed
Suitable for interior and exterior applications
Surface, chain, cable, or stem mounted

### Performance

High-Performance efficacy up to 150 lm/W; DLC Premium qualified
Precision optics in medium or wide distribution
Available in 2ft, 4ft, and 8ft with lumen packages up to 22,000 lumens
NSF Listed
Wet Locations listed and can operate in -40°C to 35°C ambient ratings

### Mounting



### Compliance and approvals



# Warehouse

Warehouses and distribution centers are large, vast spaces that can pose challenges to traditional LED lighting. Customers in these spaces are seeking lighting fixtures with lower watts per square foot to maximize energy savings. Not only do the lighting fixtures have to produce high lumen output at low wattages but they must be able to operate in a wide range of temperatures and environments.

Vaportite LEDs can meet these requirements by generating high efficacies while also being able to perform in extreme hot and cold temperatures.

## Vaportites

-  **APVT**
-  **VT2**
-  **VT3**
-  **VT4**
-  **VT4S**

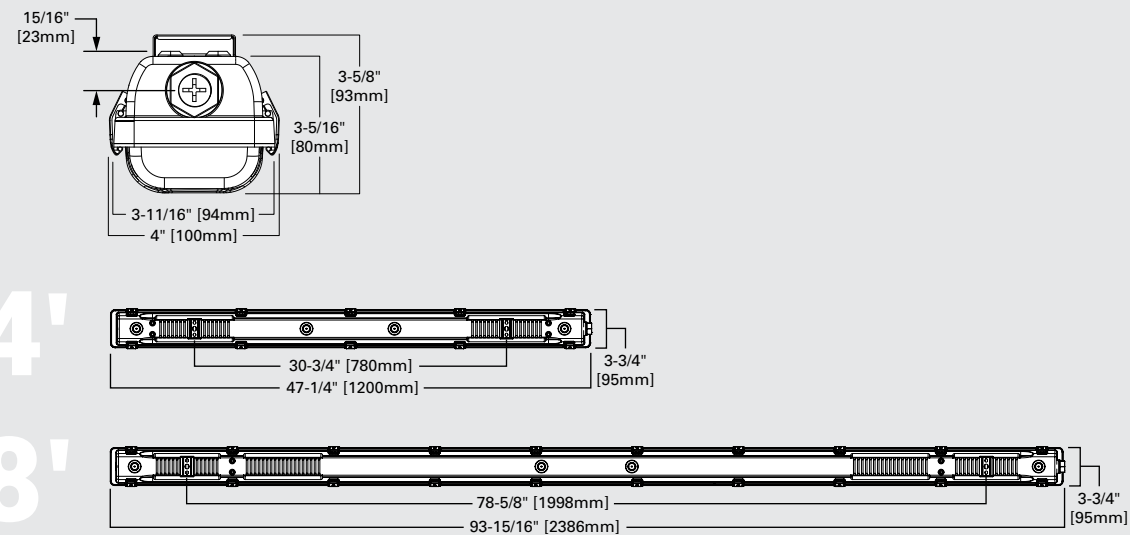


# APVT Vaportite LED



Click on product to learn more

## Dimensions



The APVT Vaportite LED Series is an energy efficient vaportite featuring Selectable Lumen and CCT. Its compact size, sealed and gasketed housing and 2-piece easy install design makes APVT fit for interior or exterior applications.

The APVTS now comes with factory installed sensors and emergency batter options to meet any light commercial or residential installs.

# APVT Vaportite LED

## Construction

IK08 optical lens, polycarbonate housing and stainless steel latches
Two piece captive lens, electrical and housing enclosure
Available in 4ft and 8ft lengths
Commercial ready with factory installed sensors and emergency battery options

## Performance

Lumen & CCT select option provide application versatility
Efficacy up to 151 lm/W, 0-10V dimming
4ft in 3,000/4,500/8,000 and 8ft in 8,000/10,000/12,000 lumen packages
Can operate in -20°C to 40°C ambient ratings

## Compliance and approvals



## Product Features

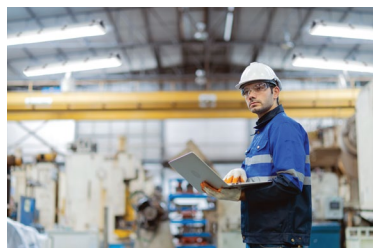


# Canopy

Canopy applications require outdoor lighting fixtures that are durable. They must provide not only high efficiency lighting with significant energy savings but be able to withstand the harsh elements of being outdoors.

Vaportite LED fixtures meet these needs with their rugged housing as well as their sealed and gasketed construction. These fixtures can withstand extreme variances in temperatures (hot and cold) as well as moisture, humidity, and dust. They also have high impact lenses which are resistant to breaks and vandalism.

## Vaportites



### **Lighting Brands**

Ametrix  
AtLite  
Corelite  
Ephesus  
Fail-Safe  
HALO  
HALO Commercial  
Invue  
iO  
Iris  
Lumark  
LumarkAP  
Lumière  
McGraw-Edison  
Metalux  
MWS  
NeoRay  
Portfolio  
PrentaLux - 3D Printed Lighting  
RSA  
Shaper  
Streetworks  
Sure-Lites

### **Controls Brands**

Greengate  
Fifth Light  
Intelligent Lighting Controls

### **Connected Lighting Systems and Smart Spaces Platform**

WaveLinx  
Trellix Infrastructure



**Cooper Lighting Solutions**  
1121 Highway 74 South  
Peachtree City, GA 30269  
P: 770-486-4800  
[www.cooperlighting.com](http://www.cooperlighting.com)

Canada Sales  
5925 McLaughlin Road  
Mississauga, Ontario L5R 1B8  
P: 905-501-3000  
F: 905-501-3172

© 2024 Cooper Lighting Solutions  
All Rights Reserved  
Printed in USA  
Publication No. BR507012EN  
May 1, 2024 12:34 PM

Cooper Lighting Solutions is a registered trademark.

All other trademarks are property of their respective owners.

Product availability, specifications, and compliances are subject to change without notice.