

Project		Catalog #		Type	
Prepared by		Notes		Date	



Ephesus

LUMASPORT 8 - Integral

White LED Sports & Entertainment Luminaire

Typical Applications

Ball Fields • Pro Arenas • University & Collegiate Arenas
University & Collegiate Stadiums • Multi-Event & Convention Centers
Gymnasiums & Field Houses

Product Certification



Interactive Menu

- Ordering Information [page 2](#)
- Dimensional and Mounting Details [page 3](#)
- Performance Data [page 7](#)
- Electrical Performance Data [page 7](#)
- Ordering Information for Accessories [page 8](#)
- Accessory Dimensions and Part Details [page 9](#)
- Example System Topology [page 12](#)

Top Product Features

- Streamlined design ideal for one-to-one integral ballast retrofit systems speeding up and simplifying installation.
- Pre-aiming capability reduces installation time and ensures aiming precision.
- Industry leading light source reliability with Chip-on-Board LEDs with an efficacy up to 174 lumens per Watt.
- Award winning glare and cutoff control via patented Hybrid Reflector and TIR Optical System.
- 4000K & 5700K CCT options to meet diverse venue requirements.
- Top Yoke, Bottom Yoke, and Pendant mounting options for flexibility in applications.
- Power redundancy insures system reliability.
- Wired DMX and Wireless AirMesh control protocols allow for system alerts, scheduling, and on-demand control of static and dynamic lighting scenes.
- Options to meet Trade Agreements Act requirements.

Mounting Configuration Examples



2QTY LUMASPORT 8 - INTEGRAL LUMINAIRE
SHOWN USING THE TOP MOUNT YOKE (TY)



2QTY LUMASPORT 8 - INTEGRAL LUMINAIRE
SHOWN USING THE BOTTOM MOUNT YOKE (BY)
ON A EPHEBUS CATWALK BRACKET (EPH-LS-CAT-N-2-U-B)



1QTY LUMASPORT 8 - INTEGRAL LUMINAIRE
SHOWN USING THE PENDANT MOUNT (RP)

Order Information

NOTE: A complete fixture order requires a selection entry for **Brand, Family, Model, Power Configuration, Color, CCT, CRI, Optic, Light Head Cable (DC), Voltage, Control, Mount Configuration, Power Cable (AC), Options, Packaging, & Special Option.**

SAMPLE ORDER NUMBER: EPH-LS-08-0680N-BLK-57-80-2S-C00-LV-AM-BY-A04-HEG-BP-ST

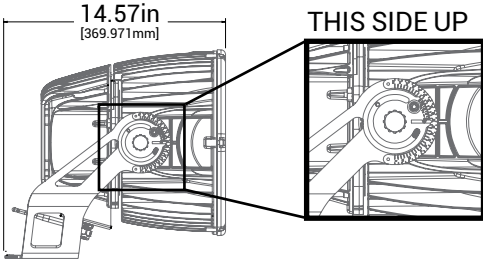
Brand	Family	Model	Power Configuration	Color	CCT	CRI	Optic	Light Head Interface (DC)
Brand	Family	Model	Power Configuration	Color ²	CCT	CRI	Optic ³	Light Head Interface (DC) ⁵
EPH = Ephesus, Standard TAA=Trade Agreements Act ¹	LS = Lumasport	08 = 8 Optics	0320N = 320W Integral Power 0530N = 530W Integral Power 0680N = 680W Integral Power	BLK = Black WHT = White	40 = 4000K 57 = 5700K	70 = 70 CRI 80 = 80 CRI	1S ⁴ = NEMA 3 17.5 33.3 2S = NEMA 3 21.9 40.2 3S = NEMA 3 25.4 45.7 4S = NEMA 4 36.0 64.4 5S = NEMA 5 46.6 82.6 7F = NEMA 7 72.5 131.0	C00 = Direct Connection
Notes: (1) Only product configurations with this designated prefix are built to be compliant with the Trade Agreements Act of 1979 (TAA). Please refer to DOMESTIC PREFERENCES website for more information. Components shipped separately may be separately analyzed under domestic preference requirements.				Notes: (2) Not coastal rated. Contact Ephesus for coastal fixture options.			Notes: (3) Optic = NEMA TYPE; BEAM ANGLE; FIELD ANGLE. (4) Aiming angles for 680N power configuration and 1S optics between 30-90 Degrees.	Notes: (5) The driver assembly is integrated directly into the luminaire

Voltage	Control	Mount Configuration	Power Cable (AC)	Options	Packaging	Special Option
Voltage	Control	Mounting Configuration ⁶	Power Cable (AC) ⁸	Options	Packaging	Special Option
LV = Low Voltage HV = High Voltage	NC = No Control AM = Wireless AirMesh LB = Wired DMX	TY = Top Mounted Yoke BY = Bottom Mount Yoke, Catwalk Standard RP ⁷ = Pendant Mount	A04 = 4ft Cable, Standard A10 = 10ft Cable A20 = 20ft Cable BH3 = 3 Pin Connector on AC, 3ft Standard Cable	HEG = No Visor High Efficiency Glass Lens VHE ⁹ = Visor High Efficiency Glass Lens CV1 ¹⁰ = 1 Louver Cutoff Visor CV2 ¹⁰ = 2 Louver Cutoff Visor CV5 ¹⁰ = 5 Louver Cutoff Visor	BP = Bulk Pack	ST = Standard
		Notes: (6) Contact Ephesus for Slipfitter Mounting options. (7) RP = Pendant Mount not available in 0680N = 680N Integral Power configuration.	Notes: (8) AC Cable connecting the luminaire to the electrical power source.	Notes: (9) VHE visor color only available in silver. (10) CV1, CV2, CV5 visor color only available in black.		

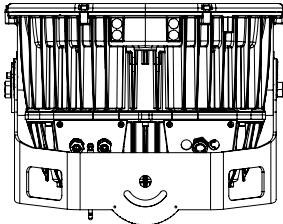
DesignLights Consortium® Qualified. Refer to www.designlights.org Qualified Products List under Family Models for details

Dimensional and Mounting Details

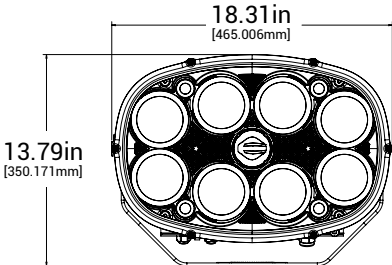
MOUNTING CONFIGURATION: TOP MOUNT YOKE



LEFT PROFILE

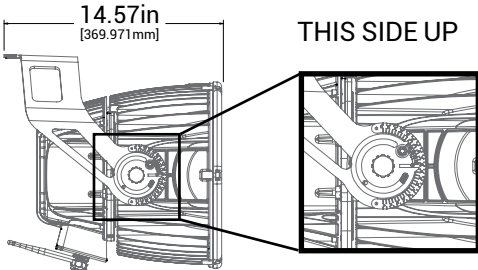


BOTTOM: LATERAL ORIENTATION MOUNT

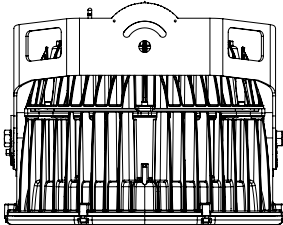


HEAD ON

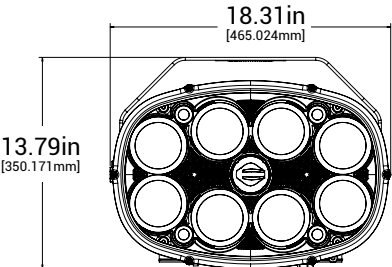
MOUNTING CONFIGURATION: BOTTOM MOUNT YOKE



LEFT PROFILE

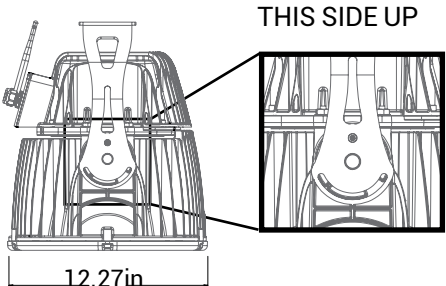


TOP

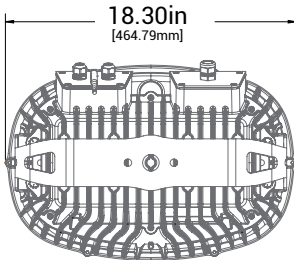


HEAD ON

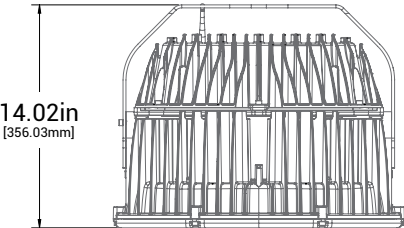
MOUNTING CONFIGURATION: PENDANT MOUNT



LEFT PROFILE



TOP

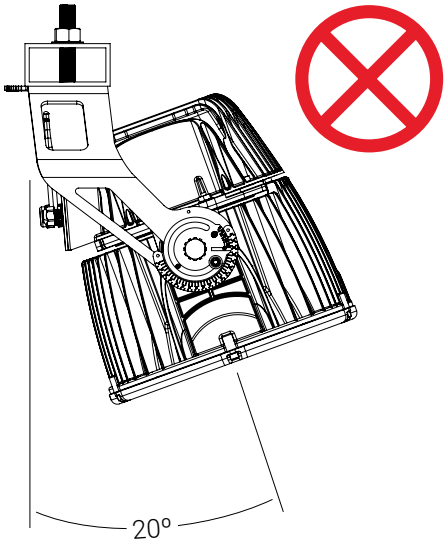


HEAD ON

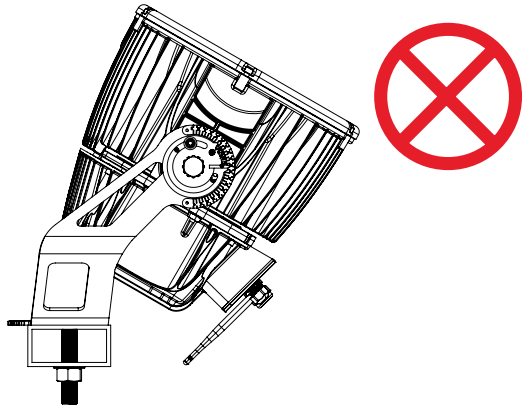
	320W		530W		680W	
Usage	Indoor	0-90 Degrees	Indoor	0-90 Degrees	-	-
	Outdoor	0-90 Degrees	Outdoor	0-90 Degrees	Outdoor	20-90 Degrees; 30-90 Degrees for 1S optic
Mounting options (1.5G Rated)	Top mount yoke, bottom mount yoke, pendant mount		Top mount yoke, bottom mount yoke, pendant mount		Top mount yoke, bottom mount yoke	

INCORRECT ORIENTATIONS

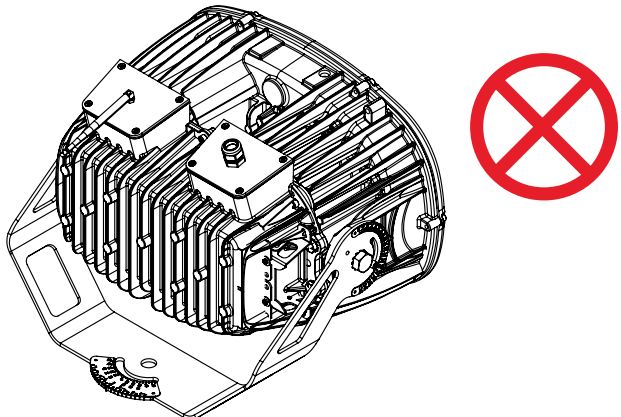
680W configurations can not be aimed downward below 20°
 680W 1S configurations can not be aimed downward below 30°
 All configurations can not be aimed downward below 20° outdoors or in wet locations



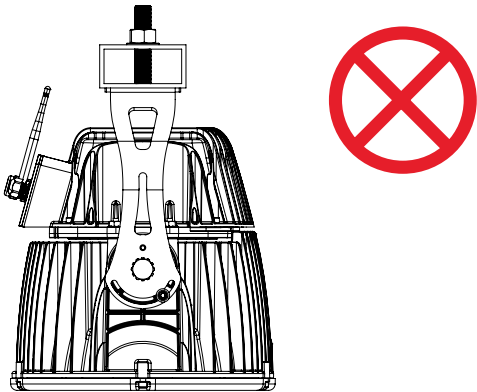
Uplight not allowed



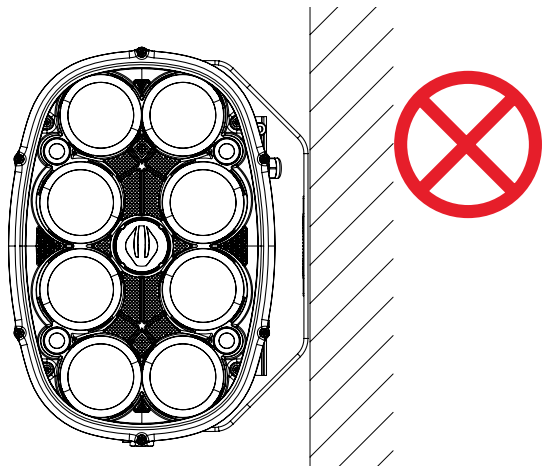
All configurations can not be inverted with junction box on top



680W configurations can not be used with the Pendant Mount

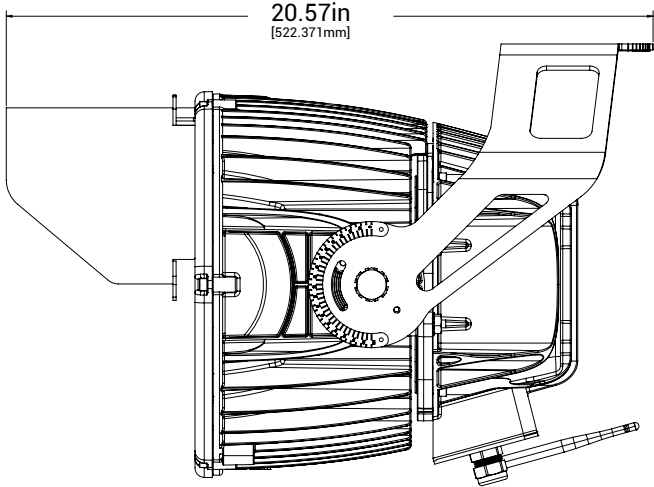


All configurations can not be side mounted

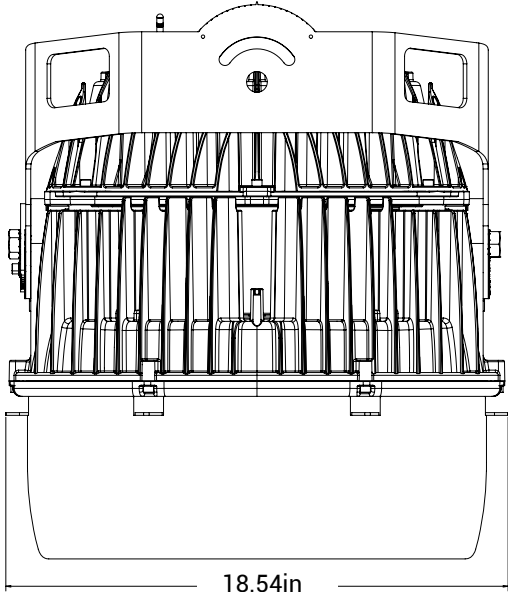


VHE Visor Option Dimensional Details

MOUNTING CONFIGURATION: BOTTOM MOUNT YOKE



LEFT PROFILE: VISOR

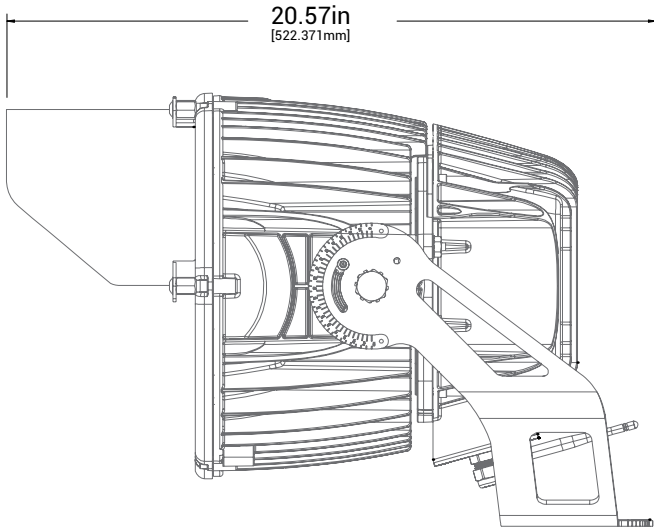


TOP: VISOR

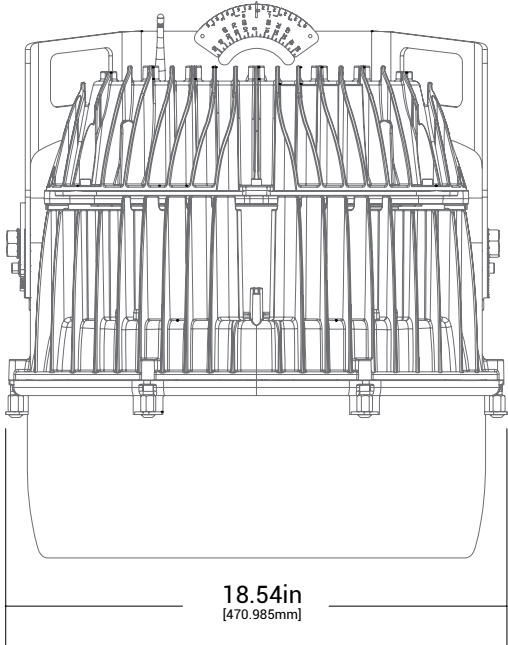
NOTES:

The addition of a visor adds 4lbs of material to the luminaire weight.

MOUNTING CONFIGURATION: TOP MOUNT YOKE

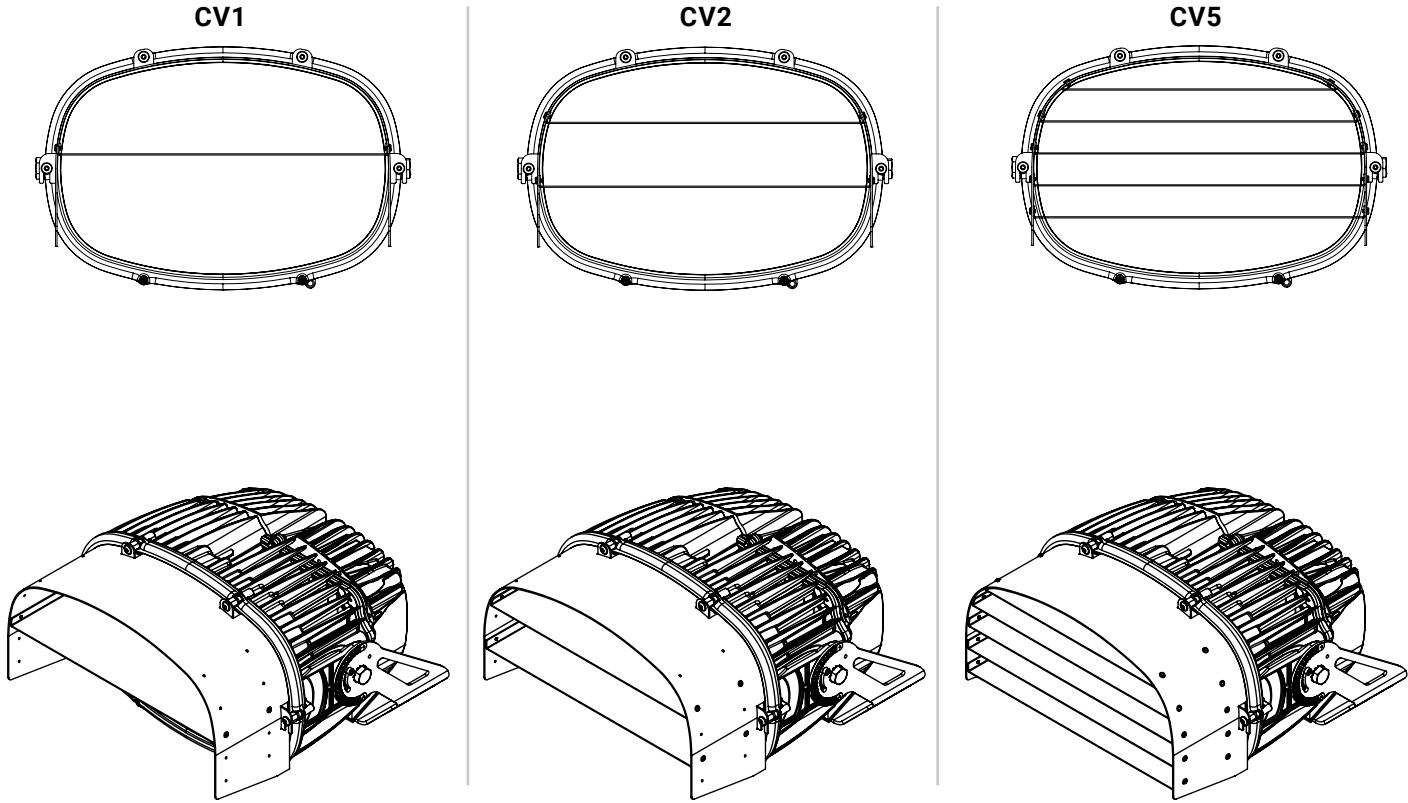


LEFT PROFILE: VISOR

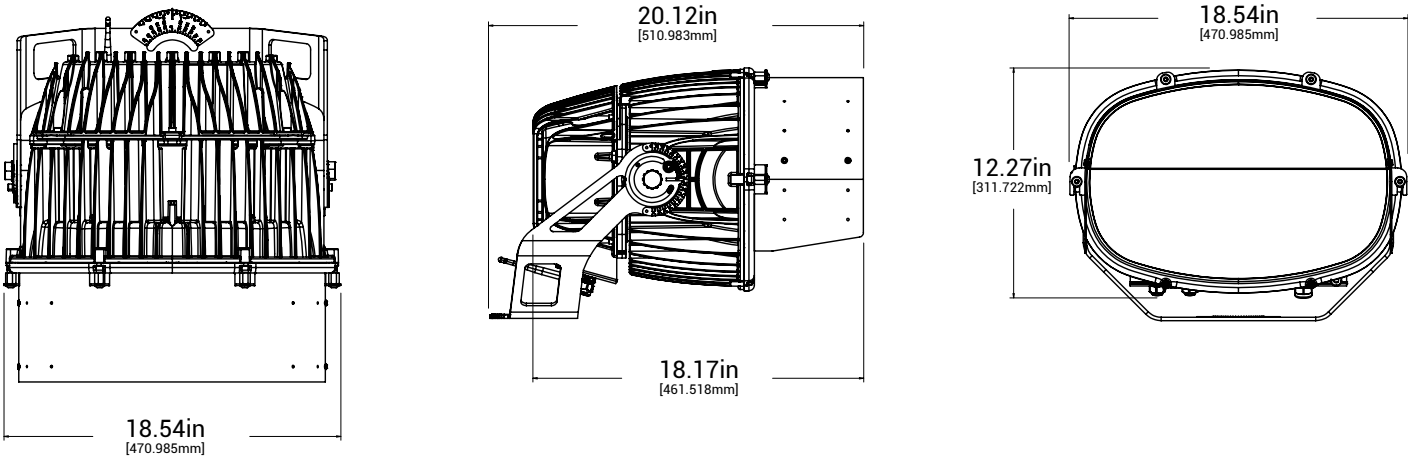


TOP: VISOR

CV1, CV2, CV5 Cutoff Visor Options



CV1, CV2, CV5 Cutoff Visor Option Dimensional Details



Performance Data¹

	LUMASPORT 8 (320W)	LUMASPORT 8 (530W)	LUMASPORT 8 (680W)
Lumen Output Range	51,000 - 60,000 lm	78,000 - 90,000 lm	93,000 - 111,000 lm
Nominal Power²	355W	578W	724W
Input Voltage (Low Voltage)	120-277VAC	120-277VAC	120-277VAC
Input Voltage (High Voltage)	347-480VAC	347-480VAC	347-480VAC
Efficacy Range	149 - 174 lm/W	140 - 162 lm/W	128 - 159 lm/W
CRI³	70, 80	70, 80	70, 80
TLCI⁴	up to 75	up to 75	up to 75
CCT Range	4000K, 5700K	4000K, 5700K	4000K, 5700K
Distribution (NEMA)	3-7	3-7	3-7
Dimming Range	DIM TO OFF, 10%-100%	DIM TO OFF, 10%-100%	DIM TO OFF, 10%-100%
Operating Temperature Range	-40°C to +40°C	-40°C to +40°C	-40°C to +40°C
Usage	INDOOR, OUTDOOR	INDOOR, OUTDOOR	OUTDOOR
Mounting Options (1.5G RATED)	TOP MOUNT YOKE, BOTTOM MOUNT YOKE, PENDANT MOUNT	TOP MOUNT YOKE, BOTTOM MOUNT YOKE, PENDANT MOUNT	TOP MOUNT YOKE, BOTTOM MOUNT YOKE
Electrical Certifications	FCC, UL8750, UL1598, DLC Standard (NANQSV)	FCC, UL8750, UL1598, DLC Standard (NANQSV)	FCC, UL8750, UL1598, DLC Standard (NANQSV)
Environmental Certifications	IP66	IP66	IP66
Vibration	ANSI C136.31-2010 1.5G	ANSI C136.31-2010 1.5G	ANSI C136.31-2010 1.5G
Surge	10kV	10kV	10kV
Effective Projected Area (EPA)	1.93 (sq. ft.)	1.93 (sq. ft.)	1.93 (sq. ft.)
Effective Projected Area (EPA) with Visor (VHE, CV1, CV2, CV5)⁸	2.2 - 2.4 (sq. ft.)	2.2 - 2.4 (sq. ft.)	2.2 - 2.4 (sq. ft.)
Approximate Weight⁹	57 LBS	57 LBS	57 LBS
Approximate Weight with Visor (VHE, CV1, CV2, CV5)⁹	61 LBS	61 LBS	61 LBS

NOTES:

- (1) Specifications are subject to change without notice.
- (2) Values are +/- 4% when fixture is operated at 25°C ambient
- (3) Values are +/- 2%
- (4) Values are +/- 3 points.
- (5) When driver box is mounted in upright position.
- (6) Luminaire meets NEMA4X Certification
- (7) LumaSport 8 with Visors (VHE, CV1, CV2, CV5) qualifies for ANSI C136, 31-2010 1.5G
- (8) EPA may vary depending on the aiming angle of the fixture.
- (9) Weight may vary depending on mounting bracket, VHE Visor option, and luminaire configuration.

Electrical Performance Data

Product	Voltage Level	Input voltage range (VAC)	Nominal input power(W)	Input Current(A)	Power factor (@ max load)	THD (@ maxload)	Inrush period (ms)	Peak Inrush (A)
LS-8-320N	(-LV-) Low Voltage	120	357	2.97	0.99	4.79	0.28	133
		277	3489	1.28	0.98	7.66	0.27	311
	(-HV-) High Voltage	347	359	1.04	0.99	7.02	0.41	92
		480	358	0.76	0.98	9.20	0.41	129
LS-8-530N	(-LV-) Low Voltage	120	591	6.81	0.99	5.61	0.4	188
		277	573	2.84	0.97	11.6	0.38	440
	(-HV-) High Voltage	347	576	2.4	0.99	8.16	0.58	130
		480	573	1.69	0.98	10.17	0.58	182
LS-8-680N	(-LV-) Low Voltage	120	744	8.5	0.99	5.69	0.4	188
		277	716	3.5	0.98	11.32	0.38	440
	(-HV-) High Voltage	347	722	2.99	0.99	6.86	0.58	130
		480	716	2.11	0.98	9.16	0.58	182

NOTE: Measured at 25°C Ambient Conditions.

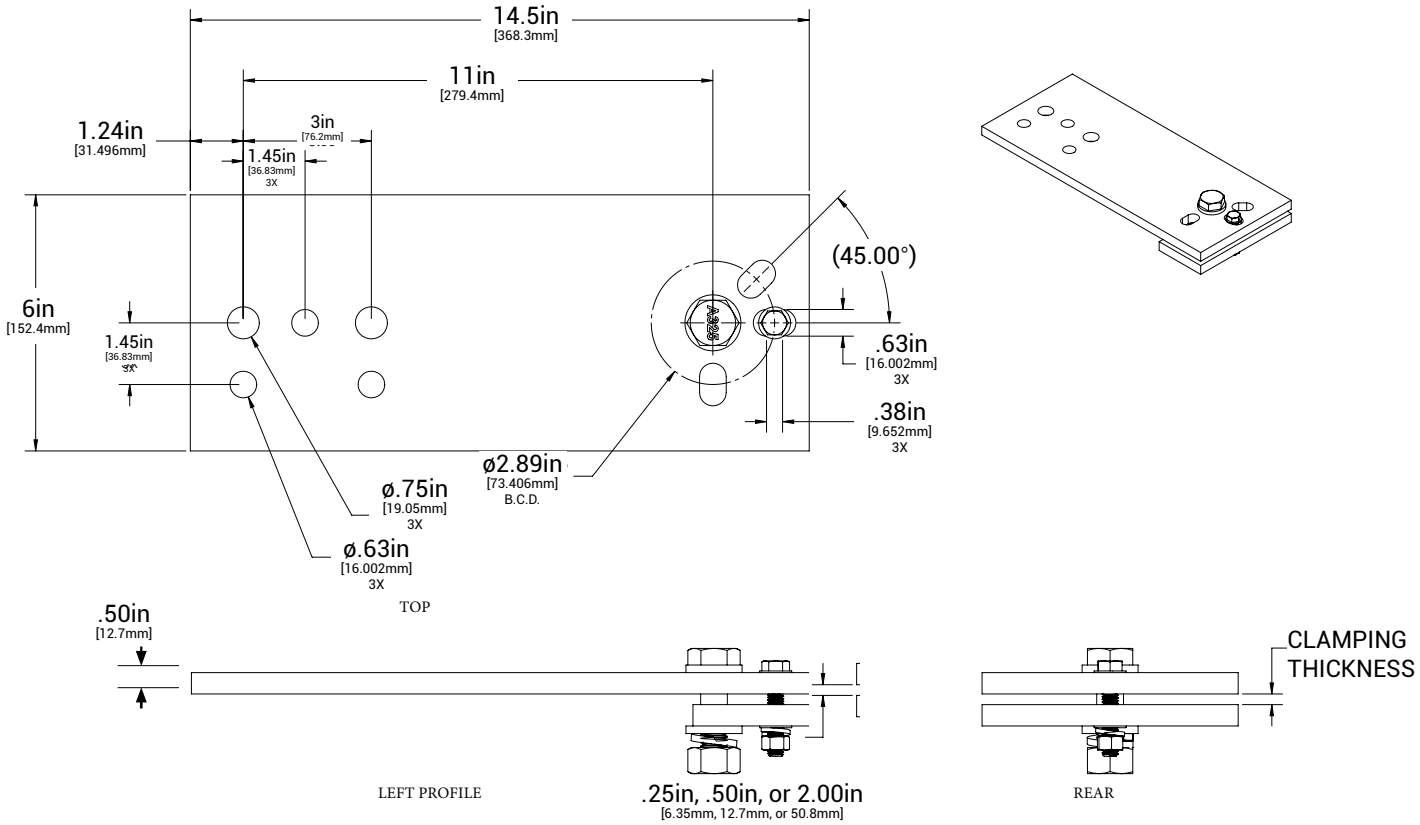
Ordering Information for Accessories

NOTE: A complete accessory order requires a selection entry for **Brand, Accessory, Option**.

SAMPLE ORDER NUMBER: **EPH-HRDM34-025**

Brand	Accessory	Option	Intended Use
EPH = Ephesus	EXTPLT = Extension Plate ¹	025 = .25in 050 = .5in 200 = 2.0in	Extension Plate Kit to mount to structures .25in, .5in, or 2.00in thick. Designed to be used with the LUMASPORT 8 - Local, LUMASPORT 8 - Integral, LUMADAPT 8, LUMASPORT 8 PRISM - Local luminaires only.
	DVGBRD = Diving Board ²		Diving Board to mount to 2in x 4in steel cross arms. Designed to be used with the LUMASPORT 16 - Local, LUMASPORT 8 - Local, LUMASPORT 8 - Integral, LUMADAPT 8, LUMASPORT 8 PRISM - Local luminaires only.
	HRDM58 = Mounting Hardware 5/8in diameter	050 = .375in - .50in Range of Clamping Thickness ³ 200 = 2in Clamping Thickness ³	HRDM58-050: .375-.50in clamping thickness, Use for Extension Plate (EXTPLT) or other flat surfaces drilled for 5/8in hardware HRDM58-200: 2.00in clamping thickness, use for 2in x 4in Cross arms that are drilled for 5/8in hardware
	HRDM34 = Mounting Hardware 3/4in diameter	025 = .25in ⁴ 075 = .75in ⁴ 200 = 2in ⁴	HRDM34-025: .25-.50in clamping thickness, use for diving board (DVGBRD) or other flat surfaces drilled for 3/4in hardware HRDM34-075: .50-.75in clamping thickness, flat surfaces drilled for 3/4in hardware HRDM34-200: 2.00in clamping thickness, use for 2in x 4in Cross arms that are drilled for 3/4in hardware
	Notes: (1) Additional mounting fastener hardware kit needed to attach a fixture to the EXTPLT = Extension Plate (2) Additional mounting fastener hardware kit needed to attach a fixture to the DVGBRD = Diving Board	Notes: (3) Option only available for use with HRDM58 (4) Option only available for use with HRDM34	

Extension Plate (EXTPLT) Dimension and Part Details:



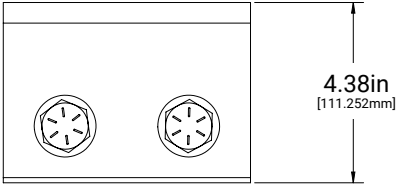
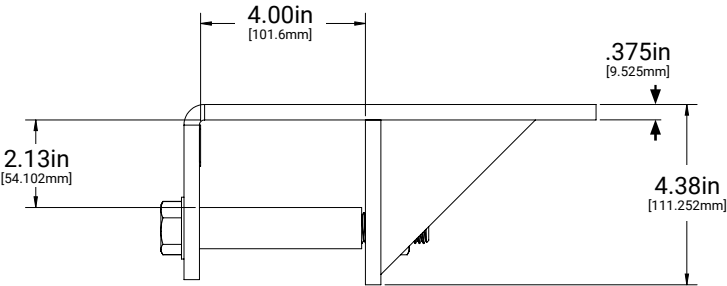
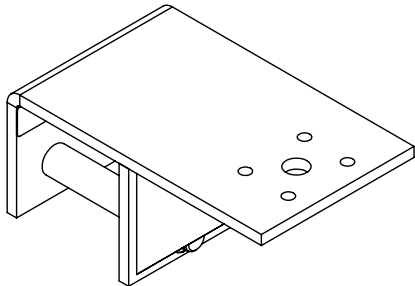
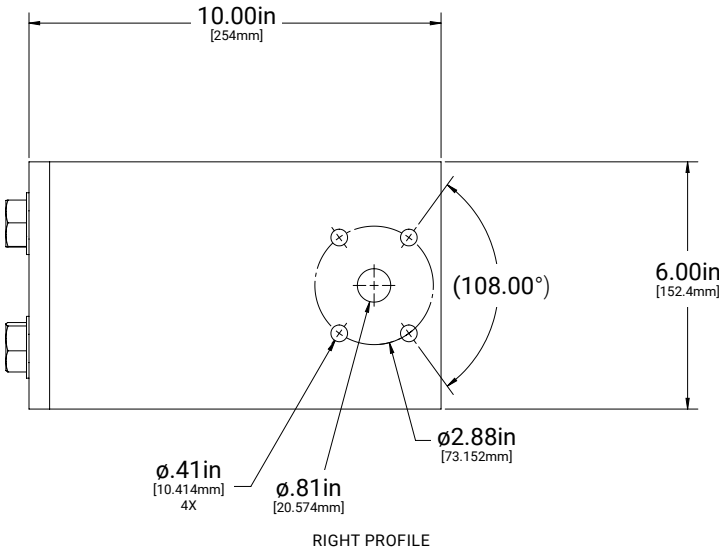
Extension Plate Data

MODEL #	WEIGHT (LBS)
EXTPLT	14.63
EXTPLT + HRDM58-050	15.28

Extension Plate Kit Parts

DESCRIPTION	QUANTITY
Extension Plate	1
Washer Plate	1
5/8in Hex Bolt	1
5/8in Washer	2
5/8in-11 Hex Nut	1
5/8in Split Washer	1
3/8in Washer	2
3/8in Hex Bolt	1
3/8in Split Washer	1
3/8in-16 Hex Nut	1

Diving Board (DVGBRD) Dimension and Part Details:



Diving Board Data

MODEL #	WEIGHT (LBS)
DVGBRD	15.1
DVGBRD + HRDM34-025	16.1

Diving Board Parts

DESCRIPTION	QUANTITY
Welded Bracket	1
Bolt Sleeve	2
3/4in-10 X 6in Structural Hex Bolt, Hot Dip Galvanized	2
3/4in Steel Flat Washer, Hot Dip Galvanized	2
3/4in Ext Tooth Washer, Steel, Magni-565 Grey Polycoat	2
3/4in-10 Structural Steel Hex Nut, Hot Dip Galvanized	2
Stainless Shim	1

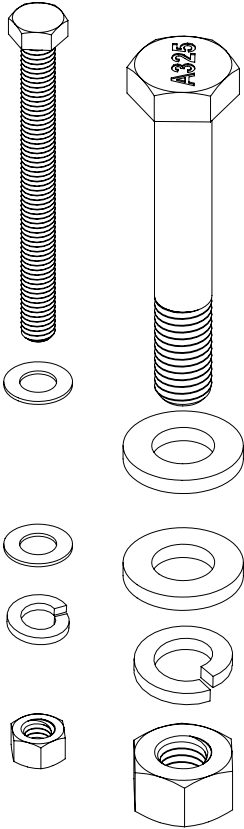
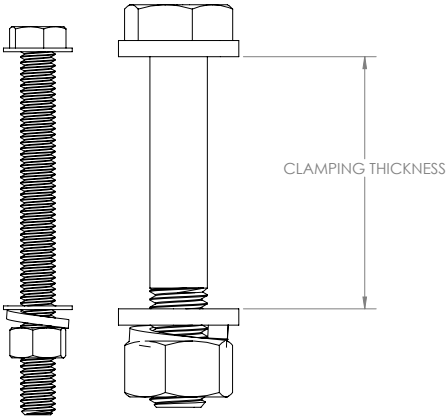
HRDM58 Dimension and Part Details:

HRDM58-050:
 .375-.500in clamping thickness, Use for Extension Plate (EXTPLT) or other flat surfaces drilled for 5/8in hardware

HRDM58-200:
 2.00in clamping thickness, use for 2in x 4in Cross arms that are drilled for 5/8in hardware

HRDM58 Data

MODEL #	WEIGHT (LBS)
HRDM58-050	.65
HRDM58-200	.84



HRDM34 Dimension and Part Details:

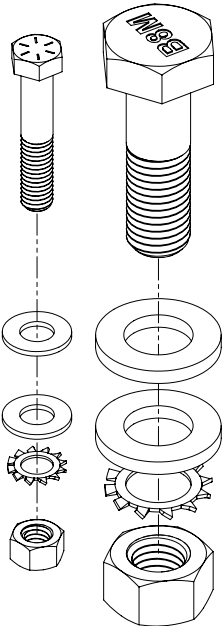
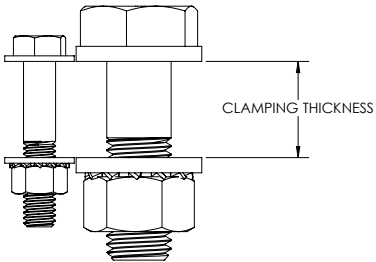
HRDM34-025:
 .25-.50in clamping thickness, use for diving board (DVGBRD) or other flat surfaces drilled for 3/4in hardware

HRDM34-075:
 .50-.75in clamping thickness, flat surfaces drilled for 3/4in hardware

HRDM34-200:
 2.00in clamping thickness, use for 2in x 4in Cross arms that are drilled for 3/4in hardware

HRDM34 Data

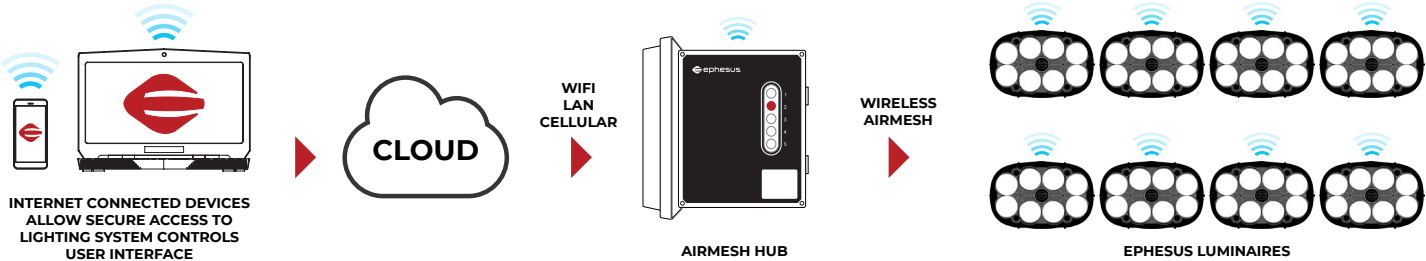
MODEL #	WEIGHT (LBS)
HRDM34-025	1
HRDM34-075	1.5
HRDM34-200	2



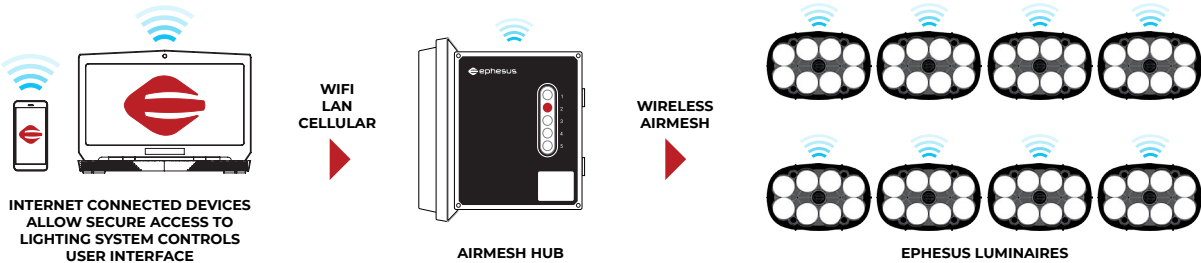
Example System Topology (Wireless AirMesh Controls)

Example system topology showing the LUMASPORT 8 System in a Wireless AirMesh Control Installation. Note: Laptop and mobile device not included. A cellular network connection requires a cellular carrier network plan.

REMOTE ACCESS



ON SITE ACCESS



Example System Topology (Wired DMX Controls)

Example system topology showing the LUMASPORT 8 System in a commonly used wired DMX Control Installation. Refer to the specifications and limitations of your wired DMX control device before installing this configuration.

