



The Largest Selection of  
Canless LED Downlighting

# HALO<sup>®</sup>

Canless LED Downlighting



## Products for Every Application

Single Family



Multi-Family



Mixed-Use



Light Commercial



**Go  
Slim.**



**1/2" thin fixtures that  
install virtually anywhere**

**Go  
Adjustable.**



**Shine light straight  
down from sloped  
ceilings or exactly  
where you need it.**

**Go  
Regressed.**



**Canless trims with  
regressed lenses deliver  
low-glare regressed  
canless downlighting**

**Go  
Quick.**



**Install downlighting faster  
with the QuickLink Low  
Voltage System**

**QuickLink**  
Low Voltage System

# Go Fast.

Lighting solutions that reduce installation time, costs and headaches



**NO HOUSING NEEDED!**

**Installs Virtually Anywhere**

1



Cut hole in ceiling

2



Connect wiring to junction box

3



Select color temp (and lumens if available)

4

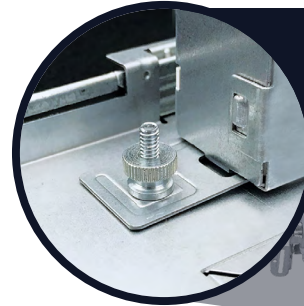


Connect LED module to driver and install into ceiling

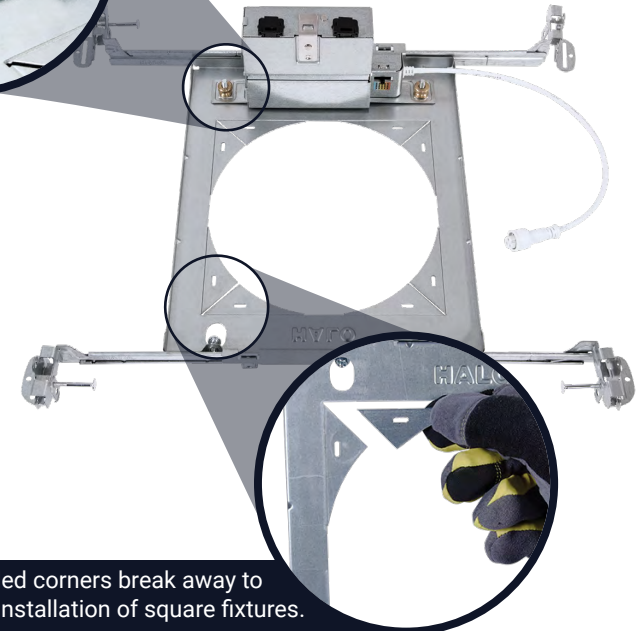
5



Push module up into the ceiling



During electrical rough-in, the canless driver / junction box attaches to the mounting frame with captive fasteners meeting code requirements for attachment to the building structure.



Rounded corners break away to allow installation of square fixtures.

**HL2RSMF**

2" round and square mounting frame

**HL3RSMF**

3" round and square mounting frame

**HL4RSMF**

4" round and square mounting frame

**HL6RSMF**

6" round and square mounting frame

**HL8RSMF**

8" round and square mounting frame

# Go Custom.

Field selectable solutions to meet your specific needs



2700K

3000K

3500K

4000K

5000K

Adjust the color temperature in the field using the switch on the driver box. Choose from 5 color temperatures 2700K - 5000K on most HALO canless fixtures. Specific models offer 5CCT + Dim-to-Warm or even Selectable Lumens.



**dim-to-warm**  
set the mood

3000K 1800K

With a standard dimmer, HALO's Dim-to-Warm setting will start at 3000K and dim smoothly to a rich, warm glow that resembles candlelight or a sunset (1800K).

# Go Slim.

Ultra Shallow Plenum  
Fits in 3/8" - 1-1/4" ceilings



Ultra-thin design installs under obstructions and in shallow plenum spaces

## Slim Canless LED (Contractor Grade)

Smooth Lens • 3CCT



**HLBSL4**  
4" Round Downlight



**HLBSL6**  
6" Round Downlight

## HLB Slim Low-glare Canless LED

Prismatic Lens • 5CCT



**HLB3**  
3" Round Downlight



**HLB3S**  
3" Square Downlight



**HLB4**  
4" Round Downlight



**HLB4S**  
4" Square Downlight

## Slim Canless LED

Smooth Lens • 5CCT



**HLBPH4**  
4" Round Downlight



**HLBPH6**  
6" Round Downlight



**HLB6**  
6" Round Downlight



**HLB6S**  
6" Square Downlight



**HLB8**  
8" Round Downlight

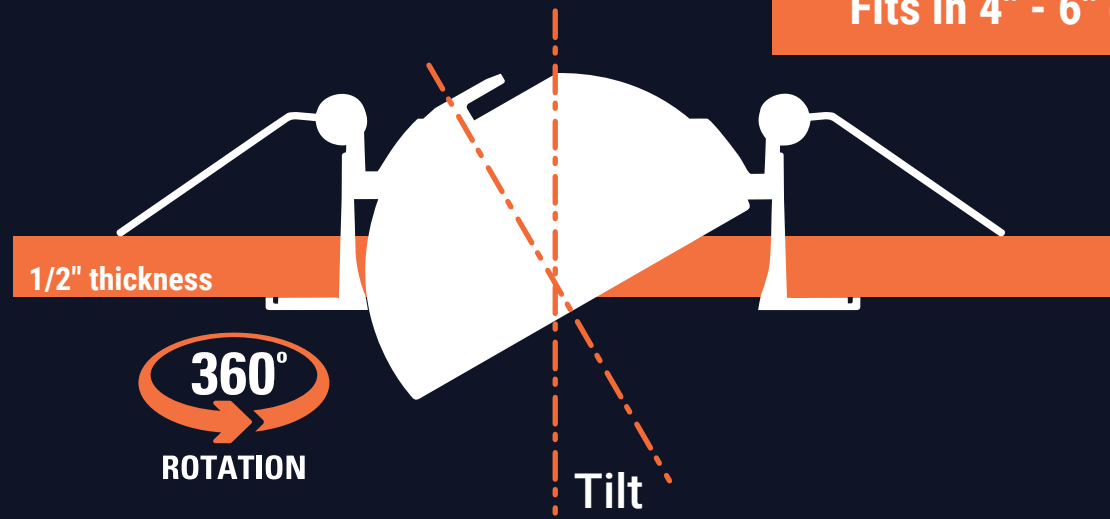


**HLB12**  
12" Round Downlight

# Go Adjustable.

Aim lighting exactly where you need it

Shallow Plenum  
Fits in 4" - 6" ceilings



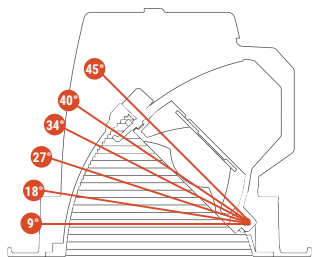
## Slope Adjustable Canless LED

Integrated Optical Lens • 5CCT •  
6-Position Tilt (9°-45°)



**RLS4-DM**  
4" Round Slope  
Adjustable

**RLS6-DM**  
6" Round Slope  
Adjustable



**Match Ceiling Pitches**  
6-Position Regressed Tilt  
9°-45° (12:2-12:12)

## Canless Regressed Adjustable

Smooth Lens • 5CCT •  
35° Tilt • 360° Rotation



**RA4-DM**  
4" Round Adjustable



**RA6-DM**  
6" Round Adjustable

## Slim Adjustable Gimbal Canless LED

Prismatic Lens • 5CCT • 30° Tilt • 360° Rotation



**HLA3**  
3" Round Adjustable



**HLA3S**  
3" Square Adjustable



**HLA4**  
4" Round Adjustable



**HLA4S**  
4" Square Adjustable

# Go Regressed.

Shallow Plenum  
Fits in 4" - 6" ceilings

1/2" thickness

Regressed to limit glare and provide the look of a traditional downlight

## Regressed Downlight



**LT3-DM**  
3" Downlight



**LT4-DM**  
4" Downlight



**LT6-DM**  
6" Downlight

## Regressed low-glare Downlight



**RL4-DM**  
4" Downlight



**RL6-DM**  
6" Downlight

## Night Light Series



**RL4-DM**  
4" Downlight/Night Light



**RL6-DM**  
6" Downlight/Night Light

## Dual Dimming Regressed Downlight



**LCR2**  
2" Downlight



**LCR4**  
4" Downlight & Wall Wash



**LCR6**  
6" Downlight & Wall Wash



**LCR8**  
8" Downlight



# Go Smart.

Ultra Shallow Plenum  
.5" - 2.5"

Bluetooth enabled control  
and can fit virtually anywhere



## HALO | WIZ PRO

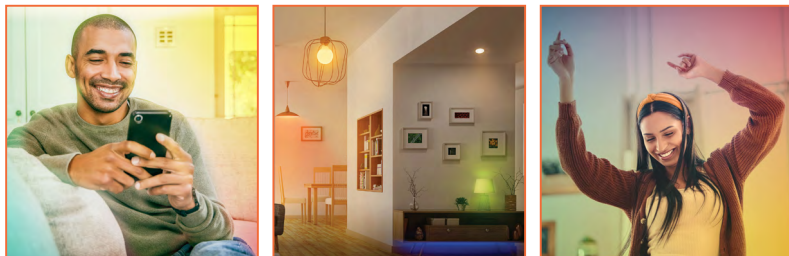
Effortless Smart Lighting for Everyday Living

Illuminate spaces with the perfect lighting. Set the mood with 16 million colors + white tuning using the WIZ App or preferred compatible voice assistant.

16 Million Colors



Tunable White



### HLB-WiZ Series



HLB6-WiZ  
6" Downlight



HLB4-WiZ  
4" Downlight

Voice Control  
and Integrations



works with  
Hey Google

works with  
alexa

works with  
Siri Shortcuts



Works with  
IFTTT

Works with  
SmartThings

# QuickLink

## Low Voltage System



**NO HOUSING NEEDED!**



Scan or Click  
Learn More!

**SAVE UP TO 85%**  
**WIRING TIME**

### Canless Slim



**HLBQL4069FS1E-4PK**  
Phase Cut - 4 Pack Kit w/driver

**HLBQL4069FS1E\***  
4" Round Downlight, prismatic lens



**HLBQL6099FS1E-4PK**  
Phase Cut - 4 Pack Kit w/driver

**HLBQL6099FS1E\***  
6" Round Downlight, prismatic lens

**HLBQL4069FSE010-6PK**  
0-10V - 6 Pack Kit w/driver

**HLBQL4069FSE010\***  
4" Round Downlight, prismatic lens

**HLBQL6099FSE010-6PK**  
0-10V - 6 Pack Kit w/driver

**HLBQL6099FSE010\***  
6" Round Downlight, prismatic lens

### Canless Regressed



**LTQL4069S1EDM-4PK**  
Phase Cut - 4 Pack Kit w/driver

**LTQL4069S1EDM\***  
4" Round Downlight, smooth splay



**LTQL6069S1EDM-4PK**  
Phase Cut - 4 Pack Kit w/driver

**LTQL6069S1EDM\***  
6" Round Downlight, smooth splay



**RLQL4069SE010DM-8PK**  
0-10V - 8 Pack Kit w/driver

**RLQL4069SE010DM\***  
4" Round Downlight, baffle trim



**RLQL6069SE010DM-8PK**  
0-10V - 8 Pack Kit w/driver

**RLQL6069SE010DM\***  
6" Round Downlight, baffle trim

\* Driver not included. Only compatible with the HALO QuickLink system.

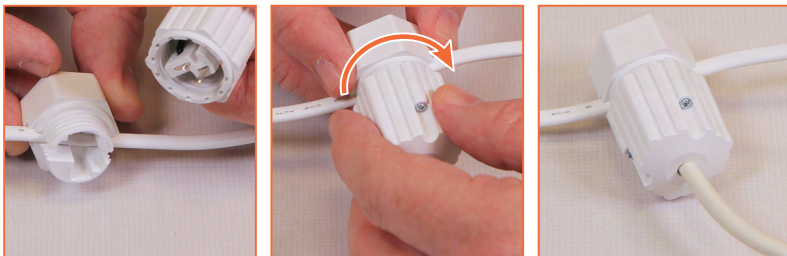
# Installing downlights has never been faster.

QuickLink delivers the fastest downlighting installation HALO has to offer. Installers can power multiple QuickLink lights on the single remote power supply, making it easy and efficient to install energy-saving lighting. Each fixture attaches to the low voltage cable in seconds with QuickLink Twist Connectors. Start with a QuickLink Kit which includes the remote power supply, a low voltage cable, and canless downlights. Then mix and match individual fixtures to complete the project.

## 1 POWER SUPPLY & MULTIPLE FIXTURES



With QuickLink Twist Connectors, each fixture attaches to the low voltage cable in seconds. The flexibility of the system allows the user to mix and match the compatible HALO QuickLink canless fixtures onto the same low voltage cable.



Scan or Click  
Learn More!

QuickLink installation video



The SeleCCTable™ technology puts flexibility at your fingertips. By using the switch located on the driver junction box, the user can choose from a range of color temperatures:

**2700K/3000K/3500K/4000K/5000K**

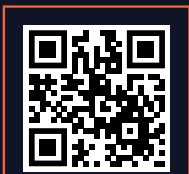
# ML4 Canless

## Simple, compact, accurate.

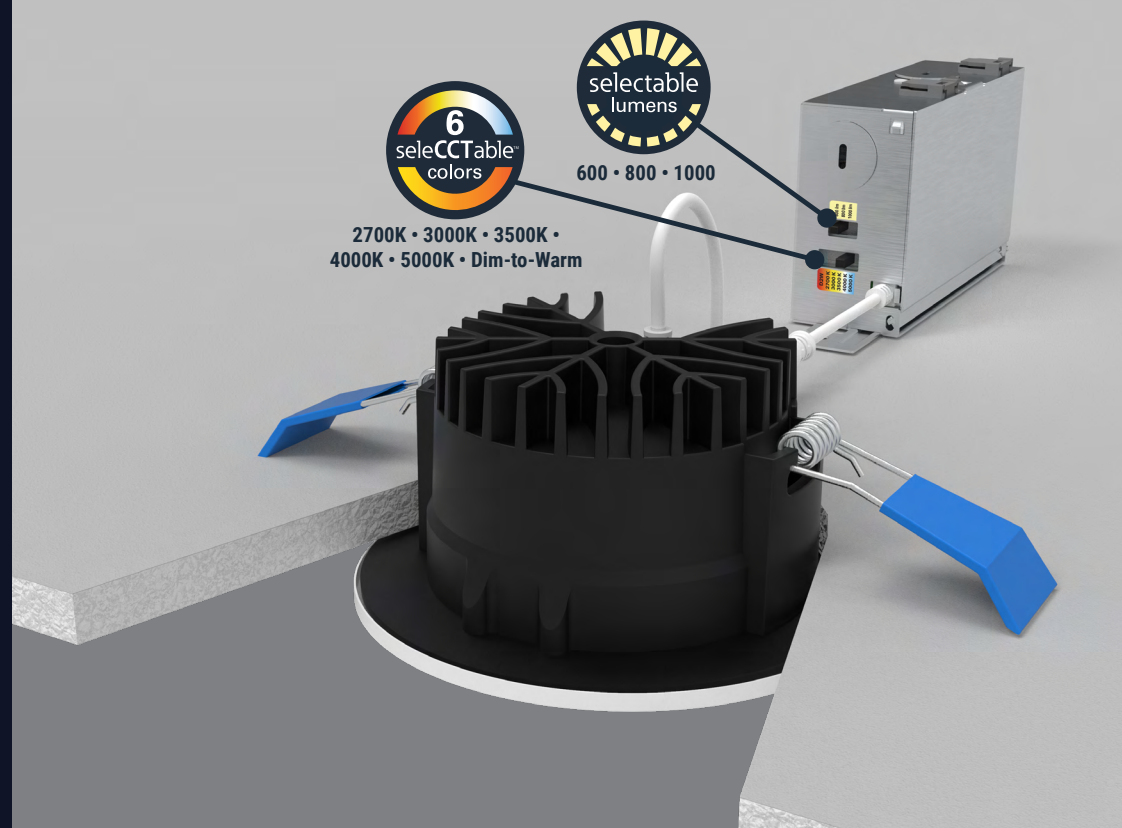
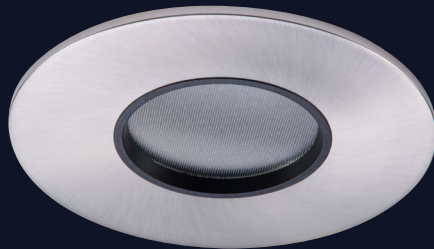
The ML4 system is comprised of an LED module and trim that can be installed in a canless solution. This compact LED module installs from below the ceiling into a 3-3/4" opening.

The TL4 trims are available in three trim types; open, lens, and lens wall wash in a variety of finishes. The trims are attached by powerful rare earth Neodymium magnets; they float on a bubble of magnetic flux keeping the trims held securely in place.

The ML4 delivers powerful beams of light providing optical control and high color quality.



Scan or Click  
Learn More!



## D2W™

The dim-to-warm setting begins at 3000K and dims smoothly to 1800K, creating a rich, warm glow resembling candlelight or the sun on the horizon.

### ML4DM10LSFL9FS1E

4" Canless, Lumen Select (600/800/1000lms), 5CCT selectable, 90CRI, 40° optic, 120V, LE/TE 5% Dim

### ML4DM10LSFL9FSE010

4" Canless, Lumen Select(600/800/1000lms), 5CCT selectable, 90CRI, 40° optic, 120-277V 0-10V 5% Dim

### ML4DM08LSFL95FS1E

4" Canless, Lumen Select(400/600/800lms), 5CCT selectable, 95CRI, 40° optic, 120V LE/TE 5% Dim

### ML4DM06FLD2W1E

4" Canless, 600lms, Selectable D2W, 90CRI, 40° optic 120V LE/TE 5% Dim

*A complete luminaire consists of a fixture fitting + trim, order separately.*

**TL40R**  
3-1/2" round  
conical reflector



**TL40R2GMW**  
matte white flange,  
diffuse lens white reflector

**TL41R**  
2" round  
open pinhole



**TL41RMW**  
matte white flange



**TL41RBN**  
brushed nickel flange



**TL41RBCu**  
brushed copper flange



**TL41RMB**  
matte black flange



**TL41RORB**  
oil rubbed bronze flange

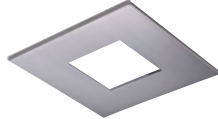


**TL41RGB**  
german bronze flange

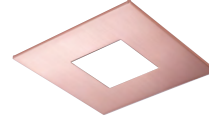
**TL42S**  
2" square  
open pinhole



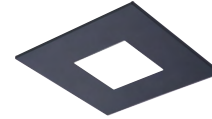
**TL42SMW**  
matte white flange



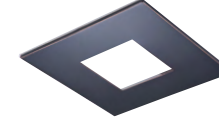
**TL42SBN**  
brushed nickel flange



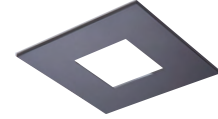
**TL42SBCu**  
brushed copper flange



**TL42SMB**  
matte black flange



**TL42SORB**  
oil rubbed bronze flange



**TL42SGB**  
german bronze flange

**TL43R**  
2" round  
lens pinhole



**TL43R2GMWBB**  
matte white flange,  
white lens frame



**TL43R2GMWBB**  
matte black flange,  
black lens frame



**TL43R2GBNBB**  
brushed nickel flange,  
black lens frame



**TL43R2GBCuBB**  
brushed copper flange,  
black lens frame



**TL43R2GMBBB**  
matte black flange,  
black lens frame

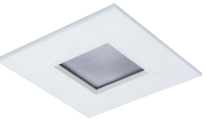


**TL43R2GORBBB**  
oil rubbed bronze flange,  
black lens frame

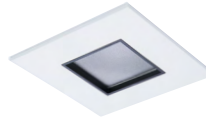


**TL43R2GGBBB**  
german bronze flange,  
black lens frame

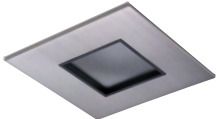
**TL44S**  
2" square  
lens pinhole



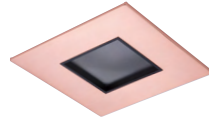
**TL44S2GMWBB**  
matte white flange,  
white lens frame



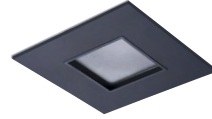
**TL44S2GMWBB**  
matte black flange,  
black lens frame



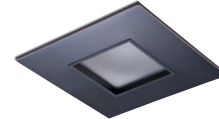
**TL44S2GBNBB**  
brushed nickel flange,  
black lens frame



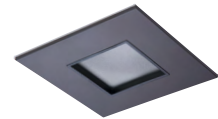
**TL44S2GBCuBB**  
brushed copper flange,  
black lens frame



**TL44S2GMBBB**  
matte black flange,  
black lens frame



**TL44S2GORBBB**  
oil rubbed bronze flange,  
black lens frame



**TL44S2GGBBB**  
german bronze flange,  
black lens frame

**TL45R**  
2" round lens  
wall wash pinhole

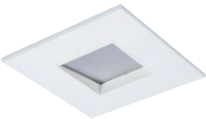


**TL45R6GMWBB**  
matte white flange,  
white lens frame

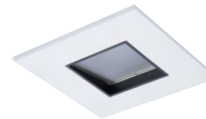


**TL45R6GMWBB**  
matte white flange,  
black lens frame

**TL46S**  
2" square lens  
wall wash pinhole



**TL46S6GMWBB**  
matte white flange,  
white lens frame



**TL46S6GMWBB**  
matte white flange,  
black lens frame

**ML4 optics**

**TIR4D25NFL**  
25 degree  
narrow flood

**TIR4D40FL**  
40 degree  
flood

**TIR4D55WFL**  
55 degree  
wide flood

**TIR4D25AWW**  
25 degree narrow flood  
asymmetric / wall wash



**TIR45MH12PK**  
replacement  
media holder

# Living Spaces

## Kitchen

A well-lit kitchen is a happy kitchen. Provide task lighting over countertops by placing easy-to-install HALO canless recessed lighting 24" from the wall. Since the kitchen is typically quite lived-in, features like adjustable CCT can give it a more homey feel, while HALO Home Bluetooth control adds convenience for multitasking homeowners.



**LT-DM**  
HALO Recessed



**HLB**  
HALO Recessed



 **Bluetooth®**  
**HLB-WiZ**  
6" Downlight



**RL6-DM**  
6" Downlight/Night Light

# Living Spaces

## Bedroom

HALO canless recessed lights are a timeless and versatile choice for bedrooms. They can easily be combined with other fixtures, like ceiling fans or accent lighting, to maximize functionality and draw attention to architectural features. These HALO canless recessed downlights are dimmable at CCT-adjustable, allowing the homeowner to create a serene home sanctuary.



**LT-DM**  
HALO Recessed



**HLB**  
HALO Recessed



 **Bluetooth®**  
**HLB-WiZ**  
6" Downlight



**RL6-DM**  
6" Downlight/Night Light



# Living Spaces

## Living Room

The perfect living room lighting scheme should provide plenty of general lighting while also highlighting design features. For ambient lighting, use one HALO canless recessed downlight for every 4 to 6 square feet of ceiling space. Use directional lighting like the HLA or RA-DM to aim the light towards fireplaces, galleries, or other focal points.



**RL-DM**  
HALO Recessed



**HLB**  
HALO Recessed



**HLA**  
HALO Recessed



**RA-DM**  
HALO Recessed





# Living Spaces

## Bathroom

From the hustle and bustle of morning preparations to that moment of zen when you slip into the tub, bathroom lighting should always meet the moment. HALO canless recessed lighting are safe to use in shower stalls and above tub areas. Plus, they're dimmable, CCT-adjustable, and with HALO Home smart lighting control, highly customizable.




**LT-DM** *Showerlight*  
HALO Recessed



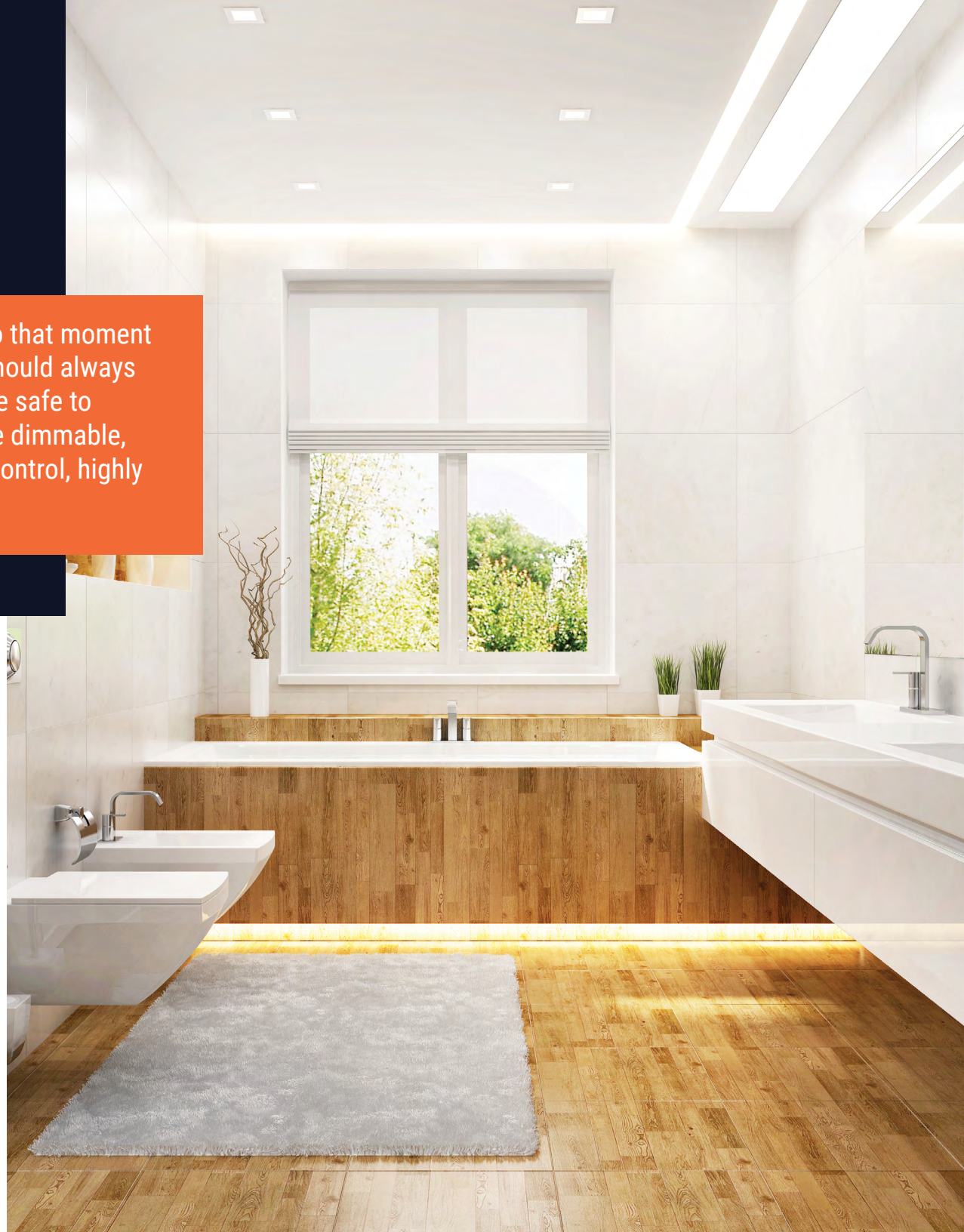
**HLB** *Showerlight*  
HALO Recessed



 **Bluetooth®**  
**HLB-WiZ**  
6" Downlight



**RL6-DM** *Showerlight*  
6" Downlight/Night Light



# Living Spaces

## Closet/Storage

Because LED light fixtures produce less heat, they're preferred over incandescents or fluorescents in storage areas like closets. Easy to install without bulky housing, HALO canless recessed downlights are perfect for new construction or remodel applications. Experts recommend installing them at least 12" away from clothing or other items being stored.



**LT-DM**  
HALO Recessed



**HLB**  
HALO Recessed



 **Bluetooth®**  
**HLB-WiZ**  
6" Downlight



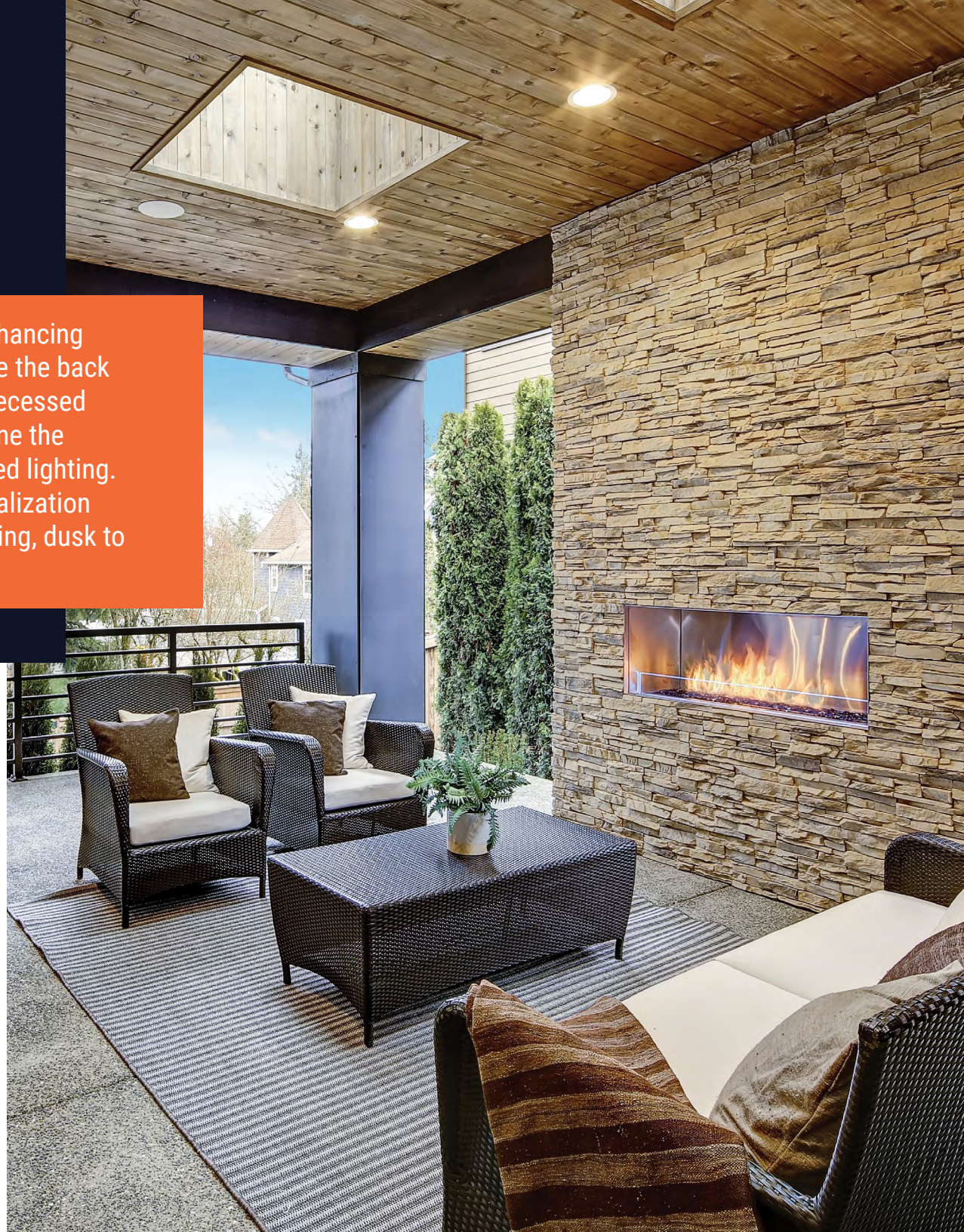
**RL6-DM**  
6" Downlight/Night Light



# Living Spaces

## Back Porch

“Porch lights” aren’t what they used to be. Besides enhancing safety and security outdoors, proper lighting can make the back porch more functional and enjoyable. HALO canless recessed downlights, which are UL damp location-listed, combine the ease of surface mounts with the clean look of recessed lighting. Choose the HALO Home version for enhanced personalization and security features, including indoor/outdoor grouping, dusk to dawn, and “vacation mode.”



**LT-DM**  
HALO Recessed



**HLB**  
HALO Recessed



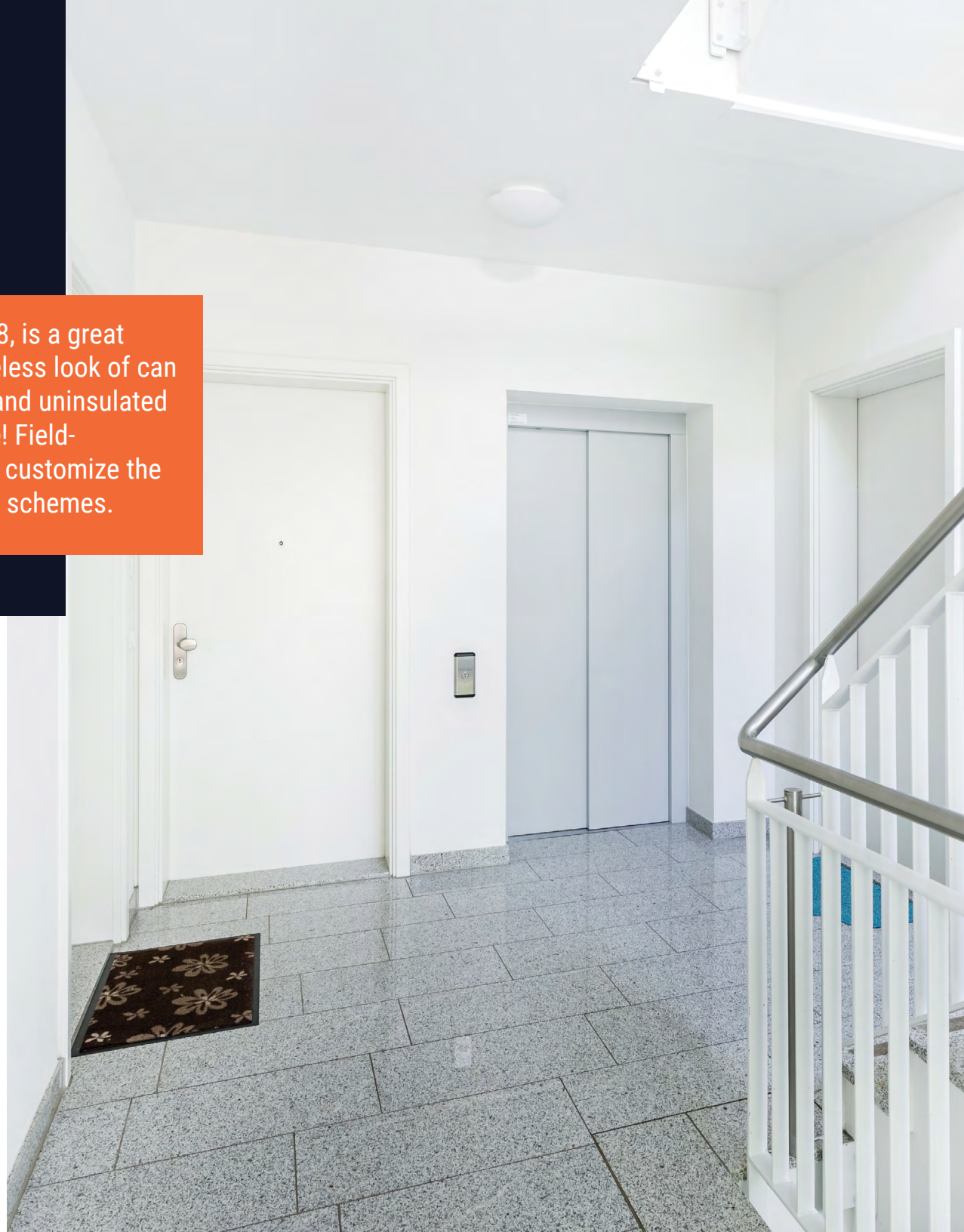
 **Bluetooth®**  
**HLB-WiZ**  
6" Downlight

# Apartment Hallway

IC-rated HALO canless recessed lighting, like the HLB8, is a great addition to the multifamily toolkit. It provides the timeless look of can lighting in a versatile design that's safe for insulated and uninsulated areas. In fact, at ½" thick, it installs virtually anywhere! Field-selectable color temperature and lumens allow you to customize the light to suit different hallway ceiling heights and color schemes.



**HLB8**  
HALO Recessed



# Apartment Lobby

Make a great first impression while enhancing safety in your building entries. HALO canless recessed lighting is designed to provide even, eye-pleasing illumination. While the smooth baffle and high CRI of the LCR make it well-suited for lobbies and other hospitality-focused environments, the HALO portfolio offers a range of energy-saving, easy-to-install direct mounts for multifamily applications.



**LCR**  
HALO Recessed



**HLB8**  
HALO Recessed



**HLB12**  
HALO Recessed



# Apartment Gym

Thoughtful lighting can help gym-goers feel alert and motivated. With HALO canless recessed lighting, it's easy to achieve the proper spacing, light output, and color temperature for a welcoming and glare-free effect. These solutions feature adjustable CCT, with cooler color temperatures for improving focus and energy and warmer options (plus dimming) to promote relaxation.



**LCR**  
HALO Recessed



**HLB8**  
HALO Recessed



**HLB12**  
HALO Recessed



# Apartment Leasing Office

A leasing office is so much more than an office. It's a first impression. Not only does its lighting scheme need to promote productivity and focus like any other workspace, but it needs to give off a certain welcoming and sophisticated vibe. Fortunately, HHALO canless recessed lighting is great at multitasking, with selectable technology and a high-end look that's surprisingly easy to achieve.



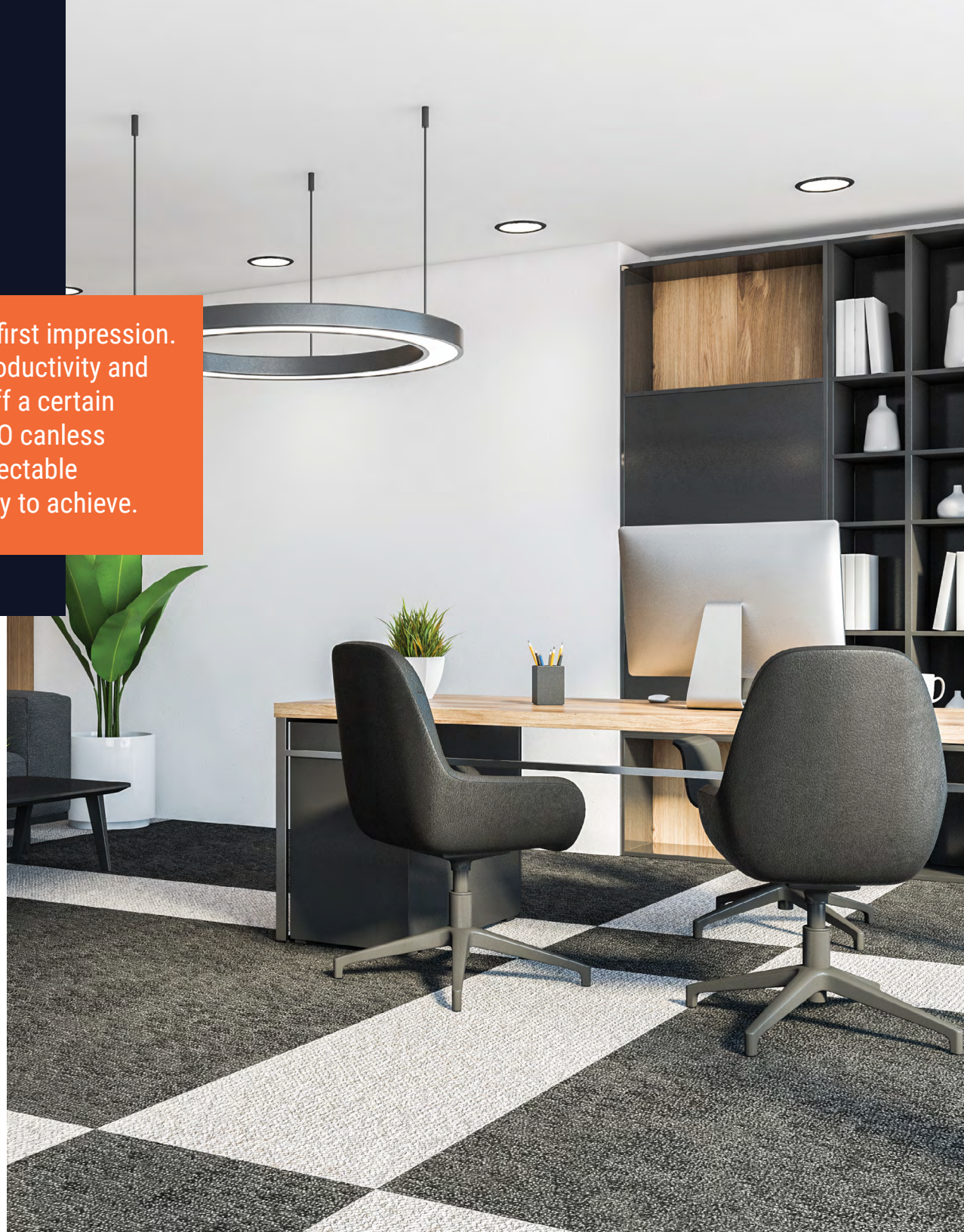
**LCR**  
HALO Recessed



**HLB8**  
HALO Recessed



**HLB12**  
HALO Recessed



# Light Commercial

## Pizza Parlor

Lighting is often the first thing that most restaurant designs get wrong. Too much light and the restaurant loses some of its charm, but insufficient lighting will leave patrons squinting to see the menu. Fortunately, it's hard to go wrong with the HALO canless recessed lighting portfolio. Perfect for achieving even, glare-free lighting, these downlights can stand alone or be layered with pendants and statement pieces.



**LCR**  
HALO Recessed



**HLB UNV**  
HALO Recessed



**RL QuickLink**  
HALO Recessed





# Light Commercial Coffee Shop

Want more customers to linger over coffee and a pastry? Lighting can help. Use a warmer color temperature setting on your CCT-adjustable HALO canless recessed lighting, and be sure to keep the CCT consistent throughout the space. Since these products are easy to install in any type of ceiling, dimmable, and can be spaced precisely to your liking, it's even easier to set the mood to "cozy."



**LCR**  
HALO Recessed



**HLB UNV**  
HALO Recessed



**ML4**  
HALO Recessed



# Light Commercial Clothing Boutique

In small retail applications, choose LED downlights with warm CCT options—like these HALO canless recessed lighting. By allowing customers to browse products in vivid color and creating a friendly, familiar atmosphere, you'll enhance the experience and encourage shoppers to stick around. Canless recessed lighting can be easily paired with under cabinet or accent lighting for a pleasant layered effect.



**LCR**  
HALO Recessed



**HLB UNV**  
HALO Recessed



**ML4**  
HALO Recessed



# Light Commercial Hair Salon

A stylist's work requires extreme precision, from choosing the right shade of hair color to ensuring the angle of each shear is spot-on. You'll want to choose LED downlights with a high CRI, like these solutions. Products like the HLB also feature selectable lumens, providing adequate lighting for any ceiling height. These canless recessed lights are also dimmable and CCT-adjustable, promoting a relaxing client experience.



**LCR**  
HALO Recessed



**HLB UNV**  
HALO Recessed



**ML4**  
HALO Recessed



## Lighting Brands

Ametrix  
AtLite  
Corelite  
Ephesus  
Fail-Safe  
HALO  
HALO Commercial  
Invue  
iO  
Iris  
Lumark  
Lumière  
McGraw-Edison  
Metalux  
MWS  
Neo-Ray  
Portfolio  
RSA  
Shaper  
Shaper PrentaLux - 3D Printed Lighting  
Streetworks  
Sure-Lites  
Telensa

## Controls Brands

Greengate  
Fifth Light

## Connected Lighting Systems and Smart Spaces Platform

WaveLinX



**Cooper Lighting Solutions**  
1121 Highway 74 South  
Peachtree City, GA 30269  
P: 770-486-4800  
[www.cooperlighting.com](http://www.cooperlighting.com)

**Canada Sales**  
5925 McLaughlin Road  
Mississauga, Ontario L5R 1B8  
P: 905-501-3000  
F: 905-501-3172

© 2023 Cooper Lighting Solutions  
All Rights Reserved  
Printed in USA  
Publication No. BR518118EN  
March 22, 2023 2:28 PM

All other trademarks are property  
of their respective owners.

Product availability, specifications,  
and compliances are subject to  
change without notice.