

Connected Buildings
Product Selection Guide

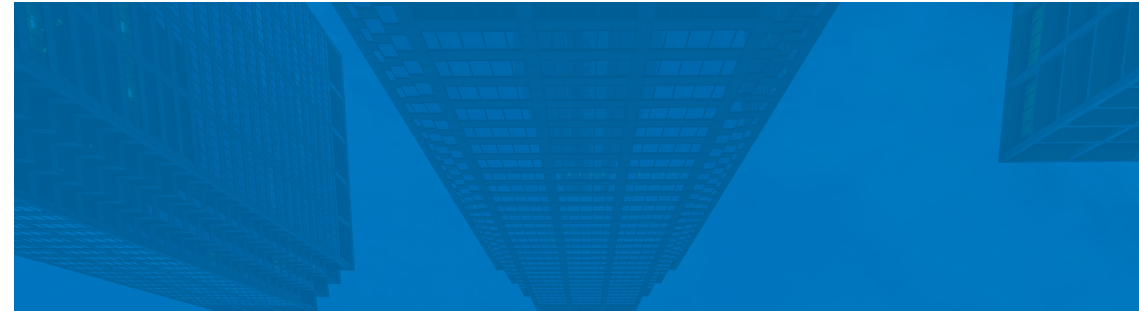


Metalux

Celebrating 50+ years, Metalux offers an extensive line of LED lighting products including recessed, linear and industrial fixtures.

Metalux's complete family of luminaires are dedicated to the latest solid state lighting and driver technology for optimal performance and energy efficiency.

Metalux delivers innovation, quality, product availability, and responsiveness all with an affordable value proposition.



The product selection guides are simple yet powerful tools to help assist with product comparisons and selection based on features, performance and value.

- 2-3 Commercial LED Recessed** - Panels and Troffers
- 4-5 Commercial LED Linear Ambient** - Strips and Wraps
- 6 Industrial LED** - High Bay
- 7 Industrial LED** - Vaportite



Good

Click on products to learn more



		Backlit CGT	Backlit CGTS ²	Edgelit FP	Edgelit FPS	Backlit MMS	Backlit CGTX	Edgelit FPX	Backlit CGSB	Surround SFS
APPLICABILITY ¹	Education	★★★	★★★	★★★	★★★	★★★	★★★	★★★	★★★	★★★
	Office	★★	★★	★★	★★★	★★★	★★★	★★★	★★	★★★
	Healthcare	★	★★	★	★	★★	★★	★★	★★★	★★
	Retail	★★	★★	★★★	★★★	★★★	★★★	★★★	★★	★★★
FEATURES / PERFORMANCE	Sizes	1x4, 2x2, 2x4	1x4, 2x2, 2x4	1x4, 2x2, 2x4	1x4, 2x2, 2x4	1x1, 1x2, 6"x4, 1x4, 2x2, 2x4	1x4, 2x2, 2x4	1x4, 2x2, 2x4	1x4, 2x2, 2x4	1x2, 1x4, 1x8, 2x2, 2x4
	lm/W (Max)	115	159	136	120	145	137	130	140	149
	Lum (Max)	5,300	6,900	7,000	6,500	6,200	10,000	6,400	9,300	8,500
	Life (@60K)	L84	L86	L86	L87	L82	L88	L87	L86	L88
	Lens	Frost, Smooth	Frost, Smooth	Frost, Smooth	Frost, Smooth	Frost, Smooth	Frost - Smooth, Prismatic	Frost, Smooth	Frost, Smooth	Frost, Smooth
	Service from Below	No	No	No	No	Yes in Surface Mount	No	No	Yes	No
	Emergency	Remote	Remote	Remote	Remote	Integrated in Recessed Mount	Integrated	Integrated	Integrated	Remote
	CRI	80+	80+	80+ / 90+	80+	90+	80+ / 90+	80+	80+ / 90+	80+
	Sensor Location	Tile Mount	Tile Mount	Tile Mount	Tile Mount	Tile Mount	Integrated	Integrated	Integrated	Tile Mount
	DLC	Standard	Standard	Standard	Standard	Standard/Premium	Premium	Premium	Standard	Standard/Premium
	Door	No - see CGSB	No - see CGSB	No - see CGSB	No - see CGSB	No - see CGSB	No - see CGSB	No - see CGSB	Yes	No - see CGSB
	Air Venting	No	No	No	No	No	No	No	No	Standard
	Lumen / CCT Select	No	Yes	No	Yes	Yes	No	No	No	Yes
VividTune™	No	No	No	No	No	No	No	No	No	
INTEGRATED CONTROLS	WaveLinx LITE						✓	✓	✓	✓
	WaveLinx PRO						✓	✓	✓	✓

Notes: 1. ★★★ = high applicability, ★★ = medium applicability, ★ = low applicability, blank = non-applicable. 2. CGTS-NUV also available (Canadian market only).

Better

Best

Click on products to learn more



		Center Basket CBRK	Flat Lens GR	Center Basket Achieva ARS	Center Basket Cruze CZS	Cruze ST	Cruze SB	RLN	Ovation	Accord	SkyRidge	Encounter
APPLICABILITY ¹	Education	★★★	★★★	★★★	★★★	★★★	★★★	★★	★★	★	★	★★
	Office	★★	★★	★★	★★★	★★★	★★	★★★★	★★★★	★★★★	★★★★	★★★★
	Healthcare	★	★★	★★	★★	★★	★★★★	★★	★	★★	★★	★★★★
	Retail	★	★★	★★	★★★	★★★	★★	★★	★★★★	★★	★★	★★
FEATURES / PERFORMANCE	Sizes	1x4, 2x2, 2x4	1x4, 2x2, 2x4	1x4, 2x2, 2x4	1x4, 2x2, 2x4	1x4, 2x2, 2x4	1x4, 2x2, 2x4	1x4, 2x2, 2x4	1x4, 2x2, 2x4	1x4, 2x2, 2x4	1x2, 1x4, 2x2, 2x4	1x2, 1x4, 2x2, 2x4, Metric
	lm/W (Max)	168	140	146	156	157	157	139	109	127	150	141
	Lumens (Max)	4,700	18,000	8,000	6,500	17,000	7,500	8,000	5,000	7,300	6,400	7,400
	Life (@60K)	L85	L89	L90	L90	L90	L84	L93	L89	L89	L92	L92
	Lens	Frost, Ribbed	Frost, Prismatic	Round or Square Ribbed	Round or Square, Frost - Ribbed or Smooth, Perf Inlays	Round or Square, Frost - Ribbed or Smooth, Perf Inlays	Round, Frost - Ribbed or Smooth	Frosted Acrylic	Metal Perforated	Frosted Acrylic	Acrylic (WaveStream)	Acrylic (WaveStream)
	Service from Below	Yes	Yes	No	No	No	Yes	Yes	No	Yes	No	No
	Emergency	Integrated	Integrated	Integrated	Integrated	Integrated	Integrated	Integrated	Integrated	Integrated	Integrated	Integrated
	CRI	80+	80+	80+ / 90	80+	80+ / 90	80+ / 90	80+ / 90	80+	80+	80+	80+ / 90
	Sensor Location	Integrated	Integrated	Integrated	Integrated	Integrated	Integrated	Integrated	Tile Mount	Integrated	Integrated	Integrated
	DLC	Premium	Standard / Premium	Standard / Premium	Standard / Premium	Standard / Premium	Premium	Premium	Standard	Premium	Premium	Premium
	Door	No	Yes	No - see Cruze SB	No - see Cruze SB	No - see Cruze SB	Yes	No	No	No	No	No
	Air Venting	Yes	No	No	Yes	Yes	No	No	Yes	Yes	Yes	Yes
Lumen / CCT Select	Yes	Yes	Yes	Yes	Yes	No	Yes	No	No	Yes	No	
VividTune™	No	Tunable White	No	No	Tunable White	Tunable White	Tunable White	No	No	No	Tunable White	
INTEGRATED CONTROLS	WaveLinx LITE	✓	✓	✓	✓	✓	✓	✓	✓	✓	✓	✓
	WaveLinx PRO	✓	✓	✓	✓	✓	✓	✓	✓	✓	✓	✓

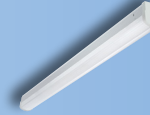
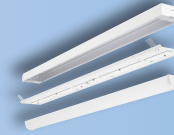
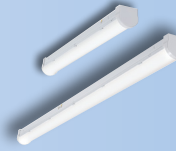
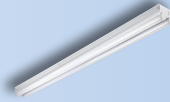
Notes: 1. ★★★ = high applicability, ★★ = medium applicability, ★ = low applicability, blank = non-applicable

Good

Better

Best

Click on products to learn more



		SLES ²	ST	ST2 DIM	SLSTP	SSRK Retrofit	SNX	SRL
APPLICABILITY ¹	Education	★★	★	★★	★★★	★	★★★	★★★
	Office	★	★	★★	★★★	★	★★★	★★★
	Healthcare				★	★	★★	★★
	Retail	★★★	★	★★	★★	★★★	★★★	★★★
	Industrial	★★	★★	★★	★★	★★★	★★★	★★★
	Residential		★★★		★★			
FEATURES / PERFORMANCE	Length	4', 8'	2', 4', 8'	2', 4', 8'	2', 4', 8'	4', 8'	2', 4', 8'	4', 8'
	lm/W (Max)	167 (8ft)	108	122	148	159	176	149
	Lum (Max)	8,700	9,200	9,200	11,900	8,000 / 4 ft.	22,000	11,000
	Life (@60K)	L70/50K ³	L70/50K	L70/50K	L70/50K	L94	L87	L82
	Dimming	N/A	No	0-10V	Triac or 0-10V	0-10V	0-10V, Step, Dali	0-10V, Step, Dali
	Lens	None ⁴	White, Single or Dual Lens	White, Dual Lens	Diffuse, Poly	Frost, Acrylic	Open, Round, FDL, Square, Refl	Frost, Acrylic
	Emergency	Integrated	None	Integrated	Integrated	Integrated	Integrated	Integrated
	CRI	80+	80+	80+	80+	80+	>80 / 90	80+
	Sensor Location	Remote	Remote	Remote	Sensor Kit	N/A	Integrated	Integrated
	DLC	Standard (TLED Lamps only)	Standard	Standard	Standard	Premium	Premium	Premium
	Lumen / CCT Select	No	No	CCT	CCT/Lumen	No	Yes, specific lumen only	No
INTEGRATED CONTROLS	Basic Occupancy				✓	✓	✓	✓
	Stand Alone Daylight / Occupancy					✓	✓	✓
	WaveLinX LITE						✓	✓
	WaveLinX						✓	✓

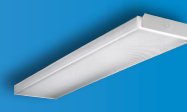
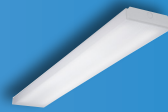
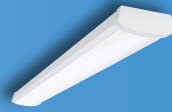
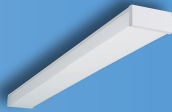
Notes: 1. ★★★ = high applicability, ★★ = medium applicability, ★ = low applicability, blank = non-applicable. 2. w/T8 LED lamps included. 3. TLED lamp tested to B50 L70 requirement. LED lifetime means the length of time (in hours) until half of the LED light sources maintain at least 70% of their initial lumen output (B50, L70). 4. TLED CorePro lamp is glass tube. TLED MasterClass lamp is shatter resistant plastic.

Good

Better

Best

Click on products
to learn more



		WP	NWS	WNLED	WSNLED	BCLED	AWS / AWWS	SWLED
APPLICABILITY ¹	Education	★★	★★★	★★★	★★	★★	★★★	★★★
	Office	★	★★	★★	★★★	★	★★★	★★★
	Healthcare	★	★	★	★★	★★	★★	★
	Retail	★	★★	★	★★★	★	★★★	★
	Industrial	★	★★	★★			★	★★
	Residential	★★★		★	★	★	★★	
FEATURES / PERFORMANCE	Sizes	2' and 4', 5.1" wide	2', 4' / 5.3" wide	2', 4'	2', 4'	2', 4'	2', 4', 8' / 5.5" & 10" Wide	4'
	lm/W (Max)	114	129	118	108	120	165	150
	Lum (Max)	3,400	4,900	5,000	6,500	4,800	13,000	8,000
	Life (@60K)	L70/50K	L82	L88	L87	L82	L90	L91
	Lens	Prismatic Acrylic	Diffuse, Acrylic	Frost, Acrylic	Frost + Film, Acrylic	Frost, Smooth	(Vandal Resistant) Ribbed Frost, Polycarb	(Vandal Resistant) Frost, Acrylic
	Emergency	No	Remote	Integrated	Integrated	Integrated	Integrated	Integrated
	CRI	80+	80+	80+	80+	80+	80+, 90+	80+
	Row Mount	N/A	Yes	Yes	Yes	Yes	Yes	No
	Sensor Location	N/A	Integral, Microwave	N/A	N/A	N/A	Integrated	Integrated
	DLC	Standard	DLC, Title 24 Non-Res	Standard	Standard	None	DLC, Title 24 Res	Standard
	Lumen / CCT Select	No	CCT/Lumen	No	No	No	CCT/Lumen	No
INTEGRATED CONTROLS	Basic Occupancy		✓				✓	✓
	Stand Alone Daylight / Occupancy						✓	✓
	WaveLinx LITE						✓	✓
	WaveLinx						✓	✓

Notes: 1. ★★★ = high applicability, ★★ = medium applicability, ★ = low applicability, blank = non-applicable

Good

Better

Best

Click on products to learn more



		LHBS	SPHB	VHB	UHBS	CZL	Steeler	OHB(L)	Benchmark
APPLICABILITY ¹	Big Box Retail	★	★★★	★	★★	★★★	★★	★★★	★
	Sports / Recreation	★★	★★	★★	★★	★	★★★	★★★	★★
	Warehouses	★★★	★★★	★★★	★★	★★	★★★	★★★	
	Manufacturing	★★	★★	★★	★★	★	★★★	★★★	★★★
	Cold Storage	★	★★	★★★	★	★	★	★★★	★★
	Large Indoor		★	★			★★	★★★	★★
	Complex Environments			★	★★		★		★★★
FEATURES / PERFORMANCE	Lumen Range	12,000 - 36,000	9,000 - 60,000	9,000 - 48,000	12,000 - 36,000	5,000 - 32,000	9,000 - 30,000	9,000 - 100,000	12,000 - 70,000
	Selectable	Lumens/CCT	Lumens/CCT	Lumens	Lumens/CCT				
	Efficacy (Max)	160 lm/W	172 lm/W	164 lm/W	165 lm/W	176 lm/W	152 lm/W	205 lm/W	181 lm/W
	CRI	80	70, 80, 90	70, 80, 90	80	80, 90	80	70, 80, 90	70, 80
	Distribution	M	N, M, W	N, W	M	Multiple	N, M, W	N, M, W	N, M, W
	Sizes	13", 14.2", 19.7"	18", 26", 42"	< 2'	13"/15" Dia	4', 8'	17" Dia	Scalable	17", 25" Dia
	Housing ²	CRS / Diecast	CRS	CRS / Extruded	Diecast	CRS	CRS / Diecast	CRS	Diecast
	Lensing	Acrylic	Polycarbonate	Polycarbonate	Polycarbonate	Multiple	Polycarbonate	Acrylic	Acrylic
	Uplight	None	Optional	None	None	Optional	Up to 10%	None	None
	Life (@ 60K hrs)	L85	L88	L83	L91	L89	L88	L96	L92
	Ambient Range	-20C to 50C	-40C to 55C	-40C to 55C	-40C to 50C	-40C to 65C	-40C to 55C	-40C to 55C	-40C to 65C
	Emergency	Rapid Response	Integrated	Remote	✓	Integrated	Remote	Integrated	Remote
	Ratings	Damp	Damp	Damp	IP65	Damp	IP65 Optics	Damp	IP66
DLC	Premium	Premium	Standard, Premium	Premium	Premium	Premium	Premium	Premium	
INTEGRATED CONTROLS	Basic Occupancy	Rapid Response		✓		✓	✓	✓	✓
	Stand Alone Daylight / Occupancy	✓	✓	✓	✓	✓	✓	✓	✓
	WaveLinx	✓	✓	✓		✓	✓	✓	✓
	Enlighted ³		✓	✓		✓	✓	✓	✓

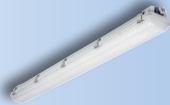
Notes: 1. ★★★ = high applicability, ★★ = medium applicability, ★ = low applicability, blank = non-applicable
 2. CRS=Cold-rolled Steel, Extruded=Extruded Aluminum, Diecast=Diecast Aluminum.
 3. Location data for asset tracking.

Good

Better

Best

Click on products
to learn more



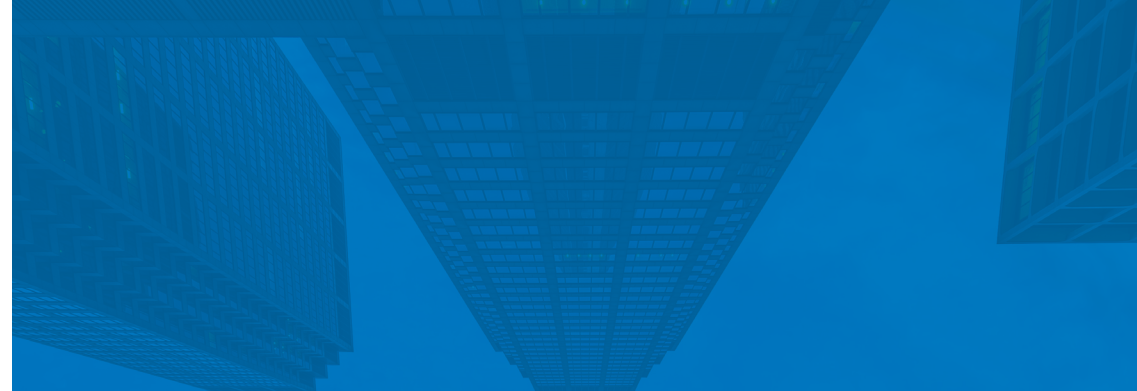
		APVT-S	VT2	VT3	VT4S	VT4
APPLICABILITY ¹	Canopy	★★	★★	★★		
	Storage	★★★	★★★	★★		
	Parking Garage	★★	★★	★★★		
	Warehouse	★★	★★★	★★★	★	★
	Food Processing	★★	★★	★★★	★★	★★
	Manufacturing		★★	★★	★★★	★★★
	Complex Environments		★		★★★	★★★
FEATURES / PERFORMANCE	Lumen Range	3,000 - 11,600	2,000 - 22,000	2,000 - 8,000	9,000 - 18,000	9,000 - 30,000
	Selectable	Lumens / CCT	N/A	Lumens / CCT	N/A	N/A
	Efficacy (Max)	151 lm/W	150 lm/W	154 lm/W	165 lm/W	146 lm/W
	Distribution ²	G	G, W	G, W, P	G	G
	Sizes	4', 8'	2', 4', 8'	2', 4'	2'	4'
	Housing	Polycarbonate	Fiberglass/Polyester	Fiberglass/Polyester	Fiberglass	Fiberglass
	Lensing	Polycarbonate	DR Acrylic or Polycarb	DR Acrylic or Polycarb	DR Acrylic or Polycarb	DR Acrylic or Polycarb
	Wet Location	Yes	Yes	Yes	Yes	Yes
	IP Rating	IP65	None	IP65, 66, 67	IP65, 66, 67, 69	IP65, 67
	NSF	None	Yes	Yes	Yes	Yes
	NEMA 4X	None	None	None	Yes	Yes
	Life (@60K hrs)	L89	L91	L91	L91	L92
	Ambient Range	-20C to 40C	-40C to 35C	-40C to 50C	-40C to 40C	-40C to 40C
	Emergency	Yes	Yes	Yes	Yes	Yes
Vandal Resistant	None	Optional	Optional	Optional	Optional	
DLC	Standard	Premium	Premium	Premium	Premium	
INTEGRATED CONTROLS	Basic Occupancy	✓	✓	✓	✓	✓
	Stand Alone Daylight / Occupancy	✓	✓	✓	✓	✓
	WaveLinx	✓		✓		✓
	LumaWatt Pro ³					

Notes: 1. ★★★ = high applicability, ★★ = medium applicability, ★ = low applicability, blank = non-applicable
 2. G=General, W=Wide, P=Parking Garage.
 3. Location data for asset tracking.

Corelite Neo-Ray

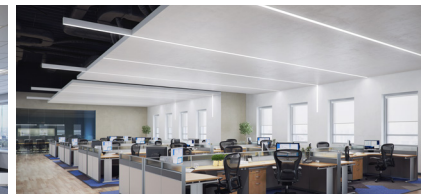
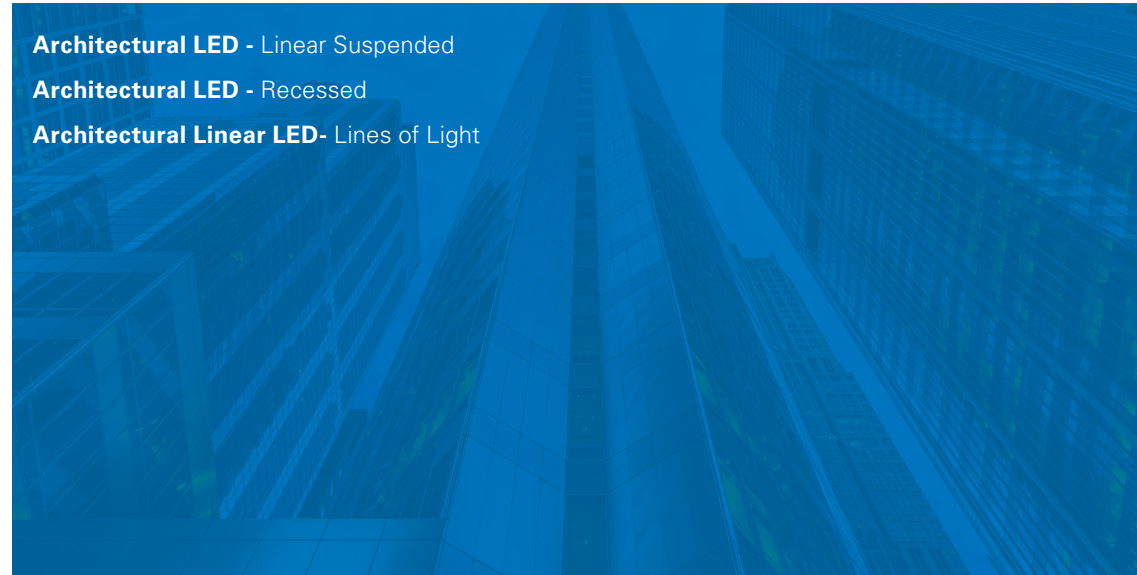
Corelite and Neo-Ray offer a unique array of high performance LED luminaires perfectly suited for today's architectural interior environments.

Combining modern details and high optical performance, Corelite and Neo-Ray's innovative approach to linear, recessed and surface-mounted luminaires make it the ultimate solution for applications with both demanding energy requirements and uncompromising aesthetics.



The product selection guides are simple yet powerful tools to help assist with product comparisons and selection based on features, performance and value.

- 9-10** **Architectural LED** - Linear Suspended
- 11** **Architectural LED** - Recessed
- 12** **Architectural Linear LED**- Lines of Light



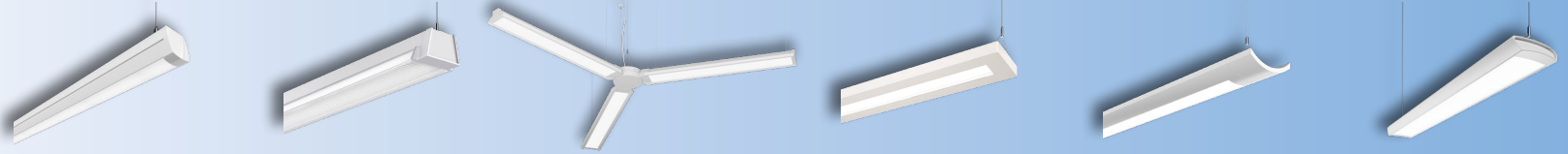
Architectural LED

Linear Suspended

Good

Better

Click on products to learn more



		Hugo	RZL	WSLA	Jaylum	Iridium i3	Continua CTA
APPLICABILITY	Education	★★★	★★	★★	★★★	★★★	★★★
	Office	★★	★	★★★	★★★	★★	★★
	Healthcare	★★	★★	★★	★★	★★	★★
	Retail	★★★	★★★	★★★	★	★	★★
FEATURES / PERFORMANCE	Construction	Extruded Aluminum	Cold Rolled Steel	Steel/Extruded Aluminum	Cold Rolled Steel	Cold Rolled Steel	Extruded Aluminum
	Lengths	4', 8', 12', Cont.	4', 8', 12', Cont.	4', 8', Cont.	4', 8', Cont.	4', 8', Cont.	4', 8', 12', Cont.
	Pattern / Layout	Straight	Straight	Straight, Intersection (Up to 6-way with hub)	Straight	Straight	Straight
	lm/W (Max)	145	135	133	157	158	147
	Lumens (Max)	8000 (2000 lms/ft)	8800 (2200 lms/ft)	8000 (2000 lms/ft)	8000 (2000 lms/ft)	8000 (2000 lms/ft)	6000 (1500 lms/ft)
	Up/Down % Options	2	2	3	5	5	4+
	CIE Type	Direct, Semi-Direct	Direct, Semi-Direct	Direct, Semi-Direct	Direct/Indirect	Direct/Indirect	Direct, Direct/Indirect
	Life (@60K)	L85	L85	L93	L93	L93	L84
	Shielding	Frost - Smooth, Drop Lens, Baffle	Frost -Linear Prismatic, Baffle	WaveStream - Acrylic	Frost - Smooth	Frost - Smooth	Frost - Continuous Roll Lens
	Companion Family Fixtures	Surface	Surface	Surface	Wall, Sconce	-	Wall
	Driver Location	Integral	Integral	Integral	Integral	Integral	Integral
	Emergency	Integrated	Integrated	Integrated	Integrated	Integrated	Integrated
	CRI	80+ / 90	80+ / 90	80+ / 90	80+ / 90	80+ / 90	80+ / 90
	Sensor Location	Integrated, Side Mount	Integrated	Integrated, Fixture or Hub	Integrated	Integrated	Integrated, Side Mount
DLC	Premium	Premium	Premium	Premium	None	Premium	
VividTune™	No	No	No	Tunable White	Tunable White	No	
INTEGRATED CONTROLS	Stand Alone Daylight / Occupancy		✓	✓	✓	✓	
	WaveLinx Lite	✓	✓	✓	✓	✓	✓
	WaveLinx	✓	✓	✓	✓	✓	✓
	Enlighted	✓	✓	✓	✓	✓	✓
	DLVP						

Notes: 1. ★★★ = high applicability, ★★ = medium applicability, ★ = low applicability, blank = non-applicable

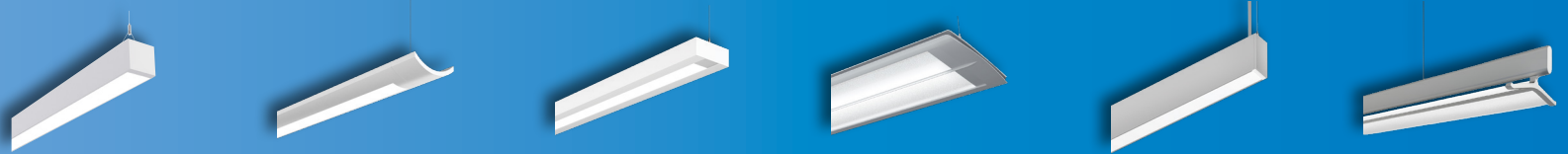
Architectural LED

Linear Suspended (continued)

Metalux | Corelite | Neo-Ray

Best

Click on products to learn more



		Continua SQ4	Iridium i2 WaveStream	Element /Loft / Vertechs WaveStream	Divide	Define	Converge
APPLICABILITY	Education	★★★	★★★	★★★	★★	★★	★★★
	Office	★★★	★★	★★	★★★	★★★	★★★
	Healthcare	★★	★★	★★	★	★★	★
	Retail	★★	★	★	★★	★	★★
FEATURES / PERFORMANCE	Construction	Extruded Aluminum	Cold Rolled Steel	Extruded Aluminum	Extruded Aluminum	Extruded Aluminum	Extruded Aluminum
	Lengths	2', 4', 6', 8', 12', Cont.	4', 8', Cont.	4', 8', 12', Cont.	4', 8', Cont.	2' - 12', Cont.	4', 8', Cont.
	Pattern / Layout	Straight	Straight	Straight	Straight	Straight, Corners, Intersection	Straight
	lm/W (Max)	147	114	116	140	164	119
	Lumens (Max)	10,800+ lm (2,700+ lms/ft)	7200 (1800 lms/ft)	7200 (1800 lms/ft)	6000 (1500 lms/ft)	9900 (2475 lms/ft)	6700 (1700 lms/ft)
	Up/Down % Options	28+	3	3	2	∞	3
	CIE Type	Direct, Direct/Indirect, Indirect	Direct, Direct/Indirect	Direct, Direct/Indirect	Direct, Direct/Indirect	Direct, Direct/Indirect, Indirect	Direct, Direct/Indirect
	Life (@60K)	L84	L81	L81	L87	L90	L85
	Shielding	Frost - Continuous Roll Lens Black/White Louvered Baffle	Frost - Linear Prismatic	Frost - Smooth	WaveStream - Acrylic Specular, Diffuse	Frost - Smooth, Drop & Regressed, Asymmetric and Batwing Lens	WaveStream - Acrylic Diffuse
	Companion Family Fixtures	Recessed, Wall	-	-	Surface, Wall, Recessed	Surface, Wall, Recessed, Perimeter	-
	Driver Location	Integral	Integral	Integral	Integral	Integral	Remote w/ Luxwire
	Emergency	Integrated	Integrated	Integrated	Integrated	Integrated	Remote
	CRI	80+ / 90	80+ / 90	80+ / 90	80+ / 90	80+ / 90	80+ / 90
	Sensor Location	Integrated, Endcap/Side Mount	Integrated	Integrated	Integrated	Integrated	Tile Mount
DLC	Premium	Standard	Standard	Premium	Premium	None	
VividTune™	Tunable White	No	No	No	Tunable White	No	
INTEGRATED CONTROLS	Stand Alone Daylight / Occupancy		✓	✓		✓	✓
	WaveLinx Lite	✓			✓	✓	
	WaveLinx	✓	✓	✓	✓	✓	✓
	Enlighted	✓	✓	✓	✓	✓	✓
	DLVP						✓

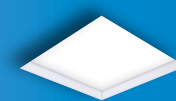
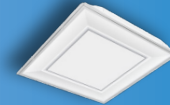
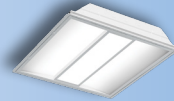
Notes: 1. ★★★ = high applicability, ★★ = medium applicability, ★ = low applicability, blank = non-applicable

Good

Better

Best

Click on products to learn more



		Class RX/ZX	Class D3X	Class R2X	Bridge	Perceive	InDepth	Divide
APPLICABILITY	Education	★★★	★★	★★★	★★	★★★	★★★	★★
	Office	★★★	★★★	★★★	★★★	★★★	★★★	★★★
	Healthcare	★	★★	★★★	★	★★★	★★	★★★
	Retail	★★	★★	★★	★★	★★	★★	★
FEATURES / PERFORMANCE	Sizes	1x4, 2x2, 2x4	1x4, 2x2, 2x4	1x4, 2x2, 2x4, Metric	1x4, 2x2, 2x4, Metric	1x4, 2x2, 2x4	1x4, 2x2, 2x4, 4x4	1x4, 2x2, 2x4
	lm/W (Max)	145	139	134	118	137	127	137
	Lumens (Max)	7600	7800	8000	7300	9,000	9000	7500
	Life (@60K)	L94	L93	L87	L80	L85	L84	L87
	Lens	Round (R), Flat (Z) Frost - Smooth	Frost - Smooth, Perf Inlays	Round (R), Frost - Smooth	Acrylic (Wavestream), Perf Inlays	Acrylic (Perceive Optics)	1", 2" Cube Regress 1", 2", 3" Cube Drop 2" Single & Double Curve Regress & Drop Sweep Regress & Drop	Acrylic (Wavestream), Specular, Diffuse
	Emergency	Integrated	Integrated	Integrated	Integrated	Integrated	Integrated, Indicator is Remote	Integrated
	CRI	80+ / 90	80+ / 90	80+ / 90	80+ / 90	80+ / 90	80+	80+ / 90
	Sensor Location	Integrated	Integrated	Tile Mount	Integrated	Integrated	Tile Mount	Integrated
	DLC	Standard	Standard	Standard	Standard	Premium	Premium	Premium
	Air Return	Yes	None	Yes	Yes, concealed	None	No	None
	VividTune™	Tunable White	Tunable White	No	No	Yes	No	No
INTEGRATED CONTROLS	WaveLinx Lite	✓	✓		✓	✓	✓	
	WaveLinx Pro	✓	✓		✓	✓	✓	✓
	WaveLinx, No Sensor	✓	✓		✓	✓	✓	
	Enlighted	✓	✓	✓	✓	✓	✓	✓
	DLVP	✓	✓		✓	✓	✓	

Notes: 1. ★★★ = high applicability, ★★ = medium applicability, ★ = low applicability, blank = non-applicable

Architectural Linear LED

Lines of Light

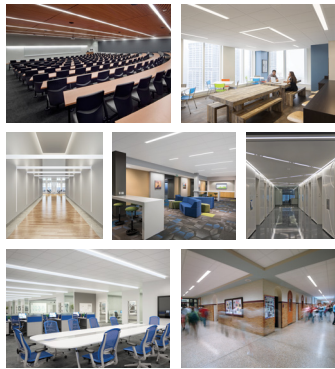
Metalux | Corelite | Neo-Ray

Good

Better

Best

Whether lighting contemporary architectural spaces or general area lighting, **Cooper Lighting Solution's architectural linear LED** products offer a complete family of innovative, affordable, and energy saving LED solutions for your next project.



Click on products to learn more

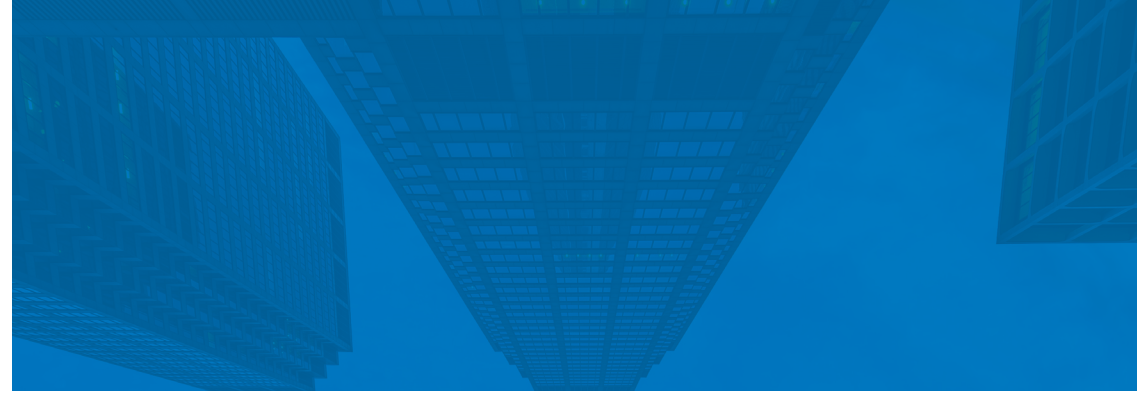
		Metalux RBG	Metalux RCG	Corelite CL	Neo-Ray Define Standard	Neo-Ray Define Premium
APPLICABILITY¹	Office	★★	★★	★★	★★★	★★★
	Secondary Education	★★	★★	★★	★★★	★★
	Primary Education	★★★	★★★	★★★	★★	★
	Healthcare	★★	★	★	★★	★★★
	Tenant Improvement	★★★	★★★	★★★	★★	★
FEATURES / PERFORMANCE	Apertures	4"	3"	2", 4"	1.5", 2", 3", 4", 5"	1.5", 2", 3", 4", 5"
	Sizes	Fixed 2', 4', 8'	4', 8'	4', 8' + Continuous Runs	2'-12' + Continuous Runs	2'-12' + Continuous Runs
	Length Resolution	Fixed	Fixed	4' Increments	1" Increments	1" Increments
	Installation Type	Ceiling, Wall	Ceiling	Ceiling	Ceiling, Wall, Perimeter	Ceiling, Wall, Perimeter
	Configuration Geometry	Straight	Straight	Straight	Straight, Corners, Intersection	Straight, Corners, Intersection
	Compatible Family Fixtures	Surface/Susp & Drywall Kits	N/A	N/A	Suspended, Surface, Wall	Suspended, Surface, Wall
	lm/W (Max)	115	121	124	127	141
	Lms/ft (Max)	1,000	1,000	1,200	1,400	1,500
	Standard Lumen Levels	3	4	5	5 + Custom	5 + Custom
	Lens	Flush Frosted	Flush Frosted, Asymmetric	Flush Frosted, Asymmetric	Flush & Drop Frosted, Asymmetric, Louver	Flush & Drop Frosted, Asymmetric, Louver
	Emergency	Integrated, Remote Switch	Integrated	Integrated	Integrated	Integrated
	CRI	80+	80 Standard, 90 Optional	80 Standard, 90 Optional	80 Standard, 90 Optional	80 Standard, 90 Optional
	Ceiling Integration / Flange Type	Standard T-Grid, Gypsum	Standard T-Grid, Gypsum	6 Common Architectural Systems	>12 Architectural Ceiling Systems	>12 Architectural Ceiling Systems
	DLC	Standard	Standard	Standard	Standard & Premium	Standard & Premium
	VividTune™	No	No	No	No	Tunable White
INTEGRATED CONTROLS	WaveLinx, Enlighted, DLVP, Stand Alone	Integrated or Tile Mount	Integrated	Integrated	Integrated or Tile Mount	Integrated or Tile Mount
	Integral Downlights	N/A	N/A	N/A	Optional Fixed or Adjustable	Optional Fixed or Adjustable

Notes: 1. ★★★ = high applicability, ★★ = medium applicability, ★ = low applicability, blank = non-applicable

Fail-Safe

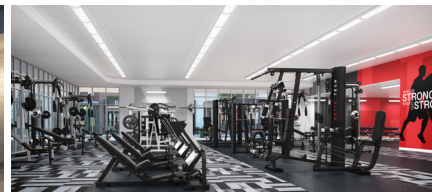
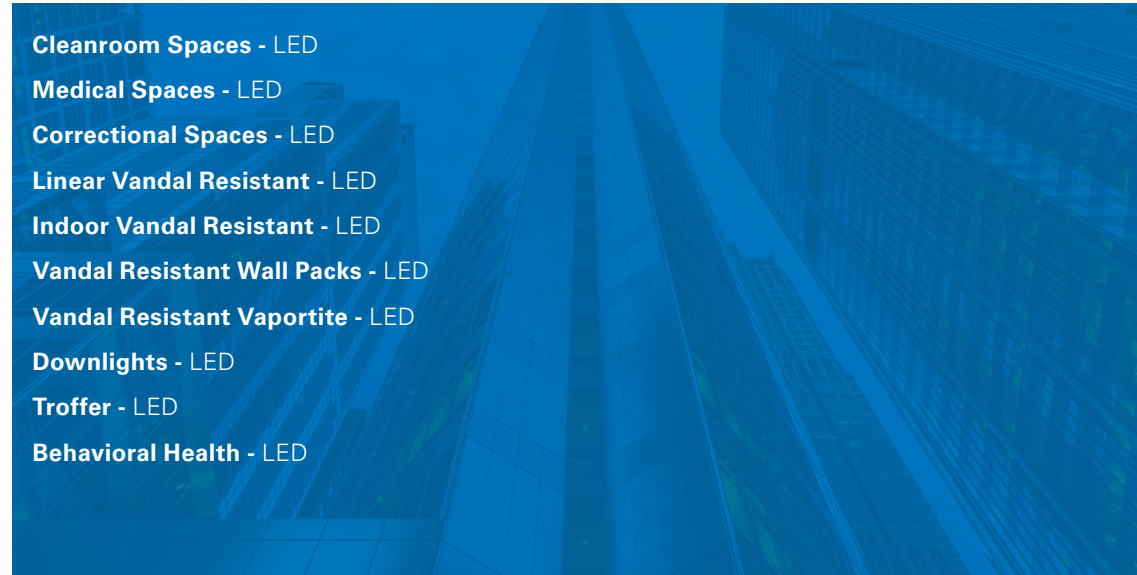
Fail-Safe is a leading provider of specialty grade lighting products designed to perform in a wide variety of complex environments.

Fail-Safe's complete family of luminaires are designed to meet the most demanding applications needs in medical / healthcare, vandal resistant, correctional, cleanroom, and specialty / custom lighting.



The product selection guides are simple yet powerful tools to help assist with product comparisons and selection based on features, performance and value.

- 14 **Cleanroom Spaces - LED**
- 15, 16 **Medical Spaces - LED**
- 17, 18 **Correctional Spaces - LED**
- 19 **Linear Vandal Resistant - LED**
- 20 **Indoor Vandal Resistant - LED**
- 21 **Vandal Resistant Wall Packs - LED**
- 22 **Vandal Resistant Vaportite - LED**
- 23 **Downlights - LED**
- 24 **Troffer - LED**
- 25 **Behavioral Health - LED**





Cleanroom Ratings

- ISO standard ratings (1-9) are used to identify products suitable for those cleanroom rated conditions.
- FED-STD-209E has been replaced by ISO 14644-1, but is still referenced in some specifications.
- For both systems, lower numbers correspond to stricter cleanroom ratings.



Hose Down Ratings

- IP 65 is low pressure hose down.
- IP 66 is high pressure hose down.
- First digit signifies dust ingress protection rating (1-6) and second digit represents liquid ingress protection (1-6 for hosedown). In both cases, the higher the number, the better the seal on the fixture.



NSF Ratings

- NSF (National Sanitation Foundation) provides certified product for use in commercial food processing applications.
- NSF rating can serve as a good indicator of the ability to easily clean/wipe down products.



Narrow Spectrum Illumination

- Red light is used in vivarium (enclosed structure for animal observation or research) applications.
- Green light is used in operating rooms.
- Amber and Yellow are used in various industrial processes.

Click on products to learn more



	CFA	FLD4B	FLD6B	FSP	FCZ	ENW/ENC	FSN	CLM	CLP
Mounting	Surface	Recessed	Recessed	Recessed	Recessed	Recessed	Recessed	Recessed / Surface	Recessed / Surface
ISO Rating	3		5	5	5	5	5	5	5
FED-STD-209E	1		100	100	100	100	100	100	100
Max Lumens	4,100	5,300	6,600	6,400	7,500	7,000	4,121 (4ft)	24,000	24,000
Sizes	2', 3', 4', 8'	4" Round	6" Round	1x4, 2x2, 2x4	1x4, 2x2, 2x4	1x2, 1x4, 2x2, 2x4	Fixed 2', 4', 8'	1x2, 1x4, 2x2, 2x4	1x2, 1x4, 2x2, 2x4
UL Rating	Wet Location	Wet Location	Wet Location	Wet Location	Wet Location	Wet Location	Wet Location	Wet Location	Wet Location
IP Rating		IP65/IP66	IP65/IP66	IP65/IP66	IP65	IP66	IP66	IP65	IP66
NSF		Optional	Optional	Standard	Standard	Standard	Standard	Standard	Standard
Red	Optional							Optional	Optional
Green	Optional							Upon Request	Upon Request
Amber	Optional							Upon Request	Upon Request
Yellow	Upon Request							Upon Request	Upon Request

Patient rooms



Multi-function vs multi-compartment

- Multi-function fixtures have a variety of functions and light outputs in a single fixture.
- Multi-compartment fixtures place each function in a distinctly separate compartment.

Multiple lights in one package

- Patient bed lights need to perform a variety of functions within a single fixture.
- Typical functions include ambient, exam, reading, nightlight, and chart light.

Mounting

- Patient bed lights can be ceiling mounted above or beside the bed, or to the headwall.

Operating rooms



Operating room layout

- Troffers typically used to form high lumen perimeter around operating table.
- Downlights typically used around perimeter of operating theater.

MIL-STD-461-G

- Rated to provide high level of protection against radiated and conducted electromagnetic interference (EMI).
- Protects certain sensitive equipment used in some operating rooms.

Green LEDs for auxiliary lighting

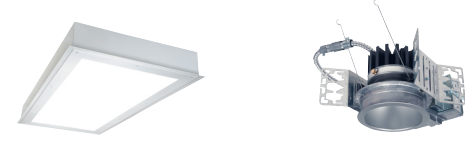
- Green LEDs used as auxiliary and supplemental lighting to primary white LEDs. If requested by the surgical staff, green LEDs are available for specification.

Click on products to learn more



	APR	APN	MPBL
Sizes	2' x 2', 2' x 4'	6" x 48", 6" x 60", 6" x 72"	24", 36", 48"
Mounting	Recessed ceiling (above bed)	Ceiling (beside bed)	Wall Mount
Max lumens	19,500	6,000	12,650
UL Location Rating	Damp (Wet optional)	Damp (Wet optional)	Damp
Wipedown	Standard	Standard	Standard
Tamperproof	CP250 lens optional	CP250 lens optional	
CRI	80, 90	80, 90	80, 90

Click on products to learn more



	ORL	FLD6B/OR
Sizes	1' x 4', 2' x 2', 2' x 4'	6" round
Mounting	Recessed troffer	Recessed downlight
Max lumens	28,000	6,600
UL Location Rating	Wet	Wet
IP Rating	IP66	IP65 (IP66 optional)
Wipedown	Standard	Standard
NSF	Standard	Optional
CRI	80, 90	80, 90, 97
MIL-STD-461-G	Optional	Optional
Green LEDs	Optional	

Behavioral health



Form and function

- Fixtures should have aesthetic appeal while maintaining high structural security.
- Continue visual themes from non-behavioral health areas.

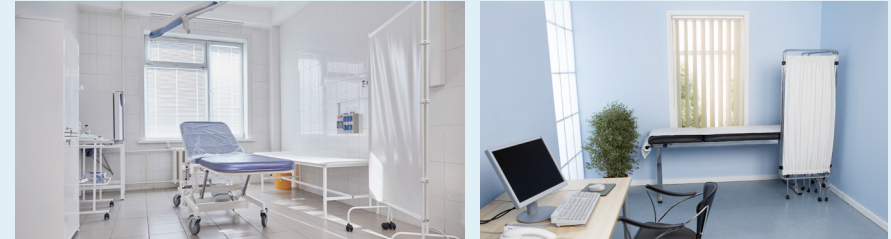
Self harm resistant

- Designed to protect against self harm by patients.
- Polycarbonate lens and tamperproof hardware used to withstand high abuse.

Disease prevention and control

- Antimicrobial Matte White paint finish protects against disease propagation.

Exam rooms



High light levels and light quality

- High lumen levels needed for performing patient examinations.
- High CRI available for aid in visual evaluation of patient and symptoms.

Ease of cleaning

- Wipedown design and NSF (National Sanitation Foundation) rating make regular cleaning of fixtures easier.

Disease prevention and control

- Antimicrobial Matte White paint finish protects against disease propagation.

Click on products to learn more



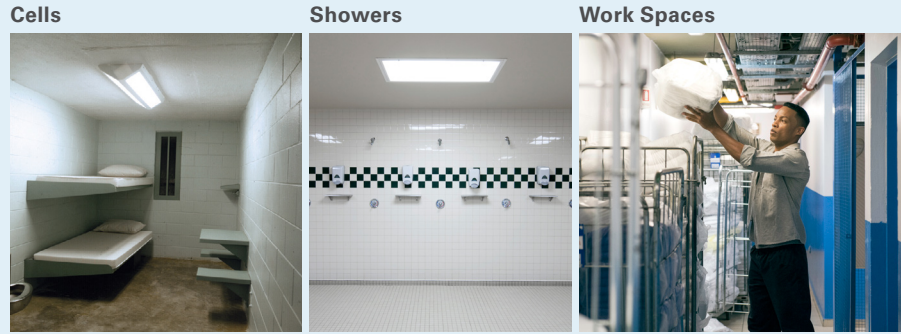
	ENV	FLD6BXV	FWL
Sizes	1' x 2', 1' x 4', 2' x 2', 2' x 4'	6" round	18", 24", 48"
Mounting	Recessed troffer	Recessed downlight	Wall mount
Max lumens	6,100	6,600	6,000
UL Location Rating	Wet	Wet	Damp
IP Rating	IP66	IP66	
Wipedown	Standard	Standard	Standard
Tamperproof	Standard	Standard	Standard
NSF	Standard		
CRI	80, 90	80, 90, 97	80, 90

Click on products to learn more



	SGI	ENW
Sizes	1' x 4', 2' x 2', 2' x 4'	1' x 2', 1' x 4', 2' x 2', 2' x 4'
Mounting	Recessed troffer	Recessed troffer
Max lumens	11,500	6,100
UL Location Rating	Damp (Wet optional)	Wet
IP Rating	IP65 (optional)	IP66
Wipedown	Standard	Standard
Tamperproof	Optional	Optional
NSF	Optional	Standard
CRI	80, 90	80, 90

Unsupervised Areas



- Inmates regularly present in these areas for long periods of time
- Guards only pass by periodically; not continuously present
- Fixtures typically mounted at lower heights and easy to reach
- Lens and metal thicknesses are thick to withstand regular, extended periods of potential high abuse

Supervised Areas



- Inmates occasionally present in these areas
- Guards regularly present, able to respond quickly to inmates attempting to damage fixtures
- Fixture mounting heights low, medium, or high depending on space/application
- Lens and metal thicknesses withstand intermittent, moderate abuse

Click on products to learn more



		FMB	FMR	FCC	FUSL
Applicability	Cells	★★★	★★★	★★★	★★★
	Showers		★★★	★★★	★★
	Work Spaces	★★	★★★	★★	★★★
Features	Mounting	Wall	Recessed	Corner	Surface
	Size	2', 4'	1x1, 1x2, 1x4, 2x2, 2x4	2', 4'	2', 4'
	Max Lumens	5,264 / 5,264*	9,960*	7,178*	11,832*
	Wet Location	N/A	Optional	Optional	Optional
	Max Metal Ga. / Thickness	12 ga / 0.109"	12 ga / 0.109"	12 ga / 0.109"	12 ga / 0.109"
	Max Total Lens Thickness	.750"	.875"	.875"	.687"

Notes: 1. ★★★ = high applicability, ★★ = medium applicability, ★ = low applicability, blank = non-applicable
 *Max Lumens with 0.250" Polycarbonate Lens
 **Nominal Lens Thickness

Click on products to learn more



		FCT	FMS	TR15
Applicability	Hallways	★★★	★★★	★★
	Cafeterias	★★	★★★	★★
	Visiting Spaces	★★★	★★★	★★★
Features	Mounting	Surface	Surface	Wall
	Size	2', 4'	1x1, 1x2, 1x4, 2x2, 2x4	15" Round
	Max Lumens*	16,700	15,300	4,875
	Wet Location	N/A	Optional	Standard
	Max Metal Ga. / Thickness	12 ga / 0.109"	12 ga / 0.109"	N/A
	Max Total Lens Thickness	.500"	.860"	0.135"

Notes: 1. ★★★ = high applicability, ★★ = medium applicability, ★ = low applicability, blank = non-applicable

Non-Correctional Areas

Offices



Entrances



Waiting Areas



- Inmates never/rarely present
- Guards rarely present
- Improved aesthetic appearance desired
- Lenses can be polycarbonate or acrylic



		GRV	FLD6B	ENV	G12
Applicability	Offices	★★★	★★★	★★★	★
	Entrances	★★★	★★★	★★★	★★★
	Waiting Areas	★★★	★★★	★★★	★
Features	Mounting	Recessed	Recessed	Recessed	Wall
	Size	1x4, 2x2, 2x4	6" Round	1x2, 1x4, 2x2, 2x4	12" Square
	Max Lumens	18,000	7,000	6,489*	3,750
	Wet Location	N/A	Standard	Standard	Standard
	Max Total Lens Thickness	0.187"	0.375"	0.250"	0.135***

Notes: 1. ★★★ = high applicability, ★★ = medium applicability, ★ = low applicability, blank = non-applicable

*Max Lumens with 0.250" Polycarbonate Lens

**Nominal Lens Thickness

Security Level	Super Max	Max	Medium	Minimum	High Abuse	Non-Correctional
Metal Material	Steel / Stainless	Steel / Stainless	Steel / Stainless	Steel / Stainless	Steel / Stainless / Aluminum	Steel / Aluminum
Door Gauge	12 ga	14 ga	16 ga	18 ga	20 ga	N/A
Housing Gauge	14 ga	14 ga	16 ga	16 ga	20 ga	N/A
Lens	0.375" Polycarbonate or Tempered Glass	0.250" Polycarbonate or Tempered Glass	0.187" Polycarbonate or Tempered Glass	0.156" Polycarbonate or Tempered Glass	0.125" Polycarbonate	0.125" DR Acrylic

Areas	Unsupervised Areas	Supervised Areas	Non-Correctional Areas
	Unsupervised Areas	Supervised Areas	Non-Correctional Areas

Control Systems

TCS Touch Control System

- High security capacitive touch bolt
- Remote override capacity
- Integral to fixture or remote in wall

SPS Security Push System

- Security push switch, integral to fixture
- Local single fixture/circuit control

Commercial Switch / Dimmer

- Non-tamper resistant
- Offers on/off and dimming

Control Systems	TCS Touch Control System	SPS Security Push System	Commercial Switch Dimmer
	TCS Touch Control System	SPS Security Push System	Commercial Switch Dimmer

Good

Better

Best

Click on products
to learn more



		FVS4	FVS8	HVSL2	HVSL4	HVSL8	HVSL12	HVL8	HVL12
APPLICABILITY¹	Behavioral Health	★	★	★★	★★	★★★	★★	★★	★★
	Outdoor Vandal Resistant	★★	★★	★★	★★	★★	★★	★★	★★
	Indoor Vandal Resistant	★★★	★★★	★★★	★★★	★★★	★★★	★★★	★★★
	Industrial High Abuse	★★★	★★★	★★★	★★★	★★★	★★★	★★★	★★★
	Multifamily homes	★★	★★	★★★	★★★	★★★	★★★	★★	★★
MOUNTING	Wall	✓	✓	✓	✓	✓	✓	✓	✓
	Ceiling	✓	✓	✓	✓	✓	✓	✓	✓
	Pendant			✓	✓			✓	✓
FEATURES	Lengths	2', 3', 4', 8'	2', 3', 4', 8'	2', 3', 4', 8'	1', 2', 3', 4', 8'	2', 4', 8'	2', 4', 8'	1', 2', 4', 8'	1', 2', 4', 8'
	Size (W x H)	4" x 3.75"	8" x 3.75"	2.5" x 2.75"	4" x 3.3"	8.5" x 3.6"	12.5" x 3.6"	8.6" x 3.6"	12.6" x 3.6"
	Maximum Lumen Output (4ft Length)	8664	13841	4083	7883	13444	12942	12690	12350
	Lens Thickness	0.125", 0.187"	0.125", 0.187"	0.085"	0.085"	0.135"	0.135"	0.135"	0.135"
	Emergency	Optional	Optional	Optional	Optional	Optional	Optional	Optional	Optional
	Occupancy	Optional	Optional	Optional	Optional	Optional	Optional	Optional	Optional
	Photocell	N/A	N/A	N/A	N/A	N/A	N/A	N/A	N/A
CERTIFICATIONS	IP	N/A	N/A	N/A	N/A	IP63	IP63	IP64	IP64
	Wet Location	Optional	Optional	Optional	Optional	Optional	Optional	Standard	Standard
	NSF	N/A	N/A	N/A	Optional	N/A	N/A	Optional	Optional

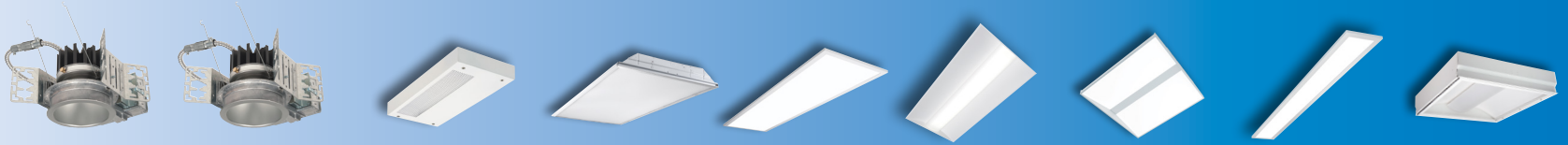
Notes: 1. ★★★ = high applicability, ★★ = medium applicability, ★ = low applicability, blank = non-applicable

Good

Better

Best

Click on products
to learn more



		FLD4B	FLD6B	UCLV	GRV	FSP	FCZ	ENV	FSN	SGL
APPLICABILITY ¹	Behavioral Health	★★★	★★★★	★★	★★	★★★★	★★★★	★★★★	★★★★	★★★★
	Indoor Vandal Resistant	★★★	★★★★	★★★★	★★★★	★★★★	★★★★	★★★★	★★★★	★★★★
	Indoor High Abuse	★★★	★★★★	★	★★★★	★★★★	★★★★	★	★★★★	★
	Multifamily homes	★★★	★★★★	★	★★	★★	★★	★★	★	★★
FEATURES	Size	4" Round	6" Round	1', 2', 3', 4'	1x4, 2x2, 2x4	1x4, 2x2, 2x4	1x4, 2x2, 2x4	1x2, 1x4, 2x2, 2x4	Fixed 2', 4', 8'	1x4, 2x2, 2x4
	Mounting	Recessed	Recessed	Undercabinet	Recessed	Recessed	Recessed	Recessed	Recessed or Surface/Suspension	Recessed
	Maximum Lumen Output	4,000	7,000	2,400	17,000	6,400	7,500	6,200	4,121 (4ft)	11,500
	Maximum Lens Thickness	0.187"	0.500"	0.187"	0.187"	0.375"	0.250"	0.375"	0.250"	0.375"
	Emergency	Optional	Optional	N/A	Optional	Optional	Optional	Optional	Optional	Optional
	Occupancy	N/A	N/A	Optional	N/A	N/A	N/A	N/A	N/A	N/A
CERTIFICATIONS	IP	IP66	IP66	IP63	N/A	IP65/IP66	IP65	IP66	IP66	IP65
	Wet Location	Standard	Standard	N/A	N/A	Standard	Standard	Standard	Standard	Optional
	NSF	Standard	Standard	N/A	N/A	Standard	Standard	Standard	Standard	Optional

Notes: 1. ★★★ = high applicability, ★★ = medium applicability, ★ = low applicability, blank = non-applicable

Vandal Resistant Wall Packs

LED

Fail-Safe

Whether lighting hallways, stairwells, prisons, or shopping plazas in a variety of high abuse applications, **Fail-Safe's** wall pack vandal resistant LED products offer a complete family of innovative, affordable, and energy saving LED solutions for your next project.



Good **Better** **Best**

Click on products to learn more

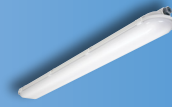
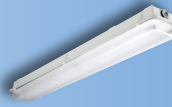
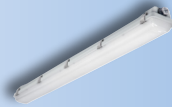
		B95	H12	G12	TR11	TR15	FW
APPLICABILITY¹	Behavioral Health	★★	★★	★★	★★★★		★★★★
	Outdoor Vandal Resistant	★★★	★★★	★★★	★★★★		★★★★
	Indoor Vandal Resistant	★★	★★	★★	★★★★		★★
	Industrial High Abuse	★★★	★★★	★★★	★★★★		★★★
	Multifamily homes	★★	★★	★★	★★★★		★★★
MOUNTING	Wall	✓	✓	✓	✓		✓
	Ceiling	✓	✓	✓	✓		N/A
FEATURES	Size	5" x 9" Rectangle	12" x 12" Square	12" x 12" Square	11" Round	15" Round	6" x 12", 12" x 6", 9" x 9", 12" x 12"
	Maximum Lumen Output	1,975	4,703	3,750	2,630	4,875	2,500
	Lens Thickness	0.130"	0.156"	0.130"	0.125"		0.125"
	Emergency	N/A	Optional	Optional	Optional		Optional
	Occupancy	N/A	Optional	Optional	Optional		Optional
	Photocell	Optional	Optional	Optional	Optional		N/A
CERTIFICATIONS	IP	IP65	IP65	IP65	IP65		IP65
	Wet Location	Standard	Standard	Standard	Standard		Standard

Notes: 1. ★★★ = high applicability, ★★ = medium applicability, ★ = low applicability, blank = non-applicable

Vandal Resistant Vaportite LED

Fail-Safe

Click on products
to learn more



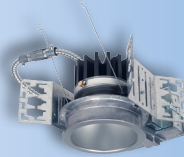
		VRVT1	VRVT2	VRVT3	VRVT4S	VRVT4
APPLICABILITY	Canopy	★★	★★	★★		
	Parking Garage	★★	★★	★★★		
	Warehouse	★★★	★★★	★★★	★	★
	Food Processing	★	★★	★★★	★★	★★
	Manufacturing	★★	★★	★★	★★★	★★★
	Complex Environments	★	★	★★★	★★★	★★★
	Natorium	★	★★	★★★	★★★	★★★
	Vivarium		★★★	★★★	★★★	★★★
FEATURES / PERFORMANCE	Lumen Range	3,500 - 12,000	2,000 - 22,000	2,000 - 8,000	9,000 - 18,000	9,000 - 30,000
	Efficacy (Max)	150 lm/W	150 lm/W	154 lm/W	165 lm/W	146 lm/W
	Distribution	General	General, Wide	General, Wide, Parking	General	General
	Lengths	4', 8'	2', 4', 8'	2', 4'	2'	4'
	Housing	Polycarbonate	Fiberglass housing is reinforced polyester and selfextinguishing (ASTM-D635-74) plastic	Fiberglass/Polyester	Polycarbonate	Polycarbonate
	Lens	Polycarbonate	Polycarbonate	Polycarbonate	DR Acrylic or Polycarbonate	DR Acrylic or Polycarbonate
	Wet Location	Yes	Yes	Yes	Yes	Yes
	IP Rating	IP65	IP65	IP65, 66, 67	IP65, 66, 67, 69	IP65, 67
	NSF	Yes	Yes	Yes	Yes	Yes
	NEMA 4X	None	None	Yes	Yes	Yes
	Life (@60K hrs)	L70 @60K	L91 @61K	L91 @61K	L70 @60K	L70 @60K
	Ambient Range	-20C to 45C	-40C to 35C	-40C to 50C	-40C to 40C	-40C to 40C
	Emergency	Yes	Yes	Yes	Yes	Yes
Tamper-resistant	Standard	Standard	Standard	Standard	Standard	
Narrow Spectrum Color LED	N/A	Red, Amber, Green	Red, Amber, Green	Red, Amber, Green	Red, Amber, Green	
INTEGRATED CONTROLS	Basic Occupancy	✓	✓	✓	✓	✓
	Stand Alone Daylight / Occupancy	✓	✓		✓	✓
	WaveLinX	✓				

Notes: 1. ★★★ = high applicability, ★★ = medium applicability, ★ = low applicability, blank = non-applicable

Fail-Safe offers an assortment of downlights intended for a variety of customer applications. Whether it's high abuse environments, medical spaces, or even MRI suites, **Fail-Safe's** downlight fixtures meet the most stringent requirements and still deliver the aesthetic appeal desired by customers.



Click on products to learn more



		FLD4B Open Medical 4"	FLD4BX Enclosed 4"	FLD6B Open Medical 6"	FLD6BX Enclosed 6"	FLD6BX / OR Operating Room	MRI-R6DNLT MRI Downlight
APPLICABILITY¹	Vandal Resistant / Behavioral Health	★	★★★	★	★★★		
	Correctional		★		★★		
	Food Processing	★★★	★★★	★★★	★★★	★	
	Cleanroom			★★★	★★★	★★	
	Medical (non-OR)	★★★	★★★	★★★	★★★	★	
	Operating Room	★	★★	★	★★	★★★	
MRI						★★★	
CONFIGURATIONS	Open	✓	✓	✓	✓		✓
	Bottom Lens		✓		✓		
	Bottom Trim Ring				✓	✓	
FEATURES	Size	4"	4"	6"	6"	6"	6"
	Max Lumens	5,000	5,000	7,000	7,000	5,000	1,800
	Tamperproof	–	Optional	–	Optional	–	–
	VividTune	Available	Available	Available	Available	–	–
	Dim to Warm	Available	Available	Available	Available	Available	–
	Non-Ferrous	–	–	–	–	–	Standard
Remote Driver	–	–	–	–	–	Standard	
CERTIFICATIONS	UL	Wet	Wet	Wet	Wet	Wet	Damp
	IP	IP65	IP65/IP66	IP65	IP65/IP66	IP66	–
	NSF	Available	Available	Available	Available	Available	–
	MIL-STD-461-G	–	–	–	–	Available	–
	ISO Cleanroom²	5	5	5	5	5	–

Notes: 1. ★★★ = high applicability, ★★ = medium applicability, ★ = low applicability, blank = non-applicable. 2. Fixtures rated ISO 5 are compatible with cleanrooms rated ISO 5 or higher.

Good

Better

Best

Click on products
to learn more



		GRW	GRV	FSP	FCB	FCZ	ENW/ENC	ENV	CLM	CLP	FSN	SGI
APPLICABILITY ¹	Vandal Resistant	★	★★★★	★★	★★	★★★★	★	★★★★	★	★	★★★★	★★★★
	High Abuse	★	★★★★	★★★★	★★	★★★★	★★	★★★★	★★	★	★★★★	★★★★
	Healthcare	★	★	★★★★	★★★★	★★★★	★★★★	★★	★	★	★★★★	★★★★
	Behavioral Health	★	★★★★	★★	★★	★★★★	★	★★★★	★	★	★★★★	★★★★
	Cleanroom	★		★★★★		★★	★★★★	★★	★★★★	★★★★	★★	★
	Pharmaceuticals	★★		★★★★	★	★★	★★★★	★★	★★★★	★★★★	★★	★★
	Vivariums					★			★★★★	★★★★		★★
	Hosedown	★★		★★★★	★	★★	★★★★	★★★★	★★★★	★★★★	★★★★	★★★★
	Food Prep			★★★★		★★★★	★★★★	★★	★★★★	★★★★	★★★★	★★★★
FEATURES	Size	1' x 4', 2' x 2', 2' x 4'	1' x 4', 2' x 2', 2' x 4'	1' x 4', 2' x 2', 2' x 4'	1' x 4', 2' x 2', 2' x 4'	1' x 4', 2' x 2', 2' x 4'	1' x 4', 2' x 2', 2' x 4'	1' x 4', 2' x 2', 2' x 4'	1' x 4', 2' x 2', 2' x 4'	1' x 4', 2' x 2', 2' x 4'	Fixed 2', 4', 8'	1' x 4', 2' x 2', 2' x 4'
	Mounting	Grid	Grid	Grid	Grid	Grid	Grid	Grid	Grid	Grid/Flange/Surface	Surface	Grid
	Max Lumens	18,000	18,000	6,400	7,500	7,500	7,000	7,000	24,000	24,000	4,121 (4ft)	11,500
	Sevice from Below	✓	✓		✓				✓	✓		✓
RATINGS	Wet Location	Standard	Standard	Standard	Optional	Standard	Optional (ENW) Standard (ENC)	Standard	Standard	Standard	Standard	Standard
	IP	-	-	IP66 Optional	-	IP65 Optional	IP66	IP66	IP65	IP66	IP66	IP65 Available
	NSF	-	-	Standard	-	Standard	Standard	Standard	Standard	Standard	Standard	Available
	ISO Cleanroom ²	-	-	5	-	5	5	5	5	5	5	-

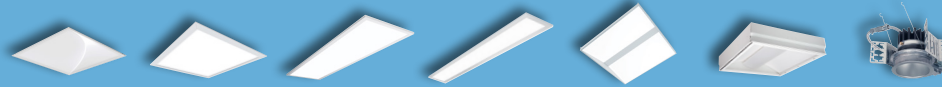
Notes: 1. ★★★★★ = high applicability, ★★★★ = medium applicability, ★ = low applicability, blank = non-applicable
 2. Fixtures rated ISO 5 are compatible with cleanrooms rated ISO 5 or higher.

Multi-Function
(Exam / Ambient / Reading / Night Light)

Clear Polycarbonate Bottom Lens

Surface Mount Wall / Ceiling

Click on products to learn more



	ArcMed Patient Room Recessed	ArcMed Patient Room Narrow	Medical Ambient / Exam	ArcMed InDepth	FailSafe ArcMed Recessed	FailSafe Sealed Panel	FailSafe Sealed Narrow	Encounter Vandal	Sealed & Gasketed Indirect	FailSafe Downlight	Harmony Vandal Steel	FailSafe Wall LED	Multi-Purpose Wall
	APR	APN	MAE (w/door)	AID	FLR/FLR2	FSP	FSN	ENV	SGI	FLD4 & FLD6	HVSL8B	FWL	MWL
Polycarbonate Lens/ Thickness	0.250" max	0.250" max	0.100" max	0.250" max	0.375" max	0.375" max	0.250" max	0.250" max	0.375" max	0.375" max	0.135" max	0.250" max	0.125" max
Mounting	Recessed Grid, Drywall Framing Kit for hard ceiling	Recessed Grid, Drywall Framing Kit for hard ceiling	Recessed Grid, Drywall Framing Kit for hard ceiling	Recessed Grid, Drywall Framing Kit for hard ceiling	Recessed Grid, Drywall Framing Kit for hard ceiling	Recessed Grid, Drywall Framing Kit for hard ceiling	Recessed Grid, Drywall Framing Kit for hard ceiling	Recessed Grid, Drywall Framing Kit for hard ceiling	Recessed Grid, Drywall Framing Kit for hard ceiling	Recessed Ceiling	Surface, Wall or Ceiling	Surface, Wall or Ceiling	Surface, Wall
Sizes / Lumen Ranges	2x2 up to 8,940 2x4 up to 21,000	Pair of 6" x 4' up to 8,400	2x2 up to 7,600 2x4 up to 15,000	2x2 up to 8,000 2x4 up to 9,000 1x4 up to 8,000	2x2 up to 6000 2x4 up to 10000 1x4 up to 8000	2x2 up to 4200 2x4 up to 6400 1x4 up to 4200	4' length up to 4,050 8' length up to 8,250 2' length up to 2,000	2x2 up to 4,300 2x4 up to 7,000 1x4 up to 4,300 1x2 up to 3,500	2x2 up to 5,500 2x4 up to 11,500 1x4 up to 6,600	6" downlight to 7,000 4" downlight to 4,000	4' length up to 14,300 2' length up to 7,150	4' length up to 6,000 2' length up to 3,000 18" length up to 1,675	4' length up to 6,600 up / 7,300 down
VividTune	Yes	Yes	-	Yes	-	-	-	-	-	-	-	-	Yes
Listing	Damp standard / Wet location in process	Damp standard / Wet location available	Damp Location standard	Damp standard / Wet available	Wet Location, High Abuse, Medical/ Cleanroom	Wet Location standard	Wet Location standard	Wet Location standard	Damp standard / Wet available	Wet Location standard	Damp Location standard	Damp Location standard	Damp Location standard
IP	Testing in process	IP65	-	IP65 available	IP65 & IP66 available	IP65 & IP66 available	IP66 available	IP66	IP65 available	IP65	IP63	-	IP4X
NSF	-	Yes	-	Yes	-	Yes	Yes	Yes	-	Yes	-	-	-
ISO	-	-	-	ISO5-8	ISO3-8	-	ISO5-9	ISO5-9	-	-	-	-	-
IK	-	Testing in process	IK10 rating	IK10 with 0.25" Polycarbonate Lens	IK10 rating	IK10 with 0.25" Polycarbonate Lens	-	-	-	-	-	-	-
Ligature Resistant	Yes	Yes	Yes	Yes	Yes	Yes	Yes	Yes	Yes	Yes	Yes	Yes	Yes
Anti-microbial Finish	-	Standard Anti-microbial	Available	Standard Matte White	-	Standard Matte White	Standard Matte White	Standard Matte White	Available	Available	Available	Available	Available
Other	Used directly over the bed	Patient Control w/ Low Voltage Relay. Used in pairs, adjacent to the bed.	Extruded Aluminum or Steel Door	Multiple Regress Diffusers	Aluminum frame weld and ground	50°C Ambient Rating	Flex Assembly for Continuous Run	Continue Encounter theme into complex areas	Extruded Aluminum or Steel Door	Open or Enclosed, Polycarbonate Lens to 0.375" thick	Corner Mount Bracket, Corner Connectors available	Flush Tamper Proof Screws standard, separate Up/Down Chambers	0.125" Polycarbonate Lens, Uplight/Downlight, for protection

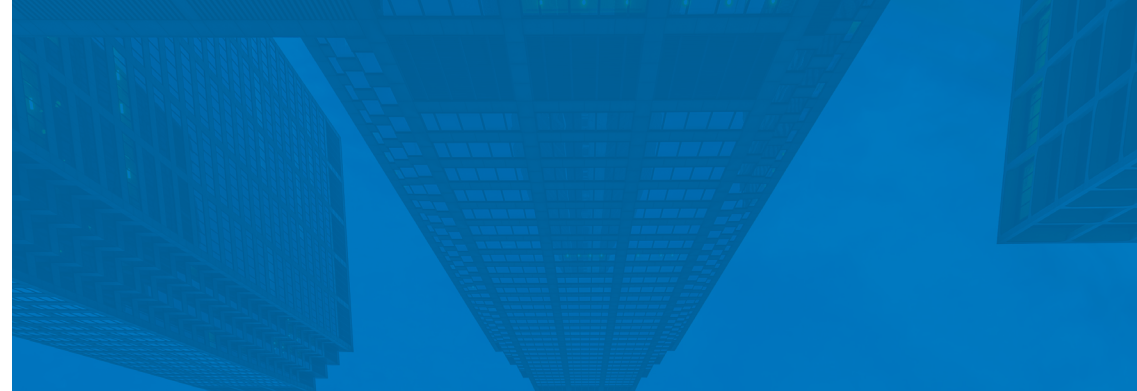
Sure-Lites

Sure-Lites has been the trusted name and industry leader for emergency and exit lighting for over 30 years. Sure-Lites offers a full line of innovative emergency and exit lighting products designed for commercial, industrial, hospitality, healthcare, educational and multi-housing residential spaces.

Sure-Lites products are designed to meet and exceed today's building codes. Our products offer maximum reliability and performance while minimizing installation and maintenance costs. From ease of installation to performance-enhancing electronics to time-saving features, Sure-Lites is focused on advancing technology to develop the most effective emergency and exit lighting solutions.

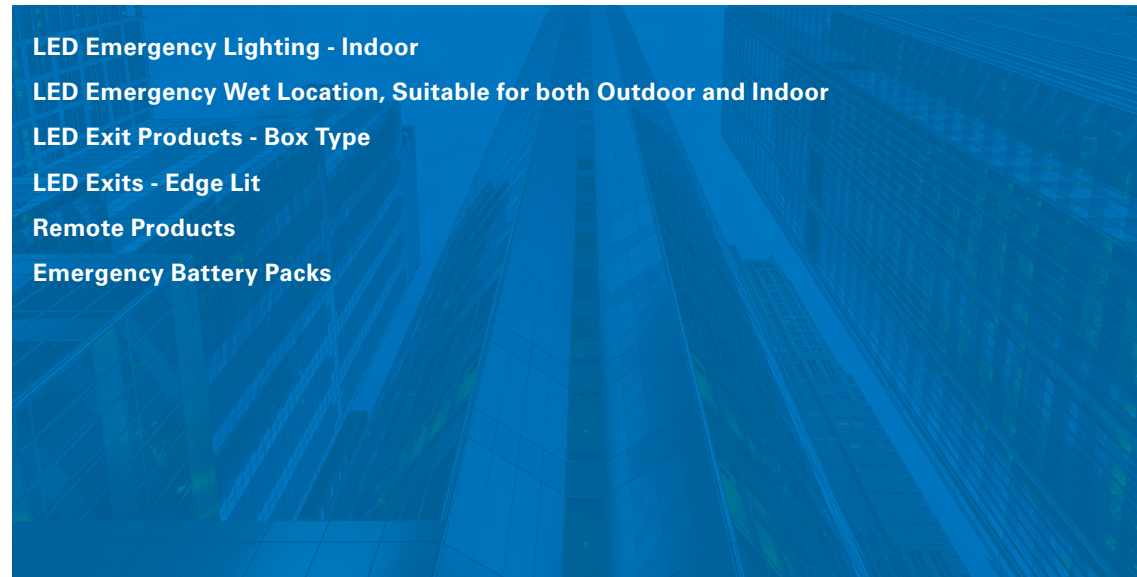


T20 Certified to California
Title 20 Appliance Database



The product selection guides are simple yet powerful tools to help assist with product comparisons and selection based on features, performance and value.

- 27 LED Emergency Lighting - Indoor**
- 28 LED Emergency Wet Location, Suitable for both Outdoor and Indoor**
- 29 LED Exit Products - Box Type**
- 30 LED Exits - Edge Lit**
- 31 Remote Products**
- 32 Emergency Battery Packs**



Good

Better

Best

Click on products to learn more



	APELMINI	APEL	AP2SQLED30	SEL	XR6C-LED	SELM	SELHP100R3	SELMREC	SELRA50	SELA	SELMTG
Material	Polycarbonate	Polycarbonate	Thermoplastic	Polycarbonate	Sheet Metal	Sheet Metal	Thermoplastic	Sheet Metal	Thermoplastic	Polycarbonate	Sheet metal
Color	White	White or Black	White	White or Black	White	White	White	White or Black	White	White or Black	White or Black
Mounting	Surface	Surface	Surface	Surface	Surface	Surface	Surface	Recessed wall or ceiling	Recessed ceiling	Recessed wall mount	Recessed T-grid mount
Coverage	17 feet	17 feet	30 feet	17/25/50/60 feet	2 x 300 lumen heads	25/50/60/80 feet	100 feet	25 or 60 feet	50 feet	29 feet	60 feet
Battery	Nickel cadmium	Nickel cadmium	Nickel cadmium	Nickel cadmium	Nickel cadmium	Nickel cadmium	LiFePO4	Nickel cadmium	Nickel cadmium	Nickel cadmium	Nickel cadmium
Remote Capability	No	✓ (Option)	No	✓ (Option) 4 to 16 watts	No	4 to 16 watts	3 watts	4 to 10 watts	NiMH	No	5 watts
Temp Range	10° C to 40° C	10° C to 40° C	10° C to 40° C	0° C to 40° C	0° C to 40° C	0° C to 40° C	0° C to 50° C	0° C to 40° C	10° C to 40° C	0° C to 40° C	0° C to 40° C
Self-Diagnostics	No	No	No	✓ (Option)	No	✓ (Standard)	✓ (Option)	✓ (Standard)	✓ (Option)	✓ (Standard)	✓ (Standard)
EZ Key Battery Disconnect	No	No	No	✓ (with SD Models)	✓ (Standard)	✓ (Standard)	No	No	No	✓ (Standard)	✓ (Standard)
Laser Test	No	No	No	✓ (with SD Models)	No	✓ (Standard)	No	✓ (Standard)	No	✓ (Standard)	✓ (Standard)
UL Rating	UL 924 Damp	UL 924 Damp	UL 924 Damp	UL 924 Damp	UL 924 Damp	UL 924 Damp	UL 924 Damp	UL 924 Damp	UL 924 Damp	UL 924 Damp	UL 924 Damp
Normally On	No	No	No	No	No	No	No	No	No	No	No
City of Chicago Compliant	No	No	No	No	✓ (Standard)	✓ (Standard)	No	✓ (Standard)	No	No	✓ (Standard)
Availability	Stock	Stock	Stock	Stock	Stock	Stock	Stock	Stock	Stock	Stock	Stock
Other							<ul style="list-style-type: none"> • Ideal for ceiling or wall mount • 3 Watt remote capacity allows up to 130 feet egress coverage 	<ul style="list-style-type: none"> • Architectural Fixture • Round and rectangular trims provided for design flexibility 	<ul style="list-style-type: none"> • Architectural Fixture • Three shrouds available, "barrel" accepts wall treatment for fixture to blend into space 	<ul style="list-style-type: none"> • Architectural, recessed T-grid mount 	

LED Emergency Lighting - Wet Location, Suitable for both Outdoor and Indoor

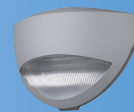
Sure-Lites

Good

Better

Best

Click on products to learn more



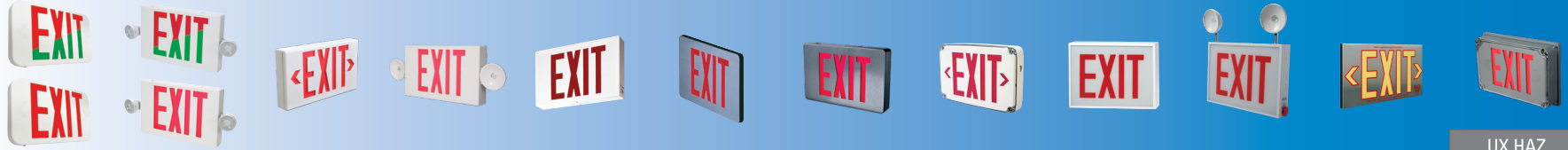
	SELW	SELDWA	SELDWA50PS	AEL2	SELIN60SD	SELD
Material	Polycarbonate	Die cast AL	Die cast AL	Die Cast AL	Fiberglass	Die Cast AL
Color	Ag/BK/WH/BZ	Ag/BK/WH/BZ	Ag/BK/WH/BZ	Ag/BK/WH/BZ	Grey	Ag/BK/WH
Mounting	Surface	Surface, Mullion Mount option	Surface	Surface	Surface	Surface
Coverage	25 feet	29 or 50 feet	29 or 50 feet	25 feet	25/50/60 feet	60 feet
Battery	Nickel cadmium	Nickel cadmium	Nickel cadmium	Nickel cadmium	Nickel cadmium	Nickel cadmium
Remote Capability	No	No	No	No	4 to 10 watts	No
Temp Range	0° C to 40° C / -20° C to 55° C	0° C to 40° C / -20° C to 55° C	0° C to 40° C / -30° C to 40° C	-30° C to 55° C	0° C to 40° C	-30° C to 50° C
Self-Diagnostics	No	✓ (Standard)	✓ (Standard)	✓ (Standard)	✓ (Standard)	✓ (Standard)
EZ Key Battery Disconnect	No	No	No	No	No	No
Laser Test	No	No	No	No	✓ (Standard)	✓ (Standard)
UL Rating	UL 924 Wet	UL 924 Wet	UL 924 Wet	UL 924 Wet	UL 924 Wet, NEMA 4X	UL 924 Wet, NEMA 4X, HAZ option
Normally On	No	No	✓ (Standard)	✓ (Standard)	No	No
City of Chicago Compliant	No	✓ (Standard)	✓ (Standard)	✓ (Standard)	No	✓ (Standard)
Availability	Stock	Stock	Stock	Stock	Stock	Stock
Other			<ul style="list-style-type: none"> Architectural Look A/C on functionality: Dusk-to-dawn, switched on, always on, always off 	<ul style="list-style-type: none"> Architectural Look A/C on functionality: Switched on, always on, always off 		

Good

Better

Best

Click on products to learn more



	APX	APC	LPX	LPXC	SLX	TPX	CX	LPXW	CHX	CHXC	PHL	UX HAZ
	APX	APC	LPX	LPXC	SLX	TPX	CX	LPXW	CHX	CHXC	PHL	UX NEMA 4X
Type	Box	Combo	Box	Combo	Box	Thin Profile/Box	Box	Box	Box	Combo	Thin Profile/Box	Box
Material	Thermoplastic	Thermoplastic	Polycarbonate	Polycarbonate	Steel	Die Cast AL	Die Cast	Polycarbonate	Steel	Steel	Aluminum	Die Cast AL
Mounting	Surface	Surface	Surface	Surface	Surface	Surface	Surface	Surface	Surface	Surface	Surface	Surface
Faces	Field Selectable	Field Selectable	Field Selectable	Field Selectable	Field Selectable	One or Two	Field Selectable	One or Two	One or Two	One or Two	One or Two	One or Two
Letter Color	Red or Green or 	Red or Green or 				Red or Green		Red or Green	Red	Red	Outline: Red or Green	
Housing Color	WH, BK	WH, BK	WH, BK	WH, BK	White	AL, WH, BK	AL, WH, BK	AL, WH, BK	White	White	Aluminum	AL, WH, BK
Fire Alarm Interface	No	No	No	No	No	No	✓ (Option)	No	No	No	No	No
2nd Circuit (A/C Only)	✓ (2C/2 Hot Option)	No	✓ (Option)	No	✓ (Option)	No	✓ (Option)	No	No	No	No	✓ (Option)
Battery (In Self-Powered Models)	Nickel Cadmium	Nickel Cadmium	Nickel Cadmium	Nickel Cadmium	Nickel Cadmium	Nickel Cadmium	Nickel Cadmium	Nickel Cadmium	Nickel Cadmium	Nickel Cadmium	No	Nickel Cadmium
Self-Diagnostics	No	No	✓ (Option)	✓ (Option)	✓ (Standard)	No	✓ (Option)	✓ (Standard)	No	No	No	✓ (Standard)
Laser Test Capability	No	No	✓ (SD Models)	✓ (SD, Remote Models)	No	No	✓ (SD Models)	No	No	No	No	✓ (Standard)
EZ Key Battery Disconnect	No	No	✓ (SD Models)	SD Models	✓ (Standard)	No	✓ (SD Models)	No	✓ (Standard)	✓ (Standard)	No	No
Remote Capability	✓ (Option)	✓ (Option)	✓ (Option)	✓ (Option)	No	No	No	No	No	No	No	No
UL Rating	UL 924 Damp	UL 924 Damp	UL 924 Damp	UL 924 Damp	UL 924 Damp	UL 924 Damp	UL 924 Damp	UL 924 Wet	UL 924 Damp	UL 924 Listed	UL 924 Listed	UL 924 Wet, NEMA4X/HAZ
City of Chicago Compliant	No	No	No	No	No	No	No	No	Yes	✓ (Standard)	No	No
Availability	Stock	Stock	Stock	Stock	Stock	Stock	Stock	Stock	Stock	Stock	Stock	Stock
Other	Contact factory for "2nd Circuit/2 Hot" models SALIDA face version available	17 feet of egress coverage SALIDA face version available		25 or 50 feet of egress coverage	Signage options available	Suitable for floor proximity	Signage options available	Standard		• 2 x 300 lumen heads/60 feet egress coverage • "Stair" signage available	Photoluminescent "Glow-in-the-Dark" yields 90 minutes of illumination	

Good

Better

Best



Click on products to learn more

	APXEL	ECHX	SCX	EU	EUX	ARCEL	ES	ELX
Housing Material	Polycarbonate	Aluminum	Aluminum	Aluminum	Aluminum	Aluminum	Aluminum	Aluminum
Mounting	Surface	Universal	Universal	Surface / Recessed	Universal	Surface / Recessed	Surface / Recessed	Recessed
Pendant / Mullion Mount	No	No	No	✓ (Pendant)	✓ (Pendant, Mullion)	✓ (Pendant, Mullion)	✓ (Pendant, Mullion)	No
Faces	One or Two	One or Two	Universal	Universal	Universal	One or Two	One or Two	One or Two
Letter Color	Red or Green	Red Only	Red or Green	Red or Green	Red or Green	Red or Green	Red or Green	Red or Green
Lens Panel Color	White	White	1 Face Clear 2 Faces Mirror	1 Face Clear 2 Faces Mirror	Field Configurable: Clear, White, Mirror	Clear, White or Mirror	Clear, White or Mirror	Clear, White or Mirror
Chevron / Arrows	Field Selectable	Factory Install	Field Selectable	Field Selectable	Field Selectable	Field Selectable	Factory Install	Factory Install
Housing Color	White	AL, WH	AL	AL	AL, WH, BK	AL, WH, BK*	AL, WH, BK, BZ, PA	AL, WH, BK
Custom Color Available	No	No	No	No	No	No	Contact Factory	No
Fire Alarm Interface	No	No	No	No	No	✓ (Standard)	No	No
2nd Circuit (A/C Only)	No	No	No	✓ (2C/2 Hot Option)	✓ (Option)	No	No	✓ (Option)
Battery	Nickel Cadmium	Nickel Cadmium	Nickel Cadmium	Nickel Cadmium	Nickel Cadmium	Nickel Cadmium	Nickel Cadmium	Nickel Cadmium
Self-Diagnostics	No	No	No	No	✓ (Option)	✓ (Standard)	No	No
EZ Key Battery Disconnect	No	No	No	No	✓ (Standard)	✓ (Standard)	No	No
Laser Test Capability	No	No	No	No	No	✓ (Standard)	No	No
UL Rating	UL924 Damp	UL924 Damp	UL924 Damp	UL924 Damp	UL924 Damp	UL924 Damp	UL924	UL924
City of Chicago Compliant	No	✓ (Standard)	No	No	No	No	No	No
Availability	Stock	Stock	Stock	Stock	Stock	Stock/*MTO Black	MTO	MTO
Benefits	<ul style="list-style-type: none"> Value edge lit exit In Stock Self-adhesive field selectable chevrons = no ordering mistakes 	<ul style="list-style-type: none"> City of Chicago Compliant Easy Ordering Process In Stock 	<ul style="list-style-type: none"> Value edge lit exit Universal surface mounting and recessed mounting in one box Universal Faces In Stock Self-adhesive field selectable chevrons = no ordering mistakes 	<ul style="list-style-type: none"> Better Aesthetics Universal Faces Self-adhesive field selectable chevrons = no ordering mistakes Contact factory for "2nd Circuit / 2 Hot" models 	<ul style="list-style-type: none"> Better Aesthetics Universal Faces Self-adhesive field selectable chevrons = no ordering mistakes Labor savings self-diagnostics option 	<ul style="list-style-type: none"> Best Aesthetics Slim profile, no visible screws Multiple mounting options + square or round canopy for custom look Self-adhesive field selectable chevrons = no ordering mistakes Labor savings self-diagnostics standard Stocked product = faster time to site 	<ul style="list-style-type: none"> Best Aesthetics Multiple mounting options Factory install chevrons for custom look MTO BAA Compliant 	<ul style="list-style-type: none"> Best Aesthetics Recessed ceiling, wall, end mount Recessed mounting box for rough-in / new construction Factory install chevrons for custom look MTO

Good

Better

Best



Click on products to learn more

	APWR	SRP	SRM	SRPA
Material	Plastic	Polycarbonate	Sheet Metal	Polycarbonate
Source	LED	LED	LED	LED
Number of heads	1 or 2	1 or 2	1 or 2	2
Adjustable	✓ (Standard)	✓ (Standard)	✓ (Standard)	✓ (with forward throw)
Coverage	15 feet	13 to 60 feet	13 to 60 feet	29 feet
Voltage input	3.6 volts	4.8 through 12 volts	4.8 through 12 volts	4.8 through 6 volt
Color	White, Black	White, Black, Grey	White, Black, Grey	White, Black, Silver, Grey
Temp Range	0° C to 40° C	-30° C to 60° C	-30° C to 60° C	-30° C to 55° C
UL Rating	Wet location	Wet Location	Wet Location	Wet Location
Availability	Stock	Stock	Stock	Stock
Compatibility	Compatible with: All-Pro remote capable exits, combo & emergency lights	Compatible with: Sure-lites remote capable exits, combo and emergency lights	Compatible with: Sure-lites remote capable exits, combo and emergency lights	Compatible with: Sure-lites remote capable exits, combo and emergency lights

Wattage Output

Click on products to learn more



	EBPLEDL7W	EBPLED-7.5WSD	EBPLEDLP-10WSD	EBPLEDL14W	EBPLEDC1LV-20W	EBPLEDC1HV-20W
Fixture Compatibility	LED	LED	LED	LED	LED	LED
Input Voltage	120/277 VAC	120/277 VAC	120/277 VAC	120/277 VAC	120/277 VAC	120/277 VAC
Power Output	7W	7.5W	10W	14W	20W	20W
Output Voltage	8VDC to 55VDC	15VDC to 50VDC	8VDC to 52VDC	16VDC to 55VDC	20VDC to 50VDC	125VDC to 200VDC
Battery	LiFePO ₄	NiCad	NiCad	LiFePO ₄	NiCad	NiCad
Self-Diagnostics	No	✓ (Standard)	✓ (Standard)	No	No	No
Battery Disconnect	✓ (Standard)	No	No	✓ (Standard)	No	No
Temp Range	0°C to 55°C	0°C to 55°C	0°C to 55°C	0°C to 55°C	0°C to 55°C	0°C to 55°C
UL Rating	Field ¹	Factory or Field Install	Factory or Field Install	Field ¹	Factory or Field Install	Factory or Field Install
Availability	Stock	Stock	Stock	Stock	Stock	Stock

Notes: 1. Model EL7W and EL14W for factory install.

Lighting controls

Make your workspace work for you. Cooper Lighting Solution's connected lighting systems take the guesswork out of managing your facility, seamlessly adapting to patterns and preferences. With solutions that let you easily manage comfort, productivity and energy savings, it pays to be connected.

Lighting the spaces where we congregate - whether for work, for entertainment, education or services - is fundamental to our experience and performance. Maximizing those interactions requires specific design, cost and efficiency considerations.

34, 35



The product selection guides are simple yet powerful tools to help assist with product comparisons and selection based on features, performance and value.



Click on Connected product to learn more		WaveLinx Wireless	WaveLinx Wired
EQUIPMENT	Wired Switches	●	●
	Battery Switches	●	
	Wired Sensors	●	●
	Battery Sensors	●	
	Wireless fixtures	●	
	Sensor integrated fixtures	●	
	Switchpacks	●	●
	Receptacle Control	●	●
INSTALLATION	Integration	●	●
	Traditional wiring	●	●
	Modular Wiring System	●	●
	Wireless communications	●	
SOFTWARE	Two wire communications	●	●
	AV integration	●	●
	BACnet	●	●
	OpenADR	●	●
	Mobile App	●	●
	Floorplan	●	
	Alarms & Events	●	
	Energy Dashboard	●	
APPLICATIONS	API Integration	●	
	Office/ Private/ Open	●	●
	Education/ Classroom	●	●
	Industrial/ Warehouse	●	●
	Outdoor Parking Lot	●	●
	Outdoor Area Site	●	●
CODE	Outdoor Parking Garage		●
	ASHRAE 90.1 2016	●	●
	IECC 2018	●	●
	T24 2018	●	●

Why use Controls?



Rising conduit and wire costs

Conduit and copper has seen continued cost increase, as much as 22% over the past 12 months.

- Eliminate up to 60% of the wire runs
- Less wire - Less pipe



Shortage of qualified labor

80% of electrical contracting firms are reporting difficulty filling hourly craft worker positions and higher salaries.

- Save up to 45 minutes per control zone
- Less time - Less people



Installation times

Get off the job at least 40% faster simple install and simple setup.

- More jobs with the same people means more money for you
- Faster install



Energy savings

How do you make sure you meet local code and provide energy savings to your customer?

- Network Lighting Controls (NLCs) provide 47-70% savings with integrated luminaire lighting controls
- Up to 70% energy savings



Training

How do you keep up with the latest technology? Cooper Lighting Solutions provides local and classroom certification programs

- Learn how the system works in as little as 2 hours
- Simply mobile



Instructional videos

What if I need a tutorial on site? WaveLinx has fifteen, 5 minute videos that walk you through it.

- Free mobile app
- Free training videos



Utility incentives

Many states provide rebate incentives for LED fixtures with integrated sensors.

- Less material to install, and the rebate pays for it
- Incentives up to \$75 per fixture



Cybersecurity

Are you concerned with cybersecurity? Good, but know that WaveLinx has the UL2900-1 listing for Network Cybersecurity.

- Help customers stay secure
- Peace of mind that the product is backed by UL for cybersecurity

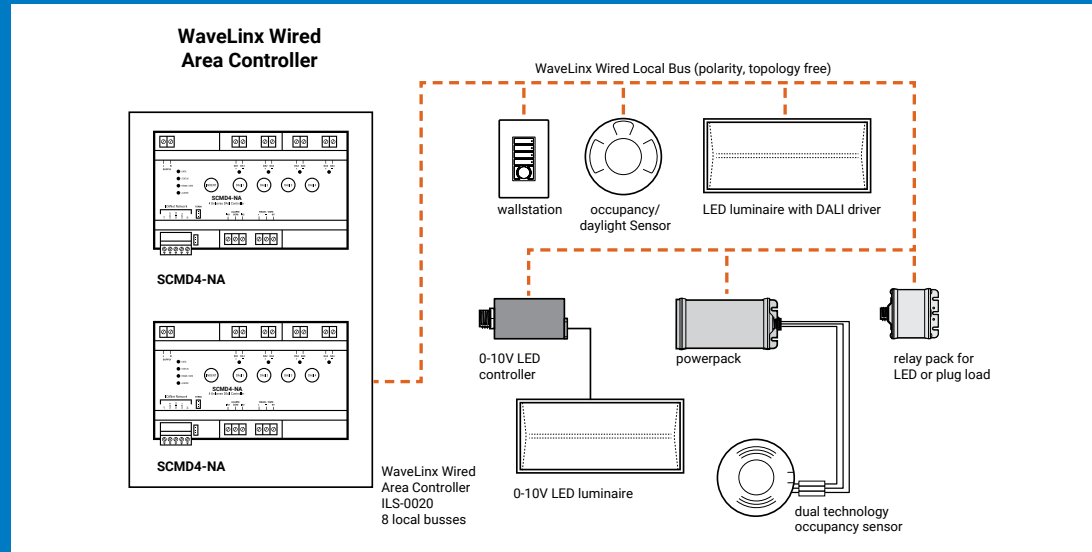
Wired or Wireless, code-compliant and cost-effective for today's **Electrician**



Wired

Your wired solution to control complete building lighting via area (relay), zone (0-10v) or fixture (2-wire or DMX) all from one system.

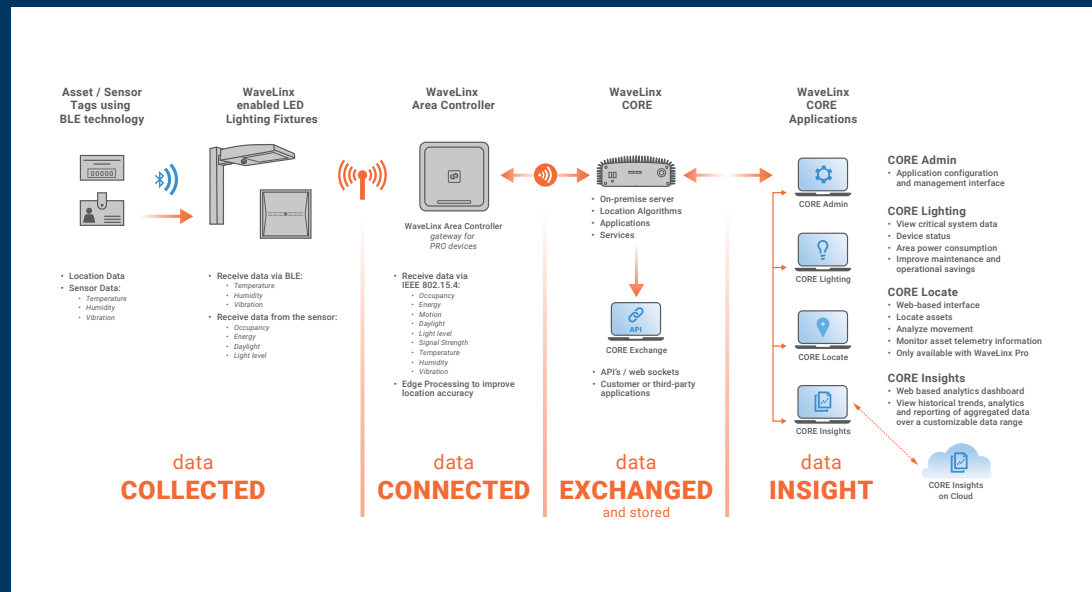
- Simplified control wiring
- Achieve more wired applications
- Control a floor or entire building



Wireless

Electrical Contractors use basic wiring practices they already know to complete projects and get off the job faster with the most comprehensive and cost effective system on the market.

- No special wiring required
- Get more jobs done faster
- Feel safe with industry best UL2900 listing
- Control a room, floor or entire building



Lighting Brands

Ametrix
AtLite
Corelite
Ephesus
Fail-Safe
HALO
HALO Commercial
Invue
iO
Iris
Lumark
LumarkAP
Lumière
McGraw-Edison
Metalux
MWS
NeoRay
Portfolio
PrentaLux - 3D Printed Lighting
RSA
Shaper
Streetworks
Sure-Lites

Controls Brands

Greengate
Fifth Light
Intelligent Lighting Controls

Connected Lighting Systems and Smart Spaces Platform

WaveLinx
Trellix Infrastructure



Cooper Lighting Solutions
1121 Highway 74 South
Peachtree City, GA 30269
P: 770-486-4800
www.cooperlighting.com

Canada Sales
5925 McLaughlin Road
Mississauga, Ontario L5R 1B8
P: 905-501-3000
F: 905-501-3172

© 2024 Cooper Lighting Solutions
All Rights Reserved
Printed in USA
Publication No. BR519040EN-web
December 11, 2024 12:48 PM

Cooper Lighting Solutions is a registered trademark.

All other trademarks are property of their respective owners.

Product availability, specifications, and compliances are subject to change without notice.