

Project		Catalog #		Type	
Prepared by		Notes		Date	



## Fail-Safe



### MPR3 | Multi-Function Patient Room

Ambient, Exam, Reading, Nightlight  
2' x 4' Recessed Ceiling  
Over the Bed

#### Typical Applications

Healthcare • Patient Rooms • Exam Rooms • Recovery Areas

#### Interactive Menu

- Order Information [page 2](#)
- Product Specifications [page 2](#)
- Product Warranty

#### Product Certification



#### Product Feature

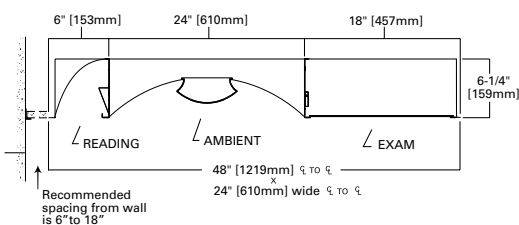


### Top Product Features

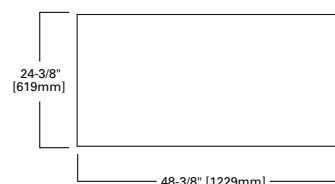
- Perform up to 4 functions in one luminaire to eliminate dedicated luminaires, and free up valuable ceiling space
- Exam, ambient and reading functions - each on a separate current, for individual control
- Night light available, amber or white 3500K - for safety and control
- 2 or 3 load low voltage relay for patient control
- Pattern 12 or smooth opal acrylic exam lens choices
- Options to meet Buy American and other domestic preference requirements

### Dimensional and Mounting Details

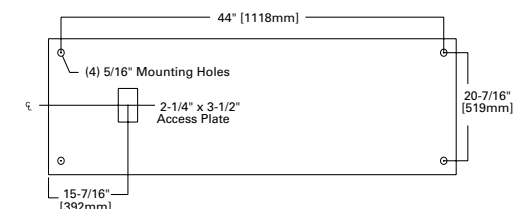
#### 3 COMPARTMENT DIMENSIONS



#### CEILING CUT-OUT DIMENSIONS (USING DFCL24W-U)



#### 3 COMPARTMENT MOUNTING



### Nominal Input Watts

	LO	STD	HI
Ambient (1 module)	13w/1200 lumens	19w/1800 lumens	24w/2200 lumens
Ambient (2 module)	26w/2375 lumens	36w/3550 lumens	48w/4000 lumens
Exam	52w/3900 lumens	76w/5700 lumens	96w/7200 lumens
Reading	13w/910 lumens	19w/1330 lumens	24w/1680 lumens

Nominal input watts approximated, taking into account driver efficiency, LED wattage, other variables.

## Order Information

SAMPLE ORDER NUMBER: MPR3-G-LD4-UNV-2STD/HI/LO-35-EDD3-FA-OPL-LLNL

MPR3-G-LD4-UNV-2STD/STD/LO-40-EDD3-FA-LVC3/AD/RD/E

Domestic Preferences	Product Family	Ceiling Type	LED	Voltage	# of LEDs (Ambient)	Ambient Light Level	Exam Light Level	Reading Light Level
Domestic Preferences <sup>(1)</sup>	Product Family	Ceiling Type	LED	Voltage	# of LEDs (Ambient)	Ambient Light Level	Exam Light Level	Reading Light Level
[Blank]=Standard BAA=Buy American Act TAA=Trade Agreements Act	MPR3=3 Compartment Ambient, Exam Reading	G=Grid <sup>(2)</sup>	LD4=LED Linear Module	UNV=120V- 277V	1=1 LED Module in Cross- Section 2=2 LED Modules in Cross- Section	STD=Standard LO=Low HI=High	STD=Standard LO=Low HI=High	STD=Standard LO=Low HI=High
<b>Notes</b> (1) Only product configurations with these designated prefixes are built to be compliant with the Buy American Act of 1933 (BAA) or Trade Agreements Act of 1979 (TAA), respectively. Please refer to <a href="#">DOMESTIC PREFERENCES</a> website for more information. Components shipped separately may be separately analyzed under domestic preference requirements.		<b>Notes</b> (2) For flange applications, order the accessory DFCL24W-U on a separate line item. Compatible with 15/16" NEMA 6 grid ceiling system.						

Color Temperature	Driver Type	Ambient Diffuser	Exam Shielding	Options	Accessories
Color Temperature	Driver Type	Ambient Diffuser	Exam Shielding	Options	Accessories <sup>(10)</sup>
30=3000K 35=3500K 40=4000K 50=5000K	EDC3=Electronic Driver, Non-Dimming, 3 Circuits <sup>(3),(4)</sup> EDD3=Electronic Driver, 0-10V Dimming 10%, 3 Circuits <sup>(3),(4)</sup> ED1D3=Electronic Driver, 0-10V Dimming 1%, 3 Circuits <sup>(3),(4)</sup>	FA=Frosted Acrylic, Linear Ribbed	[Blank]=Pattern 12 Acrylic clear, 0.125" thick OPL=White Smooth Opal lens, 0.080" thick	AM=Antimicrobial Matte White Paint LVCP=Low Voltage Relay, 2load, Non-Dimming. Typically controlling <sup>(5),(6)</sup> Ambient and Reading. Specify 120 or 277. LVC3/AD/RD/E=3 load Low Voltage Relay, Dimming on 2 loads. <sup>(9)</sup> Ambient w/Dimming, Reading Dimming, Exam non-Dimming LVC3/AD/R/ED=3 load Low Voltage Relay, Dimming on 2 loads. <sup>(9)</sup> Ambient w/Dimming, Reading non-Dimming, Exam w/Dimming GLR=Fuse/Holder LLNL=Linear LED Night Light, 11" Length, 600 lumens, 3500K <sup>(7)</sup> LLNLA=Linear LED Night Light, 11" Length, Amber EL7W=7W Emergency Battery Pack EL10W=10W Emergency Battery Pack <sup>(8)</sup> EL14W=14W Emergency Battery Pack 90=90 CRI (Reading, Ambient, Exam)	DFCL-2448W-U=Drywall Framing Kit, Cleanroom, White, 2' x 4', Gasketing included.  Ceiling cutout 24.25" x 48.25" For antimicrobial DFCL, replace "W" with "AMW".
	<b>Notes</b> (3) EDC3, purple and pink low voltage dimming leads not connected. EDD3, purple and pink leads connected to driver, and presented at power supply entry. (4) The 3 Circuits are ambient, reading, and exam. LLNL nightlight is always on a separate circuit by default and is not called out as a fourth circuit.			<b>Notes</b> (5) Must specify voltage. 347V not available. (6) Normally open, mounting contact switch. Contact activation provides illumination seen across Ambient only-on, Reading only-on, Ambient and Reading-on, Ambient and Reading-off. LVCP controls up to 2 loads, non-dimming, to control only reading, specify LVCP/READ. To control only ambient, specify LVCP/AMB. Consult technical support for additional choices. (7) LLNL and/or LLNLA uses 11" LED module (LD4), with separate driver. LLNL or LLNLA are in the exam compartment. (8) EL10W illuminates two 22" LED Modules in the exam compartment. Available with LO or STD exam light level. (9) LVC3, Low Voltage Relay, can operate 3 loads with dimming on up to 2 of the loads. 347V not available. Consult Technical support for additional choices.	<b>Notes</b> (10) Accessories sold separately will be separately analyzed under domestic preference requirements. Consult factory for further information.

## Product Specifications

## Application

- Designed for use in healthcare facilities where exam, ambient, and reading illumination is required in Patient Rooms, Exam Rooms, or Recover Areas

## Housing and Reflector

- Durable aluminum construction; 0.047" thickness
- High gloss, electrostatically applied, white powder coat finish
- Average minimum reflectance 92%
- Matte white powder coat finish on the ambient reflectors
- Optional matte white antimicrobial finish

## Lens

- Exam- Pattern 12 acrylic lens; 0.125" thickness, standard. White smooth opal overlay lens option; 0.080" thick
- Ambient linear ribbed, frosted acrylic center lens
- Reading semi-specular aluminum reflector

## LEDs

- Available in 3000K, 3500K, 4000K and 5000K; 80 CRI minimum. 90 CRI available
- Choice of Standard, Low or High illumination levels for exam, ambient and reading compartments
- 1 LED linear module in reading compartment at head of bed for patient use
- 2 LED linear modules for soft illumination in ambient compartment via perforated wings while shielding direct source for glare-free illumination
- 4 LED linear modules in exam compartment for focused high intensity illumination
- Projected life is 50,000 hours at 70% lumen maintenance

## Electrical

- Electronic driver 120-277V, dimming driver standard
- 0-10V dimming down to 1% or 10%
- Non-dimming available
- LVCP, Low Volt Relay 2 loads, non-dimming
- LVC3, Low Volt Relay 3 loads, w 2loads dimming, 1 load on/off

## Compliances

- cULus listed for damp locations

## Warranty

- Five year limited warranty on LEDs and Electrical, consult website for details.  
[www.cooperlighting.com/legal](http://www.cooperlighting.com/legal)

