



ArcMED Healthcare Solutions

Lighting to Enhance the Patient Experience



Lighting for better healthcare experiences. Technology for a brighter tomorrow.

Purposeful, human-centric lighting solutions promote positive healthcare experiences and outcomes, for healthier medical facilities (in every sense).





Healthcare Design Evolution

Architectural Lighting for the modern healthcare facility

Healthcare facility design has evolved in recent years, shifting from a sole focus on function to highlight the importance of **aesthetics** - providing customers with the most hospitable "patient experience" possible. This trend has been accelerated by the **flexibility** and **versatility** offered by LED lighting and controls.



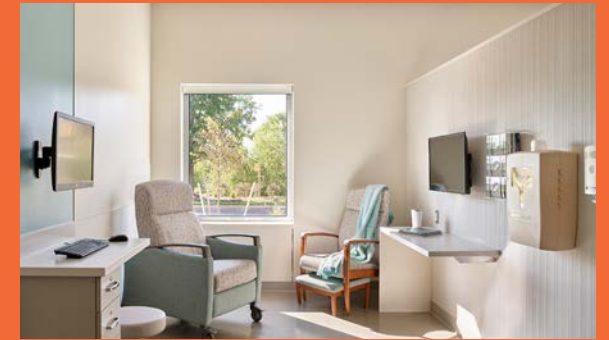


ArcMED is the preferred lighting choice for healthcare facilities.

ArcMED products are high performing, specialized medical luminaires that are focused on the clinical spaces within a healthcare facility.

In addition to ArcMED products being highly functional, a top priority is aesthetics; to allow ArcMED products to contribute to the beautification of healthcare design – and help improve the patient experience, well-being, and outcome.

Let ArcMED handle the details, so you don't have to!



Fail-Safe

APR

ArcMED Patient Recessed 4 Function 2x2 /2x4

Designed to exude simple elegance into the patient room, the APR brings clean lines and pleasing illumination to the patient room. With all compartmentalization done behind the lens, the APR presents a fully luminous wipe-down surface for easy cleaning. The APR is also offered with a polycarbonate lens and is well suited for use in behavioral health applications.



2x4 shown
Ambient & Exam illuminated

2x4 shown

Top Product Features

- Fully luminous appearance, smooth bottom lens for easy cleaning and wipe-down
- Easy and quick access to LEDs and electrical from room side, using a fastener-free door design
- Illuminate compartments individually, or combine functions for a desired effect
- Over 28,000 lumens from a 2x4 luminaire (ambient/exam)
- Optional clear bottom polycarbonate lens for behavioral health applications
- VividTune white tuning to vary the CCT for patient well-being

Certifications and Ratings



Applications

Patient Room • Behavioral Health • Exam/Procedure Room

Fail-Safe



APN

ArcMED Patient Narrow 4 Function 6" x 4'

Offering all the functionality of a versatile over-the-bed patient room fixture in a narrow package, the APN brings the "lines of light" aesthetic into the patient room. Positioned on both sides of the bed, the APN moves lighting out of the patient's direct line of sight, frees up precious ceiling space, and enables shadow-free examination.



Top Product Features

- 6" on center T-grid, 3-1/2" aperture
- Easy and quick access to LEDs and electrical from the room side, using a fastener-free door design
- Fully luminous appearance, smooth bottom lens, for easy cleaning and wipe-down
- Illuminate compartments individually, or combine functions for a desired effect
- Up to 15,000 lumens from a pair of 4' APN luminaires
- Polycarbonate clear bottom lens available for behavioral health applications
- VividTune white tuning, to vary the CCT for patient well-being



Applications

Patient Room • Behavioral Health • Exam/Procedure Room

Certifications and Ratings

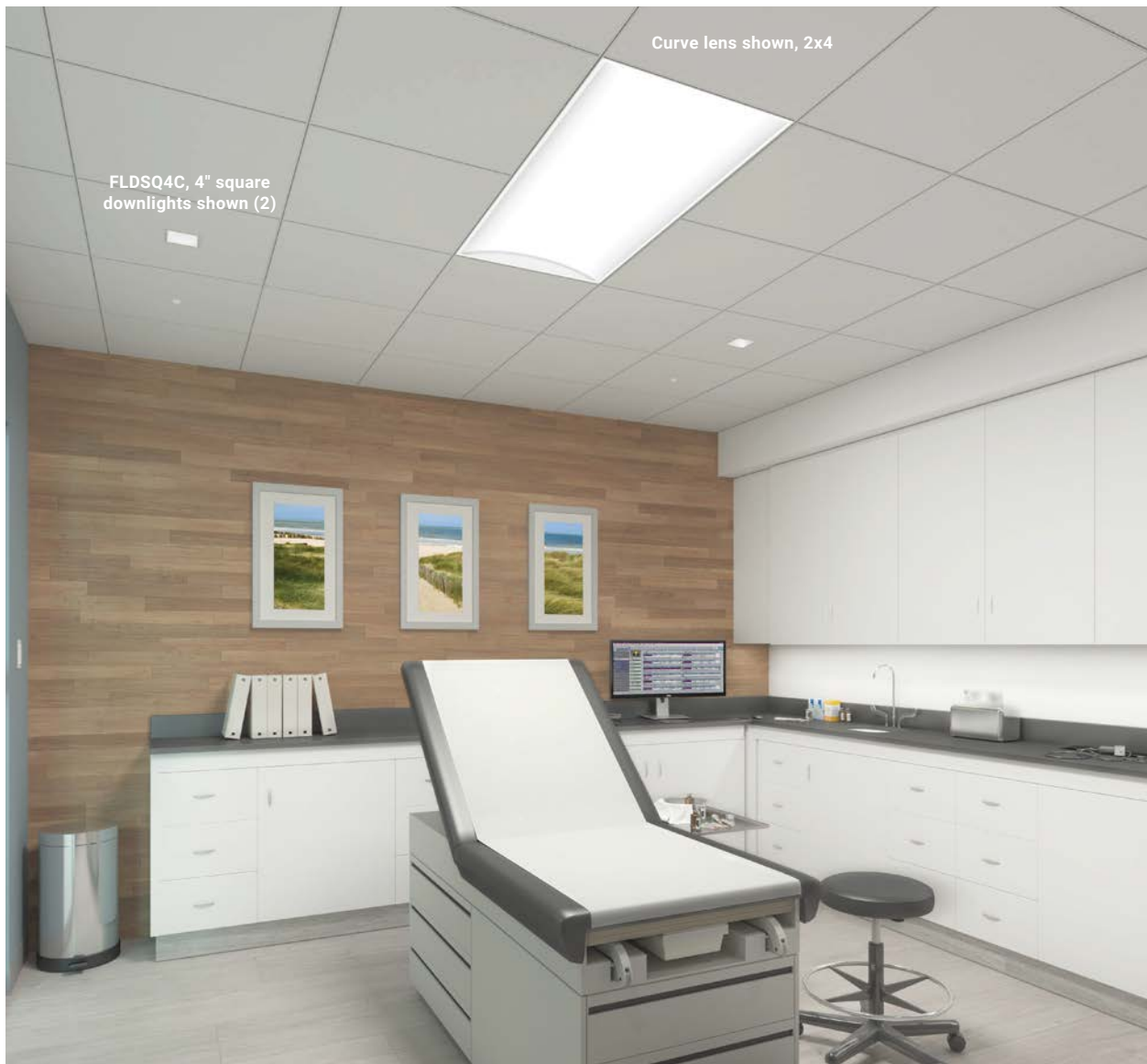


Fail-Safe

Sealed InDepth

ArcMED InDepth Series

Combine form and function with the ArcMED Sealed InDepth luminaire. Three luminaire sizes, five lens options, and multiple lumen packages and color temperatures allow for use in a variety of applications. The clear bottom lens provides a tight seal against water and dust ingress, protects against impact resistance, and enables quick and easy wipe-down/cleaning. VividTune white tuning for enhanced patient well-being.



Top Product Features

- Five regressed lenses for visual interest – 1" and 2" deep cube, curve, double barrel, and sweep
- Clear bottom lens provides a tight seal against dust, debris, and water ingress – IP66 rated
- Clear bottom polycarbonate lens provides impact resistance – IK10 rated and ideal for behavioral health applications
- NSF compliant for food related applications – easy cleaning and wipe-down
- ISO5 rating, ideal for cleanrooms, laboratories, pharmacies, other sanitary areas
- Up to 9,000 lumens

Certifications and Ratings



Applications

Healthcare • Behavioral Health • Cleanroom • Education • Laboratory • Wet Location

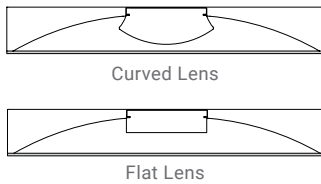
Fail-Safe

FCZ

Sealed Center Basket



The FCZ Fail-Safe Center Basket luminaire brings an exciting visual aesthetic into specialty areas within a healthcare facility. Starting from a center basket luminaire used in many routine applications, Fail-Safe fits the luminaire with a sealed clear bottom lens, precisely locating it on the bottom edges, ensuring a sealed product that performs in any medical environment. Choose a clear polycarbonate bottom lens and the FCZ is ideal for behavioral health settings.



Top Product Features

- Sealed frosted center basket for use in healthcare, wet location, sterile environments
- ISO-5-8 listed for use in cleanroom applications
- Up to 17,000 lumens (2x4), 11,000 lumens (2x2) for use in a variety of ceiling heights and illumination requirements
- NSF listed for easy cleaning/wipe-down
- Optional polycarbonate clear bottom lens for behavioral health applications
- VividTune white tuning to vary the CCT for patient well-being
- IP65 rated/wet location listed – protection from dust and water



Applications

Examination Rooms • Procedure Rooms • Behavioral Health • Patient Rooms • Laboratories • Isolation Rooms

Certifications and Ratings

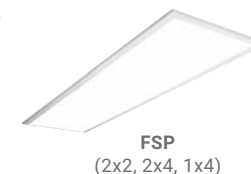
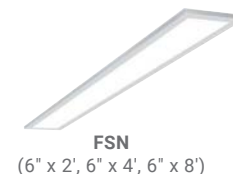
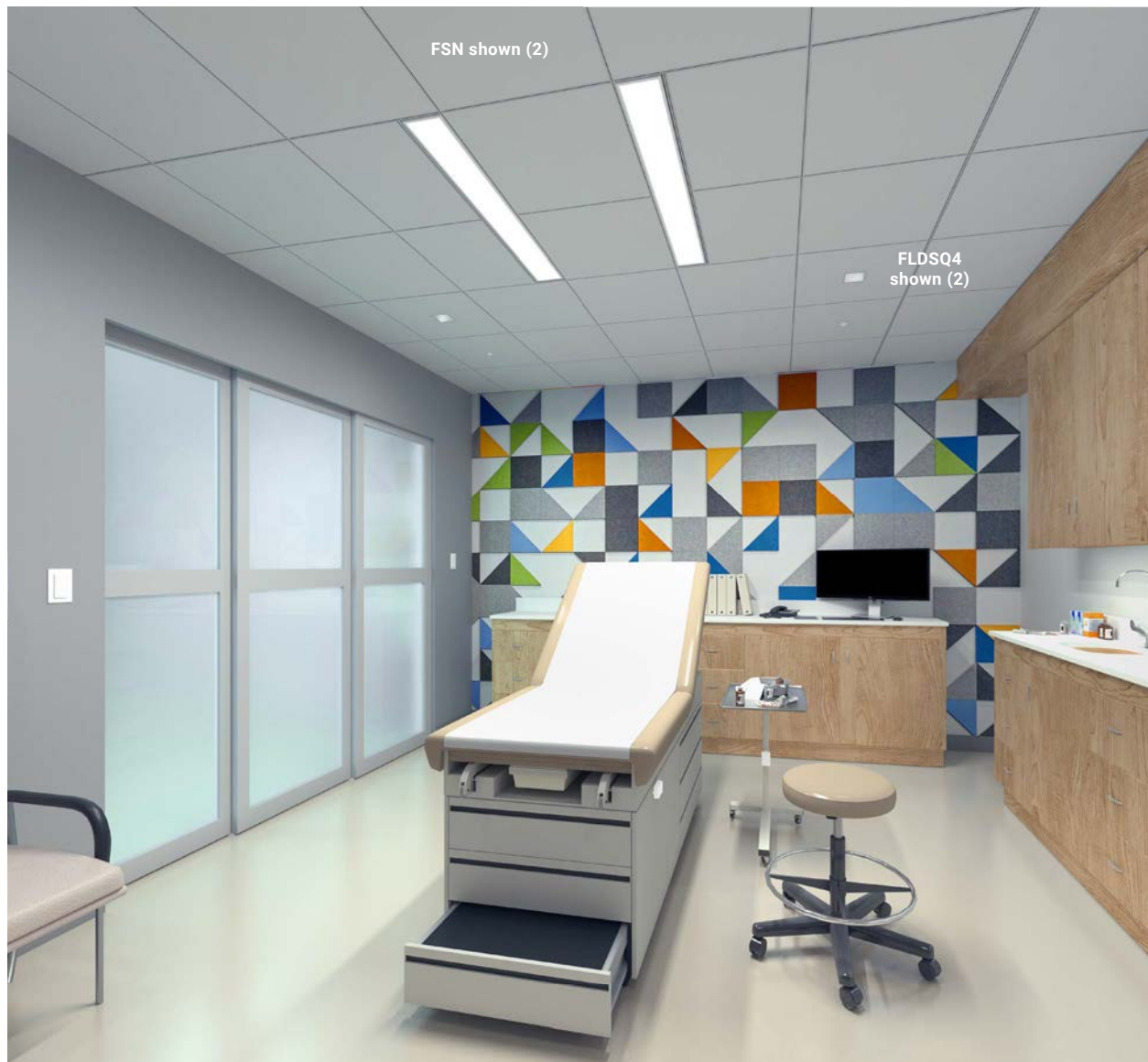


Fail-Safe

FSN & FSP

Sealed Narrow Panel (FSN) Sealed Panel (FSP)

FSN and FSP offer an excellent solution for sterile and wet location environments, well suited for medical spaces in a healthcare facility. Available in multiple lengths, the FSN provides a versatile solution for areas where form and function need to be balanced. The FSP is available in three sizes to suit the needs of the space. Fitted with the optional polycarbonate lens, the FSN and FSP also provide an impact-resistant robust luminaire, with a beautiful appearance— ideal for behavioral health applications.



Top Product Features

- 4" aperture, 6" grid width providing sleek lines of light (FSN)
- ISO-5-8 rated for cleanroom/sterile environment applications
- 2', 4', and 8' sizes available (FSN). 1x4, 2x2, 2x4 (FSP)
- Clear bottom lens seals fixture to prevent dust and water intrusion. IP66 rated
- Optional polycarbonate lens provides impact resistance. IK10 rated
- Selector switch on the fixture back to adjust color and select lumens on site as desired (FSN)
- FSN, with a 4" aperture is ideal for use as a wet location slot fixture

Certifications and Ratings



Applications

- Exam Rooms • Procedure Rooms • Patient Rooms • Laboratories • Cleanrooms • Behavioral Health • Pharmacies • Wet Location Slot/Canopies

Fail-Safe

MPBL & MWL Patient Bed Light



The MPBL patient bed light provides an aesthetically pleasing solution for headwall-mounted patient bed lighting. Indirect uplight provides pleasant ambient lighting and direct downlight can be used during examinations by medical staff.

MWL offers many of the same features as the MPBL, while providing a more traditional style. Choose the polycarbonate lens option for behavioral health applications.



MPBL

MWL (2' shown)

Top Product Features

- Ideal for patient rooms when over-the-bed wall mount illumination is preferred. 2' length is ideal for patient bathrooms.
- Aesthetically pleasing fixture provides a style upgrade to the patient room
- Die-cast aluminum end caps standard – flat end caps available (MPBL)
- Dedicated LED divider for independent up/down switching
- Extruded aluminum rail and housing for durability and aesthetics
- MWL available when a more traditional style is preferred

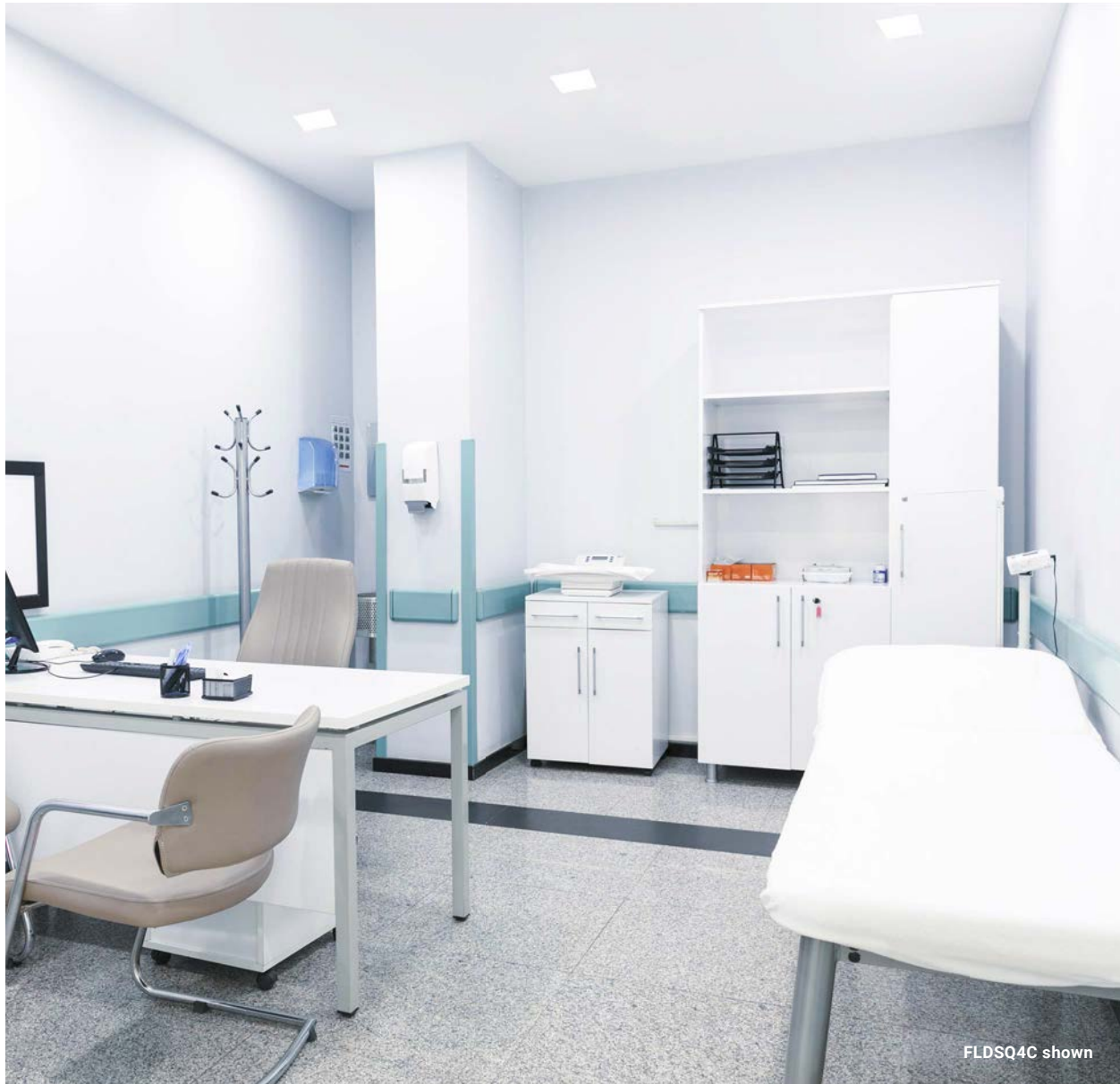



Applications

Patient Room • Exam/Procedure Room

Certifications and Ratings





Fail-Safe 
FLD4C/FLD6C/FLDSQ4C
 Round and Square Sealed & Vandal
 Resistant Downlights

Round downlights are often an essential part of any healthcare facility design. Fail-Safe offers a 4" and 6" downlight as well as a 4" square downlight, for customers who choose downlights for focus areas. Offered with multiple reflector and light engine options, the downlight provides a multitude of benefits, with the ratings required for specialized areas of the healthcare facility.



Top Product Features (FLD4C/6C)

- Sealed open, sealed bottom lens, or sealed bottom trim ring for a variety of styles and safety levels
- Optional bottom clear polycarbonate lens for behavioral health applications
- Wet location standard. Class 100 (ISO5-8) for use in sterile environments
- NSF listed for easy cleaning/wipe-down
- IP65/66 rated for dust/water ingress protection
- Clear glass, acrylic, or polycarbonate bottom lens for a variety of protection levels
- **FLDSQ4C** sealed/medical is gasketed to maintain an IP65 rating. The high abuse option uses a frosted polycarbonate upper lens and (4) tamper resistant screws to provide protection

Certifications and Ratings



Applications

Examination Rooms • Procedure Rooms • Behavioral Health • Patient Rooms • Laboratories • Pharmacies

Fail-Safe

MRI-ATR

MRI Fully Luminous Recessed



In a space that has traditionally been illuminated using round downlights, the fully luminous MRI-ATR recessed luminaire provides a crisp, clean appearance for quick and easy wipe-down. Vary the illumination levels from low, soft illumination for a pleasing atmosphere – to high light levels for examination purposes, as necessary.



Top Product Features

- Specifically designed for MRI rooms, using non-ferrous materials
- 1x4, 2x2, and 2x4 sizes
- Minimal frame design enables fully luminous look – edge-to-edge luminous lens!
- Easy cleaning and wipe-down
- Frosted acrylic lens for a crisp, clean appearance, or choose from a multitude of visual therapy images
- Available in a range of lumen outputs
- Remote driver and driver enclosure
- Multi-channel MRI filters



Applications

MRI Rooms

Certifications and Ratings



Fail-Safe

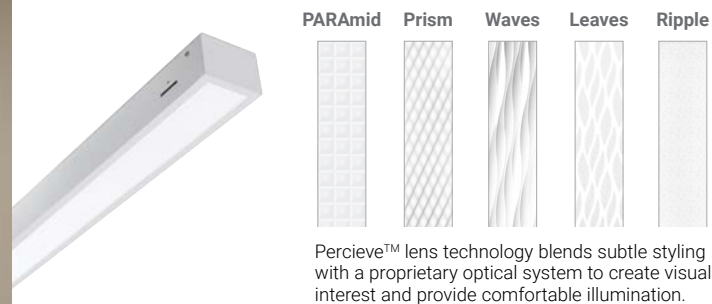
MRI-ASR

2" & 4" Slot



The MRI-ASR slot offers an ideal option for a facility to break from the traditional 6" round downlight, to illuminate the MRI suite. The 2" and 4" wide slot brings sleek lines of light to the MRI suite to provide pleasing ambient illumination. Excellent for use in hybrid MRI operating room applications.

Also integrate the MRI-ATR luminaire for a soothing, calming effect on patients.



Top Product Features

- Specifically designed for MRI suite, constructed of non-ferrous materials
- 2', 4' and 8' lengths with 2" and 4" apertures
- Minimal frame design allows fully luminous aesthetic
- Fully illuminated frosted acrylic lens for a crisp, clean appearance. Easy cleaning and wipe-down
- Available in 250, 500, 750, and 1000 lumens/foot
- Remote driver and driver enclosure
- Multi-channel MRI filters

Certifications and Ratings



Applications

MRI Suites

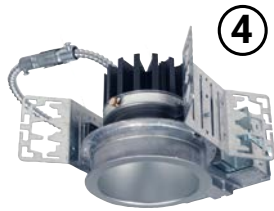
Fail-Safe



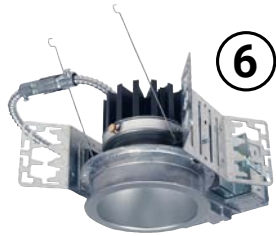
MRI-FLD4C 4" Downlight

MRI-FLD6C 6" Downlight

Illuminate the entire MRI suite with either 4" or 6" round downlights, or use a combination of linear slot or troffers for general lighting - with the downlights being used for task lighting. Simple 0-10V, 1% dimming is standard, for effortless dimming to meet the needs of the client. Choose from warm 2400K color temperature to a vibrant 5000K, to perfectly suit the needs of the patient and healthcare professional.



MRI-FLD4C



MRI-FLD6C

Top Product Features

- FLD4C available from 500 to 2500 lumens. FLD6C available from 1000 to 4000 lumens, for design flexibility
- Standard 1% dimming drivers (remote) for patient comfort
- Non-ferrous construction designed specifically for MRI applications
- Remote drivers and enclosures available to ensure trouble-free operation
- MRI filters offered to mitigate EMI/RF interference for optimal performance
- Color temperatures from 2400K to 5000K, 1% dimming remote driver standard



Applications

Operating Rooms

Certifications and Ratings



Fail-Safe

ORL

Operating Room, Recessed Ceiling

ORL provides supplemental, asymmetric/symmetric lighting in the operating room. Typically positioned around the perimeter of the table, choose the ORL in 2x2, 2x4, and 1x4 sizes.

FLD6C/OR is a 6" round downlight that often accompanies the ORL into the operating room. Strategically placed throughout the operating room, the 6" downlight illuminates key areas of the room, with comparable features of the ORL.



ORL 2x4



FLD6C/OR

Top Product Features

- IP66 rated standard for dust and water ingress protection
- MILSTD 461G available for minimized conducted and radiated emissions
- NSF listed for easy cleaning and wipe-down
- 2x2, 2x4, 1x4 sizes for placement in crowded ceilings
- Up to 32,000 lumens for a variety of illumination levels (2x4)
- Green (520nm) LEDs available for enhanced visual acuity
- ISO5-8 compliant for sterile environments

Certifications and Ratings



Applications

Operating Rooms

Fail-Safe

MAE

Medical Ambient / Exam / Reading



Features

- Frosted, ribbed acrylic center ambient lens, for pleasing illumination. Available in 2x2 and 2x4.
- Outer frosted exam lenses provides precise illumination to effectively perform the exam function
- Reading and night-light functions available
- Low voltage relay available to provide patient control of the reading and ambient lighting
- Clear bottom lens and door frame, for easy cleaning and wipe-down
- Choose a polycarbonate clear bottom lens for behavioral health applications

Applications

Patient Rooms, Exam and Procedure Rooms, Recovery Areas, PACU's



Fail-Safe

MNAE

Medical Narrow Ambient / Exam



Applications

Patient Rooms, Exam & Procedure Rooms, Recovery Areas



Features

- Always used in pairs, positioned adjacent to the sides of the bed, provides shadow-free exam illumination
- Recessed mount, 8" on-center T-grid ceiling system. For hard ceilings, drywall framing kit available. 36", 48", and 54" lengths.
- Exam, ambient, night light, and reading light available
- 7,000+ lumens for exam function, 4000 lumens for ambient illumination, and 1500 lumens for reading
- NSF compliant for easy cleaning and wipe-down
- IP65 available for dust and water ingress protection
- Amber night light available

Fail-Safe

MPR3

Patient Room, Three Compartment



Features

- Three functions in a single 2x4 luminaire, to optimize ceiling space
- 7,000+ lumens for exam function, 4000 lumens for ambient illumination, and 1500 lumens for reading
- Frosted acrylic center lens for pleasing ambient illumination
- Parabolic shielding in the exam function, with an opal overlay lens, to minimize glare
- Night light available, for safety during nighttime activities

Applications

Patient Rooms, Exam and Procedure Rooms, Recovery Areas



Fail-Safe

UCL

Undercabinet



Features

- 1' to 4' lengths, in 1' increments. Custom lengths available via deviation request.
- 750 nominal lumens / foot
- Acrylic or polycarbonate lens available, prismatic or opal
- UCLV captivates the lens, for a robust luminaire in behavioral health applications, with polycarbonate lens
- Tamper resistant hardware available
- Powder-coat white painted steel standard. Choose from aluminum or stainless steel construction

Applications

Nurse Stations, Patient Rooms, Exam and Procedure Rooms, Work Areas



Fail-Safe

Circadian

Night-Lights



Applications

Patient Rooms, Exam and Procedure Rooms, Recovery Areas, PACU's, Corridors



Features

- Choice of louvered or scoop design, to fit perfectly with the design intent
- 4 field-installable lenses accompany each unit – clear, amber, red, and blue gels
- Fits into standard single gang j-box for easy installation
- MCL has an illuminated push-button switch; ideal for nurse chart illumination
- Thru-wall j-box available, to accommodate wall thicknesses from 3.5" to 6"
- Tamper resistant screws available to discourage entry or misbehavior

Fail-Safe

ENC/ENW/ENV

Cleanroom/Wet Location/Vandal Resistant



Features

- Aesthetically pleasing recessed luminaire
- Choose from ENC (cleanroom), ENW (wet location), or ENV (vandal resistant) for a variety of applications
- Quick and easy cleaning and wipe-down
- Wet location standard, IP65 standard for dust and water ingress protection
- NSF listed for use in food services/food preparation environments
- Available in 2x2, 2x4, 1x4, and 1x2 sizes

Applications

Patient Rooms, Corridors, Food Preparation, Laboratories, Clean Rooms, Pharmacies, Behavioral Health





Lighting for the entire campus

A healthcare facility campus encompasses a wide range of spaces, each with unique requirements. Cooper Lighting Solutions as a wide range of visually appealing products across its brands to meet the needs of these varied spaces.



The modern healthcare campus should feel

- Inviting
- Hospitable
- Clean
- Comfortable
- Safe

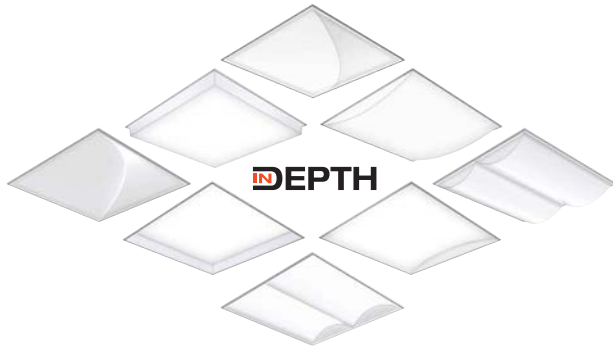
Designing a campus to make patients feel at home improves **patient and staff** satisfaction, creating an environment better suited to healing

Cooper Lighting Solutions has the products and technology needed to design your healthcare campus to enhance patient experience

Corelite

InDepth LED Specification

The InDepth family of fixtures is designed to create architectural ceiling topography with regressed and drop lens options. InDepth offers an ideal solution to add character and contrast in the ceiling of large spaces.



Top Product Features

- Multiple lens options in multiple configurations (Regressed and Drop, Curve and Cube)
- Create ceiling topography with regressed and drop lens options
- Regress lens provides optical cut off w/ smooth lens for reduced glare
- Extruded aluminum channels form rigid housing for maximum durability
- Extruded channel allows field conversion (regress or drop arrangement)



Applications

Hallways, Lobbies • Waiting Areas • Examination Rooms

Certifications and Ratings





Corelite

Perceive Recessed LED

The Perceive Specification series blends subtle styling with a proprietary optical system to create visual interest and provide comfortable illumination. Offered with several unique optical patterns, Perceive creates the illusion of depth and adds dimensionality to any space.



Top Product Features

- Proprietary optical system based on human perception of depth
- Multiple dynamic 3D optical patterns
- Glare-reducing performance provides comfortable high-quality illumination
- Available in 2x2, 2x4, and 1x4 sizes
- Thoughtfully designed wireless control options

Certifications and Ratings



Applications

Hallways • Lobbies • Waiting Areas • Examination Rooms

Neo-Ray

Define

LED Suspended

The Define series of luminaires is the ultimate in minimalist simplicity, providing clean, uniform lines of light in any architectural environment. Available in a variety of mounting options, including recessed, surface, and suspended, the Define family proves a highly versatile option for creating each space's unique aesthetic.



Top Product Features

- Surface mount slot family in 2in, 3in, 4in and 5in housing sizes
- Specifiable to the nearest 1ft
- Multiple lensing options: flush satin, drop, regressed and asymmetric
- Multiple lumen packages
- 0-10V dimming standard, DALI dimming available



Applications

Lobbies • Waiting Areas • Atriums

Certifications and Ratings





iO

iO CoviO

Architectural LED Cove Light

The iO CoviO provides architectural cove lighting to help increase the visual appeal in a space, while also increasing patient comfort by reducing the need for direct illumination sources. The sealed construction of the CoviO allows it to be used in both indoor and outdoor spaces, to create a continuity of aesthetic throughout a facility.



Top Product Features

- Cove lighting fixture with integral driver
- Up to 1500 lm/ft (3 light level options at 500, 1000 and 1500 lm/ft)
- IP66 rated for continuity of lighting from interior to exterior spaces
- 1% dimming, 0-10V (1% - 100%)
- 90 CRI standard
- Up to 130 lm/W
- Up to 300 ft run from a single power drop

Certifications and Ratings



Applications

Hallways • Patient Rooms • Nurses Stations • Entry Canopies

Shaper

Shaper Sense Acoustic Lighting

Shaper Sense is a new and innovative line of lighting products that integrate lighting and acoustic sound absorption, making it an ideal option for elevating the aesthetics in a space while reducing noise to improve patient comfort by reducing noise in the busiest spaces of a healthcare facility.



Top Product Features

- Partnership with industry leading acoustic materials company FilzFelt
- Choice of 60+ 100% Wool Design Felt color selections
- NRC = 1.4, SAA = 1.38
- 3000K at 90 CRI/3500K at 80 CRI/4000K at 80 CRI
- Lumen range: 2400 to 3900+
- Edge-lit LED technology acts as a transparent window when light is off



Applications

Lobbies • Atriums • Waiting Rooms

Certifications and Ratings





Invue

ARB Arbor Post Top

The Arbor Post Top brings architectural style to area and site lighting. The gentle curvature of its appearance lends it well to creating a welcoming environment, while providing the performance needed for lighting outdoor spaces. The Arbor is also offered in bollard and sconce forms, allowing a uniform appearance across the outdoor space of a campus.



Top Product Features

- Low copper content two piece aluminum housing
- WaveStream LED optics
- Type II, III and IV asymmetric and type V symmetric NEMA distributions
- Up to 105 Lms/W
- 4000K @ 70 CRI standard, 3000K @70 CRI and 80 CRI optional
- IP66 rated housing
- 3G vibration rated (post top) and 1.5G (single/twin pole accessories)

Certifications and Ratings



Applications

Greenspaces • Outdoor Meditation spaces • Walkways

Portfolio

LDA2B

LED 2-3/4" Adjustable/ Slope Downlight

The LDA2B 2-3/4" adjustable accent downlight features field-interchangeable optics, making it a highly versatile fixture. The LDA2B can be used in a broad range of applications across a healthcare facility campus to build the unique appearance of the space, and create a welcoming and hospitable environment.



Top Product Features

- Lumens: 500-2,000, Interchangeable optics in 5° increments: 10°-70°
- Adjustable accent/slope or lensed wall wash (flat or sloped ceilings)
- Excellent light control and low aperture brightness
- 365° rotation and 45° tilt hold any aiming position
- Round die-cast or spun aluminum reflectors, Holds 2 lens media
- 6 color temperatures: 2400K, 2700K, 3000K, 3500K, 4000K and 5000K CCT



Applications

Lobbies • Exam Rooms • Waiting Areas

Certifications and Ratings





McGraw-Edison

TopTier LED Parking Garage / Canopy Low-Bay Luminaire

The TopTier Parking Garage and Canopy luminaire provides a solution for lighting parking garages to create a welcoming and safe environment. The sleek aesthetic of the TopTier's shape helps it blend in to the space, while the WaveStream technology provides precise optical control to put light where it is needed, increase visual comfort, and reduce glare



Top Product Features

- Lumen output of 3,000 to 13,300 in 5 optical distributions
- More than 90% lumen maintenance after 60,000 hours per IESNA TM-21
- IP66 and 3G vibration rated
- Available in 3000K CCT at 80 CRI, and 3500K, 4000K or 5000K at 70 CRI
- Operating temperature range: -40°C to 50°C

Certifications and Ratings



Applications

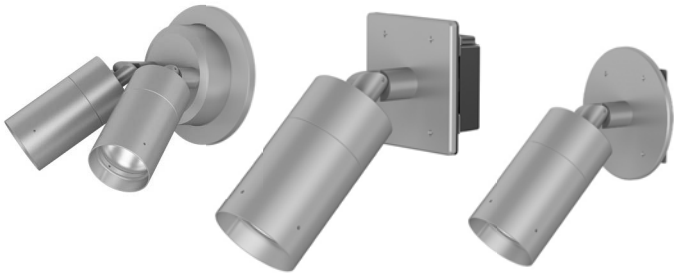
Parking Garages

Lumiere

Lumiere Lanterra

LED Accent and Flood

The Lumiere Lanterra fixture provides an excellent tool for creating a welcoming environment in outdoor spaces of a healthcare facility campus. Available in a variety of mounting types, the Lanterra can be used to accent the unique design features of green spaces, meditation gardens, and landscaping of a campus to create a relaxing space where patients, staff, and visitors can go for rest and reflection.



Top Product Features

- Single and dual head, 180 degree tilt and 340 degree rotation
- Up to 1900 delivered lumens and 103 Lm/W
- Spot, Medium, Flood and Wide optics, Field interchangeable
- Premium machined aluminum, brass, bronze, copper or stainless steel
- Line voltage. ELV, Triac and 0-10V std. dimming
- Holds up to 2 accessories (lens, louver, filters)



Applications

Green Spaces • Pathways

Certifications and Ratings





Sure-Lites

SELA Emergency Light

The Sure-Lites Architectural emergency series (SELA) is a UL924 code compliant solution with a superior aesthetic that eliminates the traditional “bug eye” emergency look. The system features a customizable shroud that can be field painted or covered with wall treatment to allow the fixture to blend into the space.



Top Product Features

- Customized appearance with field paintable aesthetic cover
- LED Source with 29' spacing
- UL924 code compliant, NYC code compliant option
- New construction and retrofittable into any 4" J-box options
- Nickel cadmium battery
- Adjustable optic with forward throw
- Labor savings self-diagnostics

Certifications and Ratings



Applications

Emergency Lighting

AtLite

AUX

Edgelit Exit

Exit Lighting is a crucial component of any facility's design. The AUX exit light is designed to meet the needs of code compliance - including NYC - while maintaining an architectural aesthetic. The AUX both blends in, and stands out, in all the right ways.



Top Product Features

- Universal Mounting: all options included in standard package
- Universal Lens: clear, mirror, white, single and double sided standard
- Eagle Eye self-diagnostics are standard
- Lens snaps into place – no tools required
- Long life, energy efficient LED source
- NYC compliant



Applications

Exit Lighting

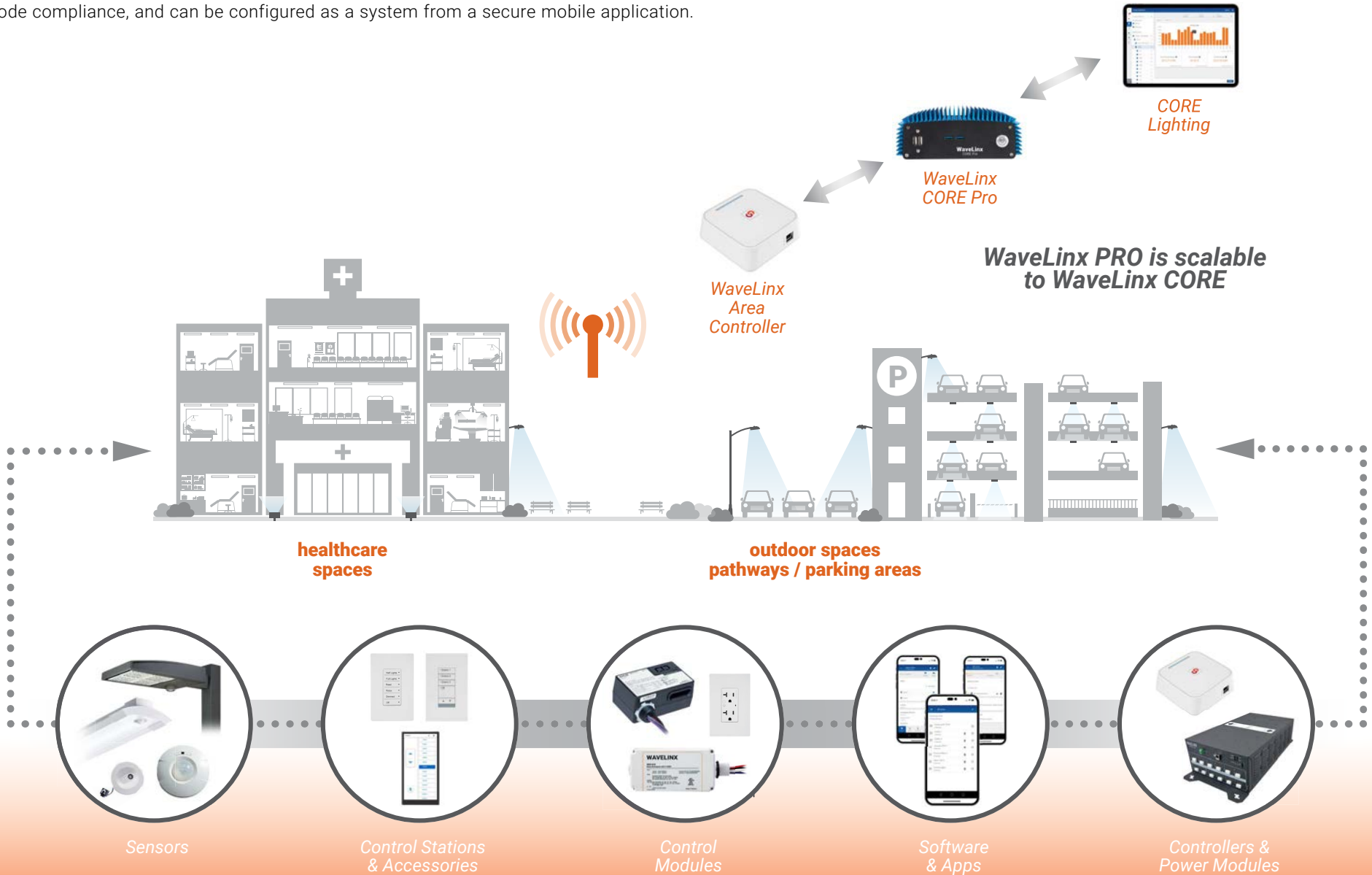
Certifications and Ratings



WaveLinx PRO connected system

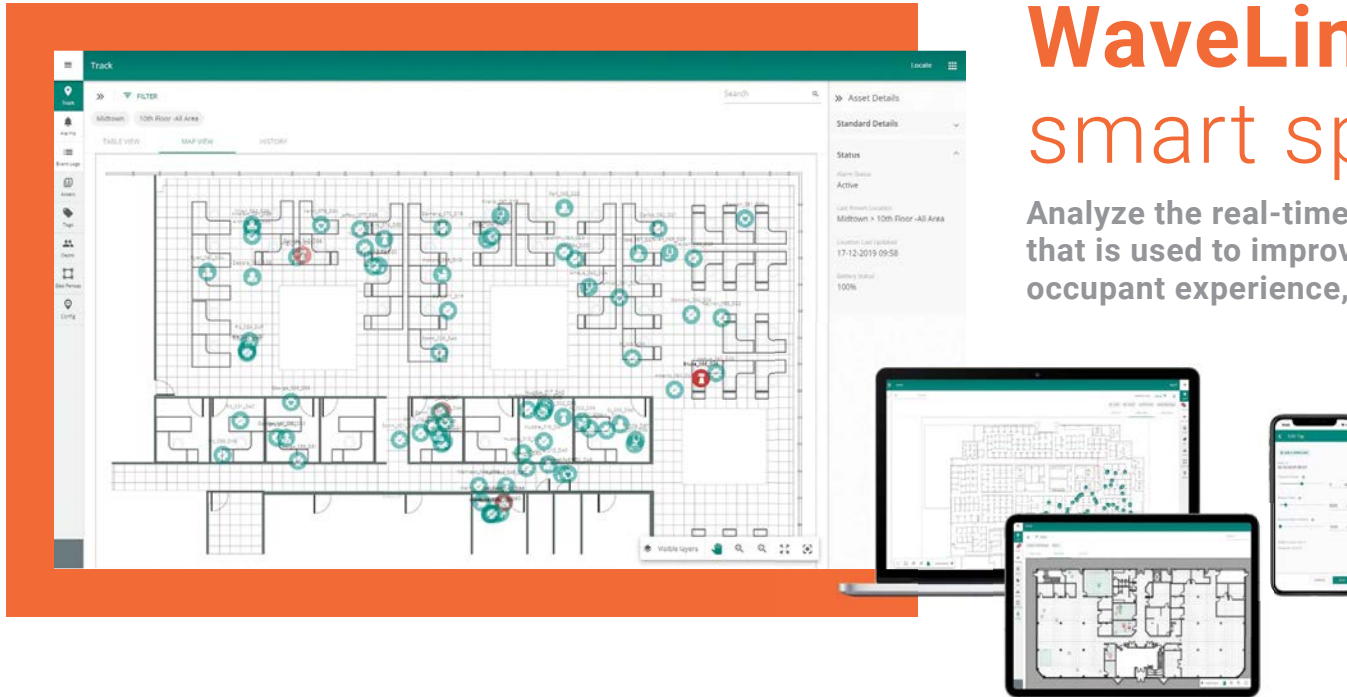
One scalable, easy-to-install system to rule them all

No building infrastructure is better positioned to collect valuable data than your lighting system. With its integrated sensors, WaveLinx provides immediate out-of-the-box performance and code compliance, and can be configured as a system from a secure mobile application.

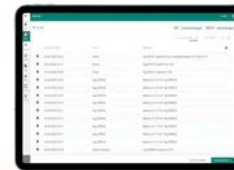
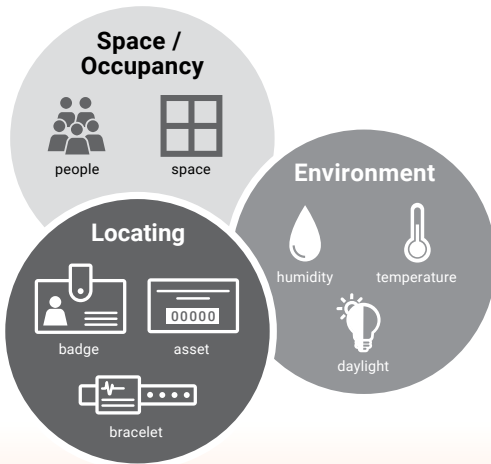


WaveLinx CORE smart spaces platform

Analyze the real-time data to provide actionable information that is used to improve operational efficiency, enhance occupant experience, and promote wellbeing.



Building owners improve operational efficiency, offer optimized experiences to the occupants, and create a healthy well-being environment.



OPTIMIZED facilities

- Increase productivity
- Improve safety & security
- Utilize assets efficiently
- Make informed decisions
- Area power consumption
- Improve maintenance and operational savings
- Device status

Sensing and Locating

The WaveLinx PRO sensor and transmission network is optimally positioned for data collection.

Actionable RTLS Data

Using BACnet and APIs (REST), CORE applications empower you to put your facility data to work.

Why Cooper Lighting Solutions?

For more than 50 years, Cooper Lighting Solutions has helped healthcare facilities unlock the power of lighting to improve wellbeing and sustainability while solving complex business problems.

By partnering with us, you'll not only solve today's pain points, you'll also be able to rise to the healthcare challenges of tomorrow.



Our brands

Industry leading lighting and controls solutions



Ametrix | AtLite | Corelite | Ephesus | Fail-Safe | Fifth Light | Greengate |
HALO Commercial | HALO | Invue | iO | IRiS | Lumark | Lumière | McGraw-Edison |
Metalux | Modular Wiring Systems (MWS) | Neo-Ray | Portfolio | PentaLux |
RSA | Shaper | Streetworks | Sure-Lites | WaveLinx | Telensa







A series of horizontal lines for writing, consisting of a top section with four lines, a middle section with 21 lines, and a bottom section with four lines.

Lighting Brands

Ametrix
AtLite
Corelite
Ephesus
Fail-Safe
HALO
HALO Commercial
Invue
iO
Iris
Lumark
Lumière
McGraw-Edison
Metalux
MWS
Neo-Ray
Portfolio
PrentaLux - 3D Printed Lighting
RSA
Shaper
Streetworks
Sure-Lites
Telensa

Controls Brands

Greengate
Fifth Light
Intelligent Lighting Controls

Connected Lighting Systems and Smart Spaces Platform

WaveLinx



Cooper Lighting Solutions
1121 Highway 74 South
Peachtree City, GA 30269
P: 770-486-4800
www.cooperlighting.com

Canada Sales
5925 McLaughlin Road
Mississauga, Ontario L5R 1B8
P: 905-501-3000
F: 905-501-3172

© 2023 Cooper Lighting Solutions
All Rights Reserved
Printed in USA
Publication No. BR519058EN
May 16, 2023 1:21 PM

Cooper Lighting Solutions is a registered trademark.

All other trademarks are property of their respective owners.

Product availability, specifications, and compliances are subject to change without notice.