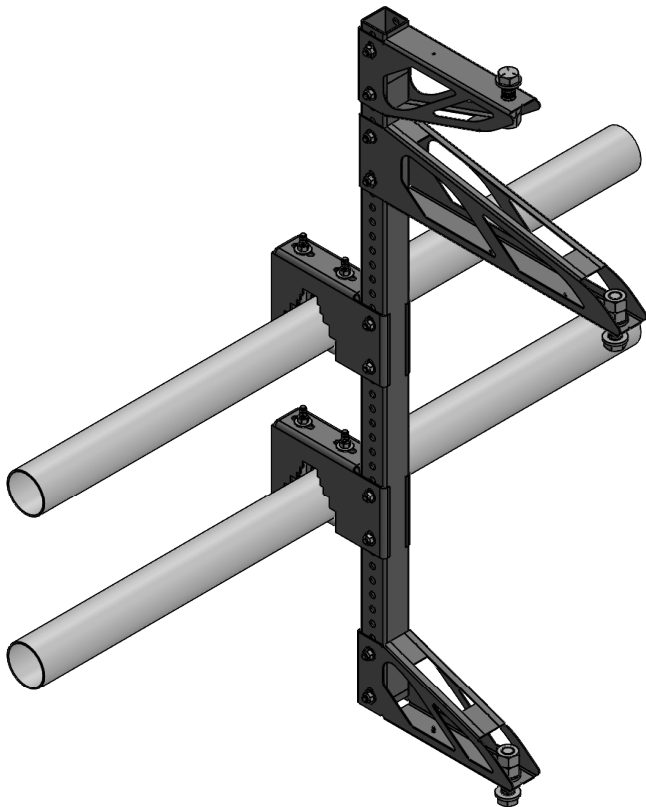


Project		Catalog #		Type	
Prepared by		Notes		Date	



Ephesus

Catwalk Bracket

Universal Mounting to Round or Square Tube
Catwalk Railing

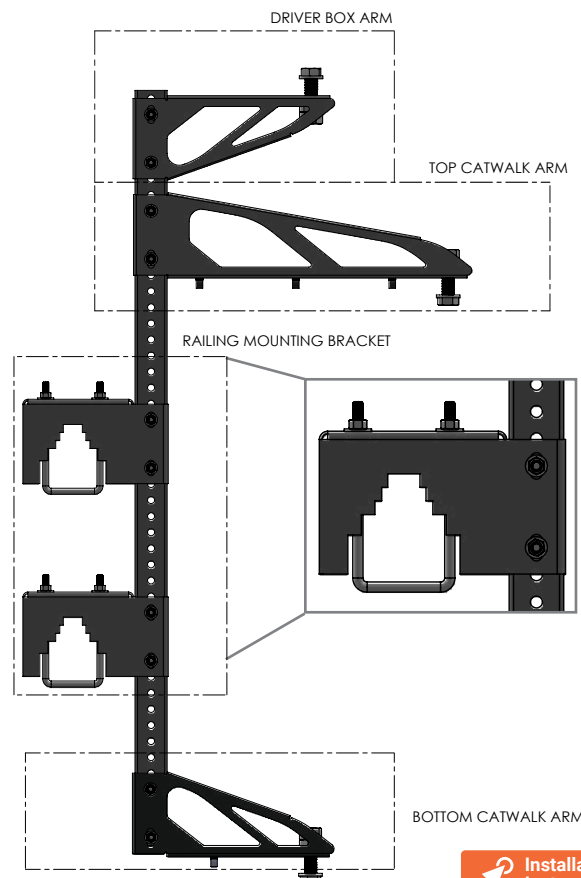
Typical Applications

- Professional Indoor Stadiums & Arenas
- University/Collegiate Indoor Stadiums & Arenas
- Public Assembly & Convention Centers
- Gymnasiums & Field Houses

Notes:

Not to be used in exterior locations or natatorium applications. If this is required, please contact Ephesus for additional mounting options.

Product Certification



Installation Instructions

Interactive Menu

- [Ordering Information](#) page 2
- [Catwalk Bracket Configurations](#) page 2
- [Catwalk Bracket Dimensional Details](#) page 3
- [Railing Mount Type](#) page 4

Compatible Ephesus Luminaires

- LUMASPORT 8 - INTEGRAL
- LUMASPORT 8 - LOCAL
- LUMASPORT 8 - REMOTE
- LUMASPORT 8 PRISM - LOCAL
- LUMASPORT 8 PRISM - REMOTE
- LUMAVISION
- LUMADAPT 8

Ordering Information

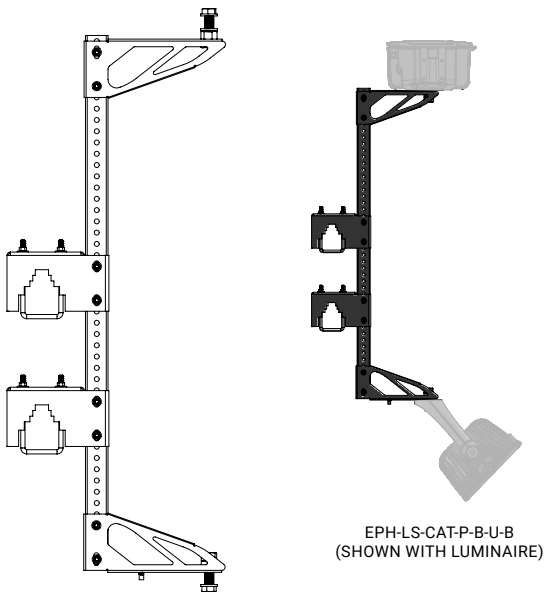
NOTE: A complete Catwalk Bracket order requires a selection entry for **Brand, Family, Accessory, Driver Box Option, Fixture Brackets, Railing Mount Type, and Coating**.

SAMPLE ORDER NUMBER: **EPH-LS-CAT-P-2-U-B**

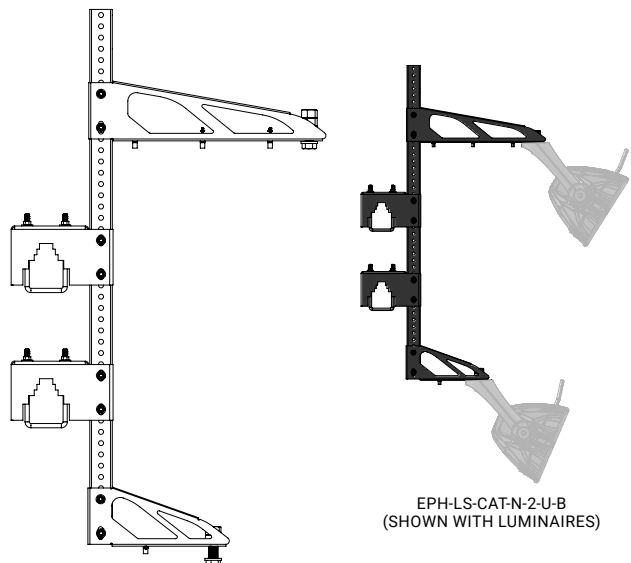
Brand	Family	Accessory	Driver Box	Fixture Brackets	Railing Mount Type	Coating
EPH = Ephesus, Standard TAA =Trade Agreements Act ¹	LS = LumaSport	CAT = Catwalk Bracket	P = With Driver Box Mount N = Without Driver Box Mount	2 = Double B = Bottom Only T = Top Only	U = 1-2 In. round or rectangular railing?	B = Black Powder Coating ³
Notes: (1) Only product configurations with this designated prefix are built to be compliant with the Trade Agreements Act of 1979 (TAA). Please refer to DOMESTIC PREFERENCES website for more information. Components shipped separately may be separately analyzed under domestic preference requirements.					Notes: (2) If another size railing is required, please contact for additional options. (3) B = Black Powder Coating designed for indoor use.	

Catwalk Bracket Configurations

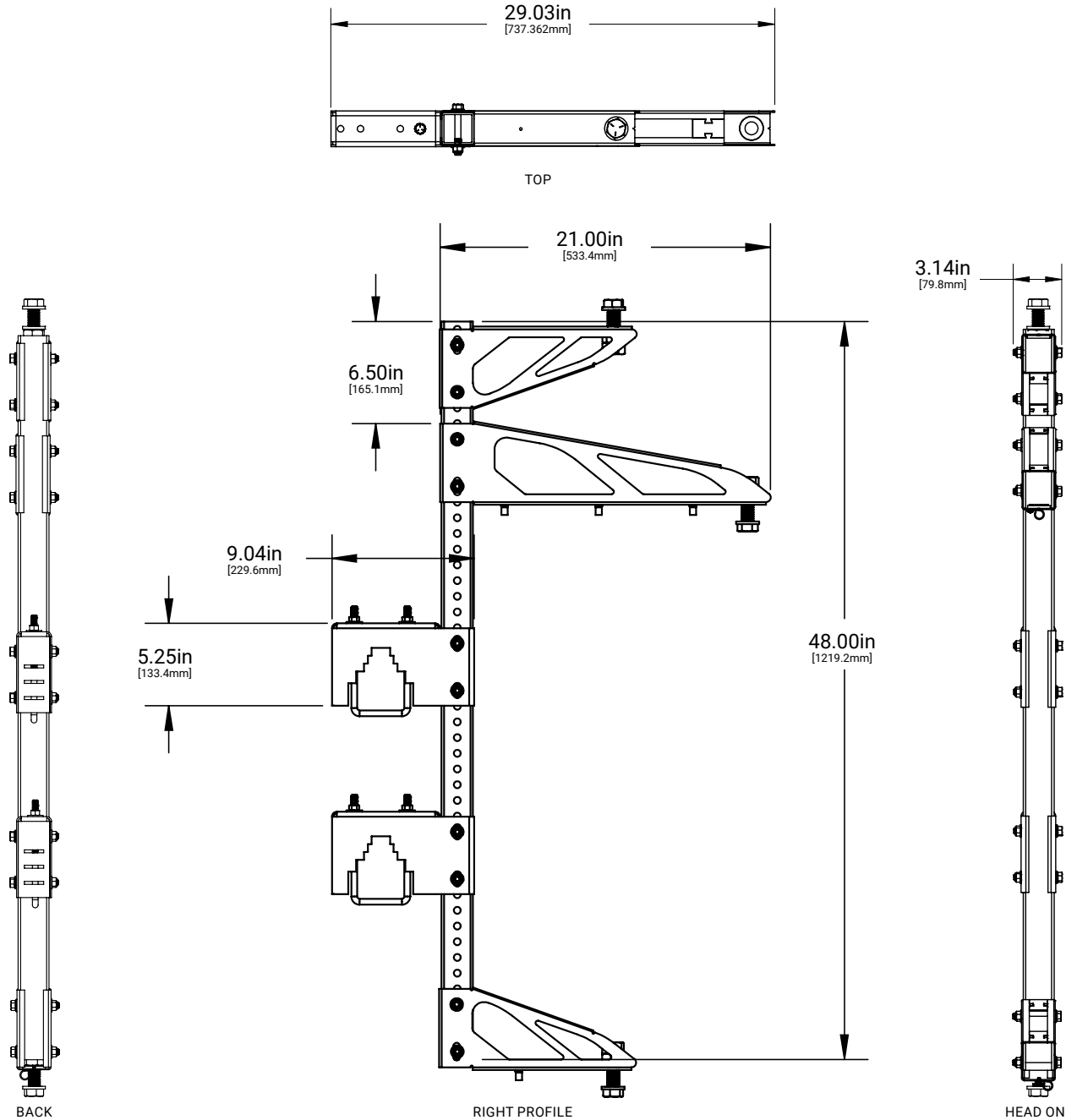
EPH-LS-CAT-P-B-U-B



EPH-LS-CAT-N-2-U-B



Catwalk Bracket Dimensional Details



Configuration Physical Dimensions

CONFIGURATION	WEIGHT (lbs)
EPH-LS-CAT-P-2-U-B	29.5
EPH-LS-CAT-P-T-U-B	26.34
EPH-LS-CAT-P-B-U-B	25.05
EPH-LS-CAT-N-2-U-B	26.34
EPH-LS-CAT-N-T-U-B	23.23
EPH-LS-CAT-N-B-U-B	21.89
Notes: (1) Weights +/-2lbs	

NOTES:

(1) RAILING MOUNT BRACKETS ARE SHIPPED WITH THESE DIMENSIONS AND ARE DESIGNED TO BE ADJUSTABLE TO THE MOUNTING RANGES.

Railing Mount Type

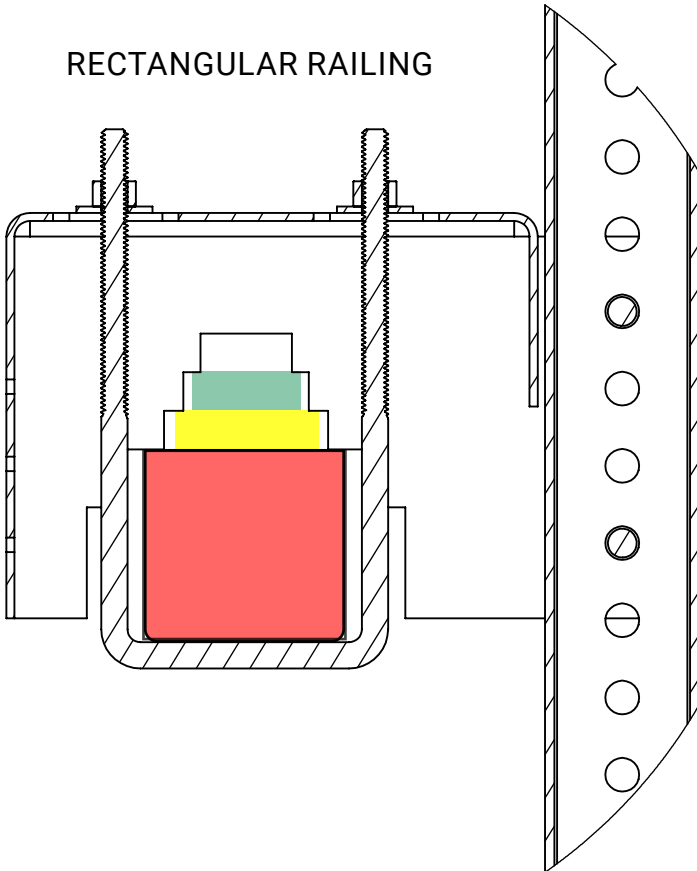
Rectangular
Clamping Range Key (inches)

- = 1.5in x 1.5in
- = 2in x 2in
- = 3in x 3in

Round
Clamping Range Key (inches)

- = Ø 1.5in
- = Ø 2in
- = Ø 3in

RECTANGULAR RAILING



ROUND RAILING

