

CONNECTED COMMUNITIES  
LED Product Selection Guide  
Q1 2022



- Lumark
- McGraw-Edison
- Invue
- Lumiere
- Streetworks

# Delivering unparalleled performance

No matter the complexity of your project, we offer a range of LED products that lower operating costs, reduce energy consumption, and enhance outdoor spaces. Whether you're looking for simple dusk-to-dawn security lighting or cutting-edge functionality, you'll find unmatched quality and attention to detail.

In other words, these products don't just meet standards. They set the standards.

The product selection guides are simple yet powerful tools to help assist with product comparison and selection based on features, performance and value.

- 3 Floodlighting
- 4 Area and Site
- 6 Decorative
- 8 Wall Mount
- 10 Parking Garage and Canopy
- 11 Roadway
- 12 Pathway / Bollards
- 13 Landscape / Accent
- 14 Lighting Controls
- 19 Pole Configurator

## INVUE

» Premium quality luminaires that integrate elegantly into modern day architecture providing stunning beauty by day and visually pleasing light by night.

## MCGRAW-EDISON

» Continuing the legacy of Max McGraw and Thomas Edison, McGraw-Edison sets industry standards for optimized configurations and optical precision to meet the most challenging design specifications for outdoor lighting professionals.

## LUMARK

» Lumark combines value-engineered, specification-grade lighting features with market-leading retrofit solutions to enable contractors to get on and off the job quickly and deliver superior illumination coverage.

## LUMIERE

» Lumiere provides beautiful, precision designed landscape and interior lighting to accentuate architectural design features, creating elegant and distinctive spaces.

## STREETWORKS

» At Streetworks, we empower our utility and infrastructure customers with customizable, robust, and serviceable outdoor lighting products engineered to meet any specification.

Cooper Lighting Solutions offers the widest variety of outdoor floodlighting products in the industry, ideal for applications from commercial buildings to rail yards and everything between. Available in multiple optical distributions, control options, voltages and finishes, Cooper Lighting Solutions carries a floodlighting solution appropriate for any application or budget.



[Click product image for additional information](#)

							
		Tracer	Night Falcon Small	Night Falcon	Night Falcon Large	Galleon II Flood	Vision Flood
PRODUCT	Brand	Lumark	Lumark	Lumark	Lumark	McGraw-Edison	Invue
	Series	TCR	NFFLD-S	NFFLD	NFFLD-L	GFLD	VFS
	Application	Landscape	C&I	C&I	C&I	C&I	Architectural
PERFORMANCE / CERTIFICATIONS	LED Type	Discrete	COB	COB	COB	Discrete	Discrete
	Lumens	530 - 2,900	2,700 - 5,800	10,500 - 23,800	25,900 - 48,000	1,260 - 36,390	1,200 - 6,600
	Lumens Per Watt	138	134	138	145	126	94
	Optical Distributions	3	2	2	2	8	7
	Mounting Options	Knuckle	Slipfitter / Trunnion / Knuckle	Slipfitter / Trunnion / Yoke	Slipfitter / Trunnion / Yoke	Slipfitter / Knuckle / Yoke / Trunnion / Wall	Wall / Knuckle / Slipfitter
	Life (L70) @ 25°C	> 153,000 Hrs	> 399,000 Hrs	> 388,000 Hrs	> 393,000 Hrs	>851,000 Hrs	> 250,000 Hrs
	DLC	Standard	Premium	Premium	Premium	Premium	--
INTEGRATED CONTROLS	Dimming	✓	✓	✓	✓	✓	✓
	Photocontrol	--	✓	✓	✓	✓	✓
	Occupancy	--	--	✓	--	✓	--
CONNECTED	WaveLinx	--	✓	✓	✓	✓	--

Our outdoor LED lighting solutions for area and site applications combine world-class optics, high efficiency light engines and a range of aesthetics to meet the demands of any project. From architect to engineer to installer, our breadth and quality of lighting and controls options provide ideal solutions for a variety of applications, including parking, transit, pedestrian and security in commercial, industrial and residential spaces.



 Click product image for additional information

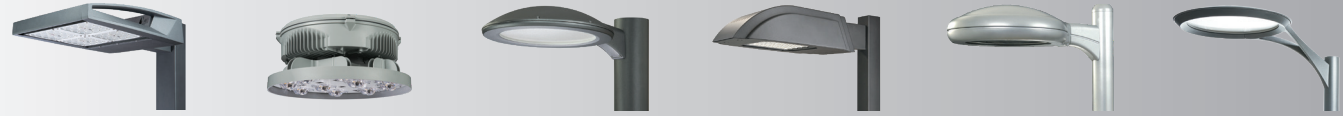


		Caretaker	LAS	Prevail	Prevail Discrete	Navion	Galleon	Galleon II
PRODUCT	Brand	Lumark	Lumark	Lumark	Lumark	Lumark	McGraw-Edison	McGraw-Edison
	Series	CTKR	LAS	PRV & PRV-XL	PRV & PRV-XL	NAV	GLEON	GALN
	Application	C&I	C&I	C&I	C&I	C&I	C&I	C&I
PERFORMANCE / CERTIFICATIONS	LED Type	COB	Discrete	COB	Discrete	Discrete	Discrete	Discrete
	Lumens	4,500 - 9,700	4,900 - 34,000	7,100 - 48,600	7,500 - 41,000	4,700 - 50,000	4,200 - 80,800	3,300 - 73,500
	Lumens Per Watt	156	135	148	148	158	156	159
	Optical Distributions	1	3	4	5	16	16	16
	Mounting Heights	10 - 30'	15 - 40'	15 - 50'	15 - 40'	15 - 40'	10 - 60'	10 - 60'
	Life (L70) @ 25°C	> 220,000 Hrs	> 126,000 Hrs	> 194,000 Hrs	> 416,000 Hrs	> 416,000 Hrs	>851,000 Hrs	>851,000 Hrs
	Replaces	100 - 250W HID	450 - 1,000W HID	150 - 1,000W HID	150 - 1,000W HID	100 - 1,000W HID	100 - 1,500W HID	100 - 1,500W HID
DLC	Premium	Premium	Premium	Premium	Premium	Premium	Premium	
INTEGRATED CONTROLS	Dimming	✓	✓	✓	✓	✓	✓	✓
	Photocontrol	✓	✓	✓	✓	✓	✓	✓
	Occupancy	--	✓	✓	✓	✓	✓	✓
CONNECTED	WaveLinx	--	--	✓	✓	✓	✓	✓
	LumenSafe	--	--	✓	✓	✓	✓	✓

Our outdoor LED lighting solutions for area and site applications combine world-class optics, high efficiency light engines and a range of aesthetics to meet the demands of any project. From architect to engineer to installer, our breadth and quality of lighting and controls options provide ideal solutions for a variety of applications, including parking, transit, pedestrian and security in commercial, industrial and residential spaces.



 Click product image for additional information



		Galleonaire	Celesteon	TopTier	Vision Site	Icon	LuxeScope
PRODUCT	Brand	McGraw-Edison	McGraw-Edison	McGraw-Edison	Invue	Invue	Invue
	Series	GLNA	CTN	TT	VXS / VXM	ICS / ICM	LXS
	Application	C&I	C&I	C&I	C&I	C&I	C&I
PERFORMANCE / CERTIFICATIONS	LED Type	Discrete	COB	Edge-lit	Discrete	Discrete	Edge-lit
	Lumens	3,200 - 68,800	30,000 - 103,000	2,700 - 22,800	2,200 - 16,000	2,100 - 18,000	1,900 - 11,400
	Lumens Per Watt	133	167	146	132	123	115
	Optical Distributions	16	6	5	12	12	4
	Mounting Heights	15 - 55'	50 - 110'	8 - 20'	10 - 30'	10 - 30'	8 - 25'
	Life (L70) @ 25°C	> 416,000 Hrs	> 242,000 Hrs	> 270,000 Hrs	> 425,000 Hrs	> 425,000 Hrs	> 172,000 Hrs
	DLC	Premium	Premium	Premium	Standard	Standard	Premium
INTEGRATED CONTROLS	Dimming	✓	✓	✓	✓	✓	✓
	Photocontrol	✓	✓	✓	✓	✓	✓
	Occupancy	✓	--	✓	✓	✓	✓
CONNECTED	WaveLinx	✓	--	✓	--	--	✓
	LumenSafe	✓	--	--	--	--	--

Offered in traditional shapes reminiscent of early gas-lit lamps, to ultra-modern styling that transforms urban cityscapes, Cooper Lighting Solutions decorative outdoor products integrate cutting-edge LED and controls technologies that span across generations and design languages to truly enhance pedestrian experiences.







							
		Utility LED Acorn	Woodbridge	Breckenridge	Lexington	Traditionaire	Generation Series
PRODUCT	Brand	Streetworks	Streetworks	Streetworks	Streetworks	McGraw-Edison	McGraw-Edison
	Series	ULA	MPW	MPB	LXF / LXT	TRR	GAR / GAT / GLC
	Application	Utility / Infrastructure	Utility / Infrastructure	Utility / Infrastructure	Utility / Infrastructure	C&I	C&I
PERFORMANCE / CERTIFICATIONS	LED Type	Lensed	Lensed	Lensed	Discrete / Lensed	Lensed	Lensed
	Lumens	2,900 - 9,549	1,900 - 6,896	1,900 - 6,504	2,000 - 11,000	5,000	5,778 - 11,060
	Lumens Per Watt	157	114	107	140	90	112
	Optical Distributions	2	2	2	5	2	2
	Life (L70) @ 25°C	> 139,000 Hrs	> 69,000 Hrs	> 69,000 Hrs	> 800,000 Hrs	> 50,000 Hrs	> 210,000 Hrs
	DLC	--	--	--	Standard	--	--
INTEGRATED CONTROLS	Dimming	✓	✓	✓	✓	✓	--
	Photocontrol	✓	✓	✓	✓	✓	✓
	Occupancy	--	--	--	--	--	--
CONNECTED	WaveLinx	--	--	--	--	--	--

 Click product image for additional information

Offered in traditional shapes reminiscent of early gas-lit lamps, to ultra-modern styling that transforms urban cityscapes, Cooper Lighting Solutions' decorative outdoor products integrate cutting-edge LED and controls technologies that span across generations and design languages to truly enhance pedestrian experiences.



					
		Mesa	Epic Medium	Arbor Post Top	LuxeScope
PRODUCT	Brand	Invue	Invue	Invue	Invue
	Series	MSA	ECM / EMM	ARB	LXS
	Application	C&I	C&I	C&I	C&I
PERFORMANCE / CERTIFICATIONS	LED Type	Discrete	Discrete	Edge-Lit	Edge-Lit
	Lumens	3,000 - 29,000	2,300 - 12,200	2,000 - 9,500	1,923 - 10,765
	Lumens Per Watt	108	126	100	108
	Optical Distributions	12	12	4	4
	Life (L70) @ 25°C	> 400,000 Hrs	> 450,000 Hrs	> 230,000 Hrs	> 230,000 Hrs
	DLC	--	Standard	--	--
INTEGRATED CONTROLS	Dimming	✓	✓	✓	✓
	Photocontrol	✓	--	✓	✓
	Occupancy	✓	✓	✓	✓
CONNECTED	WaveLinx	--	--	--	--

 Click product image for additional information

Boasting specification grade performance and architectural styling, these wall-mounted LED fixtures were designed to enhance exteriors, providing much more than award-winning illumination. Visually striking dayforms to low-profile accents, this collection provides pedestrian convenience and security as well as code-compliant egress for a multitude of lighting projects.



		Glass Wall Pack	Crosstour	Axcnt	Wal-Pak	Square Wall Pack	Prevail Petite Wall
PRODUCT	Brand	Lumark	Lumark	Lumark	Lumark	Lumark	Lumark
	Series	WPM	XTOR	AXC	WP	WPSQLED	PRV-P
	Application	C&I	C&I	C&I	C&I	C&I	C&I
PERFORMANCE / CERTIFICATIONS	LED Type	Discrete	COB	Discrete	COB	COB	COB
	Lumens	3,500 - 13,400	1,400 - 13,458	1,800 - 17,300	3,300 - 5,900	7,100 - 11,000	4,800 - 12,200
	Lumens Per Watt	Up to 143	132	144	131	111	146
	Optical Distributions	1	2	2	Glass	Glass	4
	Mounting Heights	15' - 30'	10 - 40'	10 - 40'	10 - 20'	10 - 30'	10 - 30'
	Life (L70) @ 25°C	>143,000 Hrs	> 255,000 Hrs	> 556,000 Hrs	> 340,000 Hrs	> 240,000 Hrs	> 194,000 Hrs
	Emergency Battery	--	✓	✓	✓	--	✓
INTEGRATED CONTROLS	DLC	✓	Premium	Premium	Premium	Standard	Premium
	Dimming	✓	--	✓	✓	--	✓
	Photocontrol	Integral button type PC	✓	✓	✓	✓	✓
CONNECTED	Occupancy	--	✓	✓	--	--	✓
	WaveLinx	--	--	✓	--	--	✓

Click product image for additional information



# Wall Mount

# Lumark | McGraw-Edison | Invue

Boasting specification grade performance and architectural styling, these wall-mounted LED fixtures were designed to enhance exteriors, providing much more than award-winning illumination. Visually striking dayforms to low-profile accents, this collection provides pedestrian convenience and security as well as code-compliant egress for a multitude of lighting projects.



 Click product image for additional information



		Prevail Petite Discrete Wall	Galleon Wall Companion	Impact Elite	TopTier	Entri Series	ClearCurve	Arbor Wall Sconce
PRODUCT	Brand	Lumark	McGraw-Edison	McGraw-Edison	McGraw-Edison	Invue	Invue	Invue
	Series	PRV-P	GWC	ISC / ISS / IST / ISW	TT	ENT / ENC / ENV	CCW	ABW
	Application	C&I	C&I	C&I	C&I	C&I	C&I	C&I
PERFORMANCE / CERTIFICATIONS	LED Type	Discrete	Discrete	Discrete	Edge-lit	Discrete	Edge-lit / Discrete	Edge-lit
	Lumens	4,300 - 11,300	3,200 - 17,000	2,400 - 8,100	3,000 - 13,300	400 - 9,800	1,600 - 12,000	500 - 880
	Lumens Per Watt	147	154	143	146	136	149	45
	Optical Distributions	5	13	10	5	5	10	2
	Mounting Heights	10 - 30'	10 - 30'	8 - 20'	8 - 20'	8 - 20'	8' - 20'	8 - 10'
	Life (L70) @ 25°C	> 663,000 Hrs	> 851,000 Hrs	> 851,000 Hrs	> 270,000 Hrs	> 2.4M Hrs	> 199,000 Hrs	> 250,000 Hrs
	Emergency Battery	✓	✓	✓	✓	✓	✓	--
DLC	Premium	Premium	Premium	Premium	Standard	Premium	--	
INTEGRATED CONTROLS	Dimming	✓	✓	✓	✓	--	✓	✓
	Photocontrol	✓	✓	✓	✓	✓	✓	✓
	Occupancy	✓	✓	✓	✓	✓	✓	✓
CONNECTED	WaveLinx	✓	✓	✓	✓	--	✓	--

# Parking Garage and Canopy

# Lumark | McGraw-Edison

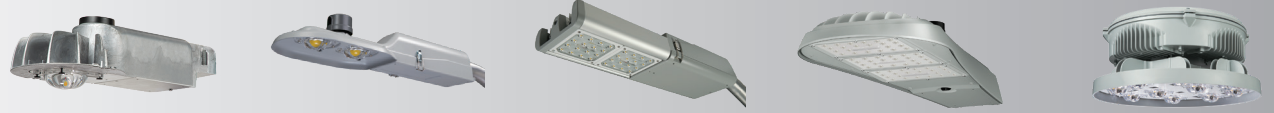
Parking garages, banks, gas stations, educational and healthcare facilities require reliable, efficient lighting solutions for covered spaces with a wide range of performance and configurability. Cooper Lighting Solutions' parking garage and canopy solutions provide superior coverage and flexibility, available with controls and visual comfort optic distributions for even the most discerning lighting professional.



		Canopy	RPGC	TopTier	Concise	Recessed Canopy
PRODUCT	Brand	Lumark	Lumark	McGraw-Edison	McGraw-Edison	McGraw-Edison
	Series	CLCSLED	RPGC	TT	CNC	LRC
	Application	C&I	C&I	C&I	C&I	C&I
PERFORMANCE / CERTIFICATIONS	LED Type	Lensed	Lensed	Edge-lit	Discrete	Discrete
	Lumens	4,700 - 13,900	3,700 - 7,800	2,700 - 22,800	2,224 - 12,431	2,987 - 8,212
	Lumens Per Watt	132	125	146	128	99
	Distributions	--	--	5	9	3
	Voltages	120-277, 347	120-277, 347	120-277, 347, 480	120-277, 347, 480	120-277, 347, 480
	Mounting Heights	--	--	8 - 20'	8 - 30'	8 - 20'
	Life (L70) @ 25°C	> 346,000 Hrs	> 159,000 Hrs	> 270,000 Hrs	> 450,000 Hrs	> 350,000 Hrs
	Emergency Battery	--	--	✓	✓	--
	DLC	✓	✓	✓	--	--
INTEGRATED CONTROLS	Dimming	--	✓	✓	✓	--
	Photocontrol	✓	--	✓	✓	--
	Occupancy	--	✓	✓	✓	--
CONNECTED	WaveLinx	--	✓	✓	--	--

Click product image for additional information

Meeting increasing demands of energy efficiency, project expenditures and maintenance costs, Cooper Lighting roadway solutions provide best-in-class optical performance, generating superior pole spacing, uniformity, coverage and spill light control. Combined with controls and enhanced security options, Cooper Lighting Solutions' Streetworks portfolio represents the best value for street and roadway applications.



		Caretaker	Verdeon	Navion	Archeon	Celesteon
PRODUCT	Brand	Streetworks	Streetworks	Streetworks	Streetworks	Streetworks
	Series	CRTK2	VERD	NVN	ARCH	CST
	Application	Roadway	Roadway	Roadway	Roadway	Roadway
PERFORMANCE / CERTIFICATIONS	LED Type	COB	COB	Discrete	Discrete	COB
	Lumens	3,200-12,100	2,600 - 38,000	4,225 - 50,000	2,000 - 37,000	30,000 - 113,000
	Lumens Per Watt	154	161	158	178	175
	Optical Distributions	3	5	16	6	7
	Mounting Heights	10 - 20'	15 - 40'	15 - 40'	15 - 40'	40 - 100'
	Life (L70) @ 25°C	@25°C >110,000/>66,000 Hrs	> 151,000 Hrs	> 416,000 Hrs	> 800,000	242,000 Hrs
	Surge Protection	✓	✓	✓	✓	✓
	3G Certification	✓	✓	✓	✓	✓
	DLC	✓	✓	✓	✓	--
	UL	✓	✓	✓	✓	✓
INTEGRATED CONTROLS	Dimming	✓	✓	✓	✓	✓
	DALI	✓	✓	✓	✓	✓
	Photocontrol	✓	✓	✓	✓	✓
	Occupancy	✓	--	✓	✓	--
CONNECTED	LumenSafe	--	--	✓	✓	--

 Click product image for additional information

Our outdoor LED lighting solutions for pathway applications provide architectural style while delivering exceptional optical performance. Visual comfort is particularly important for pathway applications and our bollards enhance the surroundings through beautiful management of glare for improved visibility.



					
		BRT6	Eon	ClearPath Bollard	Arbor Bollard
PRODUCT	Brand	McGraw-Edison	Lumiere	Invue	Invue
	Series	BRT6	Eon 303	CPB	ABB
	Application	C&I	C&I	C&I	C&I
PERFORMANCE / CERTIFICATIONS	LED Type	Discrete	Discrete	Edge-lit	Edge-lit
	Lumens	560 - 4,400	560 - 2,700	450 - 700	500 - 1,300
	Lumens Per Watt	up to 122	up to 92	30	45
	Optical Distributions	4	3	3	2
	Heights	30", 36", 42"	12", 24", 36", 42"	42"	32", 36", 42"
	Life (L70) @ 25°C	270,000 Hrs	365,000 Hrs	245,000 Hrs	350,000 Hrs
	DLC	--	--	--	--
INTEGRATED CONTROLS	Dimming	✓	✓	✓	✓
	Photocontrol	✓	✓	--	--
	Occupancy	✓	--	--	--
CONNECTED	WaveLinx	--	--	--	--

 Click product image for additional information

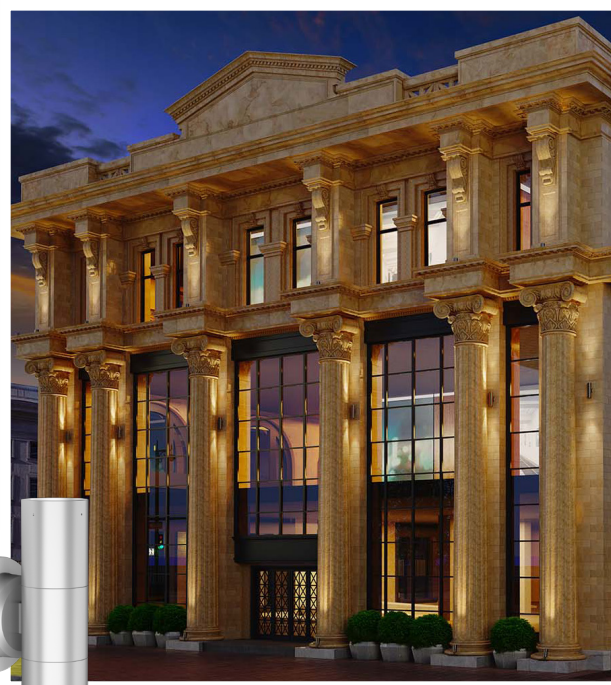
# Distinctive Environmental Lighting

Lumière brings cutting-edge, feature packed accent lighting that will dramatically showcase any architectural feature, inside or out.



## Landscape

Fine-tune your lights to create dramatic lighting effects.



## Architectural

Add beauty, character and focus to modern or traditional structures.



## Pathway & Signs

Redefining the nature of architectural outdoor lighting.

# Lighting controls

Lighting the way for connected communities. Smart, connected technologies mean safer, more efficient communities – and it starts with connected lighting. Our solutions put full system control and optimization at your fingertips, helping you rise to the challenges of today and tomorrow.

The product selection guides are simple yet powerful tools to help assist with product comparison and selection based on features, performance and value.

- 15 Lighting Controls
- 16 WaveLinx
- 18 LumenSafe (Lighting and Surveillance Solution)



Stand-alone

Connected

Controlled

System	Stand-alone Photocontrols	Stand-alone Sensors	WaveLinX Outdoor Lighting Control Module		WaveLinX Lite	WaveLinX Pro		
	BPC, PR, or PR7	MS or SPB	WOLC	WOLC + WAC	ZW-WO or ZD-WO	Sensor only	Sensor + WAC	Sensor + WAC
						ZW-SWPD or ZD-SWPD	ZW-SWPD + WAC	ZD-SWPD + WAC
<b>Stand-alone or Networked</b>	Stand-alone	Stand-alone	Stand-alone	Networked	Stand-alone	Stand-alone	Networked	Networked
<b>Addressable Protocol</b>	--	Remote control or Mobile application	--	Wireless network	Mobile application	--	Wireless network	Wireless network
<b>Features</b>								
<i>Motion sensing</i>	--	✓	--	--	✓	✓	✓	✓
<i>Dusk-to-dawn / Photosensing</i>	✓	✓	✓	✓	✓	✓	✓	✓
<i>Adjust output levels (max and standby)</i>	--	✓	--	✓	✓	--	✓	✓
<i>Zone control</i>	--	--	--	✓	✓	--	✓	✓
<i>Group programming</i>	--	--	--	✓	✓	--	✓	✓
<i>Scheduling</i>	--	--	--	✓	--	--	✓	✓
<i>Energy Measurement (through Trellix)</i>	--	--	-	--	--	--	--	✓
<b>Integrations and Value-Add Services</b>								
<i>BMS integration</i>	--	--	--	✓	--	--	✓	✓
<i>API integration</i>	--	--	--	✓	--	--	✓	✓
<i>Facility management &amp; tools</i>	--	--	--	✓	--	--	✓	✓

\*WAC=Wireless Area Controller gateway

## WaveLinx Outdoor Lighting Control Module

The WaveLinx Outdoor Lighting Control (WOLC) Module extends the WaveLinx System's controls capability to a building's surroundings or site such as parking lots and short pathways. The WOLC Module is individually addressable and installs on top of a light pole via an ANSI 136.41-compliant, 7-pin twist-lock connector.



## WaveLinx Lite

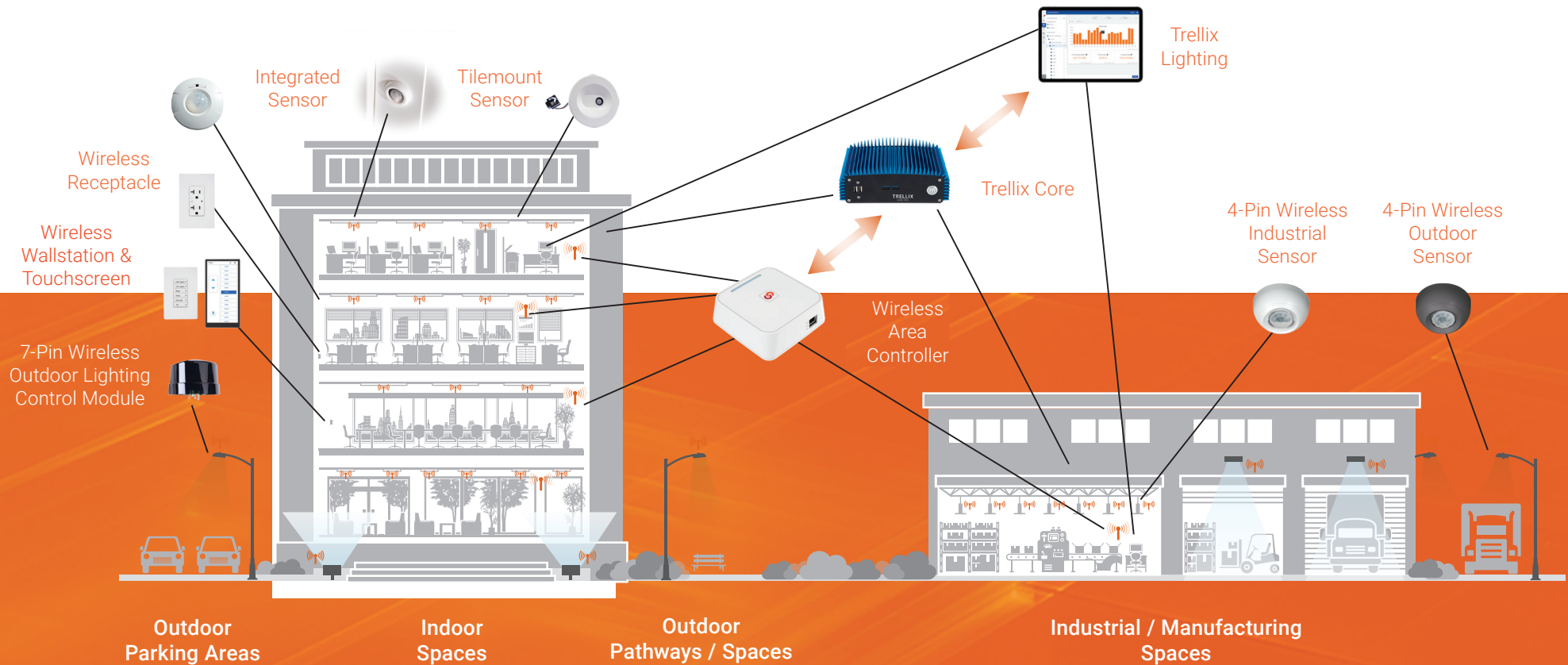
The outdoor sensors offer passive infrared (PIR) occupancy and a photocell for daylight sensing for installation heights up to 40 feet. The sensor operates on Bluetooth® 4.2 mesh network and offer simple tool-less integration into WaveLinx Lite outdoor light fixtures equipped with the 4-pin Zhaga Book 18 compliant socket. The mobile application allows you to map the sensor to any area or control zone, select occupancy or vacancy, occupied and unoccupied light levels and set the hold time.





## WaveLinx Pro

Create a smart building ecosystem with convenient, out-of-the-box functionality. The Wireless Area Controller is the main component of the WaveLinx Pro wireless connected lighting system, coordinating between the WaveLinx Pro mobile app and your WaveLinx Pro enabled fixtures and devices. It's remarkably simple to set up and program (without the need for an IT network). Patent-pending code commissioning features also reduce commissioning times by 40%.



## All-in-one lighting & surveillance solution This changes everything

Lighting can provide the backbone for safer communities and cities through smarter surveillance and enhanced data. Cooper Lighting Solutions's camera-integrated luminaires are an easy win for you and your customers.

### \$ 30% Lower install cost

Reduce install cost by up to 30%.



### Flexible integration

LumenSafe is compatible with virtually any video management system or security platform.



### All-in-one solution

Easy installation with our all-in-one LumenSafe solution. Integrated camera and networking equipment means no additional wiring is needed beyond providing line power to the luminaire.



### Remote monitoring

Protect valuable goods and inventory from theft or vandalism remotely. Axis Communications cameras provide users with crystal clear high-quality images.

## Safe communities & cities start here



LED  
light fixtures



Integrated  
video camera



Flexible backhaul  
options  
(Cellular, Wi-Fi, Ethernet)



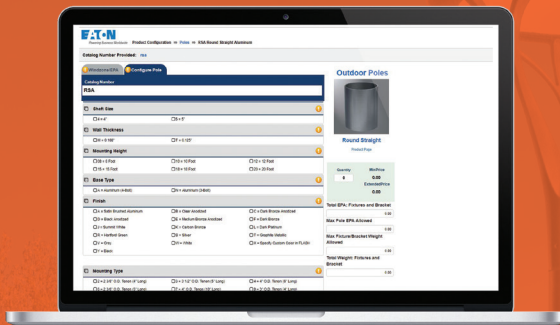
Software  
services



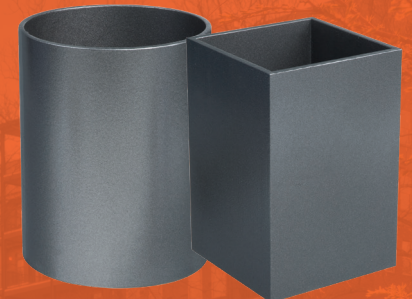
LumenSafe  
simplified  
integration

## Take the guesswork out of the equation, for faster order processing and an all-around smooth process

We're among the select few American lighting companies who manufacture poles in-house. This allows for superior quality control and expertly-tailored end products that meet market needs. Our online pole configurator tool can help you select the poles that are right for your project.



[Click here for Online Pole Configurator](#)



### Lighting Product Lines

Ametrix  
AtLite  
Corelite  
Ephesus  
Fail-Safe  
Halo  
Halo Commercial  
Invue  
io  
Iris  
Lumark  
Lumière  
McGraw-Edison  
Metalux  
MWS  
Neo-Ray  
Portfolio  
RSA  
Shaper  
Streetworks  
Sure-Lites

### Controls Product Lines

Greengate

### Connected Lighting Systems

Fifth Light (Canada Only)  
HALO Home  
WaveLinx

### IoT Platform

Trellix



## Connected Communities LED Product Selection Guide



**Cooper Lighting Solutions**  
1121 Highway 74 South  
Peachtree City, GA 30269  
P: 770-486-4800  
[www.cooperlighting.com](http://www.cooperlighting.com)

© 2022 Cooper Lighting Solutions  
All Rights Reserved  
Publication No. BR525100EN  
March 2022

Cooper Lighting Solutions is a registered trademark.

All other trademarks are property of their respective owners.

Product availability, specifications, and compliances are subject to change without notice.