

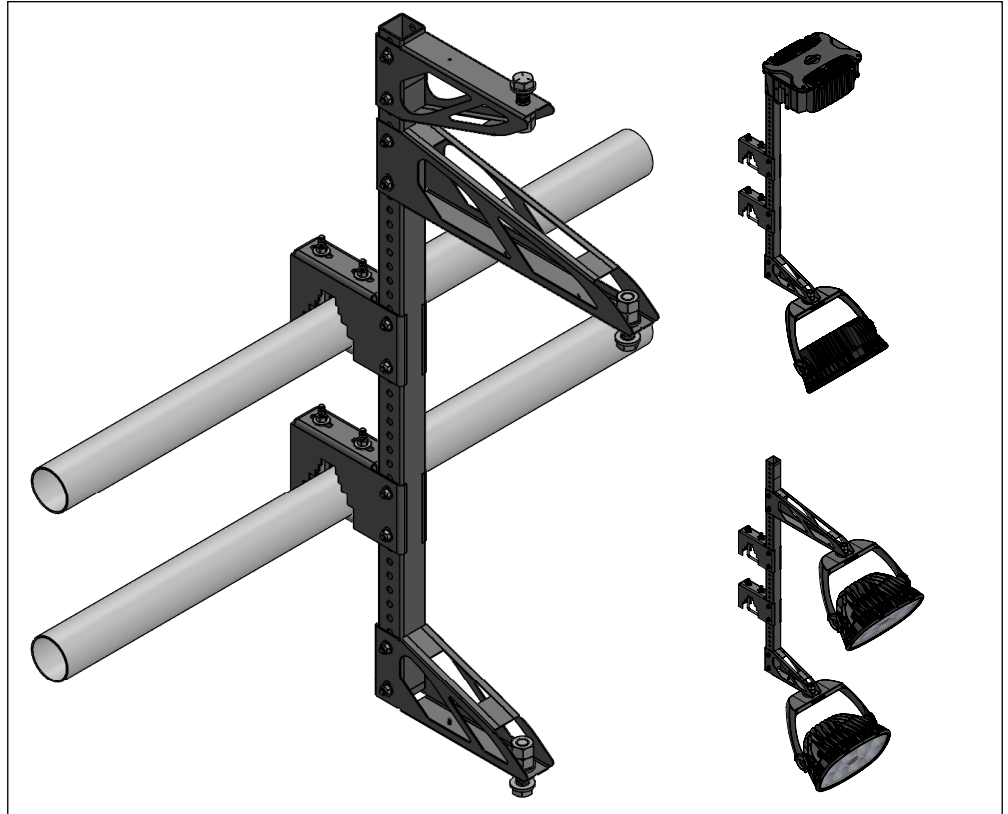


CATWALK BRACKET

Installation Manual

COMPATIBLE LUMINAIRES:

- › [LUMASPORT 8 - INTEGRAL](#)
- › [LUMASPORT 8 - LOCAL](#)
- › [LUMASPORT 8 - REMOTE](#)
- › [LUMASPORT 8 PRISM - LOCAL](#)
- › [LUMASPORT 8 PRISM - REMOTE](#)
- › [LUMAVISION](#)
- › [LUMADAPT 8](#)



Before You Begin

Read and understand this entire manual and any additional site-specific installation documents before attempting to assemble, install, or operate the Catwalk Bracket. If you have any questions regarding the product or installation, contact Cooper Lighting Customer Service at 1-800-573-3600.

Safety

Follow all safety items outlined here as well as any local safety procedures.

1. Verify the structural capacity and safety of all facility/venue supports and mounting apparatus before installation. See Catwalk Bracket specification sheet for weight and wind loading data.
2. In harsh settings where the system is subjected to factors such as extreme temperatures, high corrosion, hurricanes, or lightning, always follow local codes and additional protocols to ensure the system components can withstand the environmental stress for the life of the system.
3. DO NOT make or alter any open holes in the Catwalk Bracket. Do not modify the Catwalk Bracket or luminaire mounting features. Modifying the luminaire or bracket will void the warranty.
4. Use Personal Protective Equipment including hardhats, safety glasses, reflective vests, electrical safety gloves, fall protection equipment, and safety toe boots during installation, operation, and maintenance of luminaire.
5. Verify compliance with local standards to prevent access to the area below where installation activities are occurring to prevent injury from accidental drops of luminaires, tools or hardware.



Risk of Cuts or other Casualty Hazards - Installation and maintenance of this product must be performed by a qualified electrician. This product must be installed in accordance with the applicable installation code by a person familiar with the construction and operation of the product and hazards involved.



Risk of Burn - Disconnect power and allow luminaire to cool before handling or servicing.



Risk of Personal Injury - Luminaire may become damaged and/or unstable if not installed properly.

DISCLAIMER OF LIABILITY: Cooper Lighting Solutions assumes no liability for damages or losses of any kind that may arise from the improper, careless, or negligent installation, handling or use of this product.

ATTENTION Receiving Department: Note the actual Catwalk Bracket description of any shortage or noticeable damage on delivery receipt. File claim for common carrier (LTL) directly with carrier. Claims for concealed damage must be filed within 15 days of delivery. All damaged material; complete with original packing must be retained.

APPLICATIONS: The Catwalk Bracket should not be used in area of limited ventilation or inside high ambient temperature enclosures. It must be stored in a dry location before installation. Do not expose Catwalk Bracket to rain, dust or other environmental conditions prior to installation. Best results will be obtained if installed and maintained according to the following recommendations.



CATWALK BRACKET SPECIFICATION SHEET URL:
<https://www.cooperlighting.com/content/dam/cooper-lighting/brands/ephesus/spec-sheets/ephesus-catwalk-bracket-data-specsheet.pdf>

Failure to confirm proper configuration may result in injury or luminaire damage.



Mounting Accessories

Catwalk Bracket

Catwalk bracket is intended to be used for mounting luminaires to two square or round indoor railings roughly 12in-22in apart luminaires or mounting applications.

WARNING

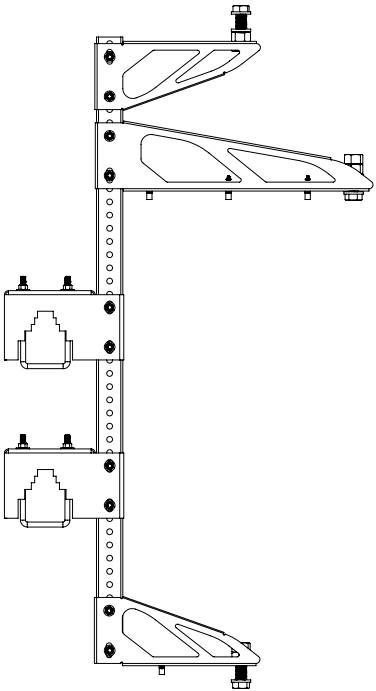


Catwalk Bracket may ONLY be installed in the following physical orientations. Not to be used in exterior locations or natatorium applications. If this is required, please contact Ephesus for additional mounting options. Failure to install the Catwalk Bracket in approved orientation or location may result in damage, injury, or death. (Reference diagram CW4a and CW4b)



Prevent access to area under Catwalk Bracket until the final torquing is complete.

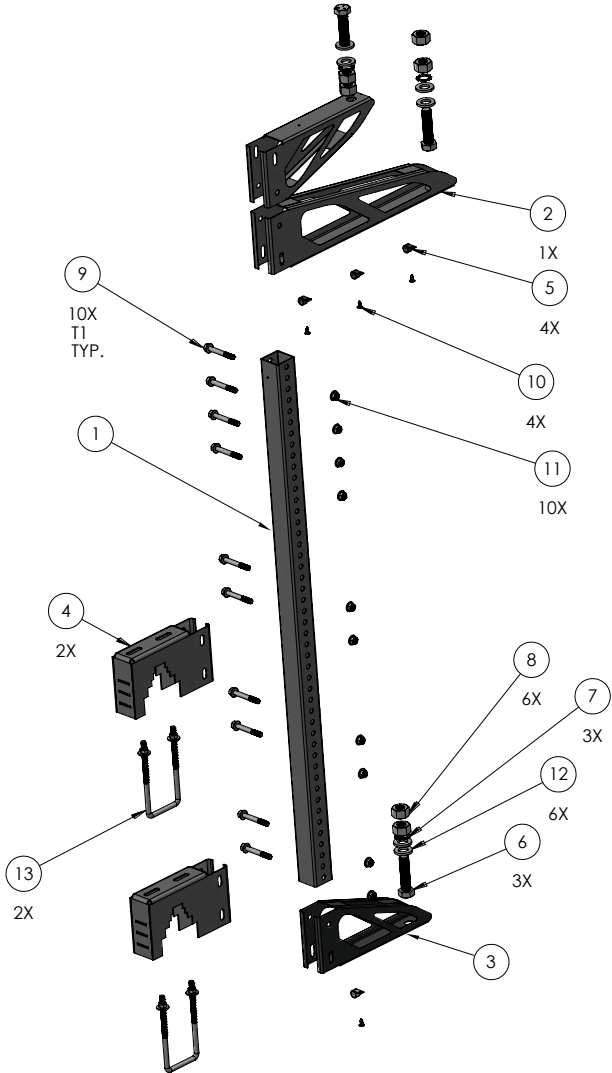
CW1 Catwalk Bracket



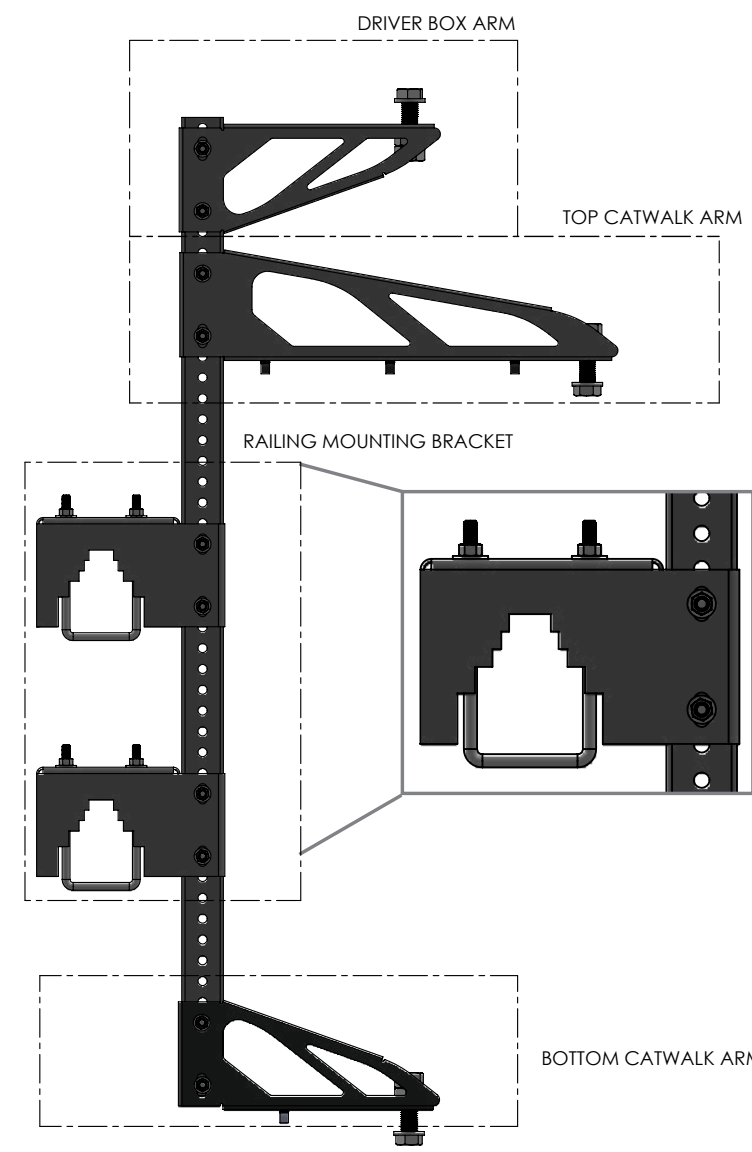
CW2 Catwalk Bracket Parts Diagram¹

Item #	Description	Quantity
1	VERTICAL SUPPORT	1
2	TOP CATWALK ARM	1
3	BOTTOM CATWALK ARM	2
4	UNIVERSAL RAILING MOUNT	2
5	CABLE HOLDER	4
6	HEX BOLT, 3/4-10 X 3.00, FULL THREAD	3
7	EXT TH LK WASHER, 3/4	3
8	HEX NUT, 3/4-10	6
9	FLANGE BOLT, 3/8-16 X 2.75	10
10	PUSH RIVET, .03-.33 THICK	4
11	FLANGE LOCKNUT, 3/8-16	10
12	WASHER, 3/4	6
13	3in SQ U-BOLT X 6.25, ZN PLTD	2

¹Parts Listed for the **EPH-LS-CAT-P-2-U-B** configuration



Catwalk Bracket (CAT) Mounting Bracket and Arm Diagram



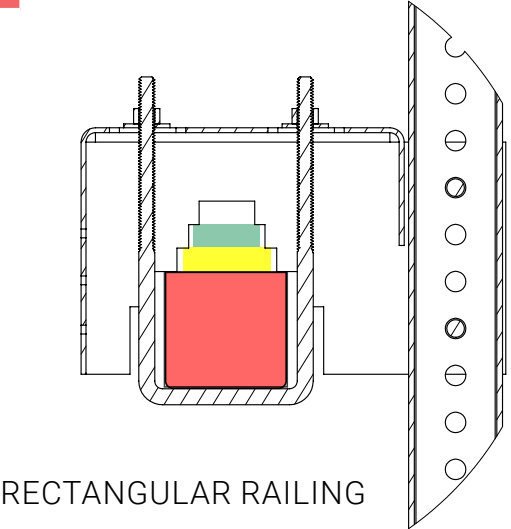
Additional Mounting Fastener Hardware Kits

Hardware Description	Use / Location	Tools
RAILING MOUNTING BRACKET	Used to attach the Catwalk Bracket to two square or round indoor railings roughly 12in-22in apart.	<ul style="list-style-type: none">• 1 1/8in socket• Torque wrench• Crescent or adjustable wrench• 9/16in socket
DRIVER BOX ARM	Used to attach system driver boxes to the Catwalk Bracket.	
TOP CATWALK ARM	Used to attach a Luminaire to the Catwalk Bracket.	
BOTTOM CATWALK ARM	Used to attach a Luminaire to the Catwalk Bracket.	

Railing Mount Range

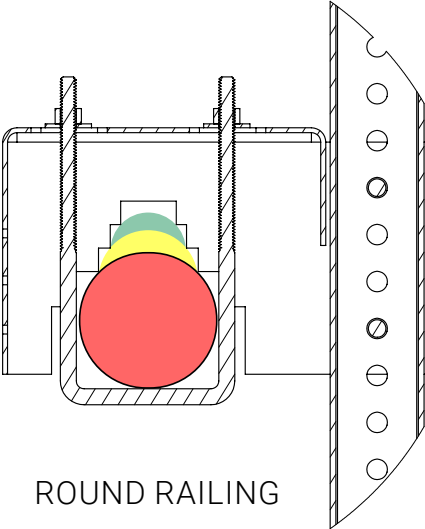
Rectangular Clamping Range Key (inches)

- = 1.5in x 1.5in
- = 2in x 2in
- = 3in x 3in



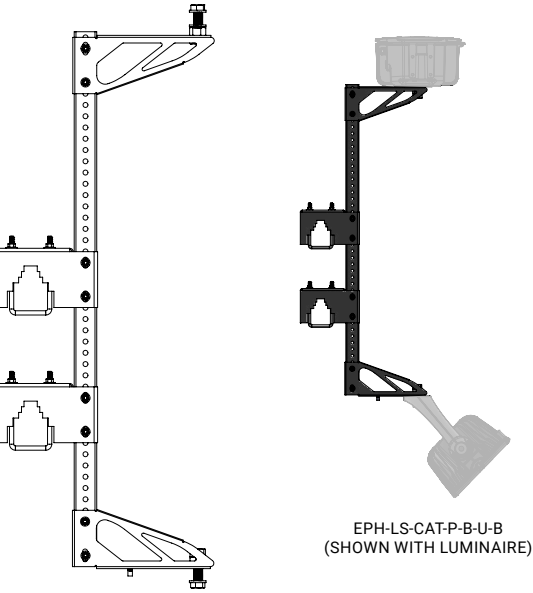
Round Clamping Range Key (inches)

- = Ø 1.5in
- = Ø 2in
- = Ø 3in

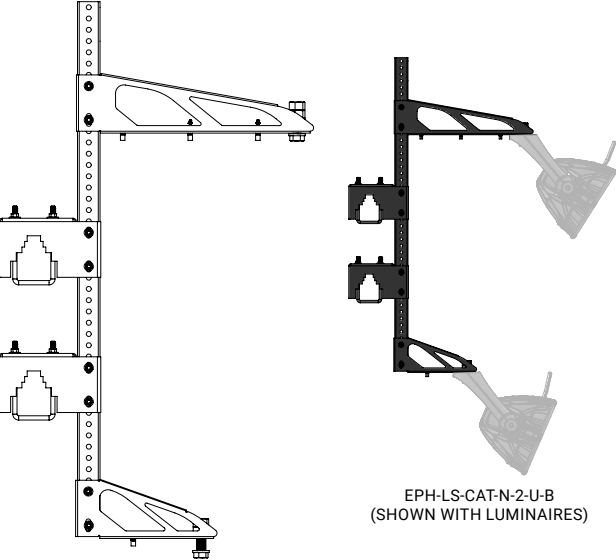


Standard Catwalk Bracket Configurations

EPH-LS-CAT-P-B-U-B



EPH-LS-CAT-N-2-U-B





Application Notes

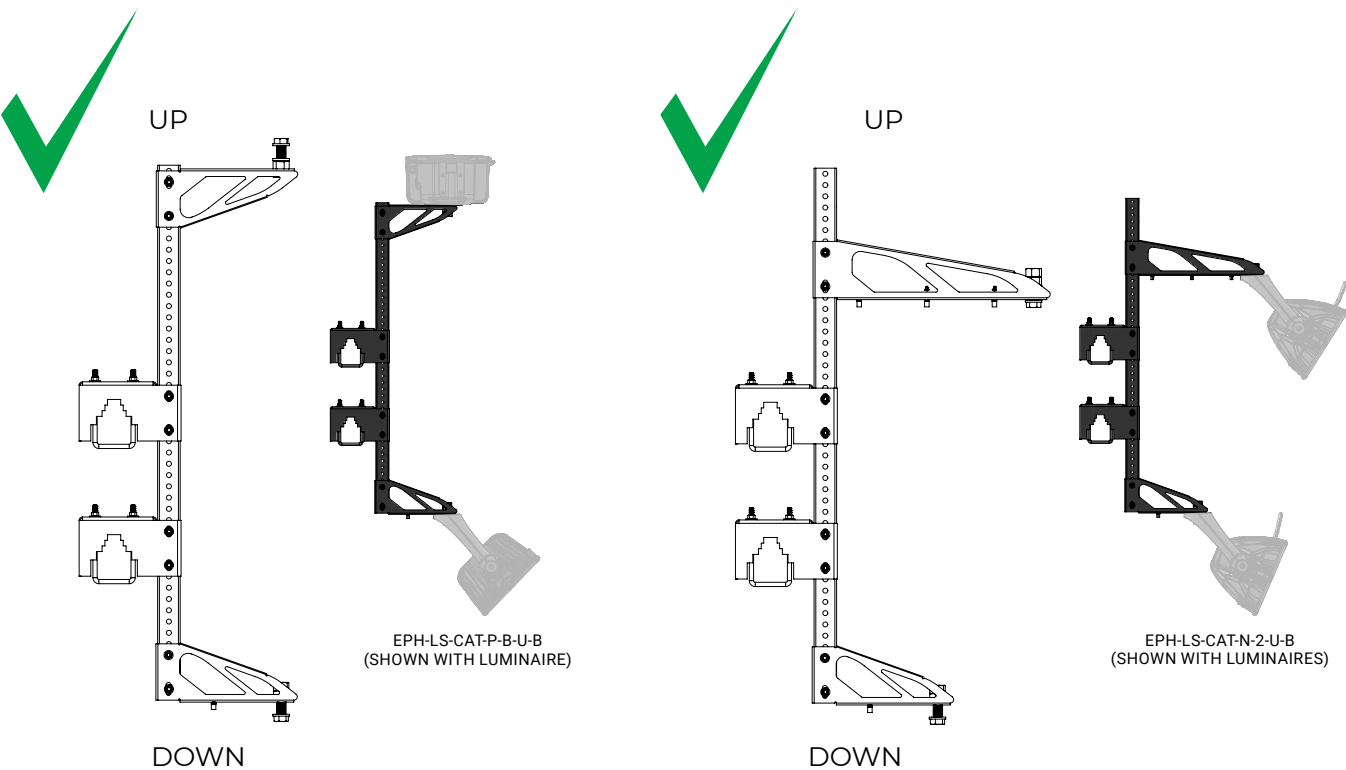
- Configuration with power box may be top heavy.
- Contact must be made with railing mount step corners and both railings
- Bracket always installed and used with two railings. NEVER with a single railing
- Railing Mount Bracket shall only be used upright orientation as shown. Never upside-down or horizontal / sideways
- Safe practices must be used if mounting luminaires after bracket is mounted on railing
- Install luminaire to Catwalk Bracket in accordance with luminaire installation manual.



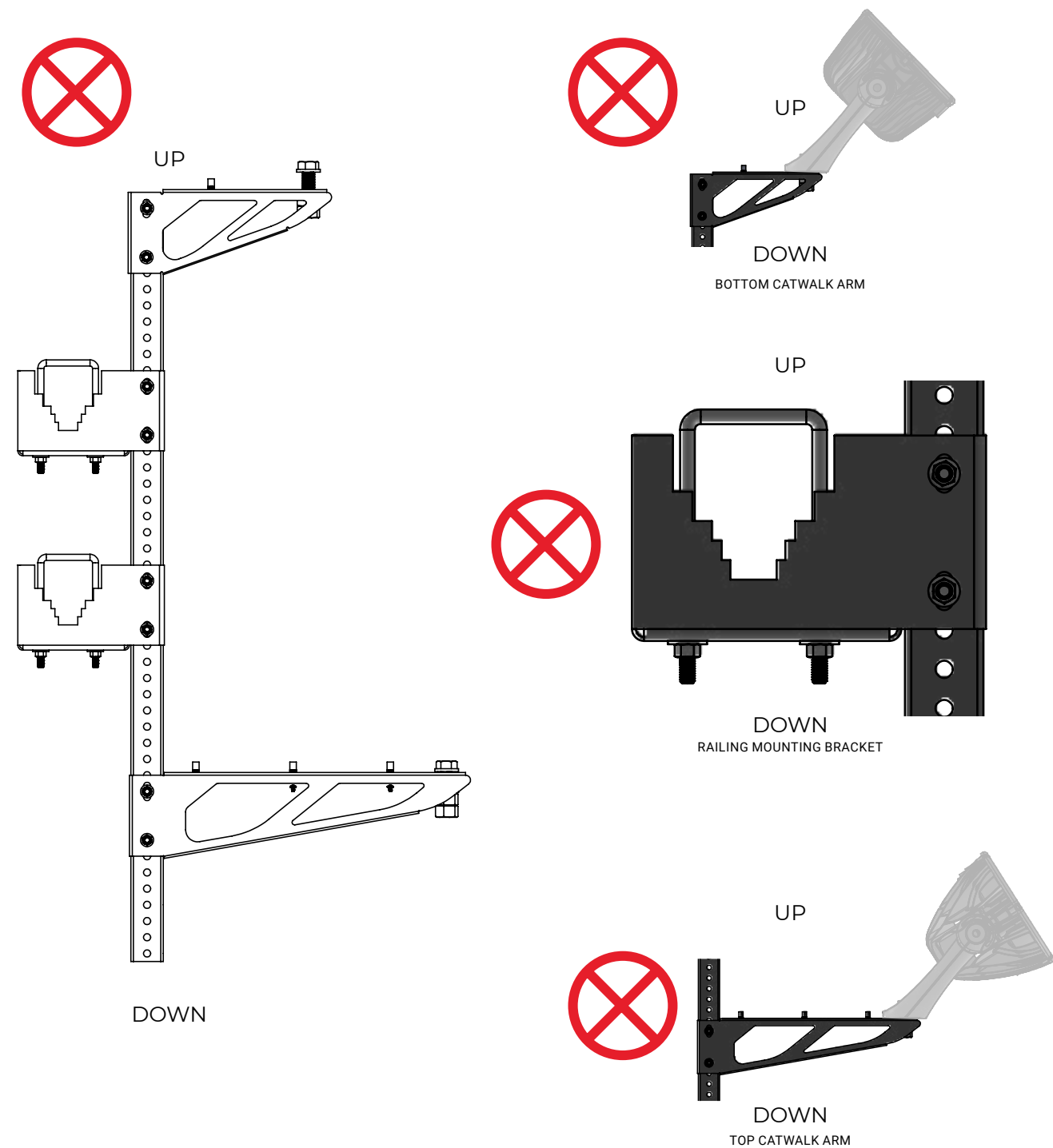
Steps to Install

1. Always follow all applicable laws, regulations, and safety procedures before beginning.
2. Locate railing mount brackets to appropriate distance apart for railing
3. Torque 3/8in Railing and Arm clamping bolts: 96 in lbs.
4. Mount Fixture to top, bottom, or top and bottom catwalk arms using 3/4in bolts, washers, and nuts as shown
5. Aim luminaires to correct area on the field
6. Torque 3/4in fixture bolts: 65ft-lb.
7. **Optional:** Mount power box to power box bracket if provided using 3/4in bolts, washers, and nuts
 - a. Torque 3/4in Power Box bolts: 65ft-lb.
8. Hang assembled bracket with luminaires over railing and hold in place
9. Attach railing to railing mount with U-bolt as shown
10. Torque 3/8in U-bolt: 96 in lbs. Check torque on both nuts of each U-bolt

CW4a Correct Installation



CW4b Incorrect Installation



WARRANTY CLAIM WEB FORM

EphesusWarranty@Signify.com | 315-579-2873

Warranties and Limitation of Liability

Please refer to www.cooperlighting.com/legal for our terms and conditions.