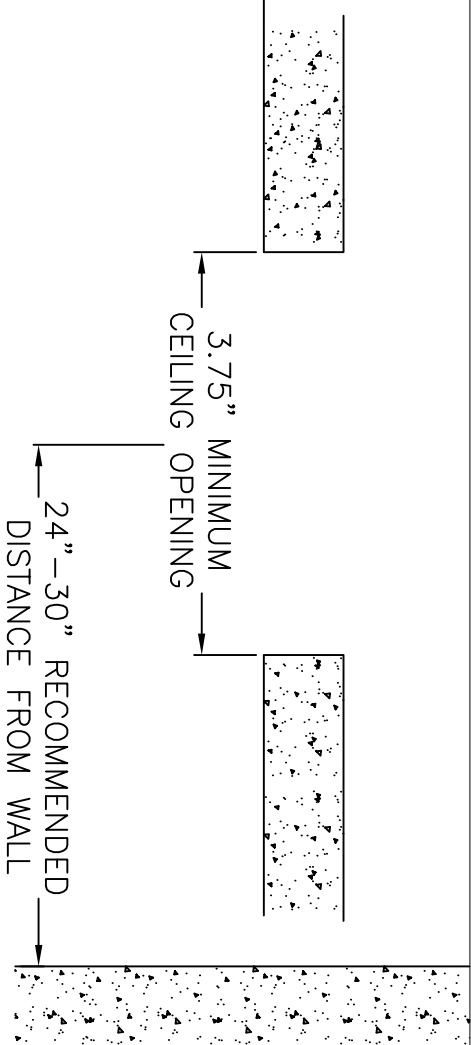
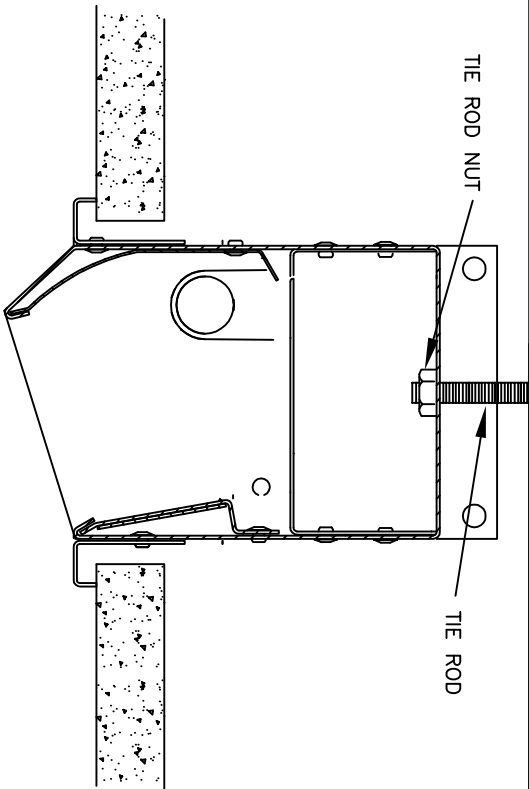


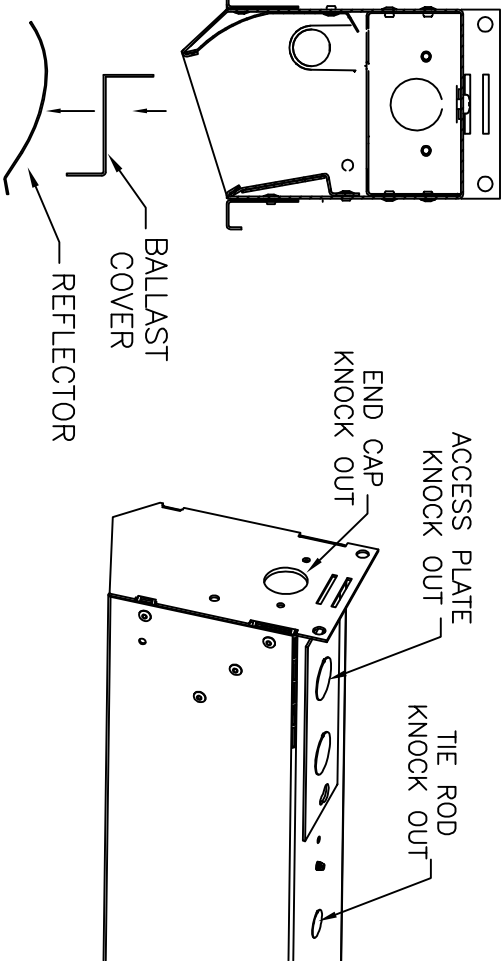
S23XR/1T5 SR CEILING INSTALLATION INSTRUCTIONS



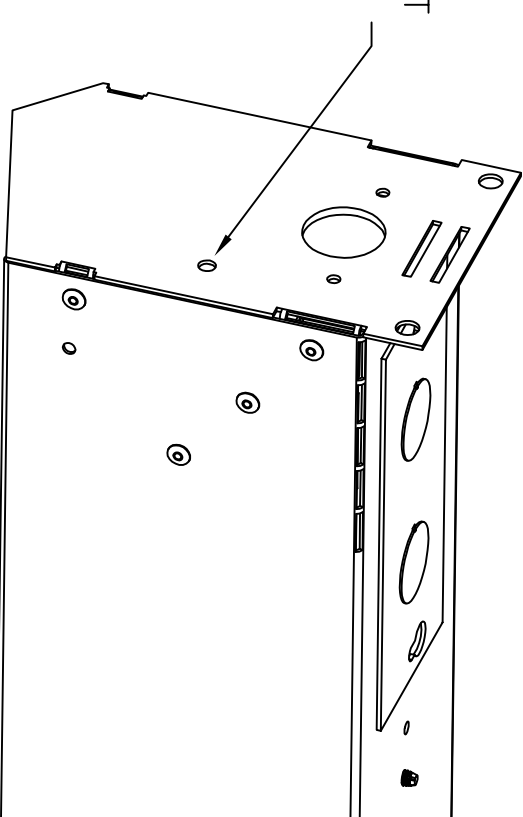
STEP 1: CREATE CEILING OPENING IN SHEETROCK. REFER TO JOB CUT SHEET FOR LENGTH OF OPENING. SECURE TIE RODS AT APPROPRIATE LOCATIONS RELATIVE TO CEILING OPENING (SEE CUT SHEET).



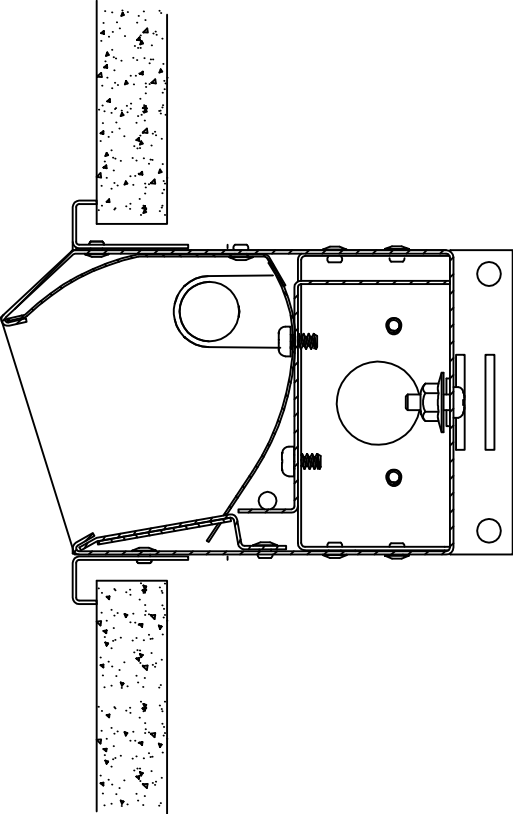
STEP 3: INSTALL FIXTURE SECTIONS (ONE AT A TIME) INTO THE CEILING FROM BELOW. PUSH THE RODS THROUGH REMOVED KNOCK OUTS. INSTALL THE ROD NUT AND TIGHTEN UNTIL THE TOP OF THE SHEETROCK FLANGES CONTACTS THE SURFACE OF THE CEILING. PULL FEED WIRE(S) THROUGH REMOVED FEED KNOCK OUT(S).



STEP 2: REMOVE RELECTORS AND BALLAST COVERS FROM ALL FIXTURES. FOR RUNS, REMOVE KNOCK OUTS ON ENDCAPS FOR THROUGH WIRING PURPOSES (WHERE APPLICABLE). REMOVE ALL TIE ROD KNOCK OUTS ON HOUSINGS. REMOVE ACCESS PLATE KNOCK OUT(S) TO BE USED FOR FEEDS.



STEP 4: (FOR RUNS ONLY) JOIN ADJACENT FIXTURES USING HOLES IN END CAPS



REVISIONS	
DATE	
B	
A	

THIS DOCUMENT IS THE CONFIDENTIAL AND PROPRIETARY PROPERTY OF NEO-RAY AND MAY NOT BE USED OR REPRODUCED NOR ITS CONTENTS DIVULGED WITHOUT NEORAY'S CONSENT OR KNOWLEDGE.

neoray

100 Andrews Road., Hicksville, N.Y. 11801
TEL: 516-470-1000 FAX: 516-470-1077

COOPER
Lighting solutions
www.cooperlighting.com

INSTRUCTIONS FOR SERIES
SERIES 23XR/1T5
SHEETROCK (SR)

DRAWN BY	APPROVED	INSTALLATION INSTRUCTIONS SHEET 3 OF 3
JH		
DATE	SCALE	
4/13/09	NONE	