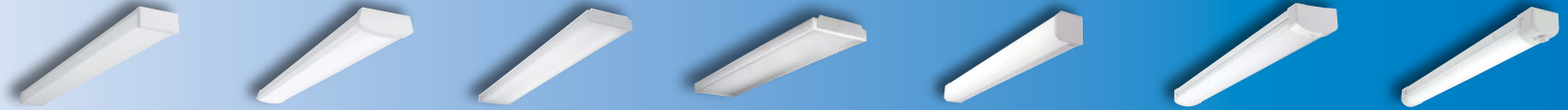


Good

Better

Best

Click on products to learn more



		WP	NWS	WNLED	WSNLED	BCLED	AWS / AWWS	SWLED
APPLICABILITY ¹	Education	★★	★★★	★★★	★★	★★	★★★	★★★
	Office	★	★★	★★	★★★	★	★★★	★★★
	Healthcare	★	★	★	★★	★★	★★	★
	Retail	★	★★	★	★★★	★	★★★	★
	Industrial	★	★★	★★			★	★★
	Residential	★★★		★	★	★	★★	
FEATURES / PERFORMANCE	Sizes	2' and 4', 5.1" wide	2', 4' / 5.3" wide	2', 4'	2', 4'	2', 4'	2', 4', 8' / 5.5" & 10" Wide	4'
	lm/W (Max)	114	129	118	108	120	165	150
	Lum (Max)	3,400	4,900	5,000	6,500	4,800	13,000	8,000
	Life (@60K)	L70/50K	L82	L88	L87	L82	L90	L91
	Lens	Prismatic Acrylic	Diffuse, Acrylic	Frost, Acrylic	Frost + Film, Acrylic	Frost, Smooth	(Vandal Resistant) Ribbed Frost, Polycarb	(Vandal Resistant) Frost, Acrylic
	Emergency	No	Remote	Integrated	Integrated	Integrated	Integrated	Integrated
	CRI	80+	80+	80+	80+	80+	80+, 90+	80+
	Row Mount	N/A	Yes	Yes	Yes	Yes	Yes	No
	Sensor Location	N/A	Integral, Microwave	N/A	N/A	N/A	Integrated	Integrated
	DLC	Standard	DLC, Title 24 Non-Res	Standard	Standard	None	DLC, Title 24 Res	Standard
Lumen / CCT Select		CCT/Lumen				CCT/Lumen		
INTEGRATED CONTROLS	Basic Occupancy		✓				✓	✓
	Stand Alone Daylight / Occupancy						✓	✓
	WaveLinx Lite						✓	✓
	WaveLinx						✓	✓
	DLVP							

Notes: 1. ★★★ = high applicability, ★★ = medium applicability, ★ = low applicability, blank = non-applicable