

EBPLEDL7W/EBPLEDL14W Battery Pack



Product Feature	Customer Benefit
Field installable	Meet emergency code with no aesthetic impact
Satisfies all wiring configurations as conduit and test button are included	Design ease; less SKU's to stock
7 watt or 14 watt output creates 600 to 2500 lumens in emergency mode	Design flexibility; superior egress coverage
Updated battery disconnect	Prevents unwanted battery discharge during construction
No-maintenance, long-life LiFePO ₄ battery	Peace of mind

Certification / Warranty
UL 924 Classified for field installation
NFPA/NEC/OSHA/CEC code compliant
Guaranteed compatibility w/Cooper Lighting Solutions Fixtures
5-year product warranty

APX/APX7H Thermoplastic Exit



Product Feature	Customer Benefit
LED source with nickel cadmium battery	Up to 10 years with no maintenance
Now with red/green field selectable faces	Design flexibility
Universal mount; single or double sided	Design flexibility
Optional remote capacity to drive 2 LED heads (H version)	Design flexibility; labor and material savings

Certification / Warranty
UL 924 damp location listed
NFPA/NEC/OSHA/CEC code compliant
5-year product warranty
7-year prorated battery warranty

APC7/APC7H Thermoplastic LED Combo



Product Feature	Customer Benefit
LED source with nickel cadmium battery	Up to 10 years with no maintenance
Now with red/green field selectable faces	Design flexibility
Universal mount; single or double sided	Design flexibility
Round head version: 17 feet egress coverage Square head version: 30 feet egress coverage	Fewer fixtures required
Optional remote capacity to drive 2 LED heads (H version)	Design flexibility; labor and material savings

Certification / Warranty
UL 924 damp location listed
NFPA/NEC/OSHA/CEC code compliant
5-year product warranty
7-year prorated battery warranty

APELMINI Polycarbonate LED Emergency



Product Feature	Customer Benefit
LED source with nickel cadmium battery	Up to 10 years with no maintenance
Adjustable LED heads with 17 feet egress coverage	Fewer fixtures required
Compact design: 5-1/14" x 4-3/4"	Better design aesthetics
Junction box mount and 3 conduit entry points	Multiple installation options

Certification / Warranty
UL 924 damp location listed
NFPA/NEC/OSHA/CEC code compliant
5-year product warranty
7-year prorated battery warranty

APEL/APELH2 Polycarbonate LED Emergency



Product Feature	Customer Benefit
LED source with nickel cadmium battery	Up to 10 years with no maintenance
Adjustable LED heads with 17 feet egress coverage	Fewer fixtures required
Optional remote capacity to drive 2 LED heads (H2 version)	Design flexibility; labor and material savings

Certification / Warranty
UL 924 damp location listed
NFPA/NEC/OSHA/CEC code compliant
5-year product warranty
7-year prorated battery warranty

AP2SQLED30 Thermoplastic Square LED Head Emergency



Product Feature	Customer Benefit	Certification / Warranty
LED source with nickel cadmium battery	Up to 10 years with no maintenance	UL 924 wet location listed
Adjustable heads	Design Flexibility	NFPA/NEC/OSHA/CEC code compliant
Up to 30 feet emergency egress coverage	Fewer fixtures required	5-year product warranty
		7-year prorated battery warranty

APWR1/APWR2 Indoor/Outdoor Polycarbonate LED Remote



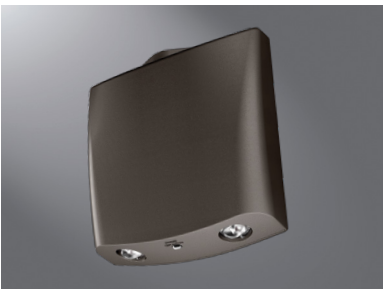
Product Feature	Customer Benefit	Certification / Warranty
LED source	Up to 10 years with no maintenance	UL 924 wet location listed
Adjustable LED heads with 17 feet egress coverage	Fewer fixtures required	NFPA/NEC/OSHA code compliant
Outdoor rated	Design flexibility; less SKU's to stock	5-year product warranty

SEL Polycarbonate LED Emergency



Product Feature	Customer Benefit	Certification / Warranty
Up to 60 feet of egress coverage	Up to \$300 savings on installation	UL924 damp location
LED source with Nickel cadmium battery	Up to ten years with no maintenance	NFPA/NEC/OSHA/CEC code compliant
Optional remote capacity (SRP/SRM remotes)	Indoor, outdoor design flexibility	5-year product warranty
Self-diagnostics w/laser test option	Labor savings on NFPA/OSHA required testing	7-year prorated battery warranty

SELW Polycarbonate Outdoor LED Emergency



Product Feature	Customer Benefit	Certification / Warranty
LED source with Nickel cadmium battery	Up to ten years with no maintenance	UL924 wet location
Forward throw optic	Maximum design flexibility	NFPA/NEC/OSHA/CEC code compliant
Up to 25 feet of egress coverage	Design flexibility; superior egress coverage	5-year product warranty
Architectural look	Pleasing aesthetics	7-year prorated battery warranty

LPX Polycarbonate / CX Die Cast Exit



Product Feature	Customer Benefit	Certification / Warranty
LED source with Nickel cadmium battery	Up to ten years with no maintenance	UL924 damp location listed
Field adjustable for red or green / universal mount	Maximum design flexibility; less SKU's to stock	NFPA/NEC/OSHA/CEC code compliant
Optional remote capacity (SRP/SRM remotes)	Indoor/outdoor design flexibility	5-year product warranty
Self-diagnostics with laser test option	Labor savings on NFPA/OSHA required testing	7-year prorated battery warranty

SELDW Industrial LED Emergency



Product Feature	Customer Benefit
LED source with Nickel cadmium battery	Up to ten years with no maintenance
Up to 60 feet of egress coverage	Fixture cost savings - less fixtures required
Self-diagnostics with laser test standard	Labor savings on NFPA/OSHA required testing
NEMA 4X; IP66; - 30° C to 50° C temp range	Maximum design flexibility; less SKU's to stock

Certification / Warranty
UL924 wet location listed
NEMA 4X/IP66/NSF
NFPA/NEC/OSHA/CEC code compliant
HAZ (class 1, Div 2) option
5-year product warranty
7-year prorated battery warranty

UX Industrial Exit



Product Feature	Customer Benefit
LED source with Nickel cadmium battery	Up to ten years with no maintenance
Field adjustable for red or green/universal mount	Maximum design flexibility; less SKU's to stock
Self-diagnostics with laser test standard	Labor savings on NFPA/OSHA required testing
NEMA 4X; IP66; - 30° C to 50° C temp range	Maximum design flexibility; less SKU's to stock

Certification / Warranty
UL924 wet location listed
NEMA 4X/IP66/NSF
NFPA/NEC/OSHA/CEC code compliant
HAZ (class 1, Div 2) option
5-year product warranty
7-year prorated battery warranty