

Metalux
Product Selection Guide



Metalux

Celebrating 50+ years, Metalux offers an extensive line of LED lighting products including recessed, linear and industrial fixtures.

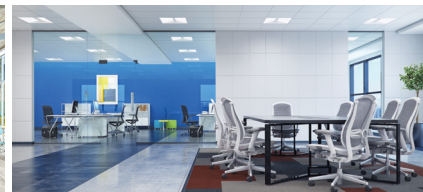
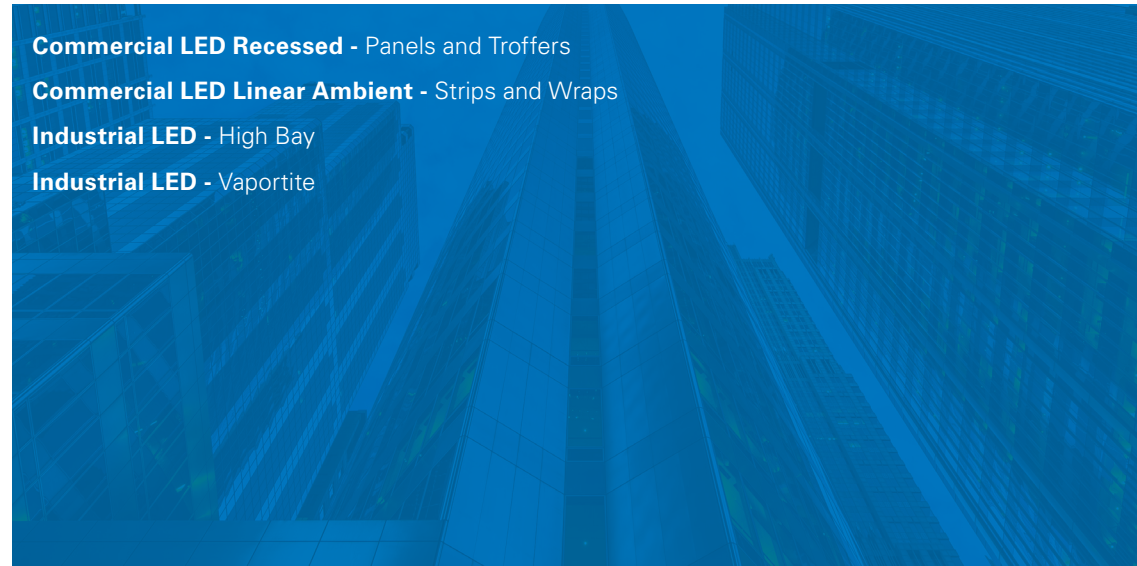
Metalux's complete family of luminaires are dedicated to the latest solid state lighting and driver technology for optimal performance and energy efficiency.

Metalux delivers innovation, quality, product availability, and responsiveness all with an affordable value proposition.



The product selection guides are simple yet powerful tools to help assist with product comparisons and selection based on features, performance and value.

- 2-3 Commercial LED Recessed** - Panels and Troffers
- 4-5 Commercial LED Linear Ambient** - Strips and Wraps
- 6 Industrial LED** - High Bay
- 7 Industrial LED** - Vaportite



Good

Click on products to learn more



| | | Backlit CGT | Backlit CGTS ² | Edgelit FP | Edgelit FPS | Backlit MMS | Backlit CGTX | Edgelit FPX | Backlit CGSB | Surround SFS |
|----------------------------|--------------------|----------------|------------------------------|---------------|----------------|-------------------------------|---------------------------|----------------|-----------------|-------------------------|
| APPLICABILITY ¹ | Education | ★★★ | ★★★ | ★★★ | ★★★ | ★★★ | ★★★ | ★★★ | ★★★ | ★★★ |
| | Office | ★★ | ★★ | ★★ | ★★★ | ★★★ | ★★★ | ★★★ | ★★ | ★★★ |
| | Healthcare | ★ | ★★ | ★ | ★ | ★★ | ★★ | ★★ | ★★★ | ★★ |
| | Retail | ★★ | ★★ | ★★★ | ★★★ | ★★★ | ★★★ | ★★★ | ★★ | ★★★ |
| FEATURES / PERFORMANCE | Sizes | 1x4, 2x2, 2x4 | 1x4, 2x2, 2x4 | 1x4, 2x2, 2x4 | 1x4, 2x2, 2x4 | 1x1, 1x2, 6"x4, 1x4, 2x2, 2x4 | 1x4, 2x2, 2x4 | 1x4, 2x2, 2x4 | 1x4, 2x2, 2x4 | 1x2, 1x4, 1x8, 2x2, 2x4 |
| | lm/W (Max) | 115 | 159 | 136 | 120 | 145 | 137 | 130 | 140 | 149 |
| | Lum (Max) | 5,300 | 6,900 | 7,000 | 6,500 | 6,200 | 10,000 | 6,400 | 9,300 | 8,500 |
| | Life (@60K) | L84 | L86 | L86 | L87 | L82 | L88 | L87 | L86 | L88 |
| | Lens | Frost, Smooth | Frost, Smooth | Frost, Smooth | Frost, Smooth | Frost, Smooth | Frost - Smooth, Prismatic | Frost, Smooth | Frost, Smooth | Frost, Smooth |
| | Service from Below | No | No | No | No | Yes in Surface Mount | No | No | Yes | No |
| | Emergency | Remote | Remote | Remote | Remote | Integrated in Recessed Mount | Integrated | Integrated | Integrated | Remote |
| | CRI | 80+ | 80+ | 80+ / 90+ | 80+ | 90+ | 80+ / 90+ | 80+ | 80+ / 90+ | 80+ |
| | Sensor Location | Tile Mount | Tile Mount | Tile Mount | Tile Mount | Tile Mount | Integrated | Integrated | Integrated | Tile Mount |
| | DLC | Standard | Standard | Standard | Standard | Standard/Premium | Premium | Premium | Standard | Standard/Premium |
| | Door | No - see CGSB | No - see CGSB | No - see CGSB | No - see CGSB | No - see CGSB | No - see CGSB | No - see CGSB | Yes | No - see CGSB |
| | Air Venting | No | No | No | No | No | No | No | No | Standard |
| | Lumen / CCT Select | No | Yes | No | Yes | Yes | No | No | No | Yes |
| VividTune™ | No | No | No | No | No | No | No | No | No | |
| INTEGRATED CONTROLS | WaveLinx LITE | | | | | | ✓ | ✓ | ✓ | ✓ |
| | WaveLinx PRO | | | | | | ✓ | ✓ | ✓ | ✓ |

Notes: 1. ★★★ = high applicability, ★★ = medium applicability, ★ = low applicability, blank = non-applicable. 2. CGTS-NUV also available (Canadian market only).

Better

Best

Click on products to learn more



| | | Center Basket CBRK | Flat Lens GR | Center Basket Achieva ARS | Center Basket Cruze CZS | Cruze ST | Cruze SB | RLN | Ovation | Accord | SkyRidge | Encounter | |
|------------------------|--------------------|-----------------------|--------------------|------------------------------|--|--|---------------------------------|-----------------|------------------|-----------------|----------------------|----------------------------|-----|
| APPLICABILITY | Education | ★★★ | ★★★ | ★★★ | ★★★ | ★★★ | ★★★ | ★★ | ★★ | ★ | ★ | ★★ | |
| | Office | ★★ | ★★ | ★★ | ★★★ | ★★★ | ★★ | ★★★ | ★★★ | ★★★ | ★★★ | ★★★ | |
| | Healthcare | ★ | ★★ | ★★ | ★★ | ★★ | ★★★ | ★★ | ★ | ★★ | ★★ | ★★★ | |
| | Retail | ★ | ★★ | ★★ | ★★★ | ★★★ | ★★ | ★★ | ★★★ | ★★ | ★★ | ★★ | |
| FEATURES / PERFORMANCE | Sizes | 1x4, 2x2, 2x4 | 1x4, 2x2, 2x4 | 1x4, 2x2, 2x4 | 1x4, 2x2, 2x4 | 1x4, 2x2, 2x4 | 1x4, 2x2, 2x4 | 1x4, 2x2, 2x4 | 1x4, 2x2, 2x4 | 1x4, 2x2, 2x4 | 1x2, 1x4, 2x2, 2x4 | 1x2, 1x4, 2x2, 2x4, Metric | |
| | lm/W (Max) | 168 | 140 | 146 | 156 | 157 | 157 | 139 | 109 | 127 | 150 | 141 | |
| | Lumens (Max) | 4,700 | 18,000 | 8,000 | 6,500 | 17,000 | 7,500 | 8,000 | 5,000 | 7,300 | 6,400 | 7,400 | |
| | Life (@60K) | L85 | L89 | L90 | L90 | L90 | L84 | L93 | L89 | L89 | L89 | L92 | L92 |
| | Lens | Frost, Ribbed | Frost, Prismatic | Round or Square Ribbed | Round or Square, Frost - Ribbed or Smooth, Perf Inlays | Round or Square, Frost - Ribbed or Smooth, Perf Inlays | Round, Frost - Ribbed or Smooth | Frosted Acrylic | Metal Perforated | Frosted Acrylic | Acrylic (WaveStream) | Acrylic (WaveStream) | |
| | Service from Below | Yes | Yes | No | No | No | Yes | Yes | No | Yes | No | No | |
| | Emergency | Integrated | Integrated | Integrated | Integrated | Integrated | Integrated | Integrated | Integrated | Integrated | Integrated | Integrated | |
| | CRI | 80+ | 80+ | 80+ / 90 | 80+ | 80+ / 90 | 80+ / 90 | 80+ / 90 | 80+ | 80+ | 80+ | 80+ | |
| | Sensor Location | Integrated | Integrated | Integrated | Integrated | Integrated | Integrated | Integrated | Tile Mount | Integrated | Integrated | Integrated | |
| | DLC | Premium | Standard / Premium | Standard / Premium | Standard / Premium | Standard / Premium | Premium | Premium | Standard | Premium | Premium | Premium | |
| | Door | No | Yes | No - see Cruze SB | No - see Cruze SB | No - see Cruze SB | Yes | No | No | Yes | No | No | |
| | Air Venting | Yes | No | No | Yes | Yes | No | No | Yes | No | Yes | Yes | |
| Lumen / CCT Select | Yes | Yes | Yes | Yes | Yes | No | No | No | No | Yes | No | | |
| VividTune™ | No | Tunable White | No | No | Tunable White | Tunable White | Tunable White | No | No | No | Tunable White | | |
| INTEGRATED CONTROLS | WaveLinx LITE | ✓ | ✓ | ✓ | ✓ | ✓ | ✓ | ✓ | ✓ | ✓ | ✓ | ✓ | |
| | WaveLinx PRO | ✓ | ✓ | ✓ | ✓ | ✓ | ✓ | ✓ | ✓ | ✓ | ✓ | ✓ | |

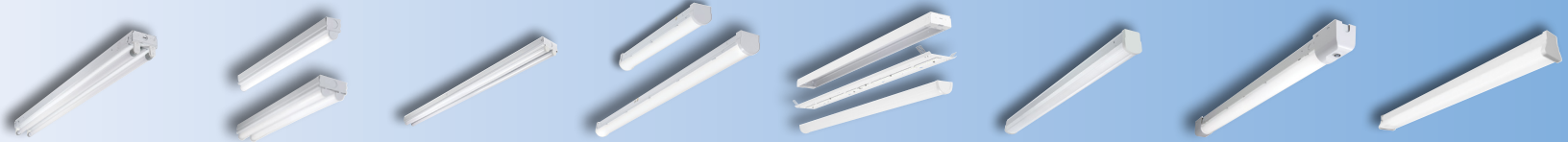
Notes: 1. ★★★ = high applicability, ★★ = medium applicability, ★ = low applicability, blank = non-applicable

Good

Better

Best

Click on products to learn more



| | | SLES ² | ST | ST2 DIM | SLSTP | SSRK Retrofit | SNX | SRL | MicroBay |
|----------------------------|----------------------------------|----------------------------|----------------------------|------------------|----------------|----------------|--------------------------------|-------------------|-------------|
| APPLICABILITY ¹ | Education | ★★ | ★ | ★★ | ★★★ | ★ | ★★★ | ★★★ | ★★★ |
| | Office | ★ | ★ | ★★ | ★★★ | ★ | ★★★ | ★★★ | ★★★ |
| | Healthcare | | | | ★ | ★ | ★★ | ★★ | ★★ |
| | Retail | ★★★ | ★ | ★★ | ★★ | ★★★ | ★★★ | ★★★ | ★★★ |
| | Industrial | ★★ | ★★ | ★★ | ★★ | ★★★ | ★★★ | ★★★ | ★★★ |
| | Residential | | ★★★ | | ★★ | | | | |
| FEATURES / PERFORMANCE | Length | 4', 8' | 2', 4', 8' | 2', 4', 8' | 2', 4', 8' | 4', 8' | 2', 4', 8' | 4', 8' | 2', 4', 8' |
| | lm/W (Max) | 167 (8ft) | 108 | 122 | 148 | 159 | 176 | 149 | 175 |
| | Lum (Max) | 8,700 | 9,200 | 9,200 | 11,900 | 8,000 / 4 ft. | 22,000 | 11,000 | 20,000 |
| | Life (@60K) | L70/50K ³ | L70/50K | L70/50K | L70/50K | L94 | L87 | L82 | L87 |
| | Dimming | N/A | No | 0-10V | Triac or 0-10V | 0-10V | 0-10V, Step, Dali | 0-10V, Step, Dali | 0-10V, Dali |
| | Lens | None ⁴ | White, Single or Dual Lens | White, Dual Lens | Diffuse, Poly | Frost, Acrylic | Open, Round, FDL, Square, Refl | Frost, Acrylic | Multiple |
| | Emergency | Integrated | None | Integrated | Integrated | Integrated | Integrated | Integrated | Integrated |
| | CRI | 80+ | 80+ | 80+ | 80+ | 80+ | >80 / 90 | 80+ | 80+ / 90+ |
| | Sensor Location | Remote | Remote | Remote | Sensor Kit | N/A | Integrated | Integrated | Integrated |
| | DLC | Standard (TLED Lamps only) | Standard | Standard | Standard | Premium | Premium | Premium | Premium |
| | Lumen / CCT Select | No | No | CCT | CCT/Lumen | No | Yes, specific lumen only | No | Optional |
| INTEGRATED CONTROLS | Basic Occupancy | | | | ✓ | ✓ | ✓ | ✓ | ✓ |
| | Stand Alone Daylight / Occupancy | | | | | ✓ | ✓ | ✓ | ✓ |
| | WaveLinX LITE | | | | | | ✓ | ✓ | ✓ |
| | WaveLinX | | | | | | ✓ | ✓ | ✓ |

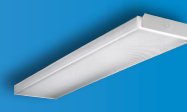
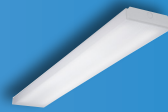
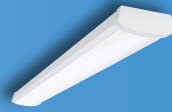
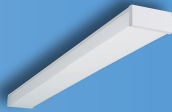
Notes: 1. ★★★ = high applicability, ★★ = medium applicability, ★ = low applicability, blank = non-applicable. 2. w/T8 LED lamps included. 3. TLED lamp tested to B50 L70 requirement. LED lifetime means the length of time (in hours) until half of the LED light sources maintain at least 70% of their initial lumen output (B50, L70). 4. TLED CorePro lamp is glass tube. TLED MasterClass lamp is shatter resistant plastic.

Good

Better

Best

Click on products
to learn more



| | | WP | NWS | WNLED | WSNLED | BCLED | AWS / AWWS | SWLED |
|----------------------------|----------------------------------|----------------------|-----------------------|----------------|-----------------------|---------------|--|--------------------------------------|
| APPLICABILITY ¹ | Education | ★★ | ★★★ | ★★★ | ★★ | ★★ | ★★★ | ★★★ |
| | Office | ★ | ★★ | ★★ | ★★★ | ★ | ★★★ | ★★★ |
| | Healthcare | ★ | ★ | ★ | ★★ | ★★ | ★★ | ★ |
| | Retail | ★ | ★★ | ★ | ★★★ | ★ | ★★★ | ★ |
| | Industrial | ★ | ★★ | ★★ | | | ★ | ★★ |
| | Residential | ★★★ | | ★ | ★ | ★ | ★★ | |
| FEATURES / PERFORMANCE | Sizes | 2' and 4', 5.1" wide | 2', 4' / 5.3" wide | 2', 4' | 2', 4' | 2', 4' | 2', 4', 8' / 5.5" & 10" Wide | 4' |
| | lm/W (Max) | 114 | 129 | 118 | 108 | 120 | 165 | 150 |
| | Lum (Max) | 3,400 | 4,900 | 5,000 | 6,500 | 4,800 | 13,000 | 8,000 |
| | Life (@60K) | L70/50K | L82 | L88 | L87 | L82 | L90 | L91 |
| | Lens | Prismatic Acrylic | Diffuse, Acrylic | Frost, Acrylic | Frost + Film, Acrylic | Frost, Smooth | (Vandal Resistant) Ribbed Frost, Polycarb | (Vandal Resistant) Frost, Acrylic |
| | Emergency | No | Remote | Integrated | Integrated | Integrated | Integrated | Integrated |
| | CRI | 80+ | 80+ | 80+ | 80+ | 80+ | 80+, 90+ | 80+ |
| | Row Mount | N/A | Yes | Yes | Yes | Yes | Yes | No |
| | Sensor Location | N/A | Integral, Microwave | N/A | N/A | N/A | Integrated | Integrated |
| | DLC | Standard | DLC, Title 24 Non-Res | Standard | Standard | None | DLC, Title 24 Res | Standard |
| | Lumen / CCT Select | No | CCT/Lumen | No | No | No | CCT/Lumen | No |
| INTEGRATED CONTROLS | Basic Occupancy | | ✓ | | | | ✓ | ✓ |
| | Stand Alone Daylight / Occupancy | | | | | | ✓ | ✓ |
| | WaveLinx LITE | | | | | | ✓ | ✓ |
| | WaveLinx | | | | | | ✓ | ✓ |

Notes: 1. ★★★ = high applicability, ★★ = medium applicability, ★ = low applicability, blank = non-applicable

Good

Better

Best

Click on products to learn more



| | | EZBY | SPHB | VHB | UHBS2 | CZL | Steeler | OHB(L) | Benchmark |
|----------------------------|----------------------------------|-----------------|-------------------|----------------|--------------------|----------------|----------------|-----------------|-----------------|
| APPLICABILITY ¹ | Big Box Retail | ★ | ★★★ | ★ | ★★★ | ★★★ | ★★ | ★★★ | ★ |
| | Sports / Recreation | ★ | ★★ | ★★ | ★★ | ★ | ★★★ | ★★★ | ★★ |
| | Warehouses | ★★★ | ★★★ | ★★★ | ★★★ | ★★ | ★★★ | ★★★ | |
| | Manufacturing | ★★ | ★★ | ★★ | ★★★ | ★ | ★★★ | ★★★ | ★★★ |
| | Cold Storage | ★ | ★★ | ★★★ | ★★★ | ★ | ★ | ★★★ | ★★ |
| | Large Indoor | ★ | ★★ | ★ | ★★ | | ★★ | ★★★ | ★★ |
| | Complex Environments | ★ | | | ★★ | | ★ | | ★★★ |
| FEATURES / PERFORMANCE | Lumen Range | 18,000 - 30,000 | 9,000 - 60,000 | 9,000 - 48,000 | 12,000 - 36,000 | 5,000 - 32,000 | 9,000 - 30,000 | 9,000 - 100,000 | 12,000 - 70,000 |
| | Selectable | Lumens/CCT | Lumens/CCT | Lumens | Lumens/5CCT | | | | |
| | Efficacy (Max) | 150 lm/W | 172 lm/W | 164 lm/W | 180 lm/W | 176 lm/W | 152 lm/W | 205 lm/W | 181 lm/W |
| | CRI | 80 | 70, 80, 90 | 70, 80, 90 | 80 | 80, 90 | 80, 90 | 70, 80, 90 | 70, 80 |
| | Distribution | M | N, M, W | N, W | Selectable N, M, W | Multiple | N, M, W | N, M, W | N, M, W |
| | Sizes | 13.4" | 18", 26", 42" | < 2' | 12"/14.1"/16" Dia | 4', 8' | 17" Dia | Scalable | 17", 25" Dia |
| | Housing ² | Diecast | CRS | CRS / Extruded | Diecast | CRS | CRS / Diecast | CRS | Diecast |
| | Lensing | Acrylic | Polycarbonate | Polycarbonate | Polycarbonate | Multiple | Polycarbonate | Acrylic | Acrylic |
| | Uplight | None | Optional | None | None | Optional | Up to 10% | None | None |
| | Life (@ 60K hrs) | L91 | L88 | L83 | L91 | L89 | L88 | L96 | L92 |
| | Ambient Range | -20C to 50C | -40C to 55C | -40C to 55C | -40C to 50C | -40C to 65C | -40C to 55C | -40C to 55C | -40C to 65C |
| | Emergency | Remote | Integrated | Remote | Remote | Integrated | Remote | Integrated | Remote |
| | Ratings | IP65 | Damp | Damp | IP65, NEMA 4X, NSF | Damp | IP65 Optics | Damp | IP66 |
| DLC | Premium | Premium | Standard, Premium | Premium | Premium | Premium | Premium | Premium | |
| INTEGRATED CONTROLS | Basic Occupancy | | | ✓ | | ✓ | ✓ | ✓ | ✓ |
| | Stand Alone Daylight / Occupancy | Sensor Port | Sensor Port | ✓ | Sensor Port | ✓ | ✓ | ✓ | ✓ |
| | WaveLinx | | ✓ | ✓ | | ✓ | ✓ | ✓ | ✓ |
| | Enlighted ³ | | ✓ | ✓ | | ✓ | ✓ | ✓ | ✓ |

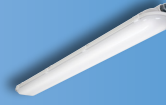
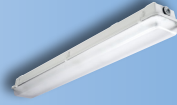
Notes: 1. ★★★ = high applicability, ★★ = medium applicability, ★ = low applicability, blank = non-applicable
 2. CRS=Cold-rolled Steel, Extruded=Extruded Aluminum, Diecast=Diecast Aluminum.
 3. Location data for asset tracking.

Good

Better

Best

Click on products to learn more



| | | APVT-S | VT2 | VT3 | VT4S | VT4 |
|----------------------------|----------------------------------|----------------|------------------------|------------------------|------------------------|------------------------|
| APPLICABILITY ¹ | Canopy | ★★ | ★★ | ★★ | | |
| | Storage | ★★★ | ★★★ | ★★ | | |
| | Parking Garage | ★★ | ★★ | ★★★ | | |
| | Warehouse | ★★ | ★★★ | ★★★ | ★ | ★ |
| | Food Processing | ★★ | ★★ | ★★★ | ★★ | ★★ |
| | Manufacturing | | ★★ | ★★ | ★★★ | ★★★ |
| | Complex Environments | | ★ | | ★★★ | ★★★ |
| FEATURES / PERFORMANCE | Lumen Range | 3,000 - 11,600 | 2,000 - 22,000 | 2,000 - 8,000 | 9,000 - 18,000 | 9,000 - 30,000 |
| | Selectable | Lumens / CCT | N/A | Lumens / CCT | N/A | N/A |
| | Efficacy (Max) | 151 lm/W | 150 lm/W | 154 lm/W | 165 lm/W | 146 lm/W |
| | Distribution ² | G | G, W | G, W, P | G | G |
| | Sizes | 4', 8' | 2', 4', 8' | 2', 4' | 2' | 4' |
| | Housing | Polycarbonate | Fiberglass/Polyester | Fiberglass/Polyester | Fiberglass | Fiberglass |
| | Lensing | Polycarbonate | DR Acrylic or Polycarb | DR Acrylic or Polycarb | DR Acrylic or Polycarb | DR Acrylic or Polycarb |
| | Wet Location | Yes | Yes | Yes | Yes | Yes |
| | IP Rating | IP65 | None | IP65, 66, 67 | IP65, 66, 67, 69 | IP65, 67 |
| | NSF | None | Yes | Yes | Yes | Yes |
| | NEMA 4X | None | None | None | Yes | Yes |
| | Life (@60K hrs) | L89 | L91 | L91 | L91 | L92 |
| | Ambient Range | -20C to 40C | -40C to 35C | -40C to 50C | -40C to 40C | -40C to 40C |
| | Emergency | Yes | Yes | Yes | Yes | Yes |
| Vandal Resistant | None | Optional | Optional | Optional | Optional | |
| DLC | Standard | Premium | Premium | Premium | Premium | |
| INTEGRATED CONTROLS | Basic Occupancy | ✓ | ✓ | ✓ | ✓ | ✓ |
| | Stand Alone Daylight / Occupancy | ✓ | ✓ | ✓ | ✓ | ✓ |
| | WaveLinx | ✓ | | ✓ | | ✓ |
| | LumaWatt Pro ³ | | | | | |

Notes: 1. ★★★ = high applicability, ★★ = medium applicability, ★ = low applicability, blank = non-applicable
 2. G=General, W=Wide, P=Parking Garage.
 3. Location data for asset tracking.

Lighting Brands

Ametrix
AtLite
Corelite
Ephesus
Fail-Safe
HALO
HALO Commercial
Invue
iO
Iris
Lumark
LumarkAP
Lumière
McGraw-Edison
Metalux
MWS
NeoRay
Portfolio
PrentaLux - 3D Printed Lighting
RSA
Shaper
Streetworks
Sure-Lites

Controls Brands

Greengate
Fifth Light
Intelligent Lighting Controls

Connected Lighting Systems and Smart Spaces Platform

WaveLinx
Trellix Infrastructure



Cooper Lighting Solutions
1121 Highway 74 South
Peachtree City, GA 30269
P: 770-486-4800
www.cooperlighting.com

Canada Sales
5925 McLaughlin Road
Mississauga, Ontario L5R 1B8
P: 905-501-3000
F: 905-501-3172

© 2025 Cooper Lighting Solutions
All Rights Reserved
Printed in USA
Publication No. BR519040EN-web
April 2, 2025 1:16 PM

Cooper Lighting Solutions is a registered trademark.

All other trademarks are property of their respective owners.

Product availability, specifications, and compliances are subject to change without notice.