

**ClearCurve Collection**  
LED Architectural Wall and Pole Mount Luminaires

**Invue**





## Simple in Form. Rich in Features.

Public space is defined by its  
pedestrian experience.

Invue's product collections pair compelling, elegant  
dayforms with leading-edge optics to enhance modern  
outdoor spaces.

Distinctive yet compatible with varied architectural styles,  
the ClearCurve Collection provides a clean, uncluttered  
dayform and visual comfort for near-building pedestrian  
spaces, campuses, and parks.

## Linking structures with spaces.

Clean, simple style connects  
buildings with surroundings

ClearCurve Wall accents and illuminates the buildings it is paired with. Used as a typical wall mount fixture, it illuminates landscapes and sidewalks near building exteriors. It can be used for indoor pool deck areas with the Natatorium finish option. An Uplight configuration is also available for wall graze and wall wash applications. Back box accessories with conduit entry ports facilitate installations where electrical service is delivered via surface conduit, such as retrofits or last-minute additions to projects.



# Daytime refinement, nighttime performance.

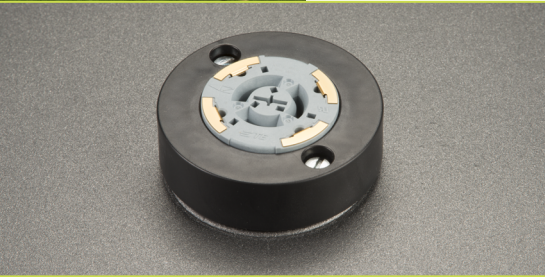
The ClearCurve Pedestrian luminaire expands the ClearCurve form to low and medium height pole-mount applications like campuses, parks and recreation areas. All of the ClearCurve features and aesthetics are matched with a quick mount arm for fast, easy installation, and the product is 3G vibration rated for bridge and overpass applications. The quick mount arm is also available as an accessory to allow contractors to convert wall mount versions to pole mount on the job site.



WaveLinx



Occupancy sensor



7-PIN

# Synchronizing light and movement

The ClearCurve family of luminaires are fully controllable to maximize energy and savings.

Many pedestrian spaces are vacant during off-peak times while remaining fully illuminated, wasting energy and shortening the life of the system. Cooper lighting solutions offers a wide range of control options to meet any code, energy, or environmentally related goal. Maximized operating efficiency, reduced maintenance and overall savings can easily be achieved.

**Enabled solutions:** integral 0-10V dimming drivers that can be controlled by external systems or through 7-pin ANSI receptacles.

**Integrated controls:** factory installed standalone occupancy sensors, DALI drivers, twistlock or button type photocontrols.

**WaveLinx & Wavelinx Lite** (Wireless Outdoor Lighting Control Module): The portfolio of Outdoor WaveLinx Control Modules (nodes) enables control of exterior luminaires in applications such as pathways, areas, and open air parking lots adjacent to buildings and parking decks. This delivers dimming or on/off control to outdoor lighting based on photo or motion sensors, astronomic, or time schedules. This can be managed locally or remotely.

**Trellix Infrastructure:** A full range of control options is available with integral 7-pin ANSI receptacles.

### Lighting Product Lines

Ametrix  
AtLite  
Corelite  
Ephesus  
Fail-Safe  
Halo  
Halo Commercial  
Invue  
io  
Iris  
Lumark  
Lumière  
McGraw-Edison  
Metalux  
MWS  
Neo-Ray  
Portfolio  
RSA  
Shaper  
Streetworks  
Sure-Lites

### Controls Product Lines

Fifth Light Technology  
Greengate  
iLight (International Only)  
iLumin  
Zero 88

### Connected Lighting Systems

Distributed Low-Voltage Power  
HALO Home  
iLumin Plus  
LumaWatt Pro  
WaveLinx



**ClearCurve Collection**  
LED Architectural Wall  
and Pole Mount Luminaires